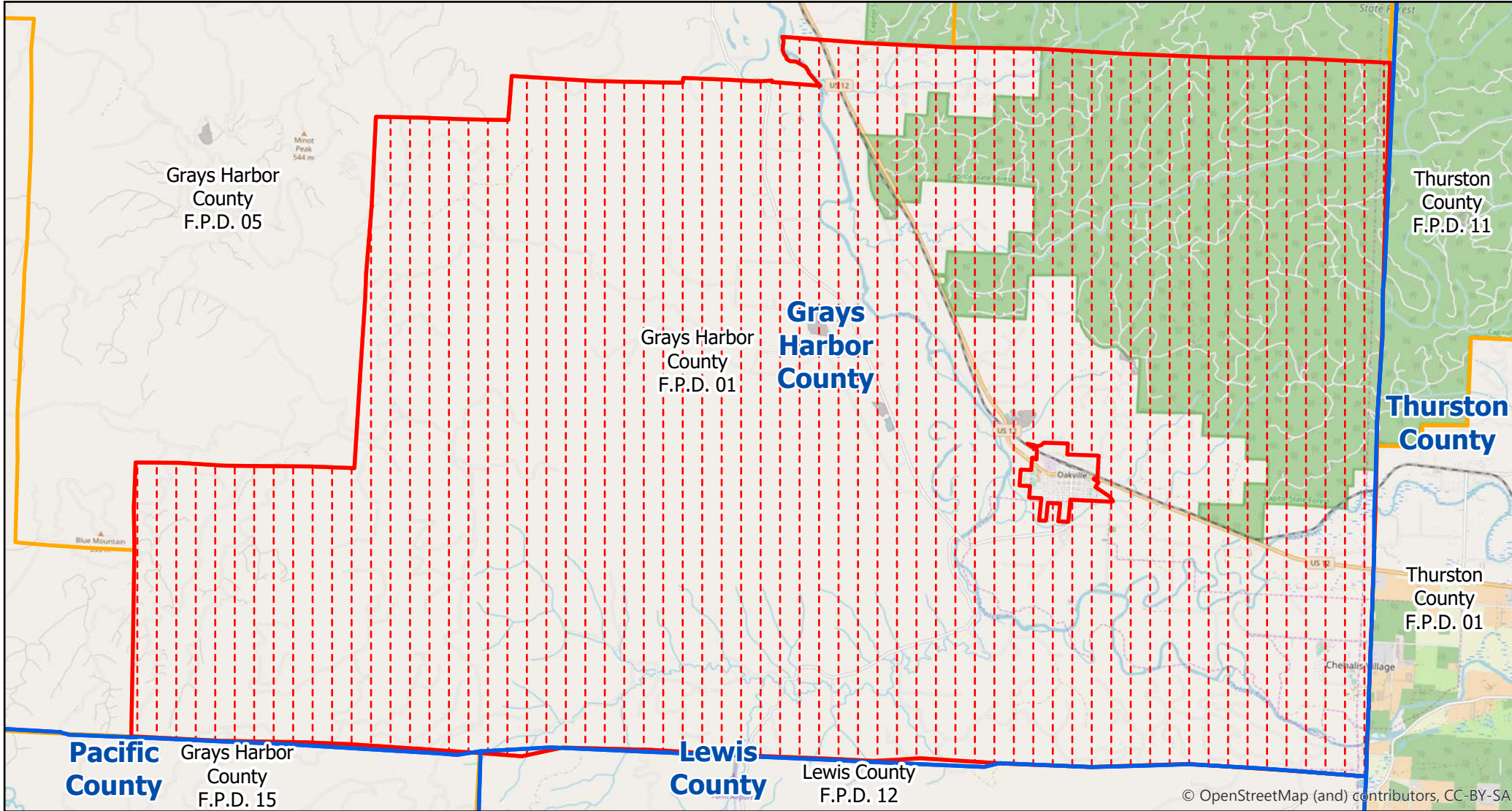
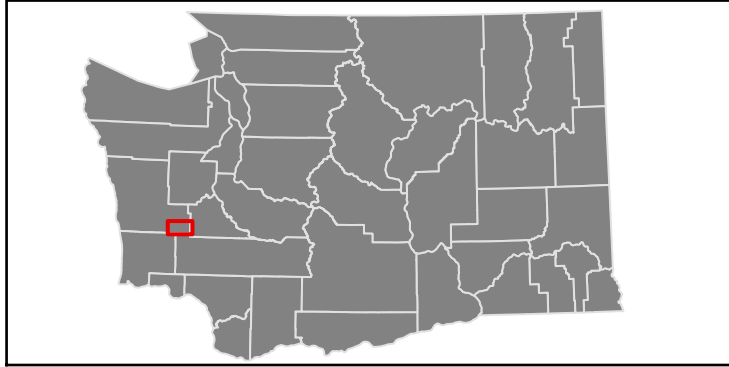
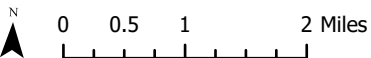


# Grays Harbor County F.P.D. 01



## (Unincorporated Portion Only)

-  County
-  Selected Fire Protection District
-  Fire Protection Districts

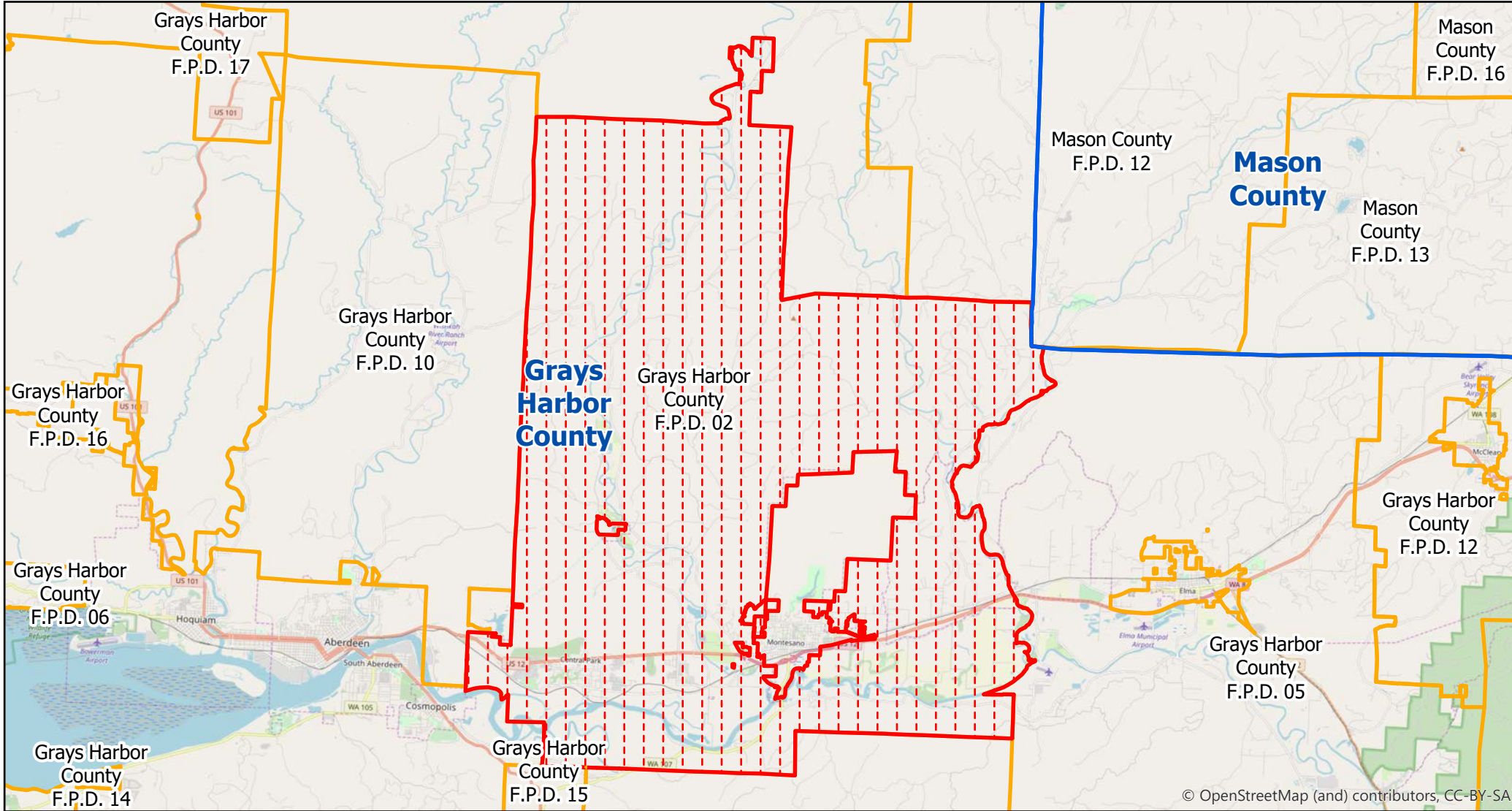


## Washington State Office of Financial Management Forecasting & Research Division




Disclaimer: By using these data, the user agrees that neither the Office of Financial Management nor the Washington Surveying and Rating Bureau shall be liable for any activity involving these data with regard to lost profits or savings or any other consequential damages; or the fitness for use of the data for a particular purpose; or the installation of the data, its use, or the results obtained.

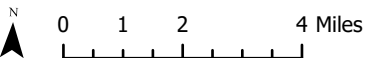
Data source: Fire Protection Districts and City Limits [Shapefile], Washington Surveying and Rating Bureau, October 1, 2018.  
Map prepared by Rob Kemp on October 10, 2018.

# Grays Harbor County F.P.D. 02



## (Unincorporated Portion Only)

-  County
-  Selected Fire Protection District
-  Fire Protection Districts



## Washington State Office of Financial Management Forecasting & Research Division

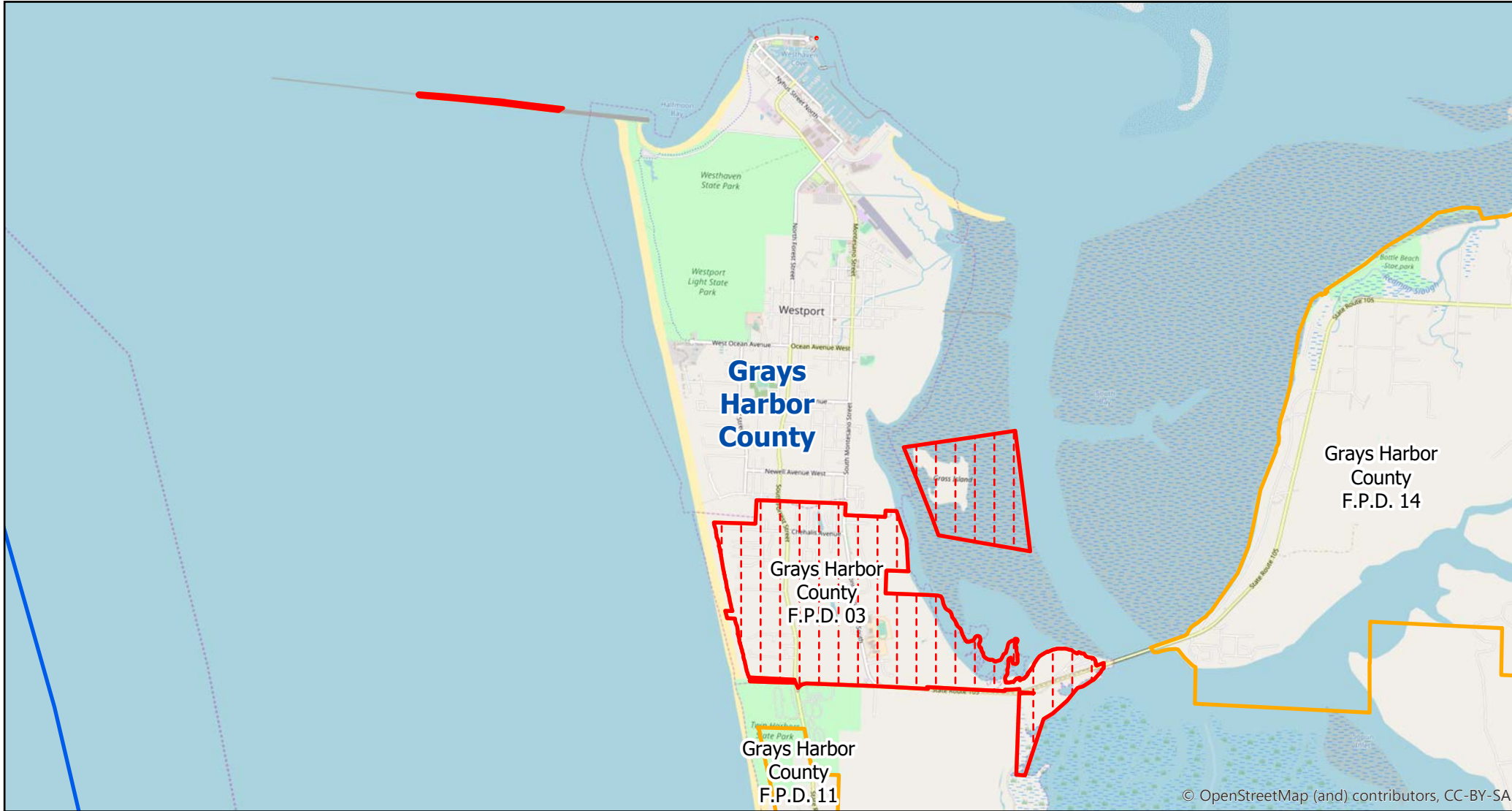
Disclaimer: By using these data, the user agrees that neither the Office of Financial Management nor the Washington Surveying and Rating Bureau shall be liable for any activity involving these data with regard to lost profits or savings or any other consequential damages; or the fitness for use of the data for a particular purpose; or the installation of the data, its use, or the results obtained.

Data source: Fire Protection Districts and City Limits [Shapefile], Washington Surveying and Rating Bureau, October 1, 2018.

Map prepared by Rob Kemp on October 10, 2018.

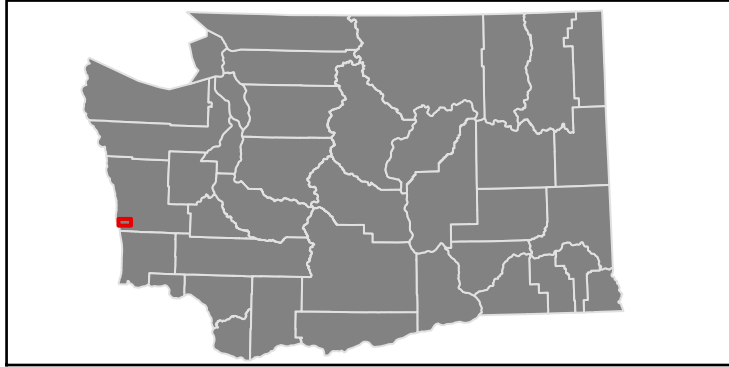
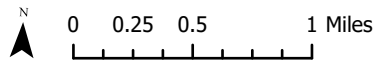


# Grays Harbor County F.P.D. 03



## (Unincorporated Portion Only)

- County
- Selected Fire Protection District
- Fire Protection Districts



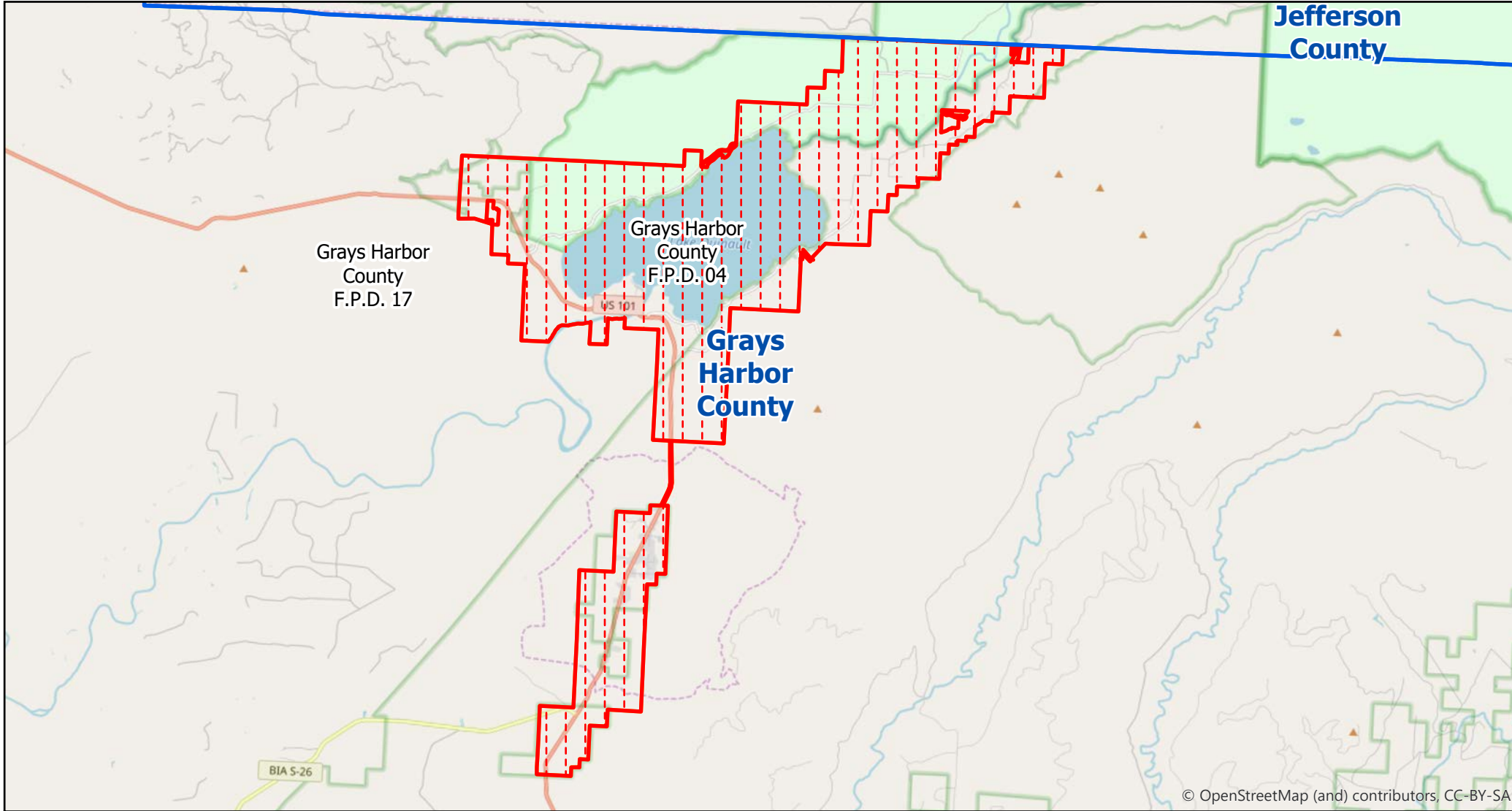
## Washington State Office of Financial Management Forecasting & Research Division

Disclaimer: By using these data, the user agrees that neither the Office of Financial Management nor the Washington Surveying and Rating Bureau shall be liable for any activity involving these data with regard to lost profits or savings or any other consequential damages; or the fitness for use of the data for a particular purpose; or the installation of the data, its use, or the results obtained.




Data source: Fire Protection Districts and City Limits [Shapefile], Washington Surveying and Rating Bureau, October 1, 2018.

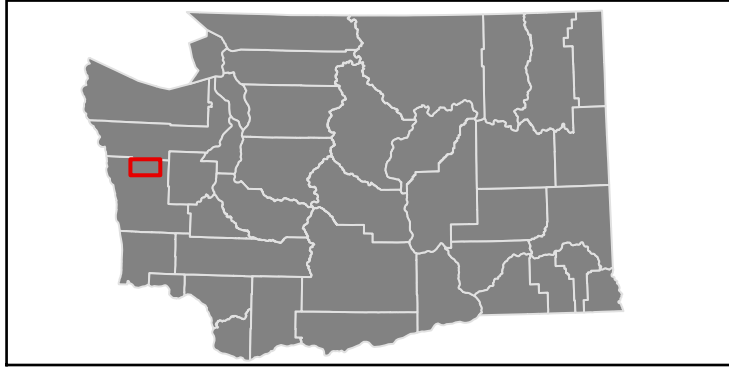
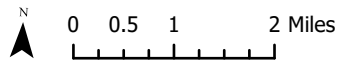
Map prepared by Rob Kemp on October 10, 2018.

# Grays Harbor County F.P.D. 04



## (Unincorporated Portion Only)

-  County
-  Selected Fire Protection District
-  Fire Protection Districts



## Washington State Office of Financial Management Forecasting & Research Division

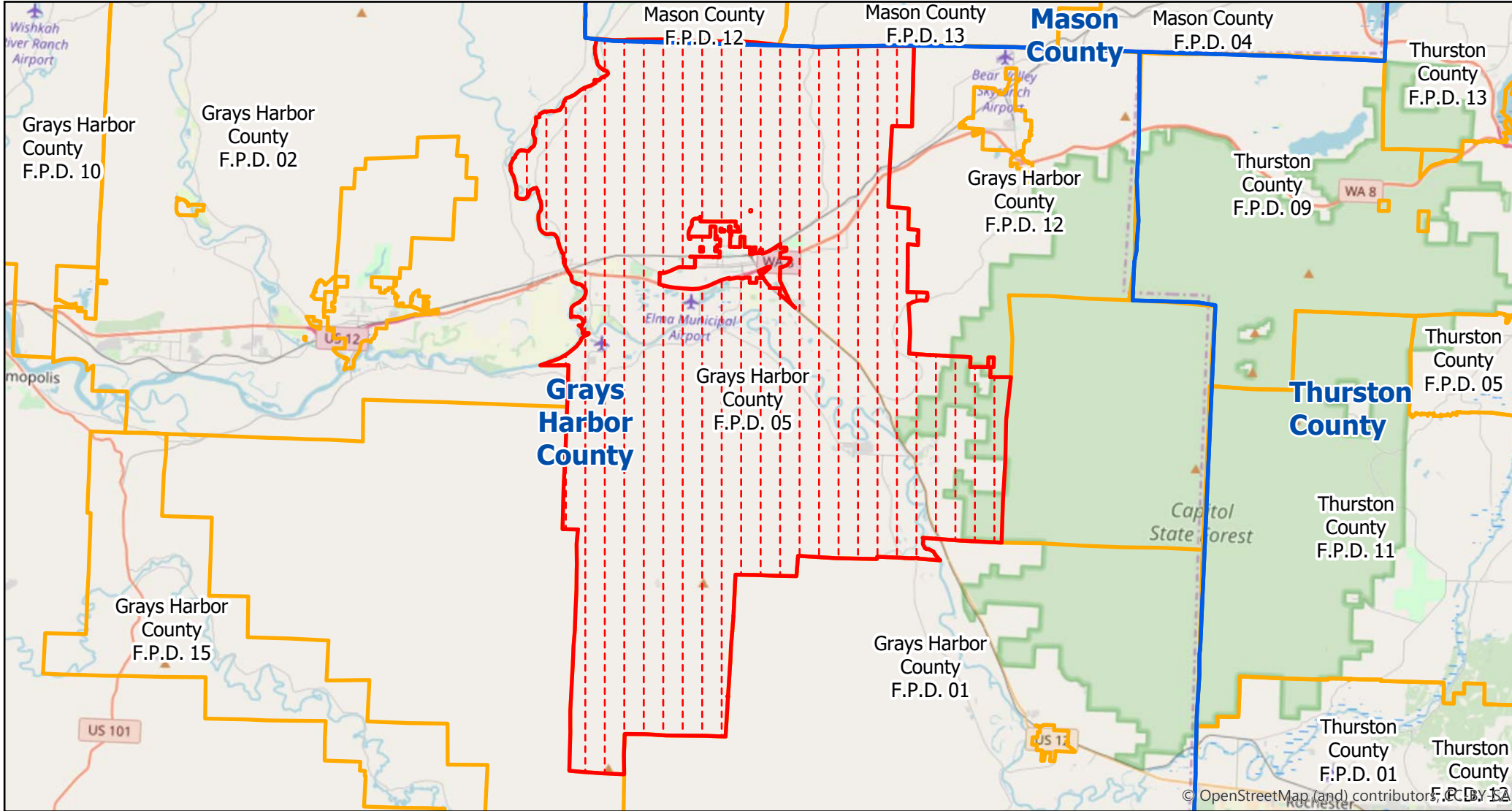
Disclaimer: By using these data, the user agrees that neither the Office of Financial Management nor the Washington Surveying and Rating Bureau shall be liable for any activity involving these data with regard to lost profits or savings or any other consequential damages; or the fitness for use of the data for a particular purpose; or the installation of the data, its use, or the results obtained.

Data source: Fire Protection Districts and City Limits [Shapefile], Washington Surveying and Rating Bureau, October 1, 2018.

Map prepared by Rob Kemp on October 10, 2018.

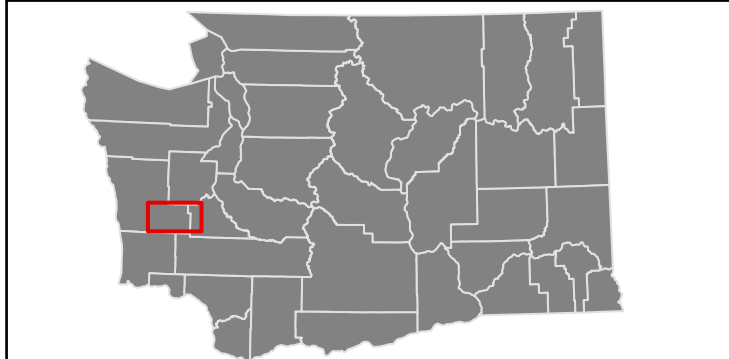
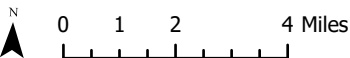


# Grays Harbor County F.P.D. 05



## (Unincorporated Portion Only)

- County
- Selected Fire Protection District
- Fire Protection Districts



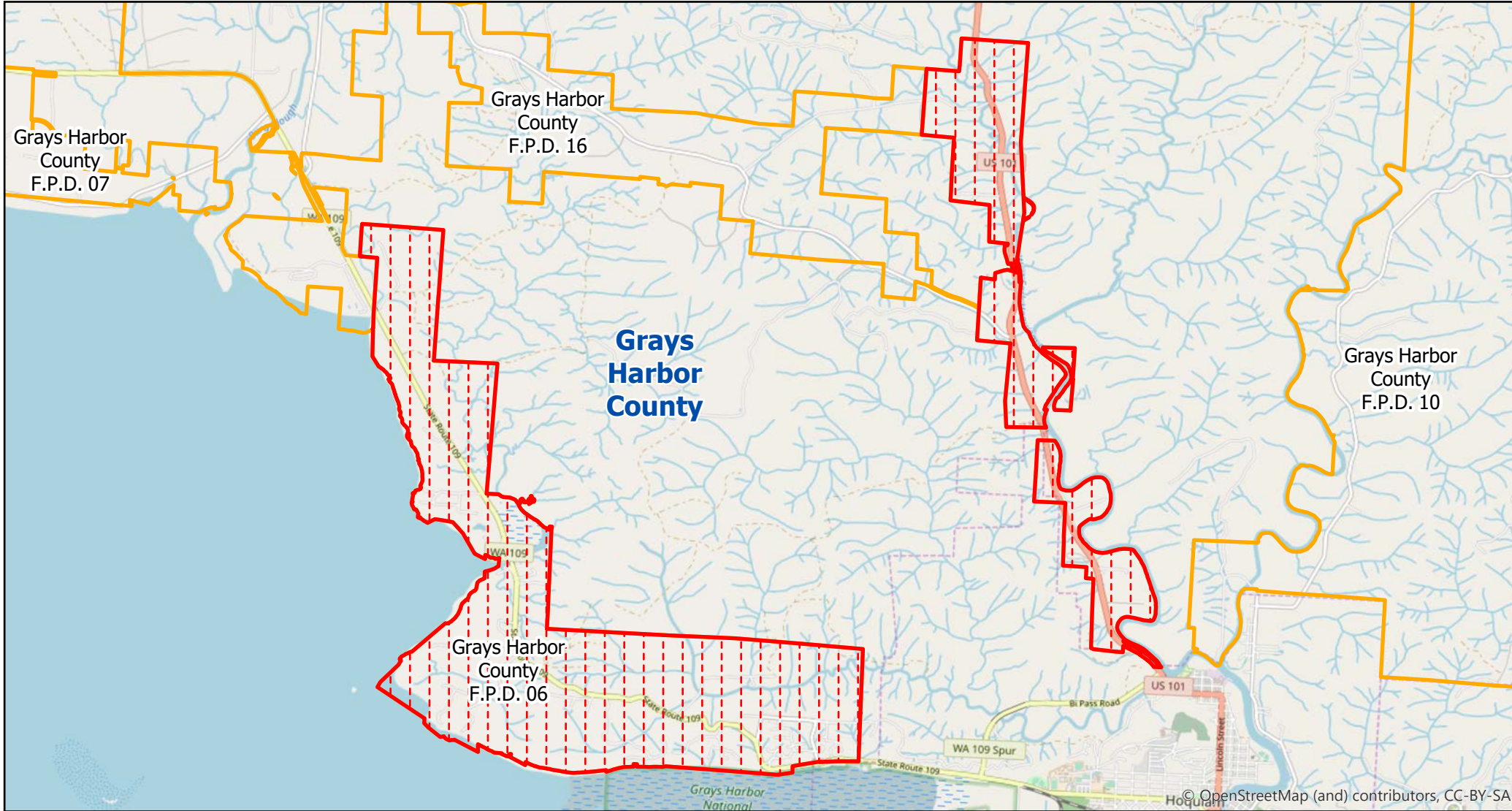
## Washington State Office of Financial Management Forecasting & Research Division

Disclaimer: By using these data, the user agrees that neither the Office of Financial Management nor the Washington Surveying and Rating Bureau shall be liable for any activity involving these data with regard to lost profits or savings or any other consequential damages; or the fitness for use of the data for a particular purpose; or the installation of the data, its use, or the results obtained.




Data source: Fire Protection Districts and City Limits [Shapefile], Washington Surveying and Rating Bureau, October 1, 2018.

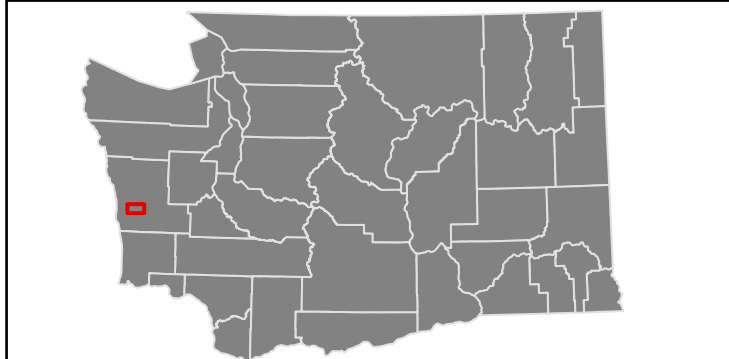
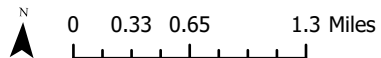
Map prepared by Rob Kemp on October 10, 2018.

# Grays Harbor County F.P.D. 06



## (Unincorporated Portion Only)

-  County
-  Selected Fire Protection District
-  Fire Protection Districts



## Washington State Office of Financial Management Forecasting & Research Division

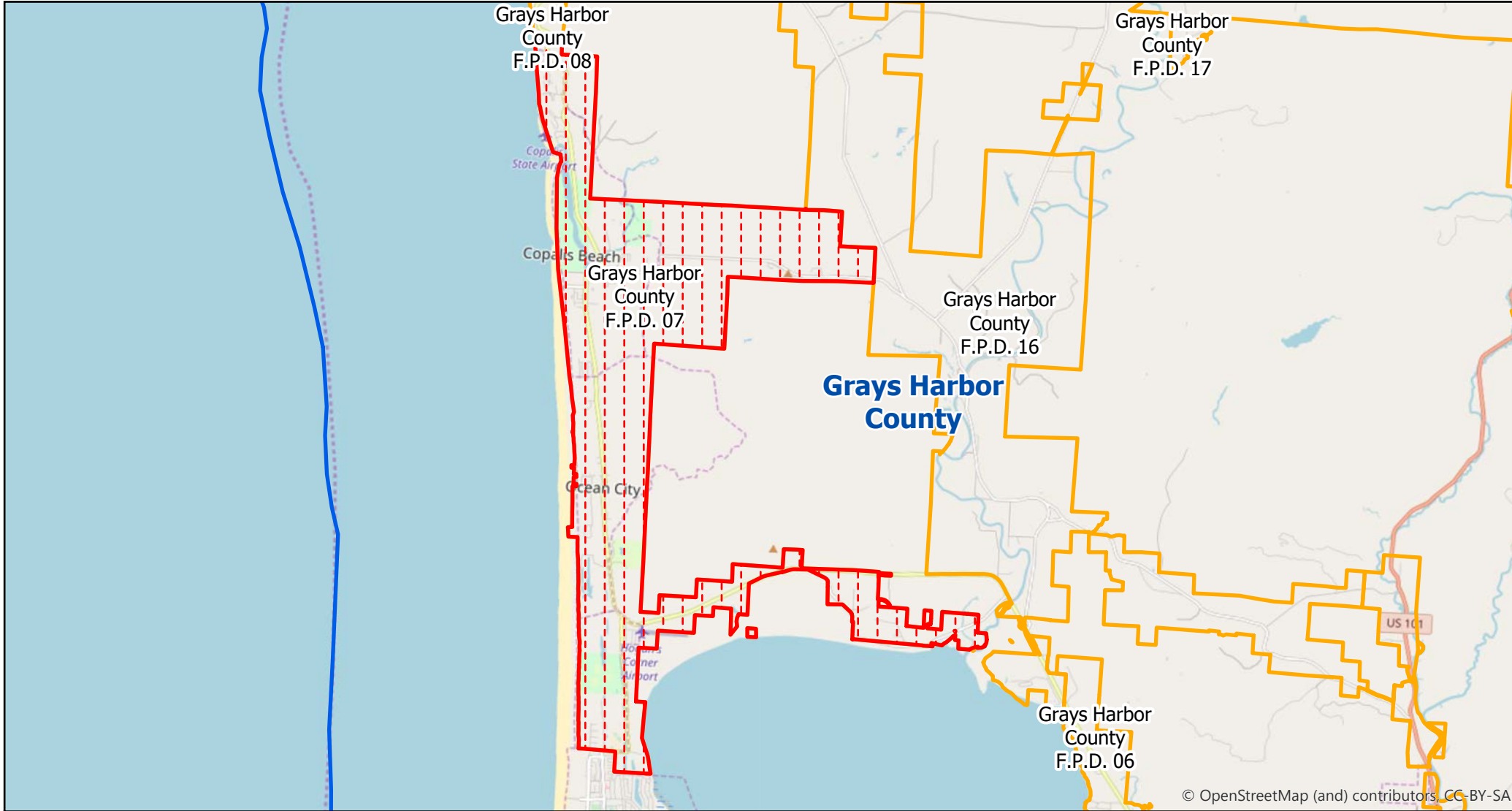
Disclaimer: By using these data, the user agrees that neither the Office of Financial Management nor the Washington Surveying and Rating Bureau shall be liable for any activity involving these data with regard to lost profits or savings or any other consequential damages; or the fitness for use of the data for a particular purpose; or the installation of the data, its use, or the results obtained.

Data source: Fire Protection Districts and City Limits [Shapefile], Washington Surveying and Rating Bureau, October 1, 2018.

Map prepared by Rob Kemp on October 10, 2018.

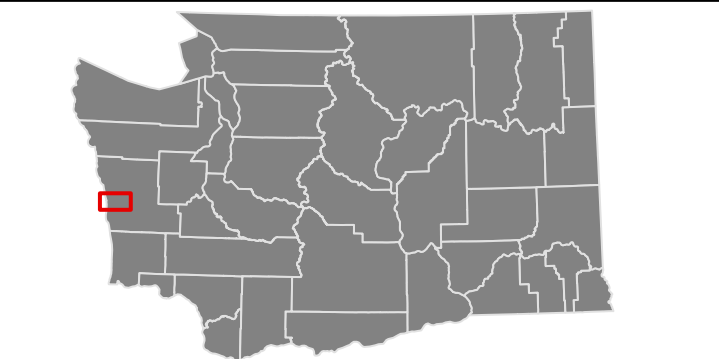
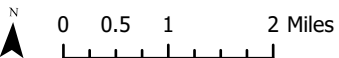


# Grays Harbor County F.P.D. 07



## (Unincorporated Portion Only)

-  County
-  Selected Fire Protection District
-  Fire Protection Districts



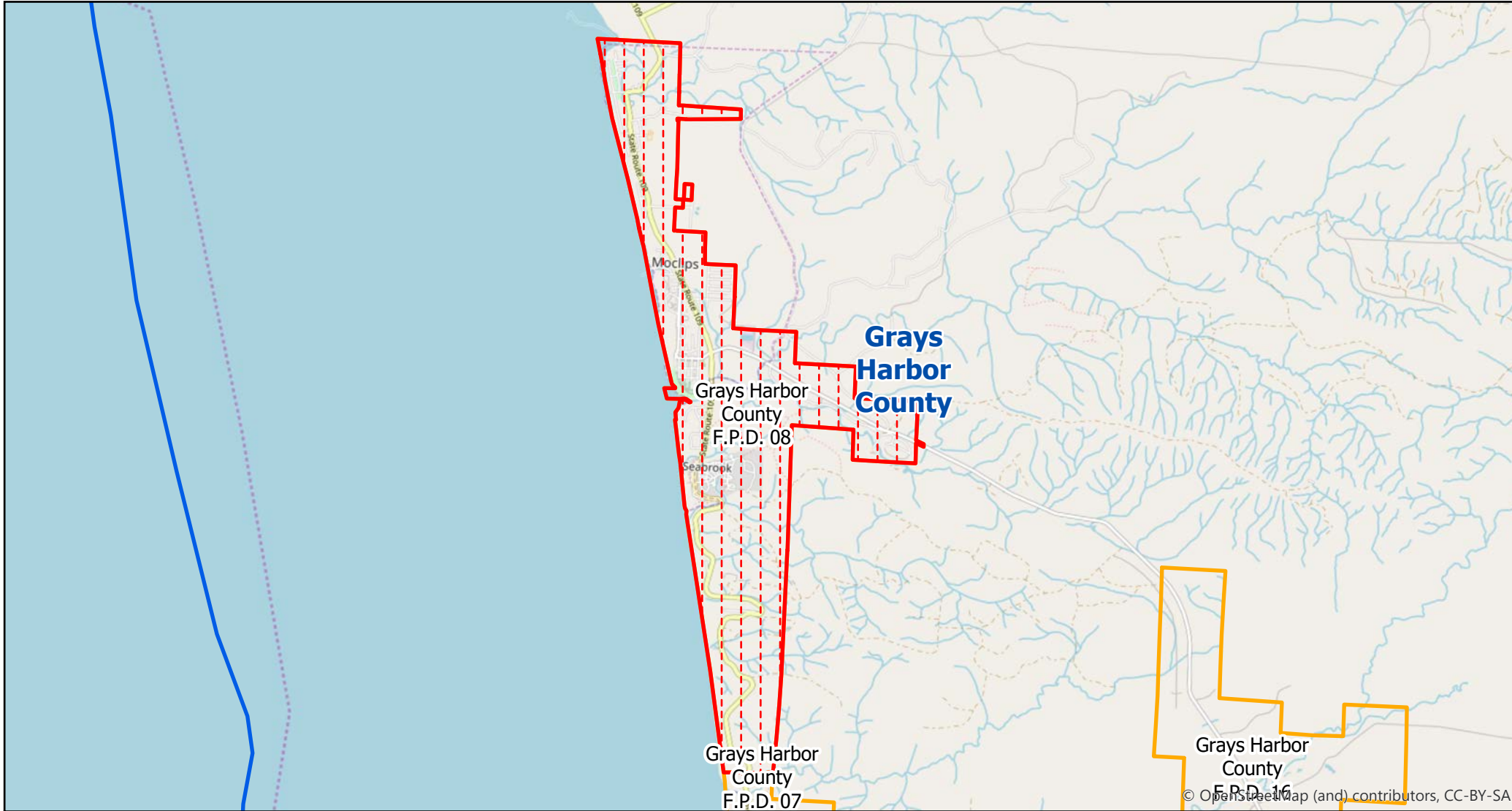
## Washington State Office of Financial Management Forecasting & Research Division

Disclaimer: By using these data, the user agrees that neither the Office of Financial Management nor the Washington Surveying and Rating Bureau shall be liable for any activity involving these data with regard to lost profits or savings or any other consequential damages; or the fitness for use of the data for a particular purpose; or the installation of the data, its use, or the results obtained.




Data source: Fire Protection Districts and City Limits [Shapefile], Washington Surveying and Rating Bureau, October 1, 2018.

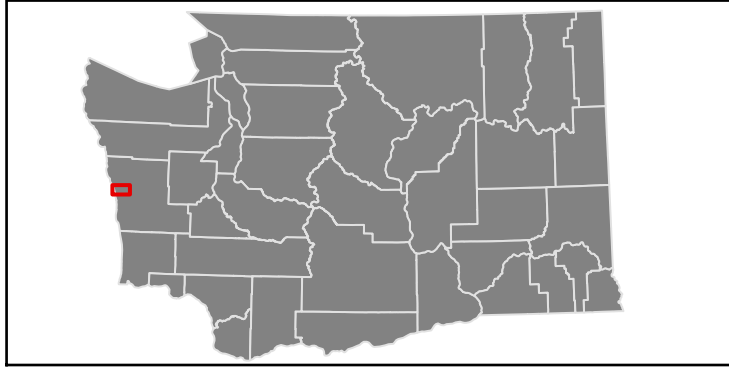
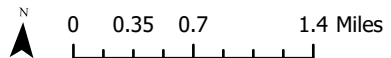
Map prepared by Rob Kemp on October 10, 2018.

# Grays Harbor County F.P.D. 08



## (Unincorporated Portion Only)

-  County
-  Selected Fire Protection District
-  Fire Protection Districts



## Washington State Office of Financial Management Forecasting & Research Division

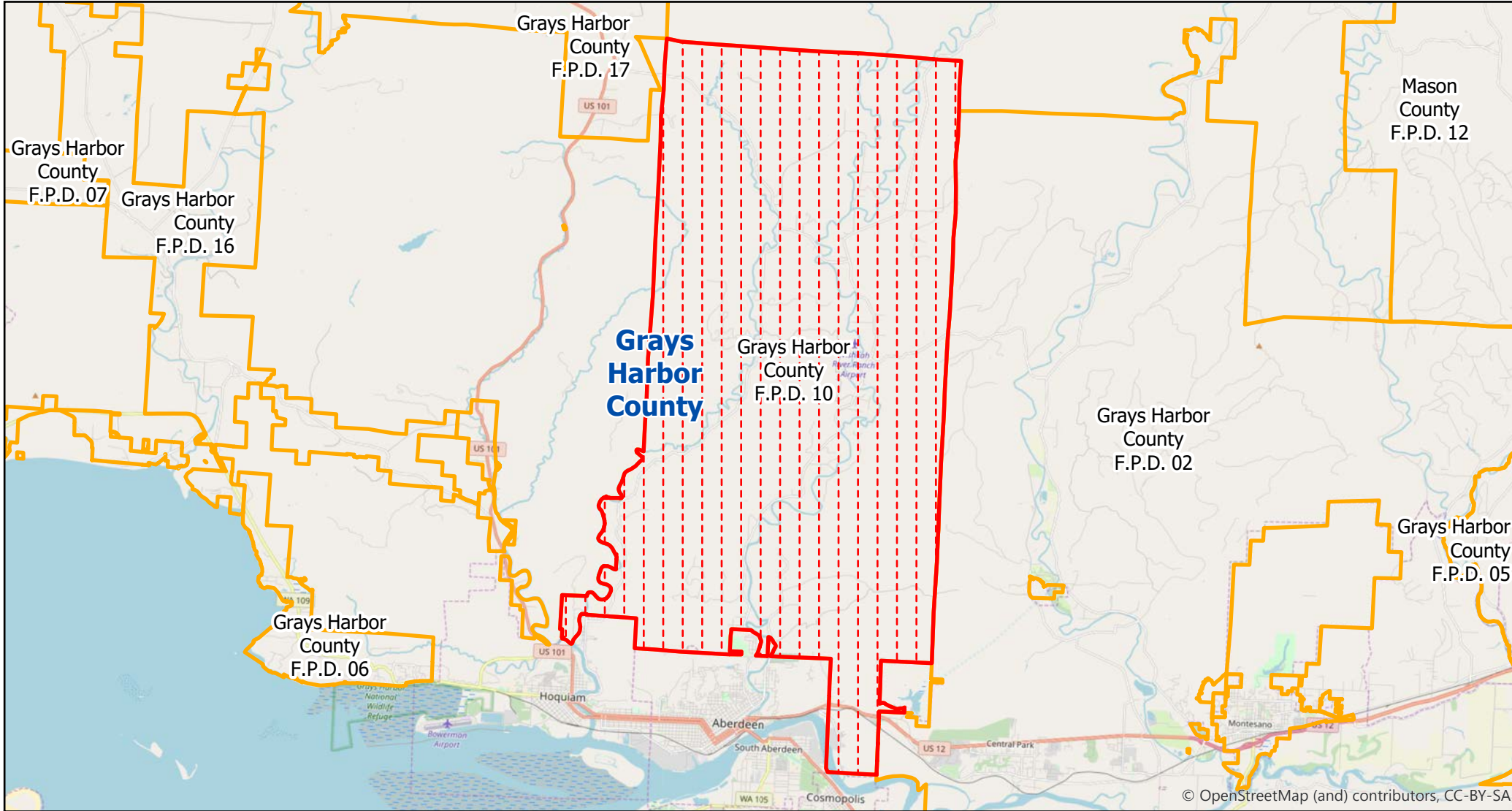
Disclaimer: By using these data, the user agrees that neither the Office of Financial Management nor the Washington Surveying and Rating Bureau shall be liable for any activity involving these data with regard to lost profits or savings or any other consequential damages; or the fitness for use of the data for a particular purpose; or the installation of the data, its use, or the results obtained.

Data source: Fire Protection Districts and City Limits [Shapefile], Washington Surveying and Rating Bureau, October 1, 2018.


Map prepared by Rob Kemp on October 10, 2018.





# Grays Harbor County F.P.D. 10



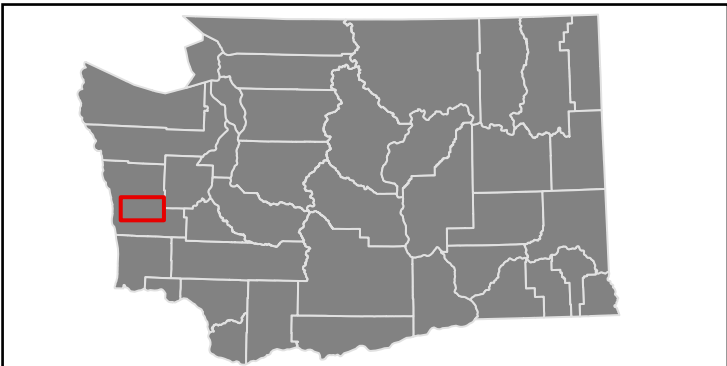
**(Unincorporated Portion Only)**


 County

 Selected Fire Protection District

 Fire Protection Districts

N  
0 0.75 1.5 3 Miles



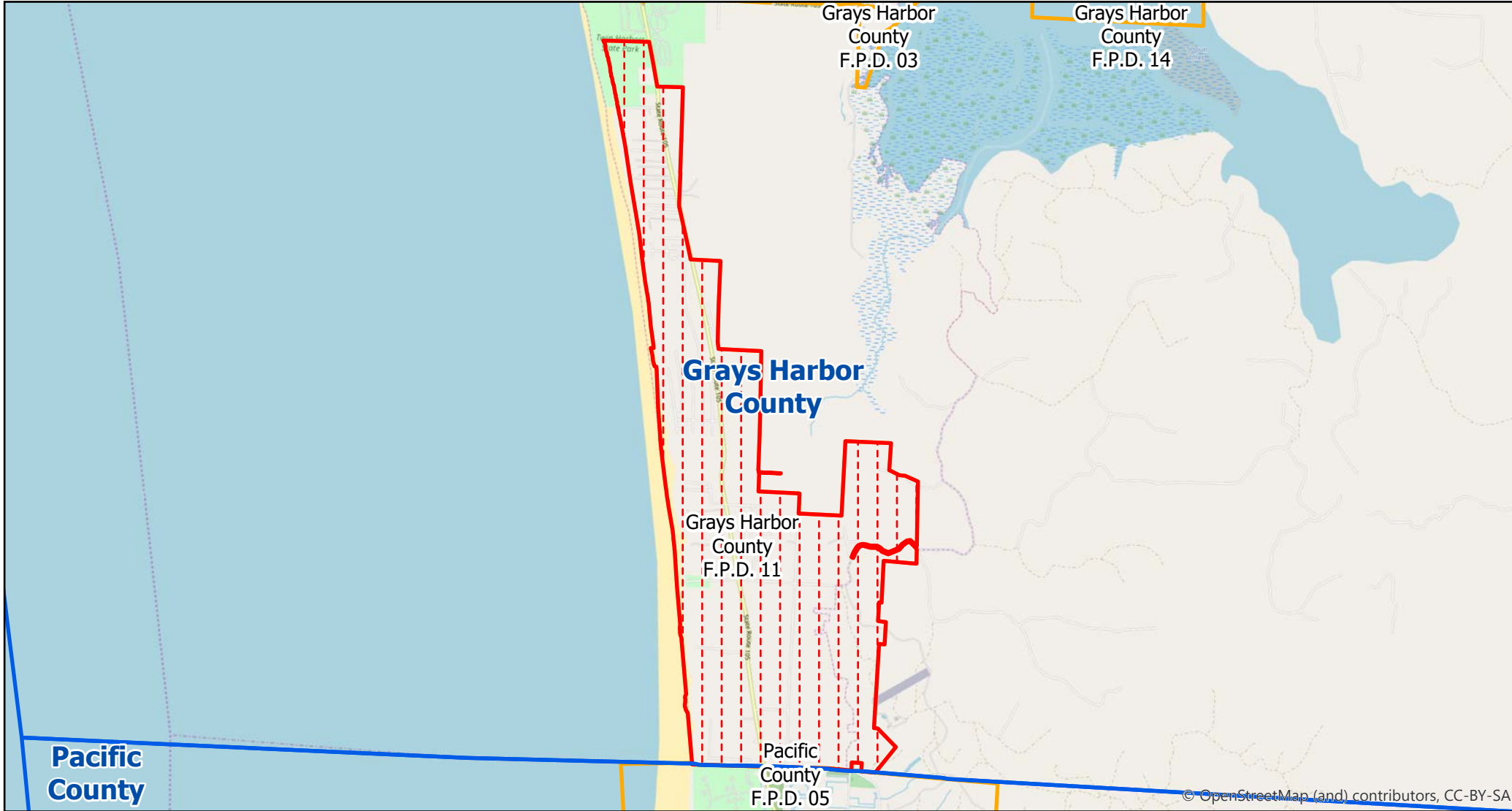
**Washington State  
Office of Financial Management  
Forecasting & Research Division**

Disclaimer: By using these data, the user agrees that neither the Office of Financial Management nor the Washington Surveying and Rating Bureau shall be liable for any activity involving these data with regard to lost profits or savings or any other consequential damages; or the fitness for use of the data for a particular purpose; or the installation of the data, its use, or the results obtained.




Data source: Fire Protection Districts and City Limits [Shapefile], Washington Surveying and Rating Bureau, October 1, 2018.

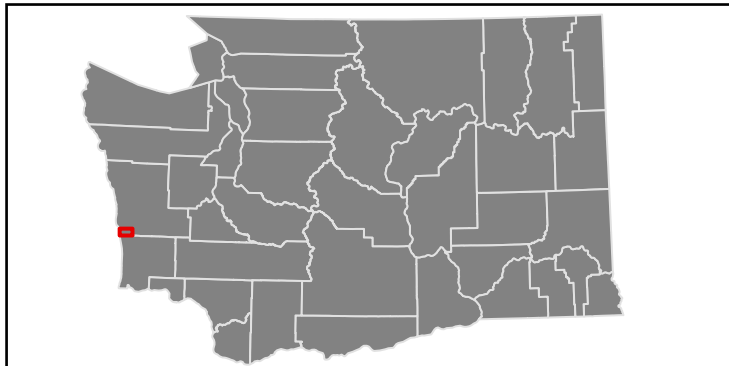
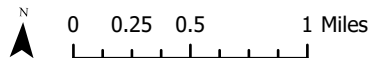
Map prepared by Rob Kemp on October 10, 2018.

# Grays Harbor County F.P.D. 11



## (Unincorporated Portion Only)

-  County
-  Selected Fire Protection District
-  Fire Protection Districts



## Washington State Office of Financial Management Forecasting & Research Division

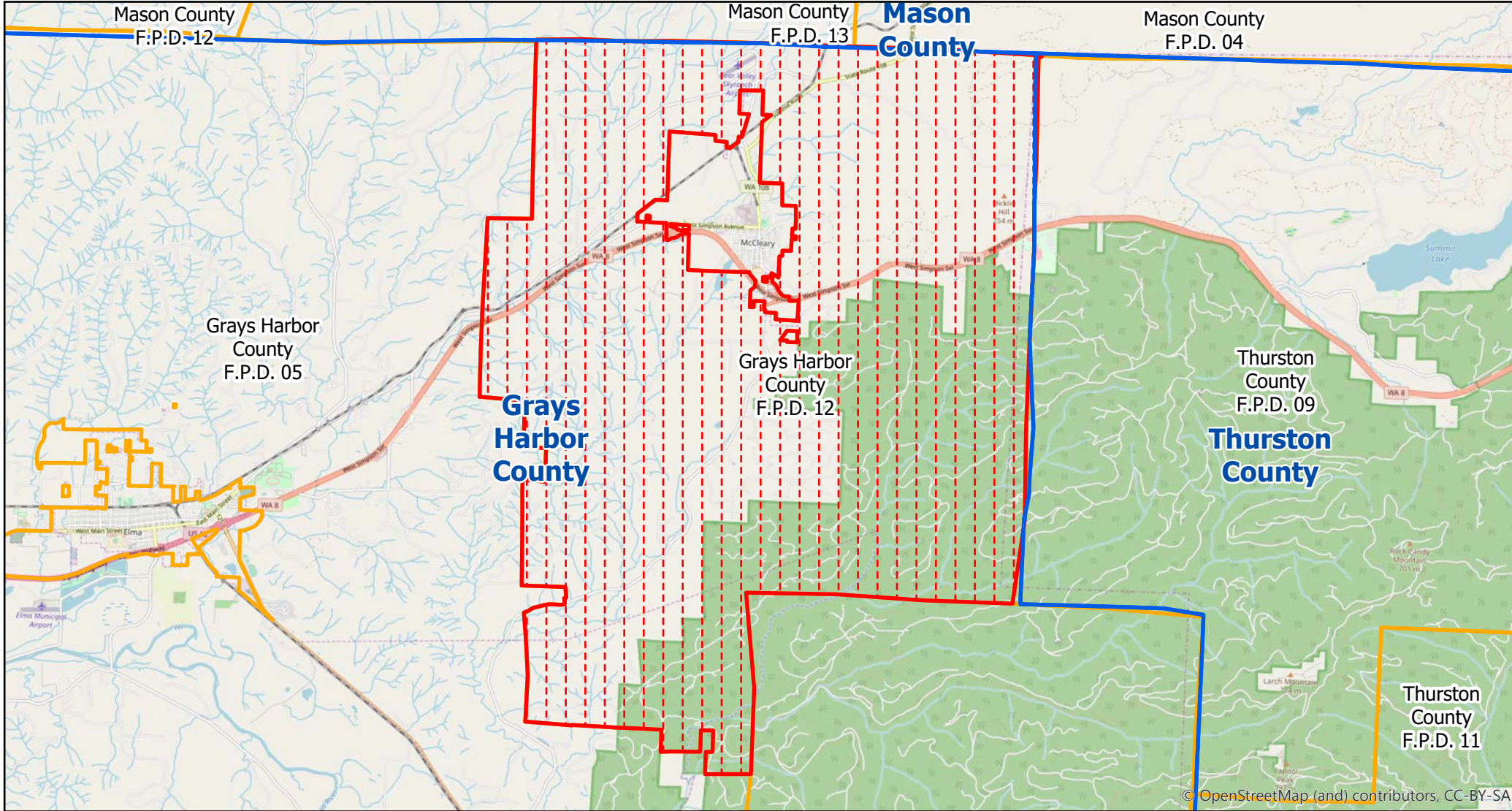
Disclaimer: By using these data, the user agrees that neither the Office of Financial Management nor the Washington Surveying and Rating Bureau shall be liable for any activity involving these data with regard to lost profits or savings or any other consequential damages; or the fitness for use of the data for a particular purpose; or the installation of the data, its use, or the results obtained.

Data source: Fire Protection Districts and City Limits [Shapefile], Washington Surveying and Rating Bureau, October 1, 2018.




Map prepared by Rob Kemp on October 10, 2018.

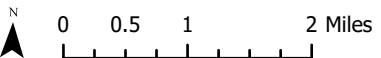


# Grays Harbor County F.P.D. 12



## (Unincorporated Portion Only)

-  County
-  Selected Fire Protection District
-  Fire Protection Districts



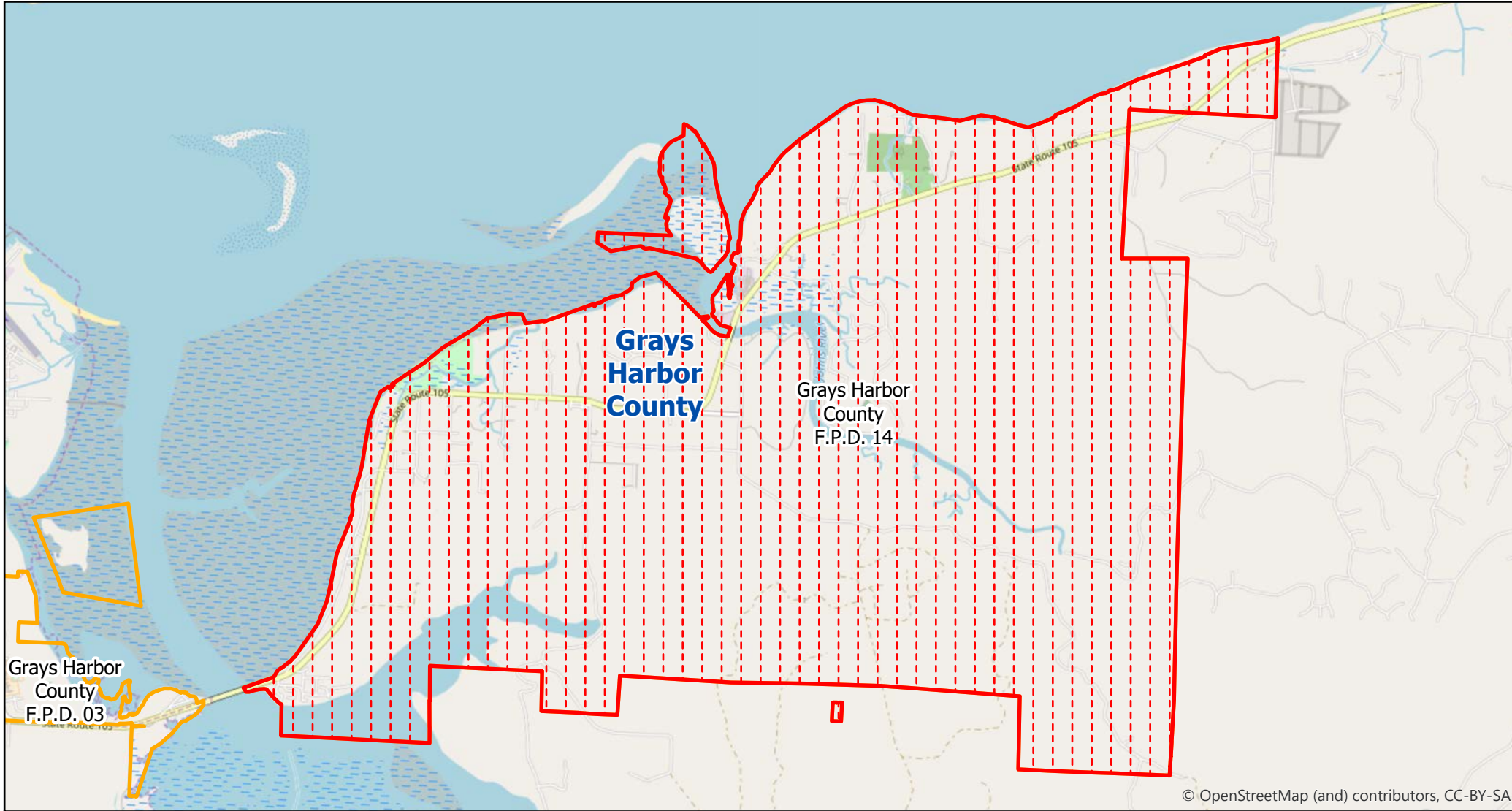
## Washington State Office of Financial Management Forecasting & Research Division

Disclaimer: By using these data, the user agrees that neither the Office of Financial Management nor the Washington Surveying and Rating Bureau shall be liable for any activity involving these data with regard to lost profits or savings or any other consequential damages; or the fitness for use of the data for a particular purpose; or the installation of the data, its use, or the results obtained.




Data source: Fire Protection Districts and City Limits [Shapefile], Washington Surveying and Rating Bureau, October 1, 2018.  
Map prepared by Rob Kemp on October 10, 2018.

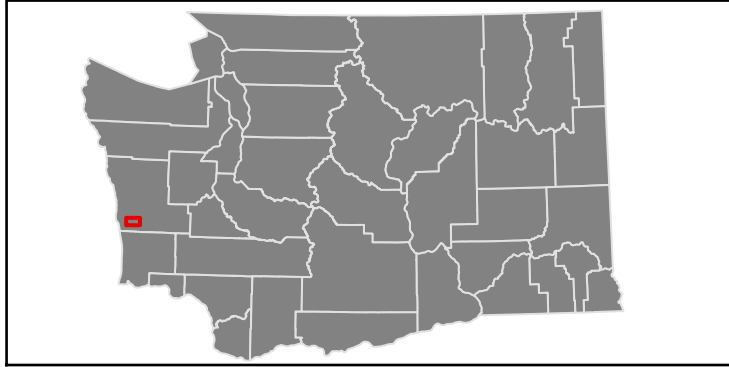
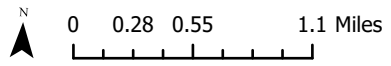


# Grays Harbor County F.P.D. 14



## (Unincorporated Portion Only)

-  County
-  Selected Fire Protection District
-  Fire Protection Districts



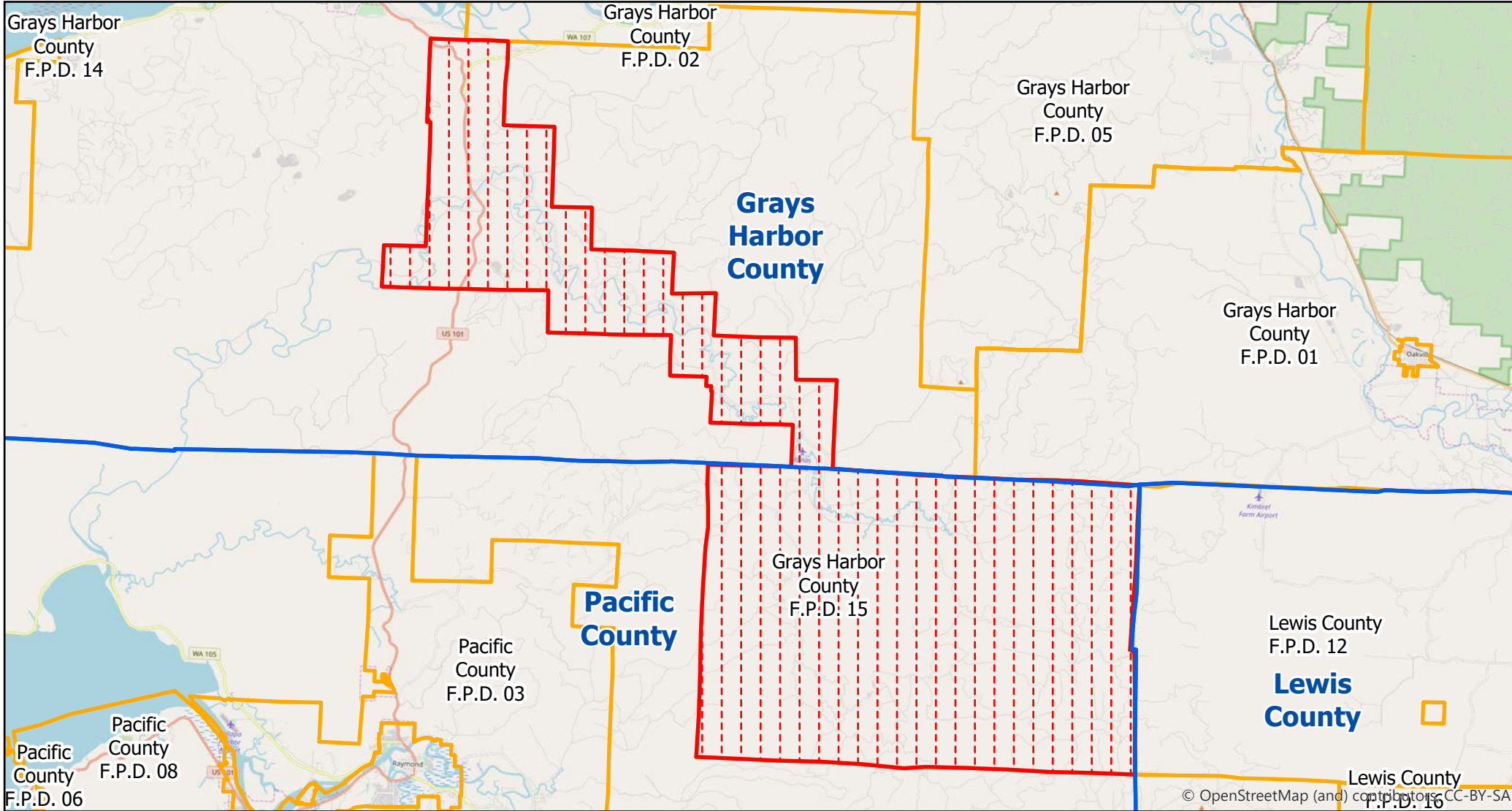
## Washington State Office of Financial Management Forecasting & Research Division

Disclaimer: By using these data, the user agrees that neither the Office of Financial Management nor the Washington Surveying and Rating Bureau shall be liable for any activity involving these data with regard to lost profits or savings or any other consequential damages; or the fitness for use of the data for a particular purpose; or the installation of the data, its use, or the results obtained.

Data source: Fire Protection Districts and City Limits [Shapefile], Washington Surveying and Rating Bureau, October 1, 2018.  
Map prepared by Rob Kemp on October 10, 2018.

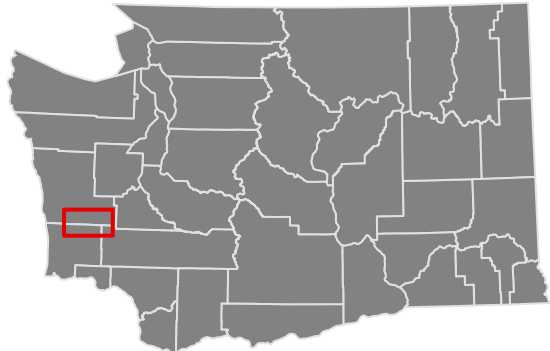
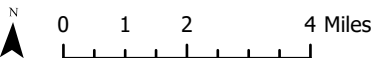


# Grays Harbor County F.P.D. 15



## (Unincorporated Portion Only)

-  County
-  Selected Fire Protection District
-  Fire Protection Districts



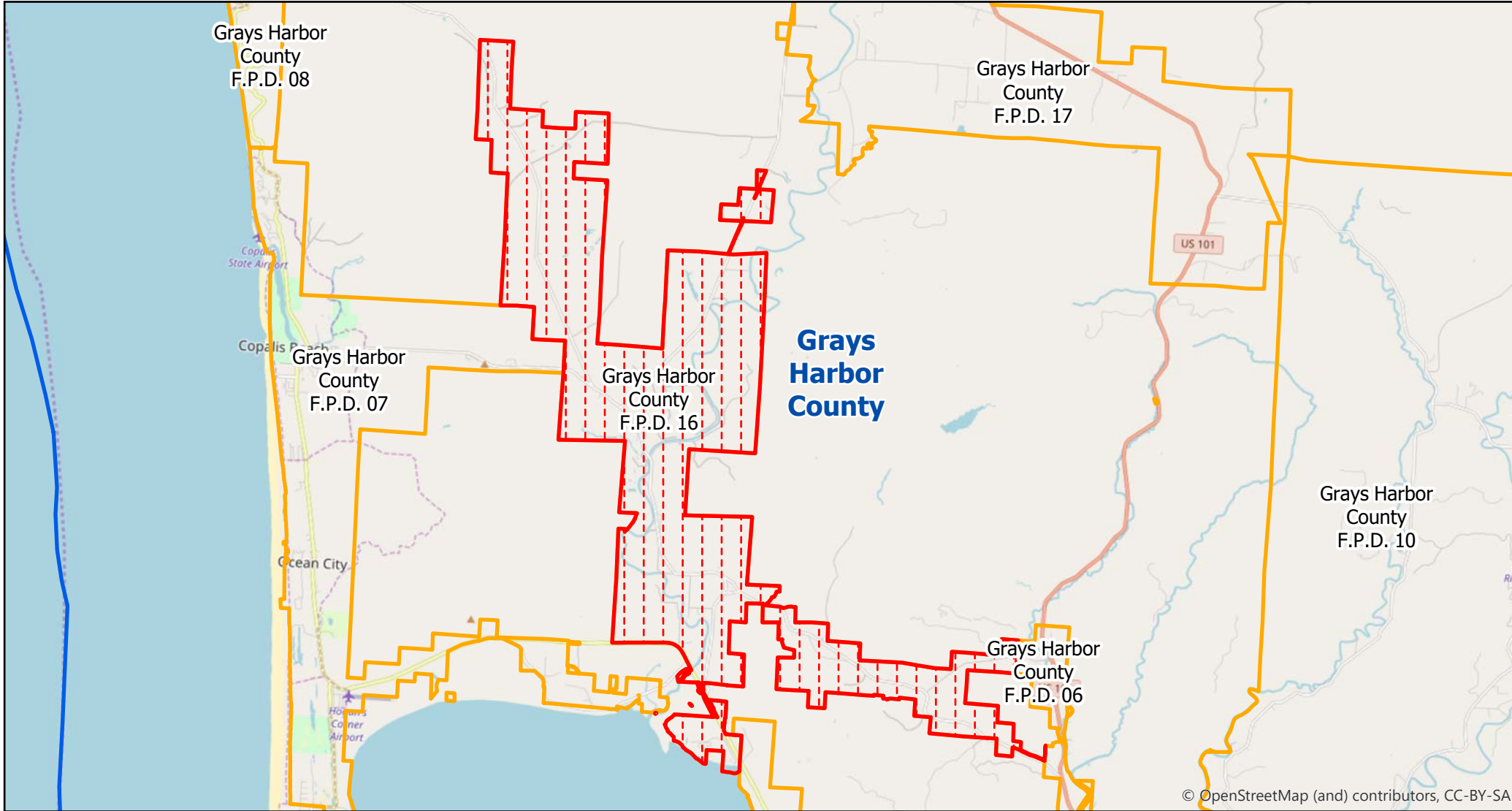
## Washington State Office of Financial Management Forecasting & Research Division

Disclaimer: By using these data, the user agrees that neither the Office of Financial Management nor the Washington Surveying and Rating Bureau shall be liable for any activity involving these data with regard to lost profits or savings or any other consequential damages; or the fitness for use of the data for a particular purpose; or the installation of the data, its use, or the results obtained.




Data source: Fire Protection Districts and City Limits [Shapefile], Washington Surveying and Rating Bureau, October 1, 2018.

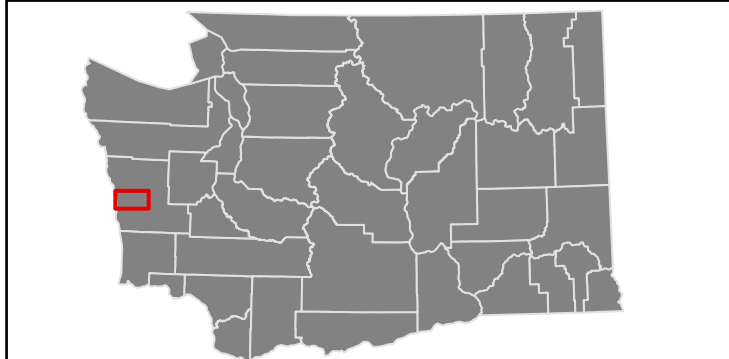
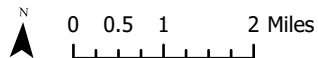
Map prepared by Rob Kemp on October 10, 2018.

# Grays Harbor County F.P.D. 16



## (Unincorporated Portion Only)

-  County
-  Selected Fire Protection District
-  Fire Protection Districts



## Washington State Office of Financial Management Forecasting & Research Division

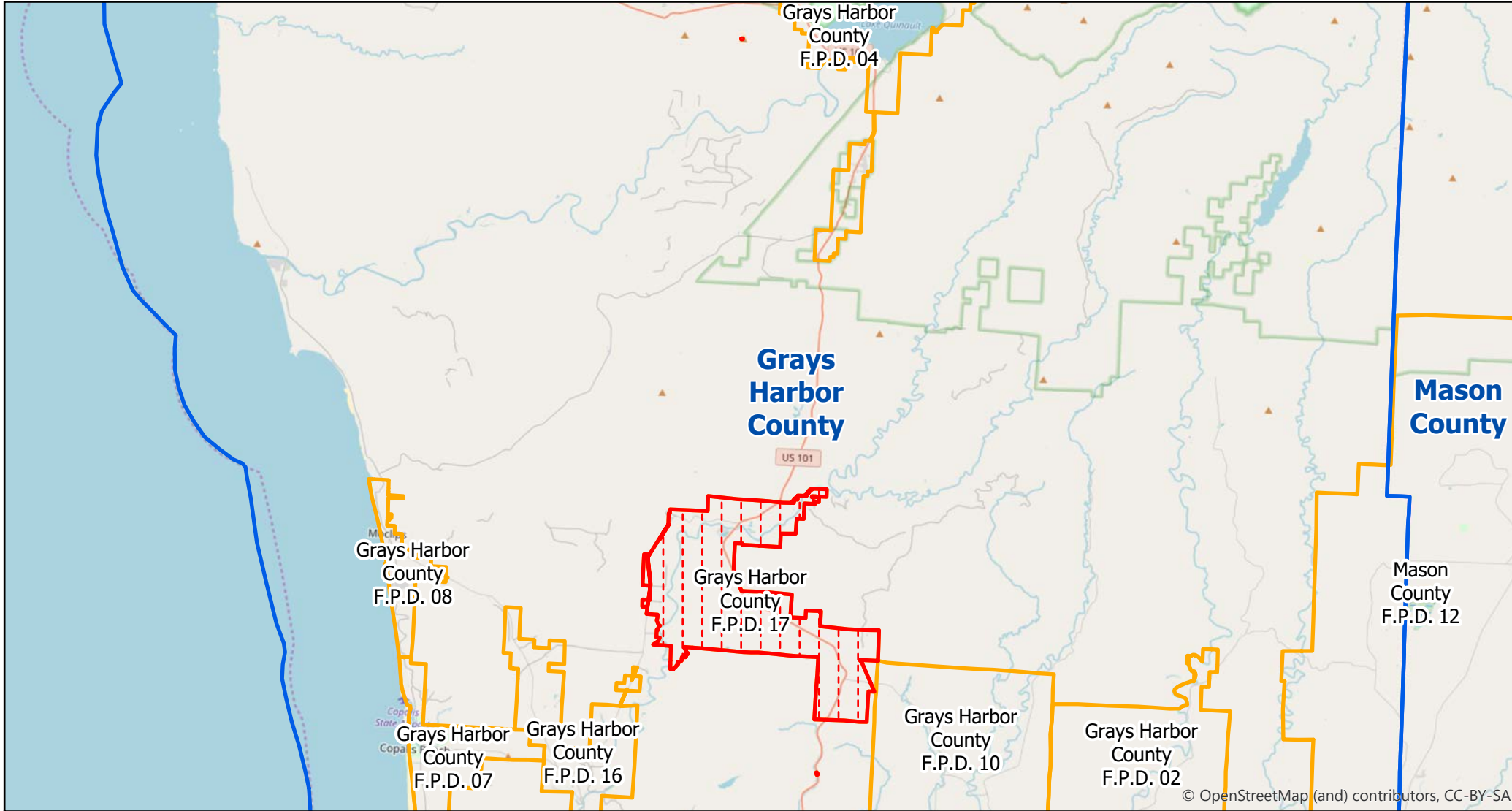
Disclaimer: By using these data, the user agrees that neither the Office of Financial Management nor the Washington Surveying and Rating Bureau shall be liable for any activity involving these data with regard to lost profits or savings or any other consequential damages; or the fitness for use of the data for a particular purpose; or the installation of the data, its use, or the results obtained.

Data source: Fire Protection Districts and City Limits [Shapefile], Washington Surveying and Rating Bureau, October 1, 2018.

Map prepared by Rob Kemp on October 10, 2018.

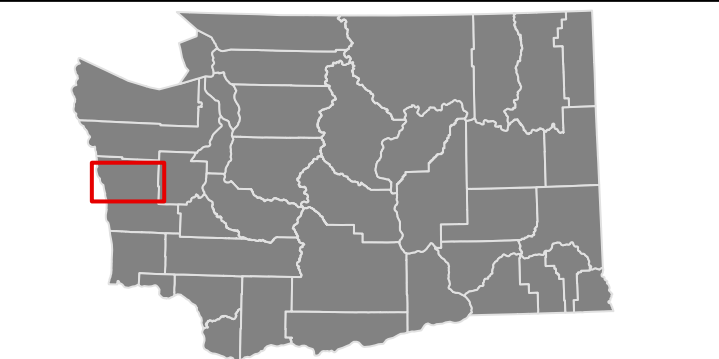
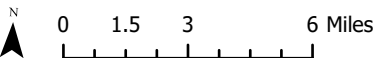


# Grays Harbor County F.P.D. 17



## (Unincorporated Portion Only)

-  County
-  Selected Fire Protection District
-  Fire Protection Districts



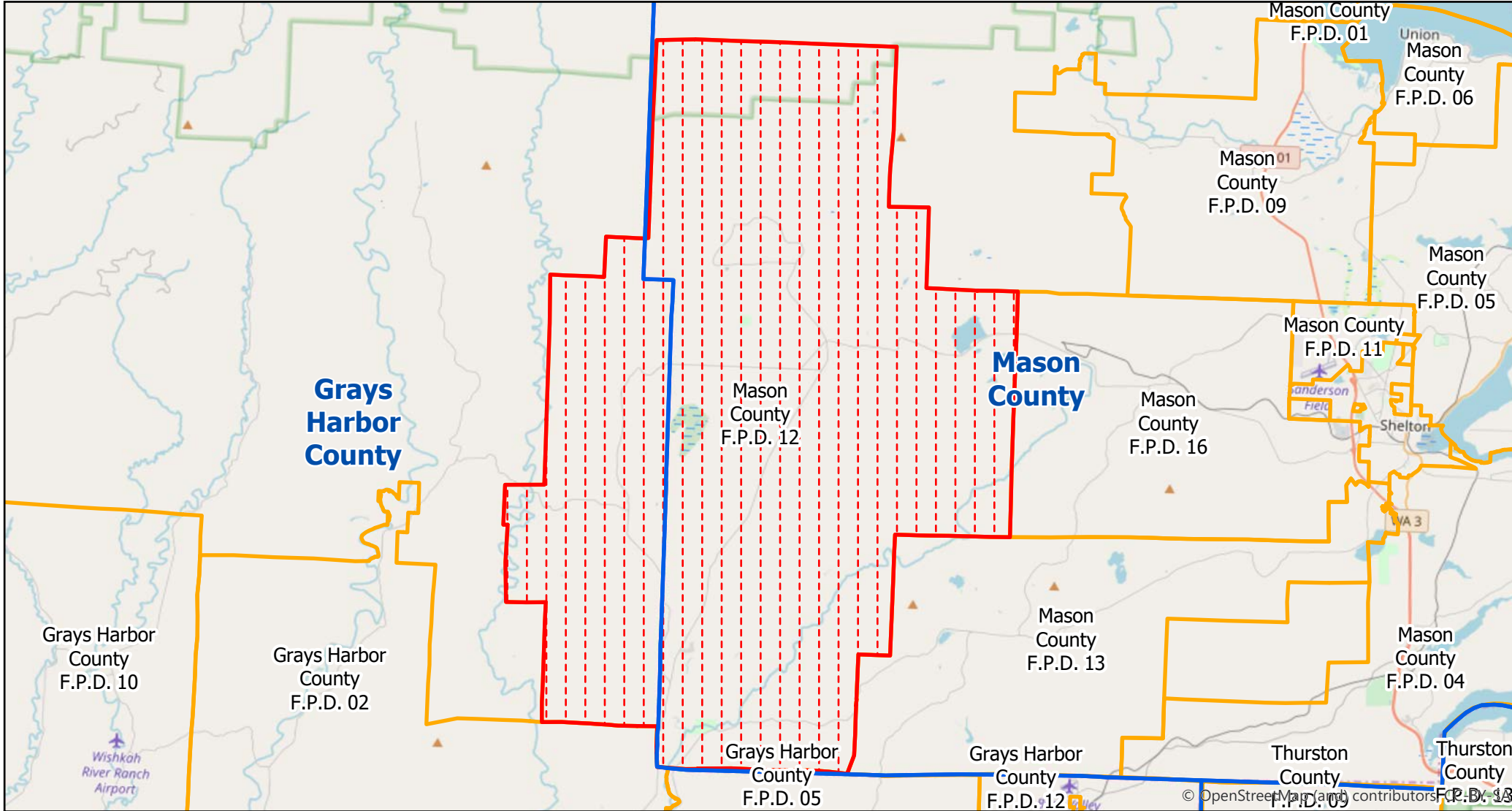
## Washington State Office of Financial Management Forecasting & Research Division

Disclaimer: By using these data, the user agrees that neither the Office of Financial Management nor the Washington Surveying and Rating Bureau shall be liable for any activity involving these data with regard to lost profits or savings or any other consequential damages; or the fitness for use of the data for a particular purpose; or the installation of the data, its use, or the results obtained.




Data source: Fire Protection Districts and City Limits [Shapefile], Washington Surveying and Rating Bureau, October 1, 2018.

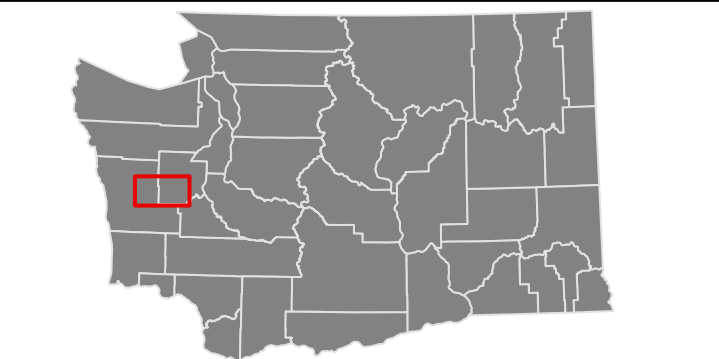
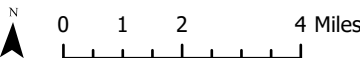
Map prepared by Rob Kemp on October 10, 2018.

# Mason County F.P.D. 12



## (Unincorporated Portion Only)

-  County
-  Selected Fire Protection District
-  Fire Protection Districts



## Washington State Office of Financial Management Forecasting & Research Division

Disclaimer: By using these data, the user agrees that neither the Office of Financial Management nor the Washington Surveying and Rating Bureau shall be liable for any activity involving these data with regard to lost profits or savings or any other consequential damages; or the fitness for use of the data for a particular purpose; or the installation of the data, its use, or the results obtained.

Data source: Fire Protection Districts and City Limits [Shapefile], Washington Surveying and Rating Bureau, October 1, 2018.

Map prepared by Rob Kemp on October 10, 2018.