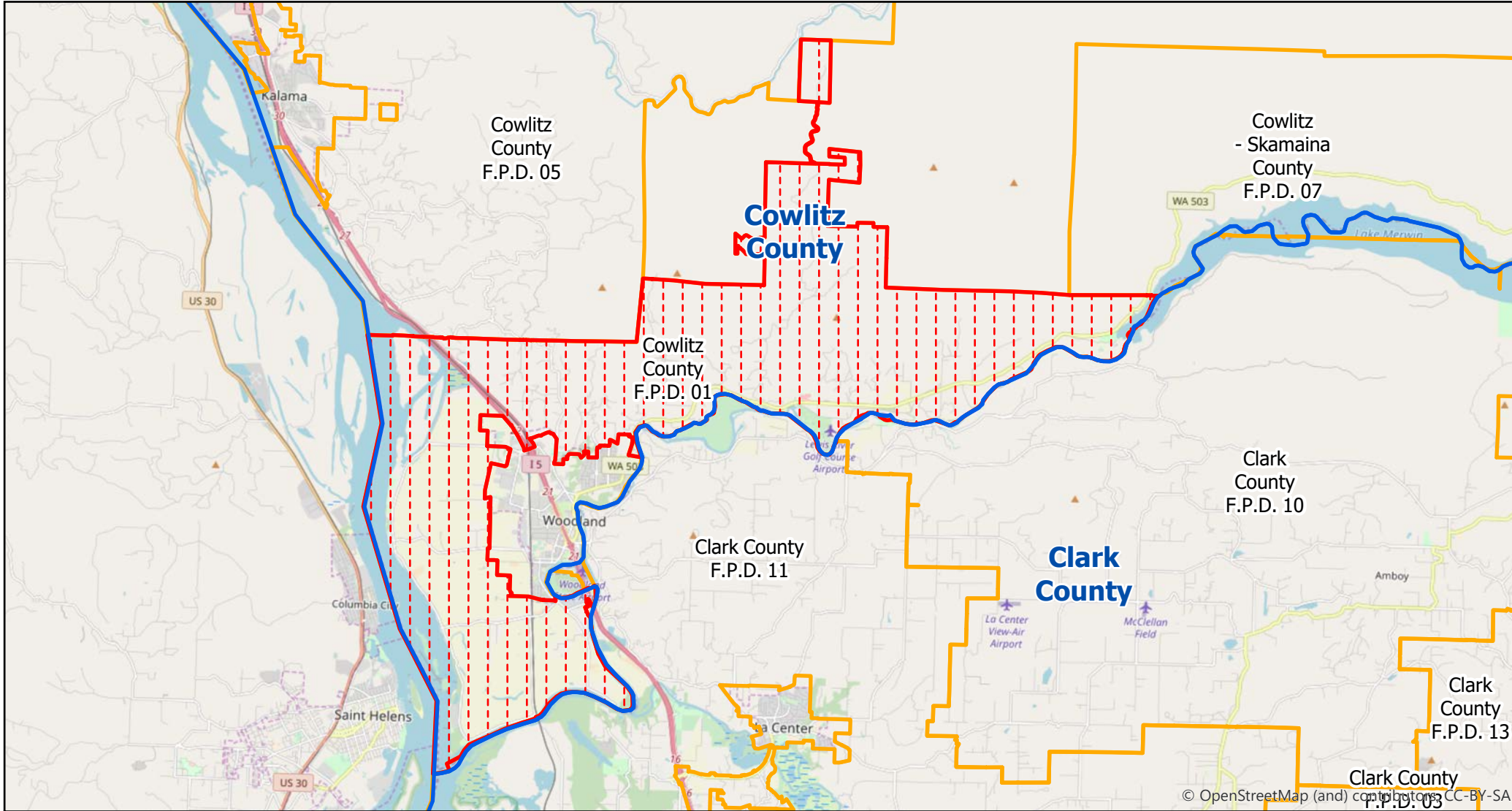



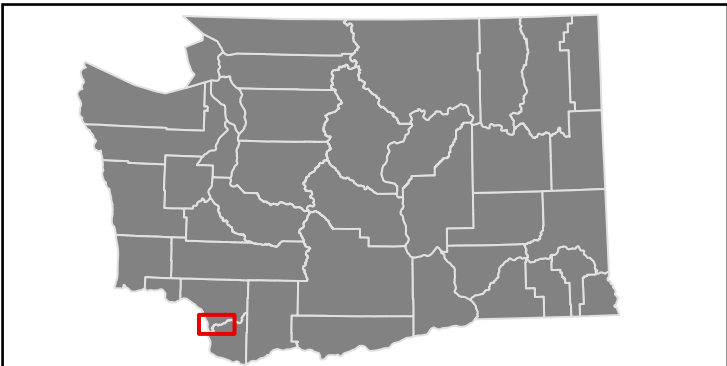
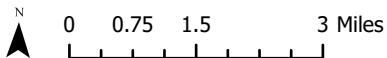


Cowlitz County F.P.D. 01



(Unincorporated Portion Only)

-  County
-  Selected Fire Protection District
-  Fire Protection Districts



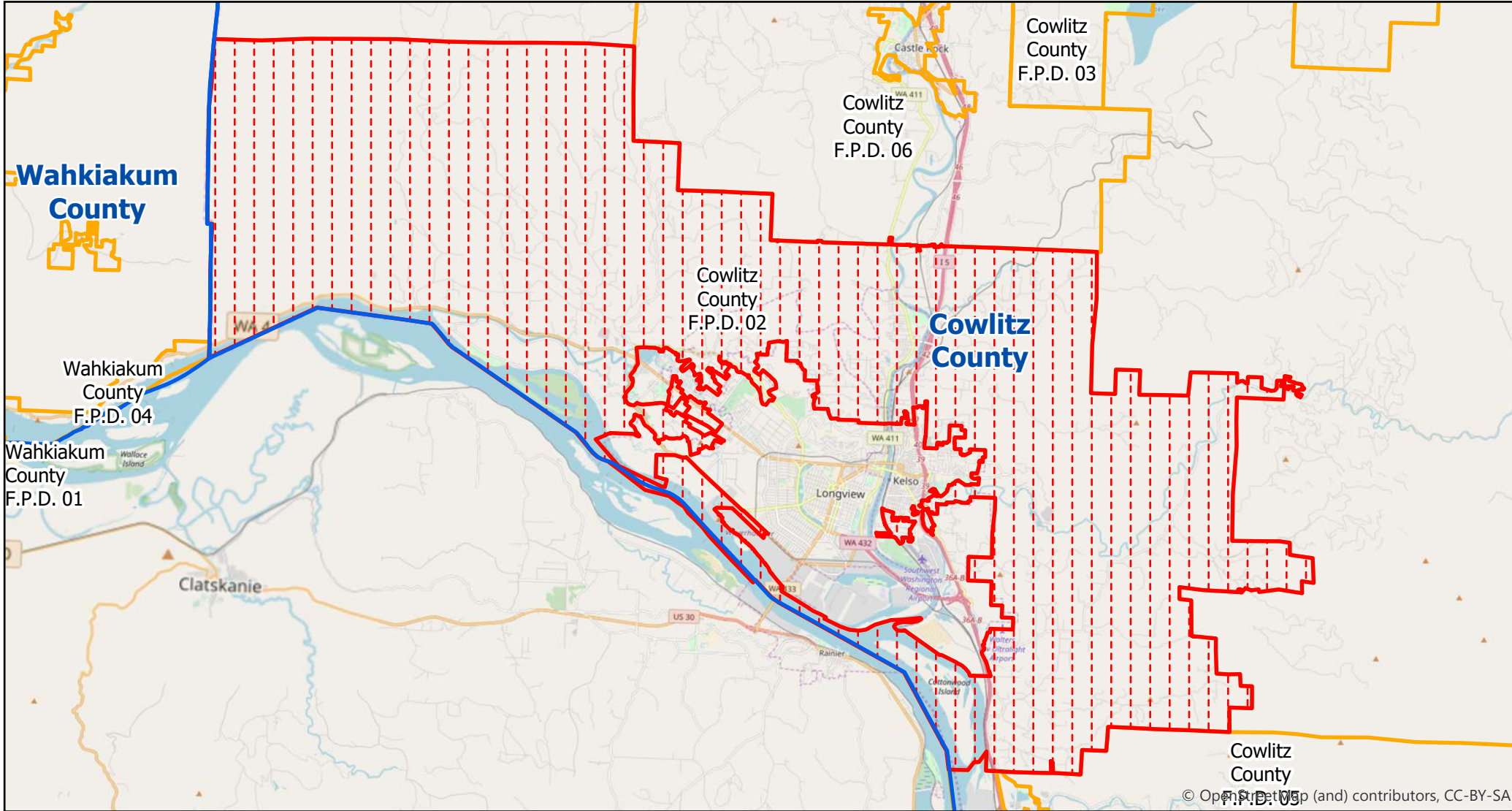
Washington State Office of Financial Management Forecasting & Research Division

Disclaimer: By using these data, the user agrees that neither the Office of Financial Management nor the Washington Surveying and Rating Bureau shall be liable for any activity involving these data with regard to lost profits or savings or any other consequential damages; or the fitness for use of the data for a particular purpose; or the installation of the data, its use, or the results obtained.




Data source: Fire Protection Districts and City Limits [Shapefile], Washington Surveying and Rating Bureau, October 1, 2018.

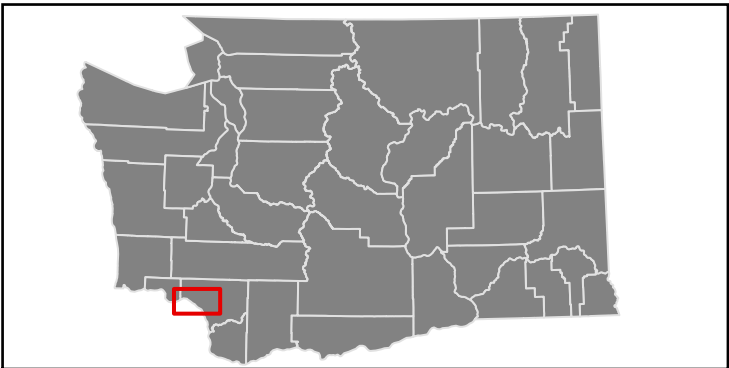
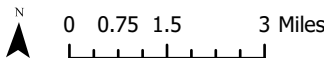
Map prepared by Rob Kemp on October 10, 2018.

Cowlitz County F.P.D. 02



(Unincorporated Portion Only)

-  County
-  Selected Fire Protection District
-  Fire Protection Districts

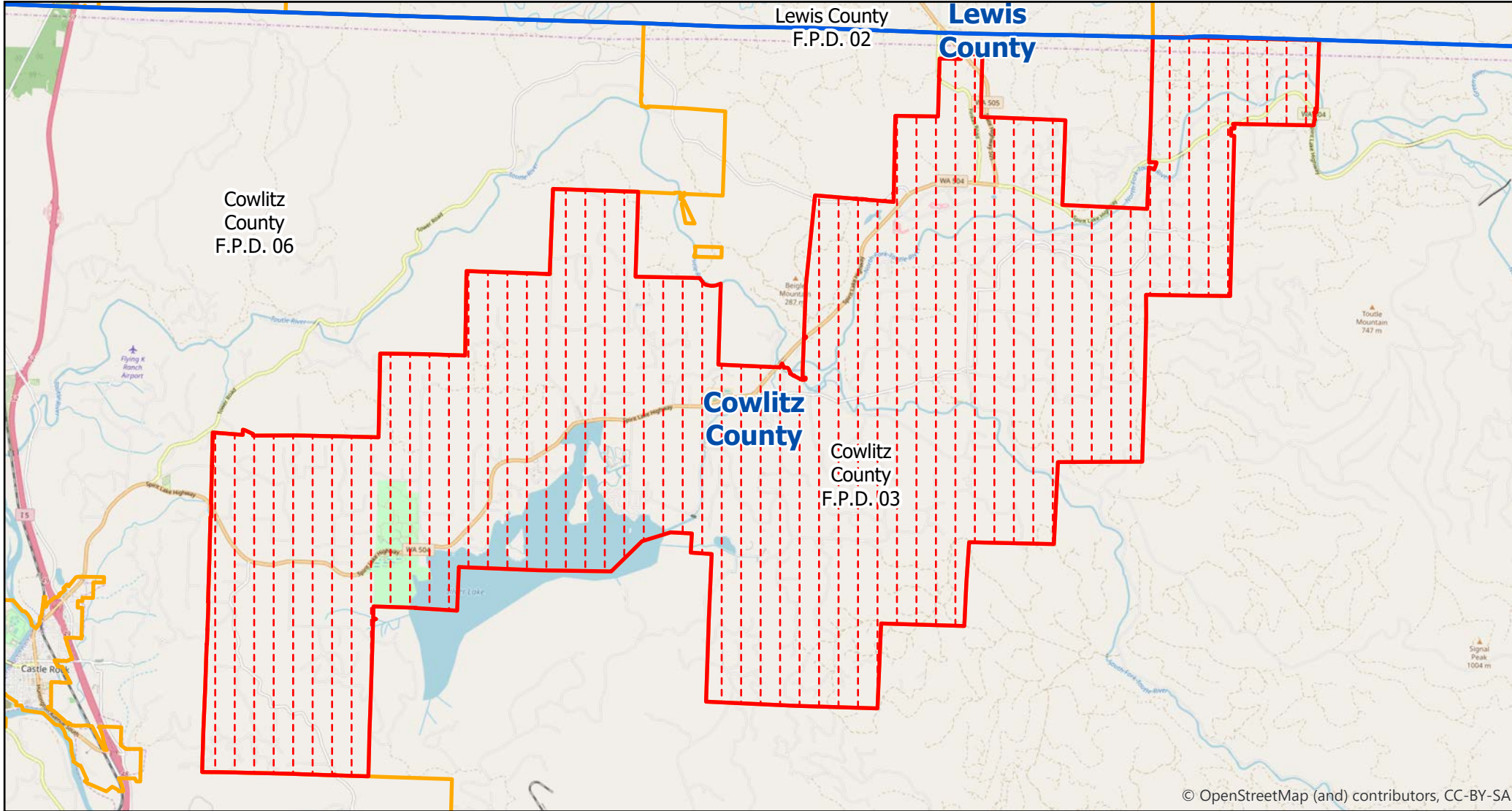


Washington State Office of Financial Management Forecasting & Research Division

Disclaimer: By using these data, the user agrees that neither the Office of Financial Management nor the Washington Surveying and Rating Bureau shall be liable for any activity involving these data with regard to lost profits or savings or any other consequential damages; or the fitness for use of the data for a particular purpose; or the installation of the data, its use, or the results obtained.

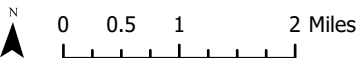
Data source: Fire Protection Districts and City Limits [Shapefile], Washington Surveying and Rating Bureau, October 1, 2018.
Map prepared by Rob Kemp on October 10, 2018.

Cowlitz County F.P.D. 03



(Unincorporated Portion Only)

- County
- Selected Fire Protection District
- Fire Protection Districts



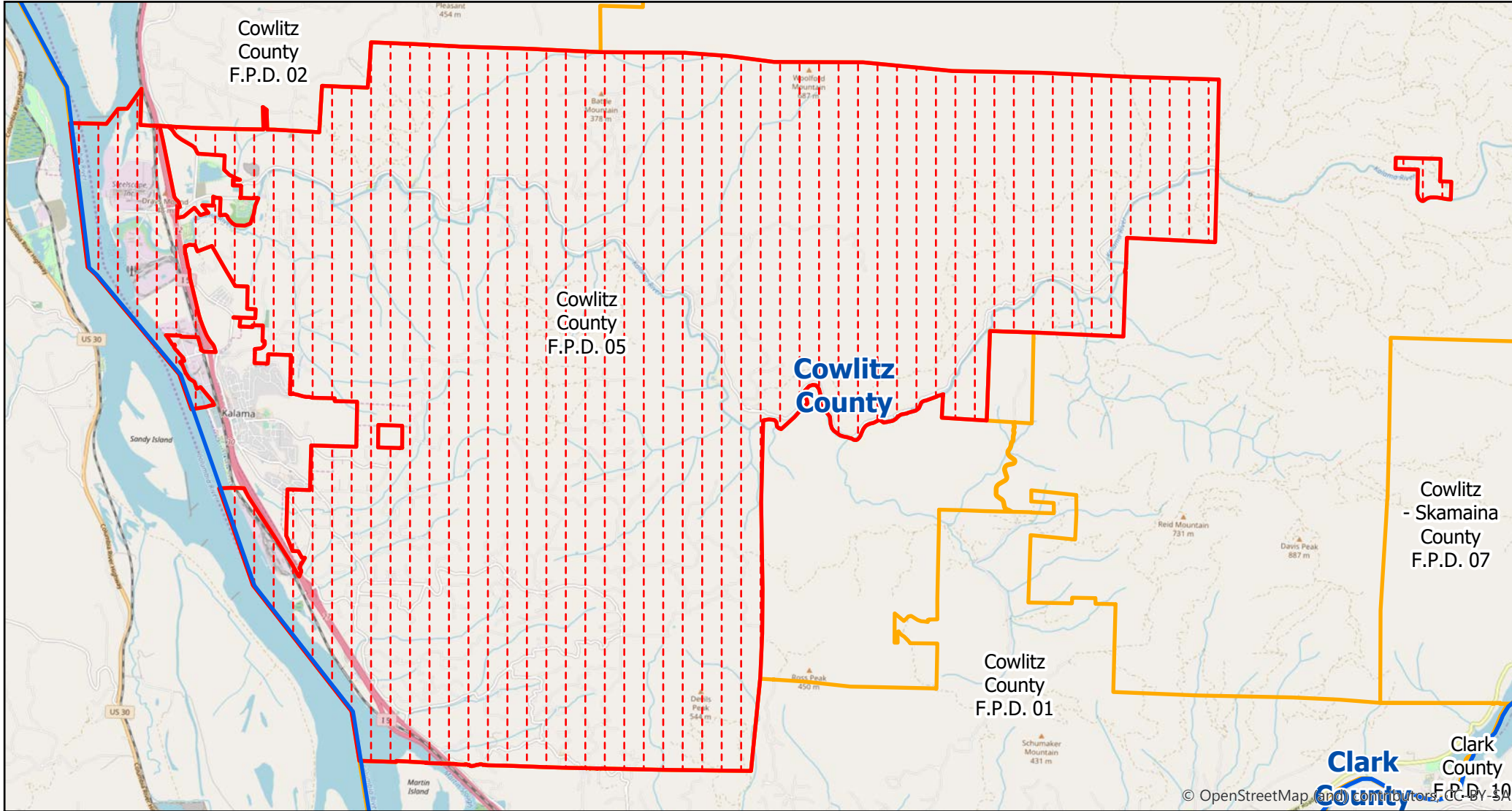
Washington State Office of Financial Management Forecasting & Research Division

Disclaimer: By using these data, the user agrees that neither the Office of Financial Management nor the Washington Surveying and Rating Bureau shall be liable for any activity involving these data with regard to lost profits or savings or any other consequential damages; or the fitness for use of the data for a particular purpose; or the installation of the data, its use, or the results obtained.

Data source: Fire Protection Districts and City Limits [Shapefile], Washington Surveying and Rating Bureau, October 1, 2018.

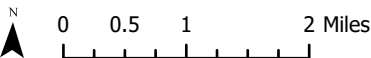
Map prepared by Rob Kemp on October 10, 2018.

Cowlitz County F.P.D. 05



(Unincorporated Portion Only)

- County
- Selected Fire Protection District
- Fire Protection Districts

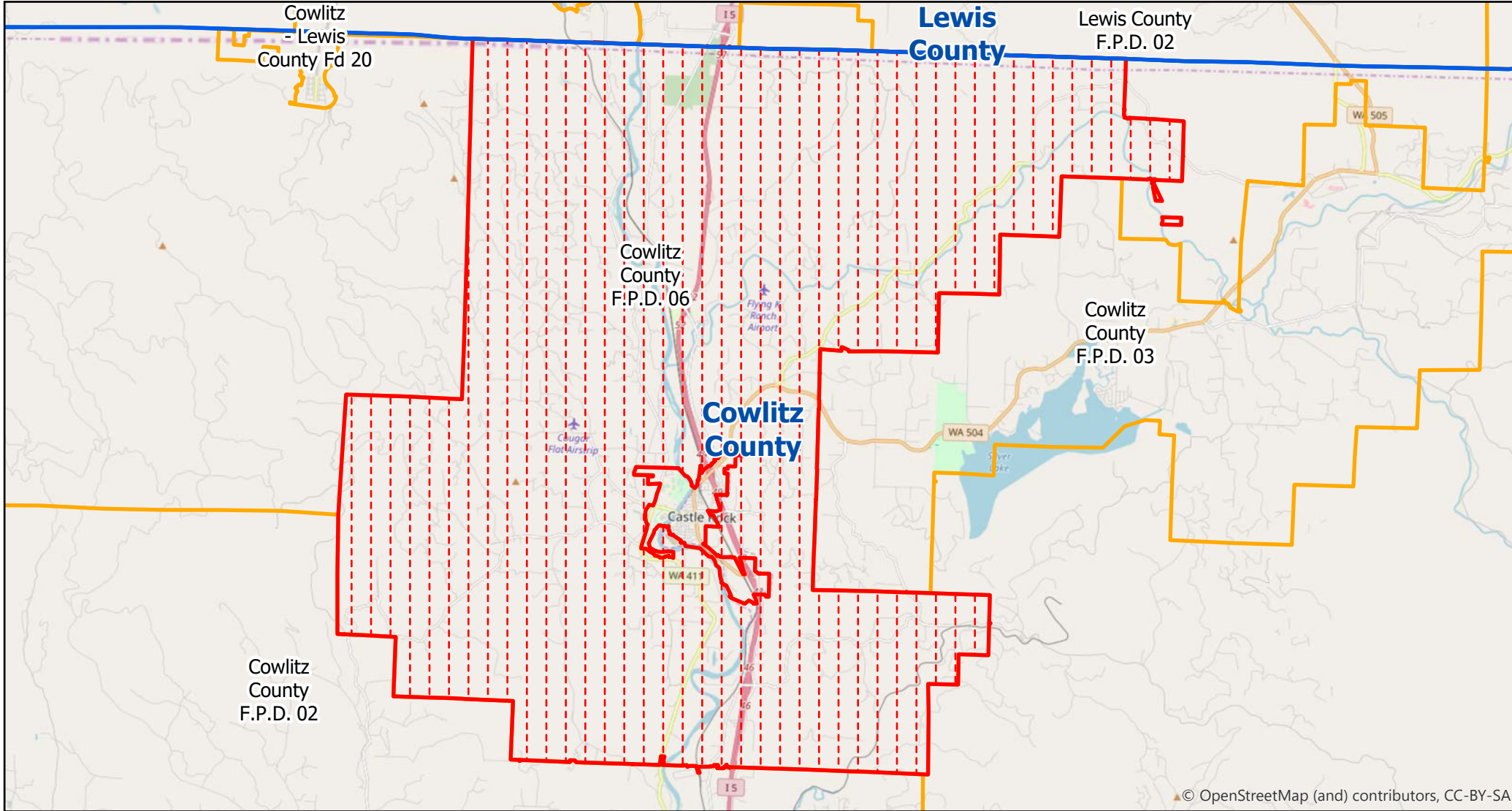


Washington State Office of Financial Management Forecasting & Research Division

Disclaimer: By using these data, the user agrees that neither the Office of Financial Management nor the Washington Surveying and Rating Bureau shall be liable for any activity involving these data with regard to lost profits or savings or any other consequential damages; or the fitness for use of the data for a particular purpose; or the installation of the data, its use, or the results obtained.

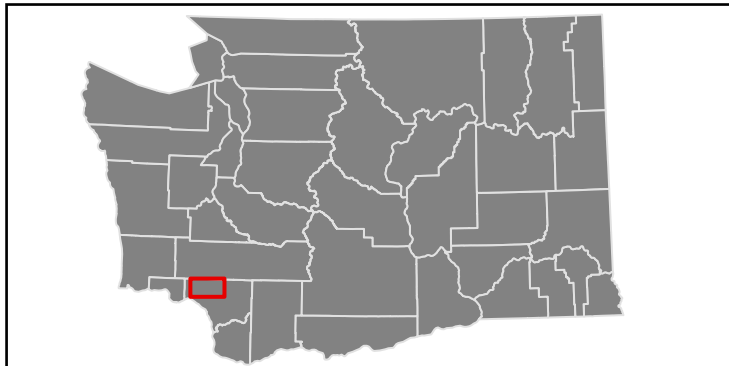
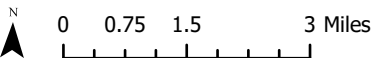
Data source: Fire Protection Districts and City Limits [Shapefile], Washington Surveying and Rating Bureau, October 1, 2018.
Map prepared by Rob Kemp on October 10, 2018.

Cowlitz County F.P.D. 06



(Unincorporated Portion Only)

- County
- Selected Fire Protection District
- Fire Protection Districts



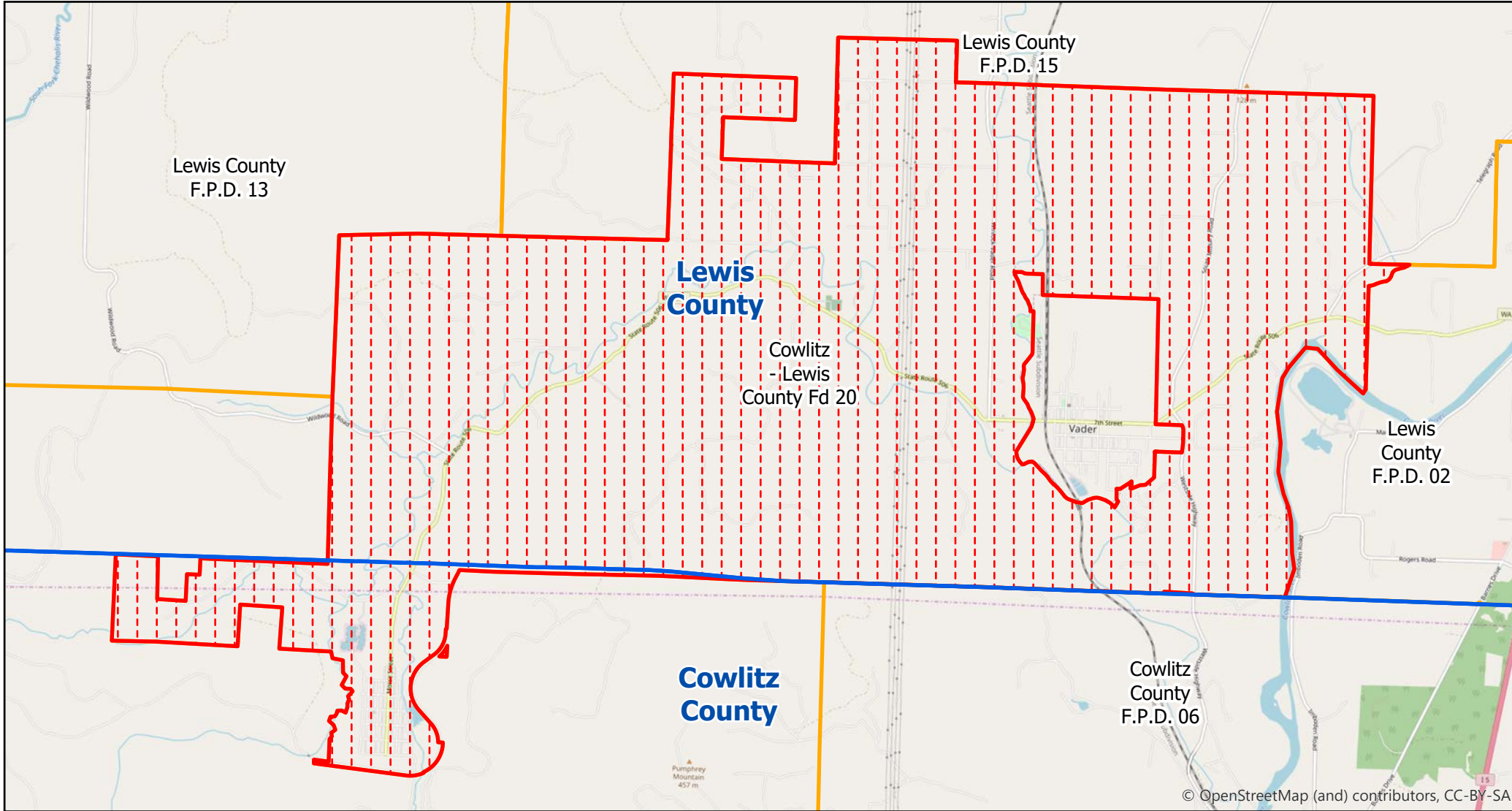
Washington State Office of Financial Management Forecasting & Research Division

Disclaimer: By using these data, the user agrees that neither the Office of Financial Management nor the Washington Surveying and Rating Bureau shall be liable for any activity involving these data with regard to lost profits or savings or any other consequential damages; or the fitness for use of the data for a particular purpose; or the installation of the data, its use, or the results obtained.




Data source: Fire Protection Districts and City Limits [Shapefile], Washington Surveying and Rating Bureau, October 1, 2018.

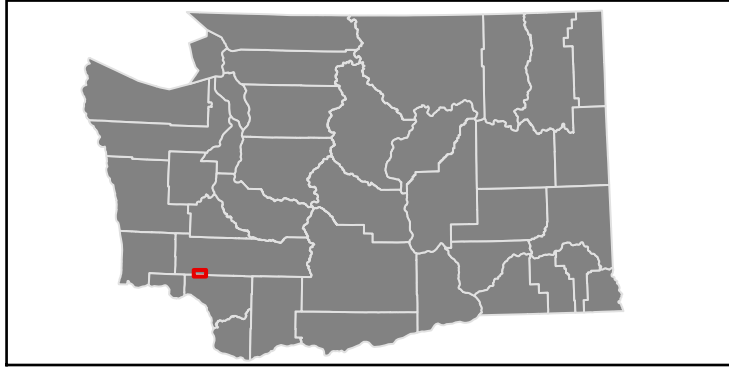
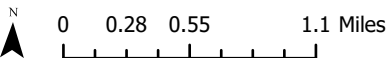
Map prepared by Rob Kemp on October 10, 2018.

Cowlitz - Lewis County Fd 20



(Unincorporated Portion Only)

-  County
-  Selected Fire Protection District
-  Fire Protection Districts



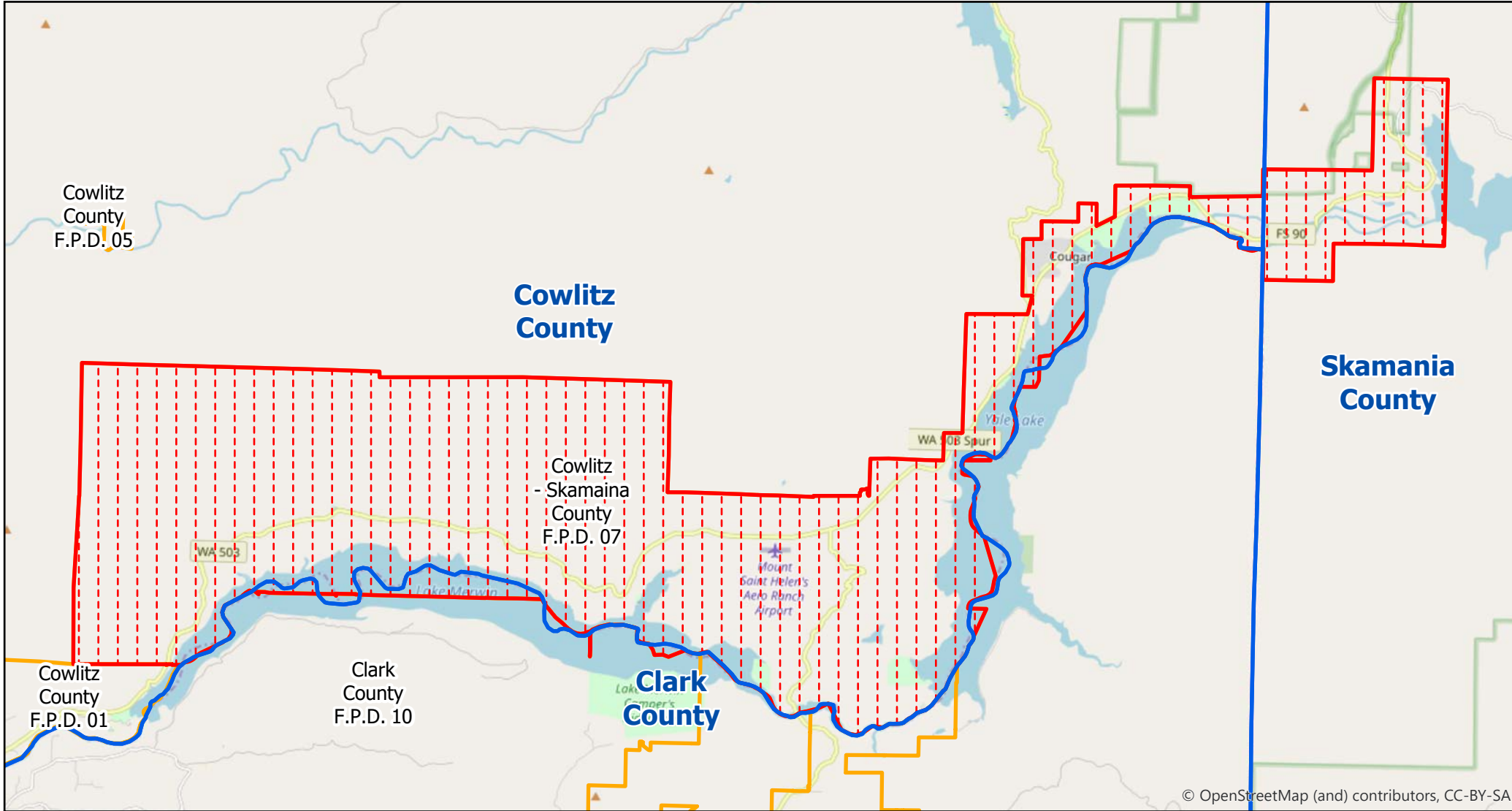
Washington State Office of Financial Management Forecasting & Research Division

Disclaimer: By using these data, the user agrees that neither the Office of Financial Management nor the Washington Surveying and Rating Bureau shall be liable for any activity involving these data with regard to lost profits or savings or any other consequential damages; or the fitness for use of the data for a particular purpose; or the installation of the data, its use, or the results obtained.




Data source: Fire Protection Districts and City Limits [Shapefile], Washington Surveying and Rating Bureau, October 1, 2018.

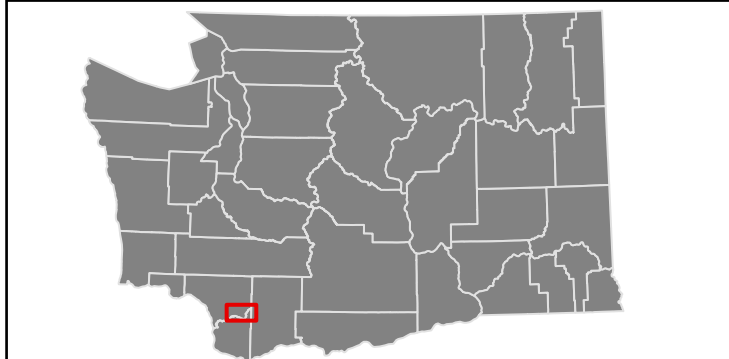
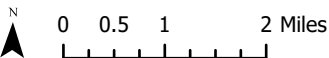
Map prepared by Rob Kemp on October 10, 2018.

Cowlitz - Skamaina County F.P.D. 07



(Unincorporated Portion Only)

-  County
-  Selected Fire Protection District
-  Fire Protection Districts



Washington State Office of Financial Management Forecasting & Research Division

Disclaimer: By using these data, the user agrees that neither the Office of Financial Management nor the Washington Surveying and Rating Bureau shall be liable for any activity involving these data with regard to lost profits or savings or any other consequential damages; or the fitness for use of the data for a particular purpose; or the installation of the data, its use, or the results obtained.

Data source: Fire Protection Districts and City Limits [Shapefile], Washington Surveying and Rating Bureau, October 1, 2018.

Map prepared by Rob Kemp on October 10, 2018.