




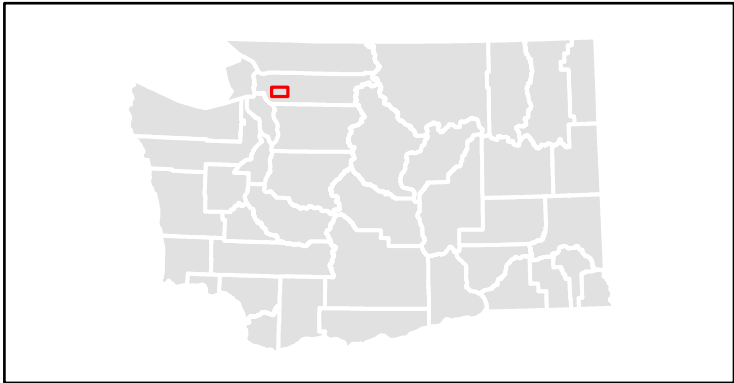
(Unincorporated Portion Only)

 County

 Fire Protection District

 Selected Fire Protection District

N 0 0.35 0.7 1.4 Miles



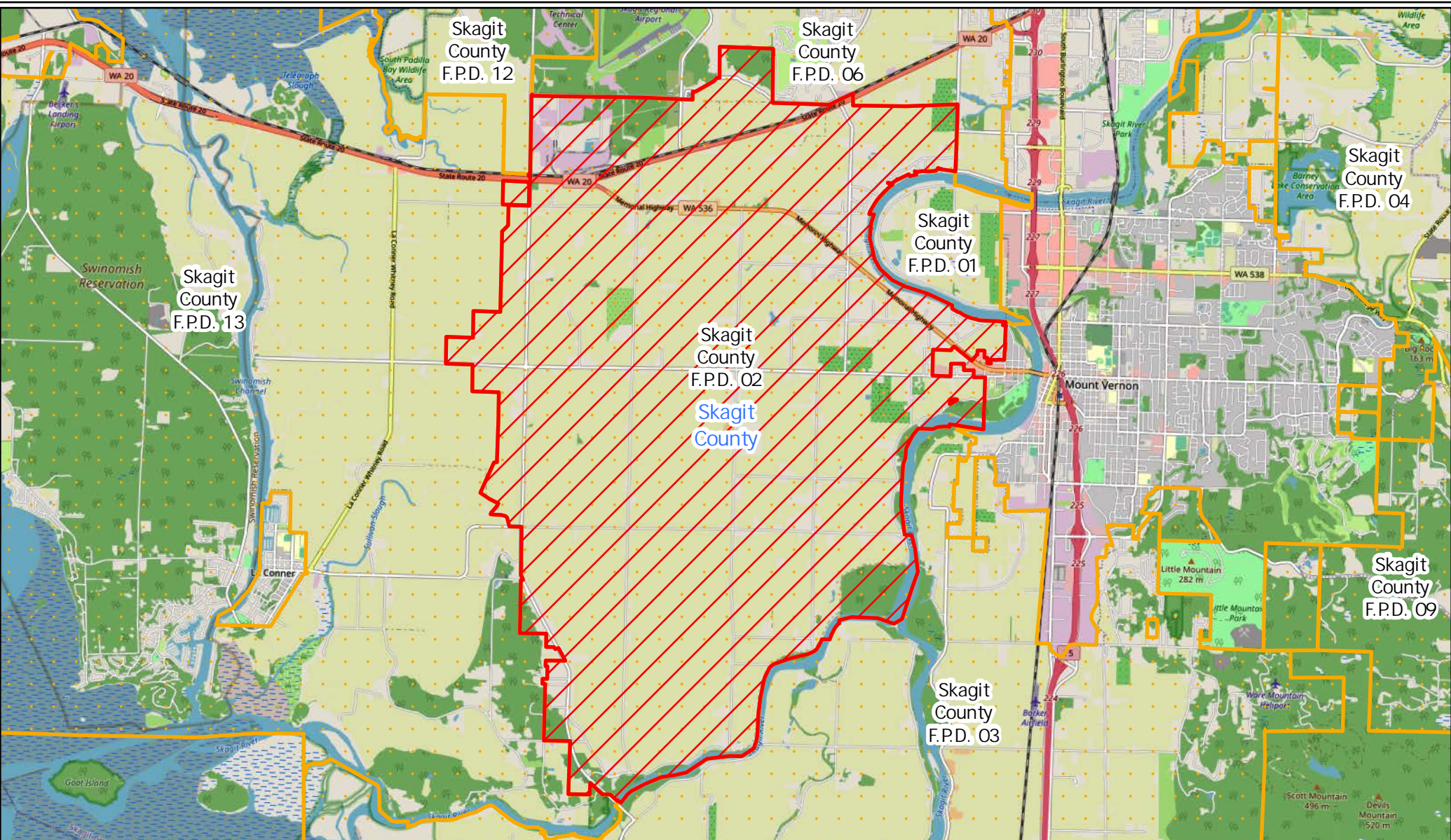


Washington State
Office of Financial Management
Forecasting & Research Division

Disclaimer: By using these data, the user agrees that neither the Office of Financial Management nor the Washington Surveying and Rating Bureau shall be liable for any activity involving these data with regard to lost profits or savings or any other consequential damages; or the fitness for use of the data for a particular purpose; or the installation of the data, its use, or the results obtained.

Data source: Fire Protection Districts and City Limits [Shapefile], Washington Surveying and Rating Bureau, October 1, 2023.

Map prepared by OFM on October 1, 2023.



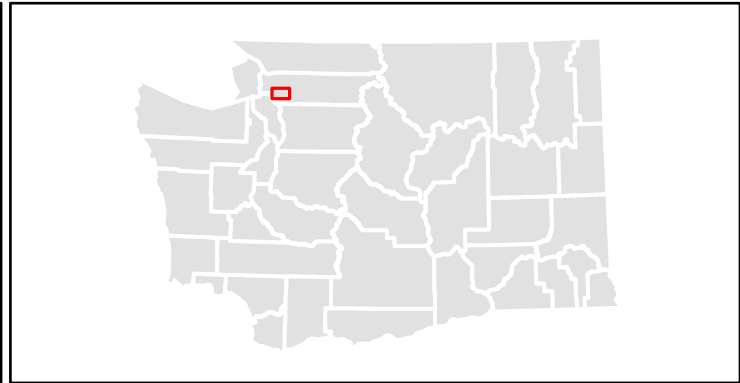
(Unincorporated Portion Only)

County

Fire Protection District

Selected Fire Protection District

N 0 0.4 0.8 1.6 Miles



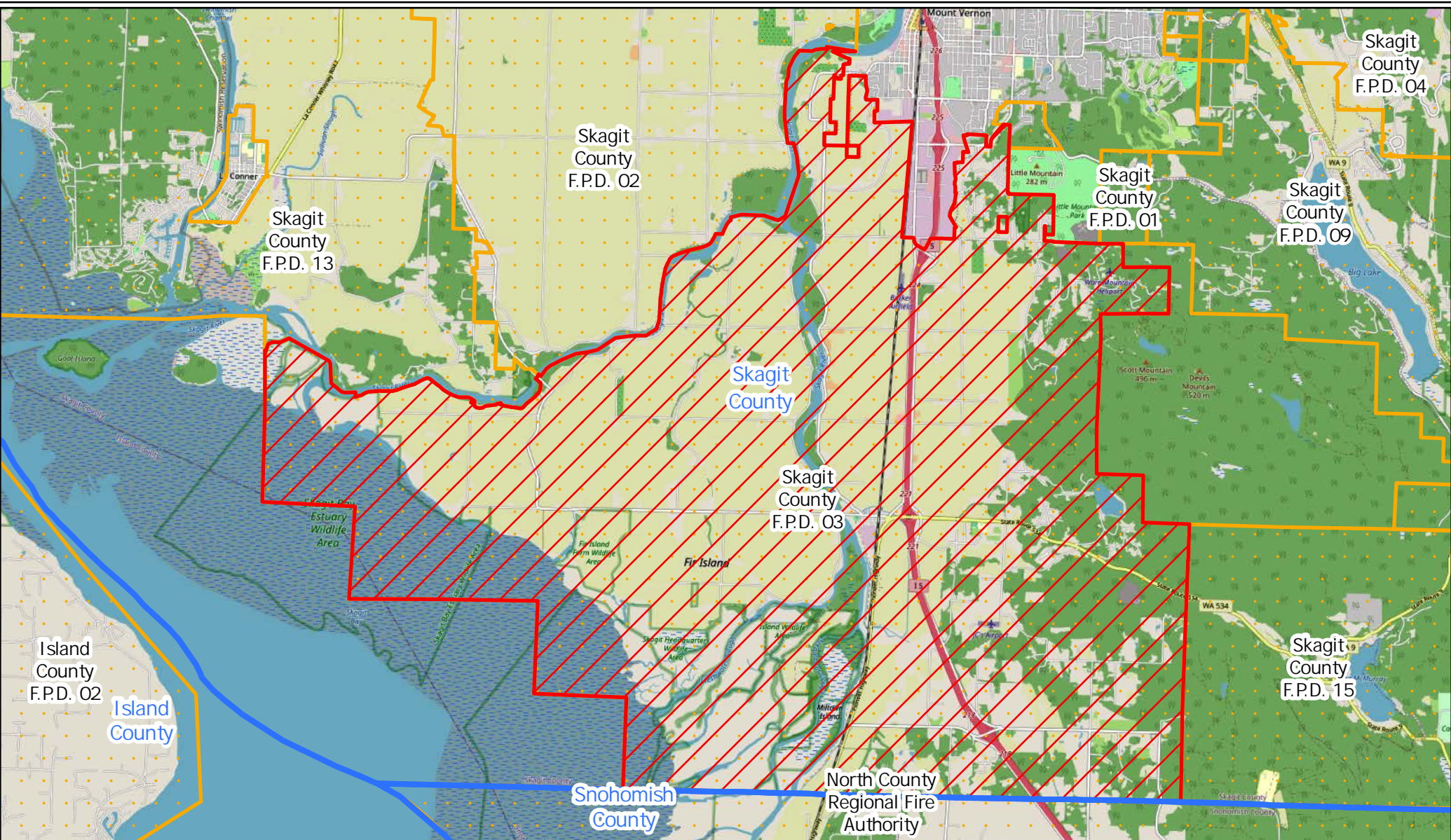


Washington State
Office of Financial Management
Forecasting & Research Division

Disclaimer: By using these data, the user agrees that neither the Office of Financial Management nor the Washington Surveying and Rating Bureau shall be liable for any activity involving these data with regard to lost profits or savings or any other consequential damages; or the fitness for use of the data for a particular purpose; or the installation of the data, its use, or the results obtained.

Data source: Fire Protection Districts and City Limits [Shapefile], Washington Surveying and Rating Bureau, October 1, 2023.

Map prepared by OFM on October 1, 2023.



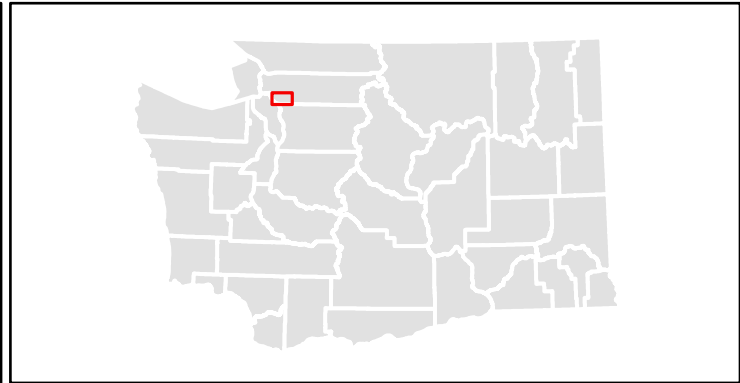
(Unincorporated Portion Only)

County

Fire Protection District

Selected Fire Protection District

N 0 0.45 0.9 1.8 Miles



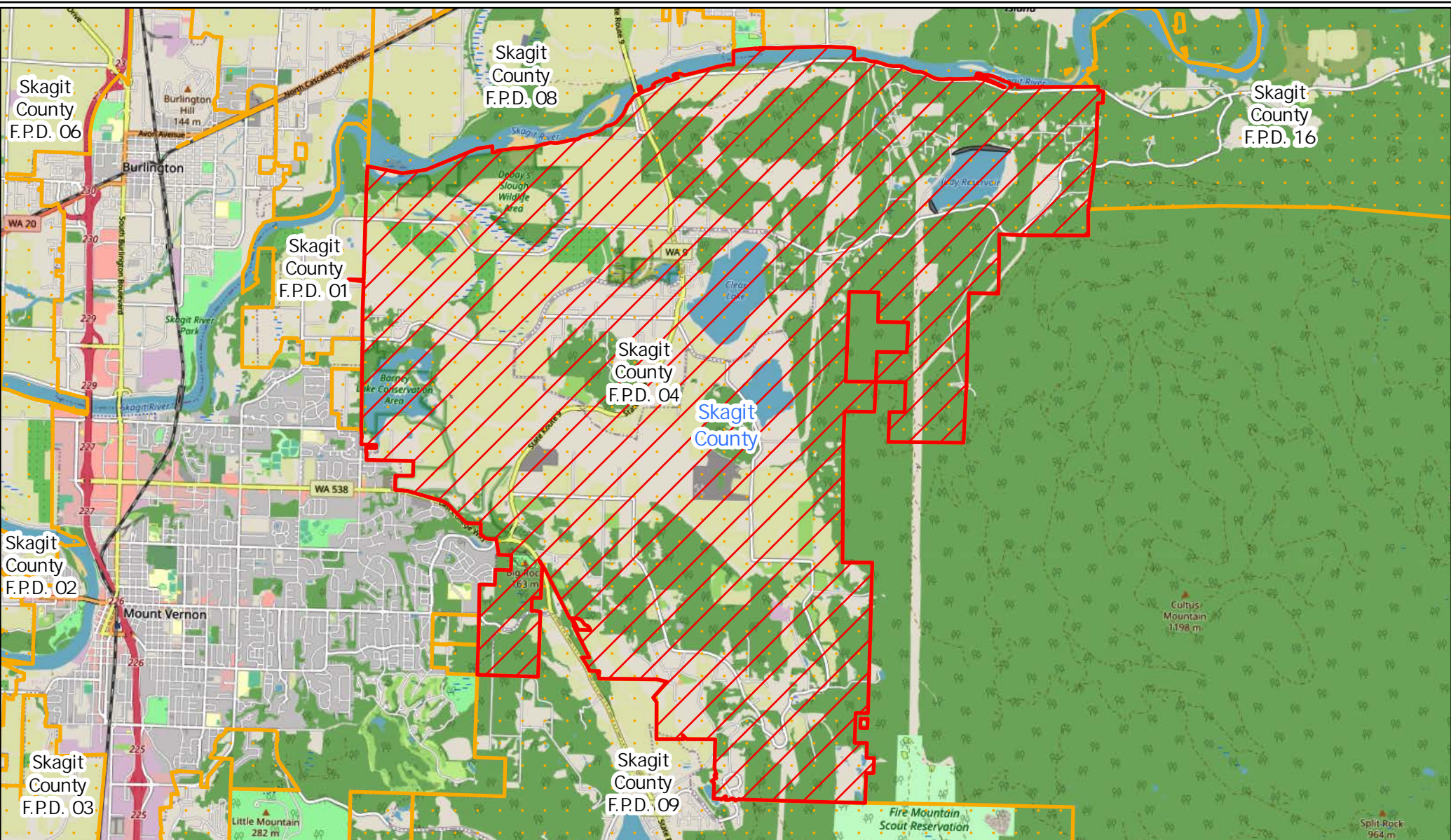


Washington State
Office of Financial Management
Forecasting & Research Division

Disclaimer: By using these data, the user agrees that neither the Office of Financial Management nor the Washington Surveying and Rating Bureau shall be liable for any activity involving these data with regard to lost profits or savings or any other consequential damages; or the fitness for use of the data for a particular purpose; or the installation of the data, its use, or the results obtained.

Data source: Fire Protection Districts and City Limits [Shapefile], Washington Surveying and Rating Bureau, October 1, 2023.

Map prepared by OFM on October 1, 2023.



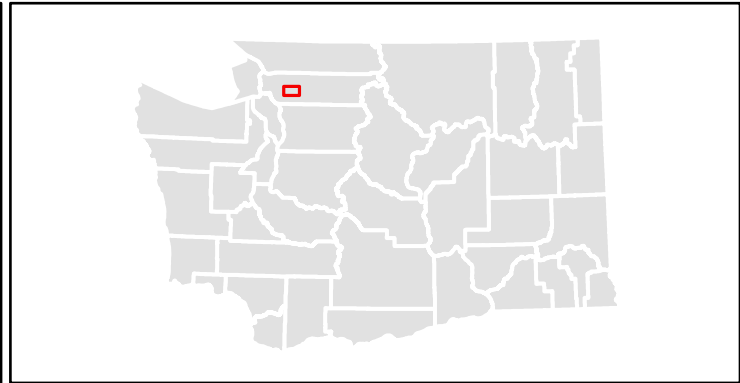
(Unincorporated Portion Only)

County

Fire Protection District

Selected Fire Protection District

N 0 0.35 0.7 1.4 Miles



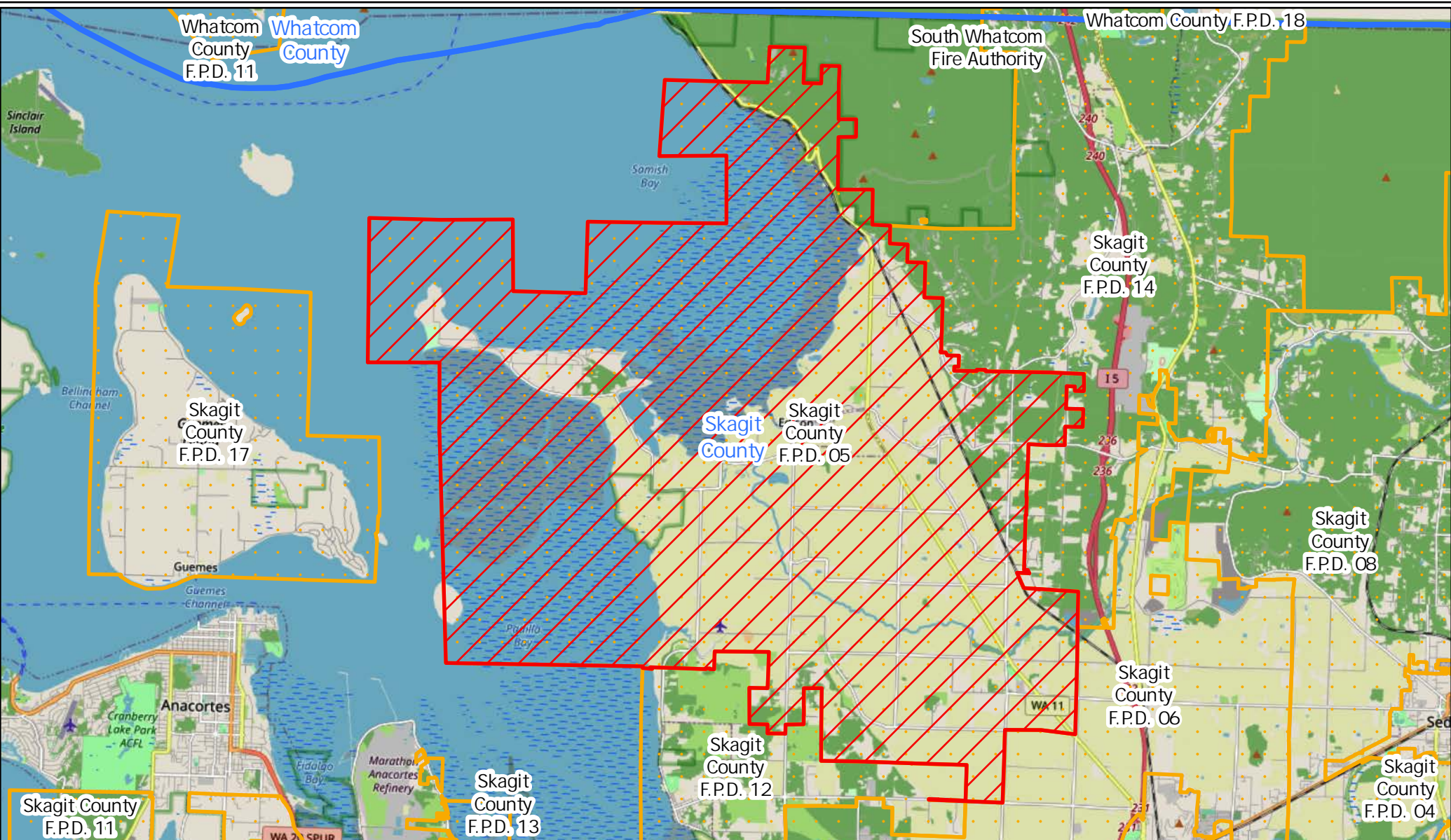


Washington State
Office of Financial Management
Forecasting & Research Division


Disclaimer: By using these data, the user agrees that neither the Office of Financial Management nor the Washington Surveying and Rating Bureau shall be liable for any activity involving these data with regard to lost profits or savings or any other consequential damages; or the fitness for use of the data for a particular purpose; or the installation of the data, its use, or the results obtained.


Data source: Fire Protection Districts and City Limits [Shapefile], Washington Surveying and Rating Bureau, October 1, 2023.


Map prepared by OFM on October 1, 2023.



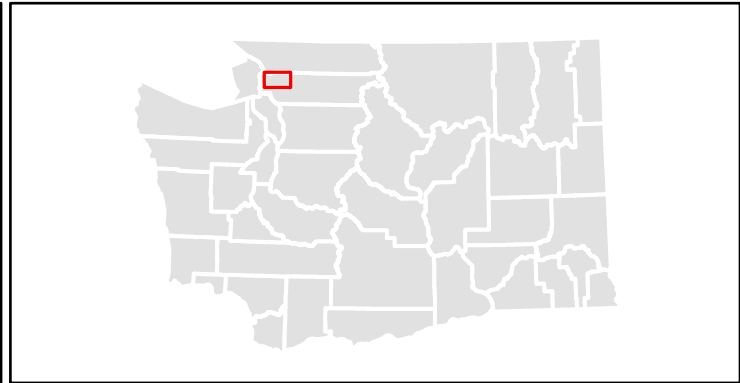
(Unincorporated Portion Only)

 County

 Fire Protection District

 Selected Fire Protection District

N 0 0.5 1 2 Miles



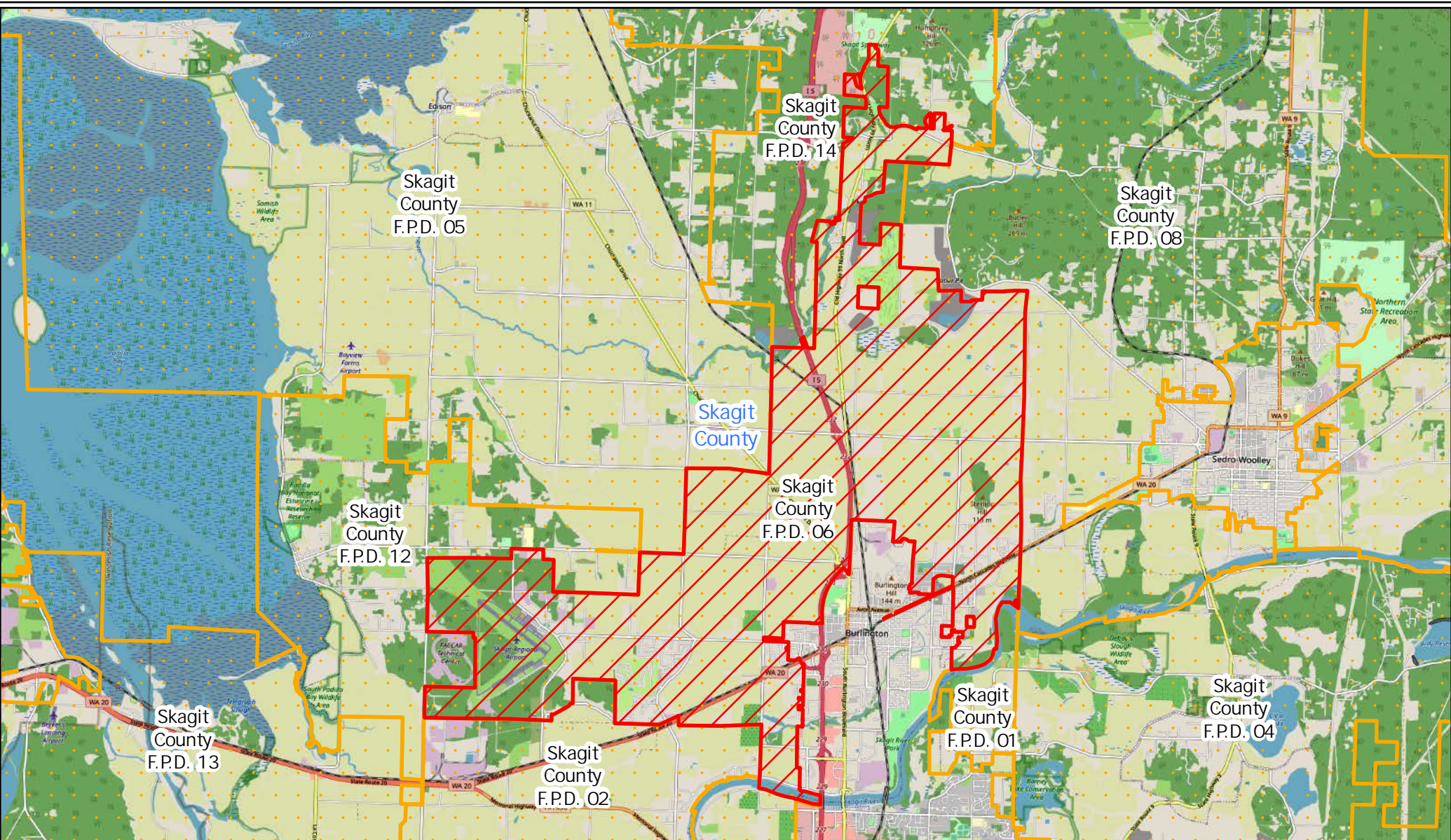


Washington State
Office of Financial Management
Forecasting & Research Division


Disclaimer: By using these data, the user agrees that neither the Office of Financial Management nor the Washington Surveying and Rating Bureau shall be liable for any activity involving these data with regard to lost profits or savings or any other consequential damages; or the fitness for use of the data for a particular purpose; or the installation of the data, its use, or the results obtained.


Data source: Fire Protection Districts and City Limits [Shapefile], Washington Surveying and Rating Bureau, October 1, 2023.


Map prepared by OFM on October 1, 2023.



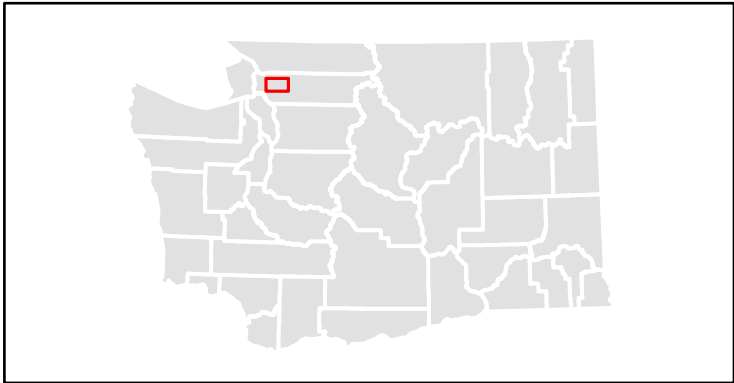
(Unincorporated Portion Only)

 County

 Fire Protection District

 Selected Fire Protection District

N 0 0.5 1 2 Miles



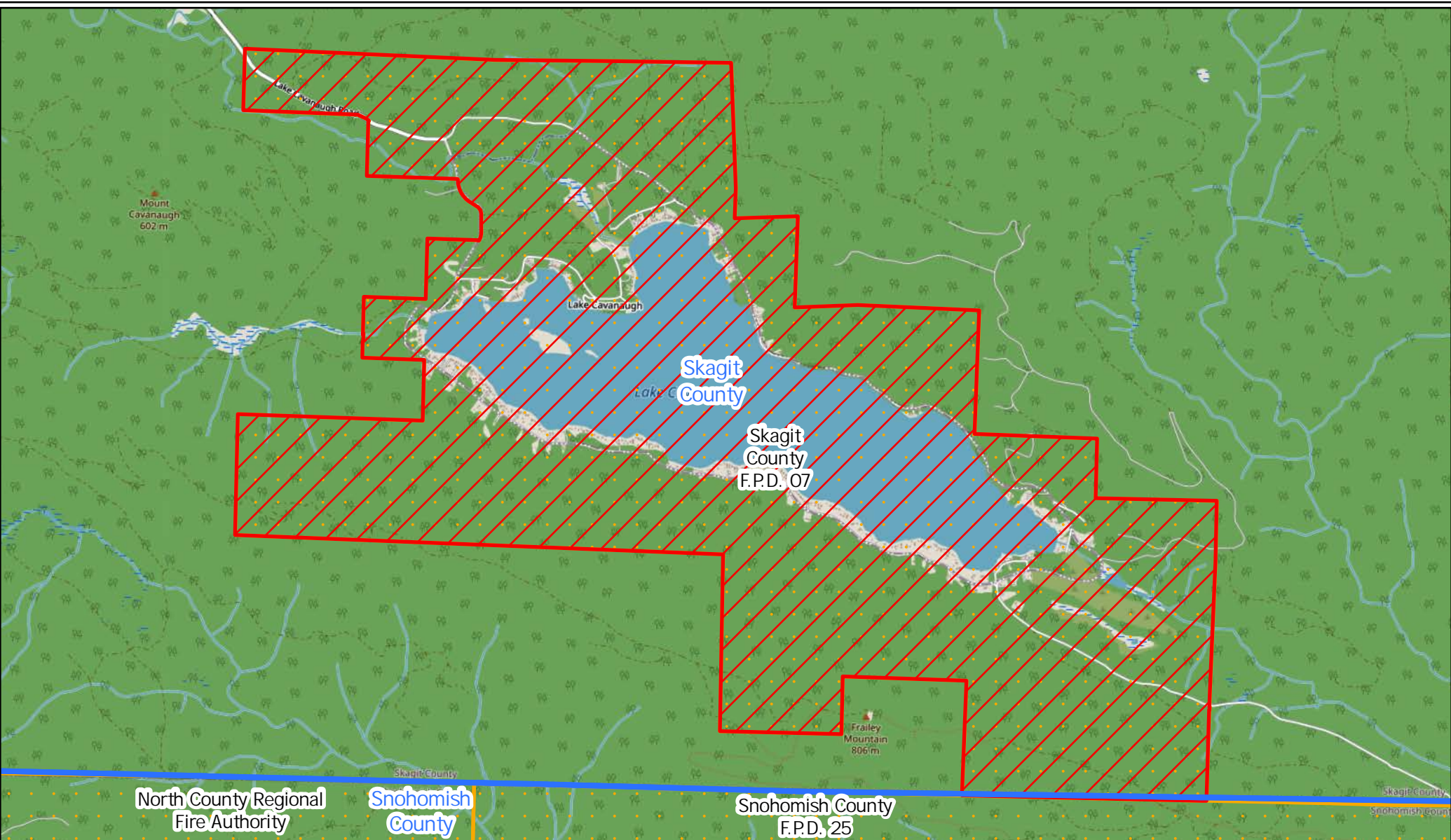


Washington State
Office of Financial Management
Forecasting & Research Division

Disclaimer: By using these data, the user agrees that neither the Office of Financial Management nor the Washington Surveying and Rating Bureau shall be liable for any activity involving these data with regard to lost profits or savings or any other consequential damages; or the fitness for use of the data for a particular purpose; or the installation of the data, its use, or the results obtained.

Data source: Fire Protection Districts and City Limits [Shapefile], Washington Surveying and Rating Bureau, October 1, 2023.

Map prepared by OFM on October 1, 2023.



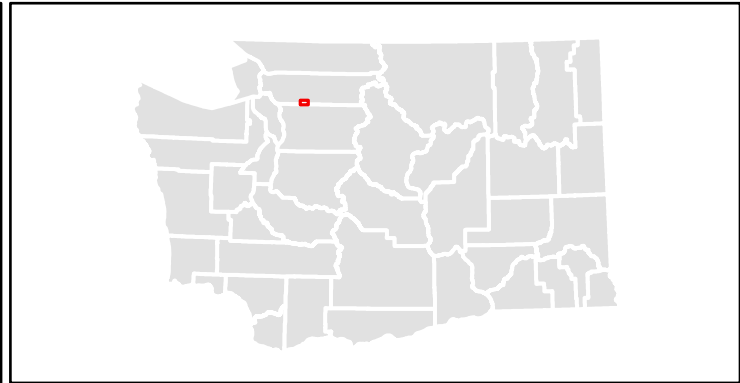
(Unincorporated Portion Only)

County

Fire Protection District

Selected Fire Protection District

N 0 0.17 0.35 0.7 Miles



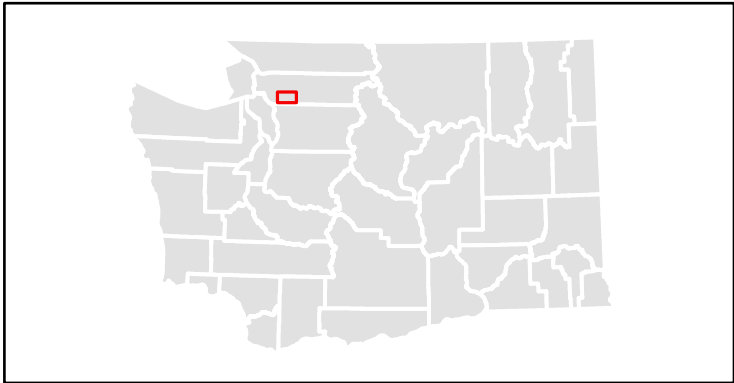
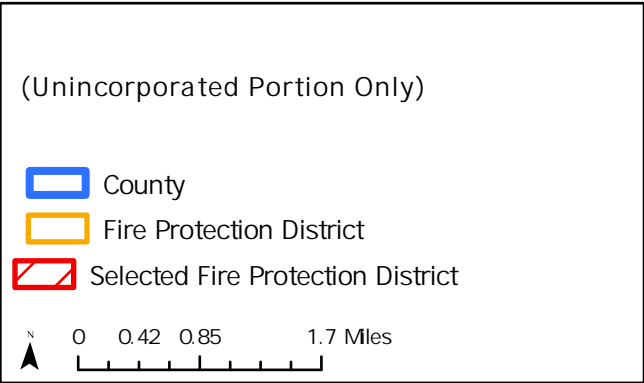
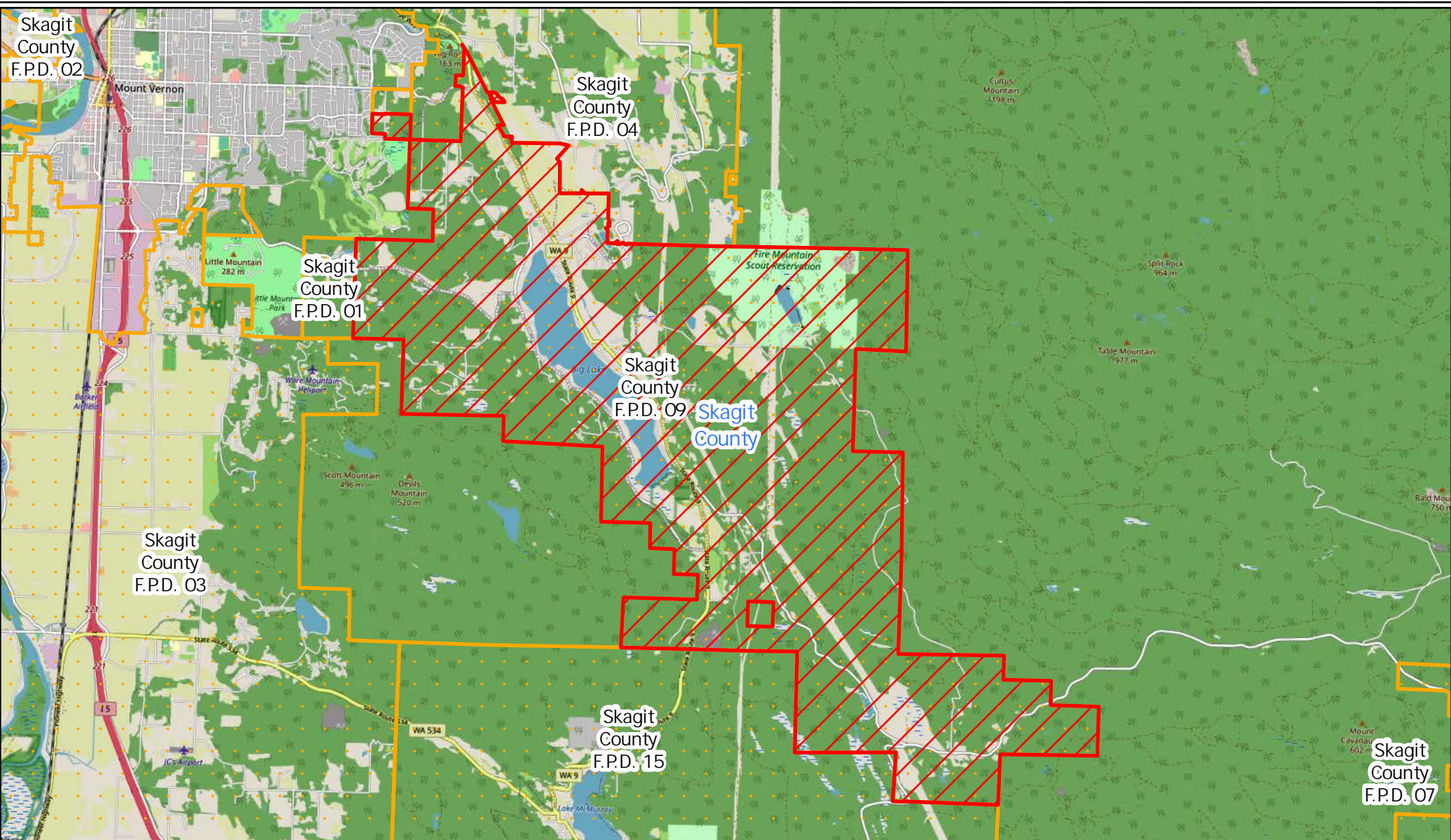


Washington State
Office of Financial Management
Forecasting & Research Division

Disclaimer: By using these data, the user agrees that neither the Office of Financial Management nor the Washington Surveying and Rating Bureau shall be liable for any activity involving these data with regard to lost profits or savings or any other consequential damages; or the fitness for use of the data for a particular purpose; or the installation of the data, its use, or the results obtained.

Data source: Fire Protection Districts and City Limits [Shapefile], Washington Surveying and Rating Bureau, October 1, 2023.

Map prepared by OFM on October 1, 2023.



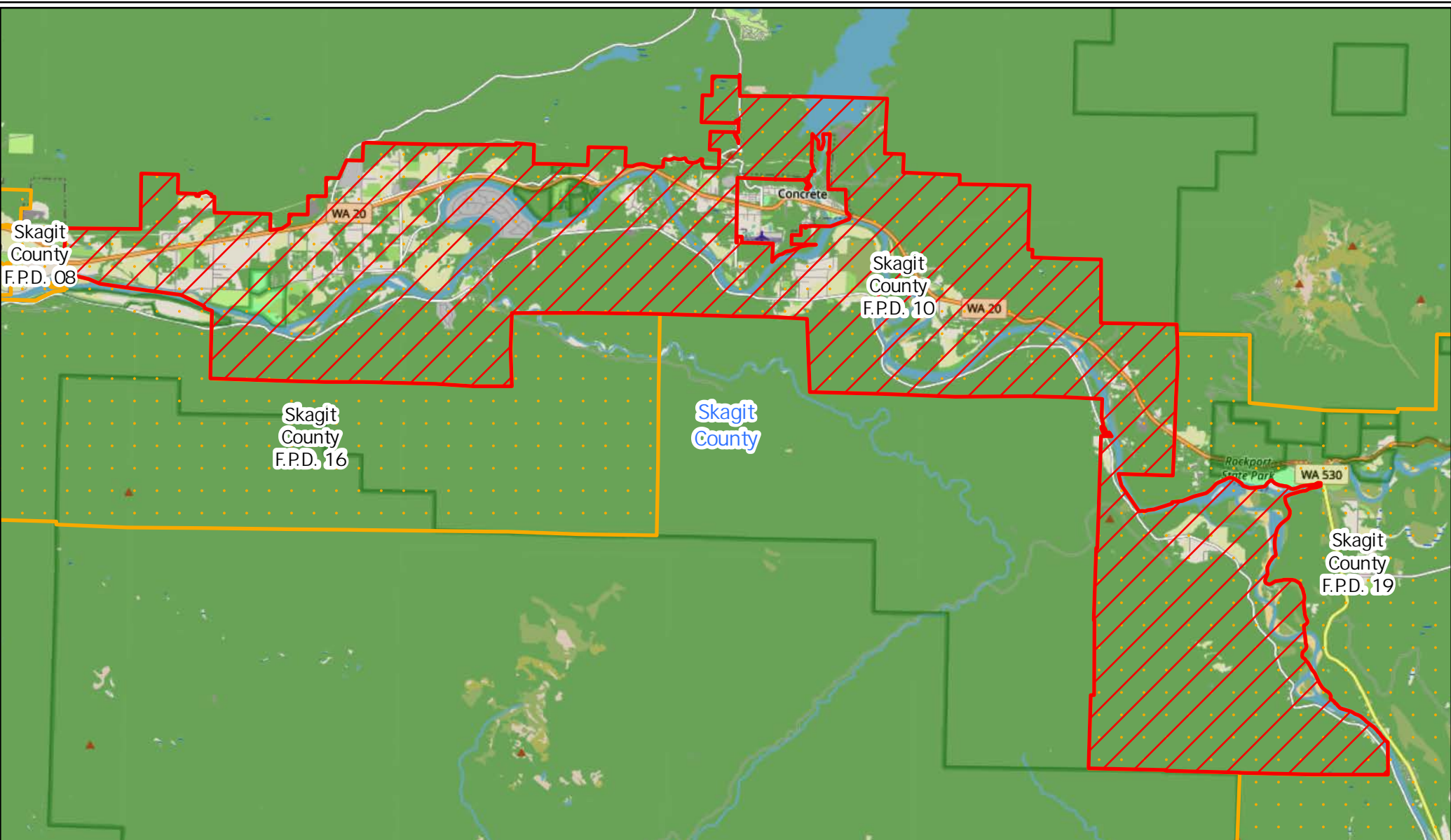


Washington State
Office of Financial Management
Forecasting & Research Division


Disclaimer: By using these data, the user agrees that neither the Office of Financial Management nor the Washington Surveying and Rating Bureau shall be liable for any activity involving these data with regard to lost profits or savings or any other consequential damages; or the fitness for use of the data for a particular purpose; or the installation of the data, its use, or the results obtained.


Data source: Fire Protection Districts and City Limits [Shapefile], Washington Surveying and Rating Bureau, October 1, 2023.


Map prepared by OFM on October 1, 2023.



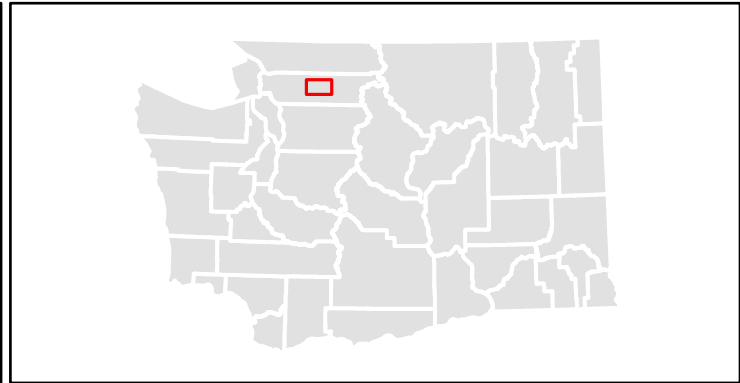
(Unincorporated Portion Only)

 County

 Fire Protection District

 Selected Fire Protection District

N 0 0.5 1 2 Miles



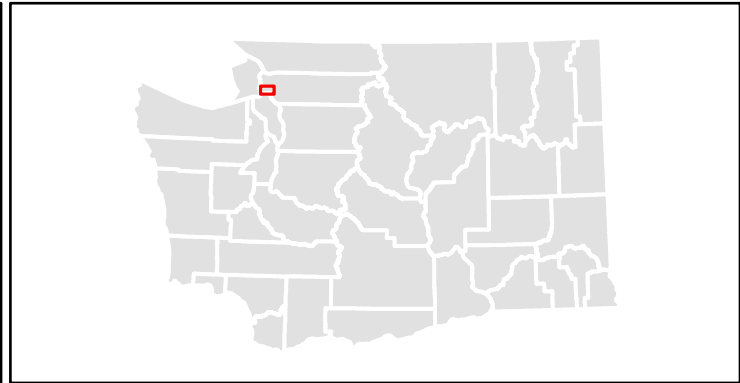
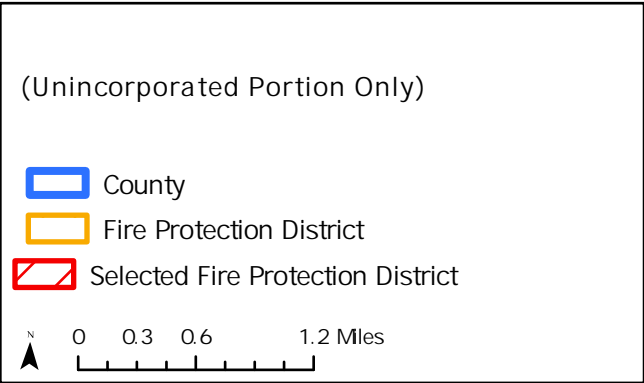
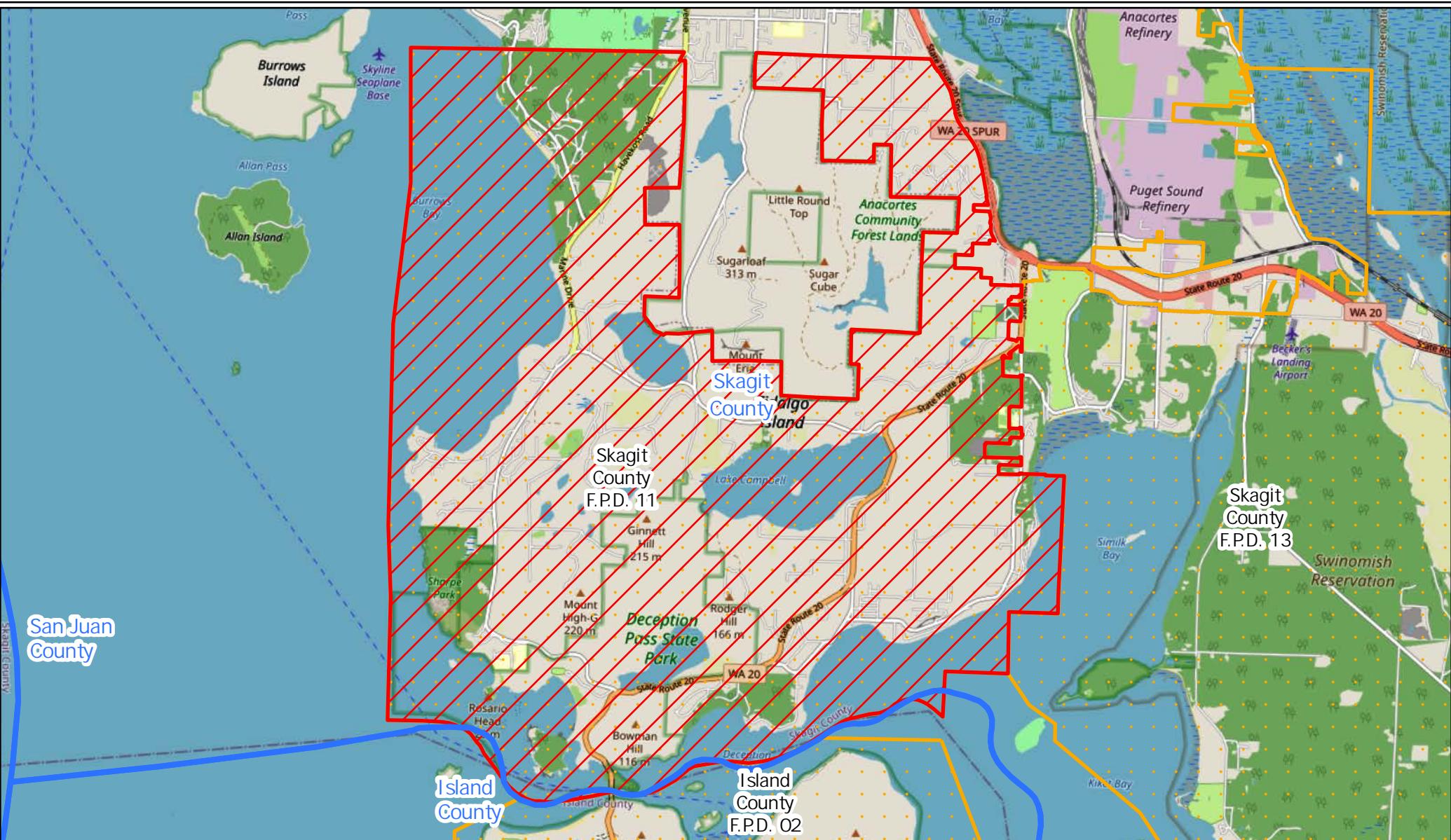


Washington State
Office of Financial Management
Forecasting & Research Division

Disclaimer: By using these data, the user agrees that neither the Office of Financial Management nor the Washington Surveying and Rating Bureau shall be liable for any activity involving these data with regard to lost profits or savings or any other consequential damages; or the fitness for use of the data for a particular purpose; or the installation of the data, its use, or the results obtained.

Data source: Fire Protection Districts and City Limits [Shapefile], Washington Surveying and Rating Bureau, October 1, 2023.

Map prepared by OFM on October 1, 2023.



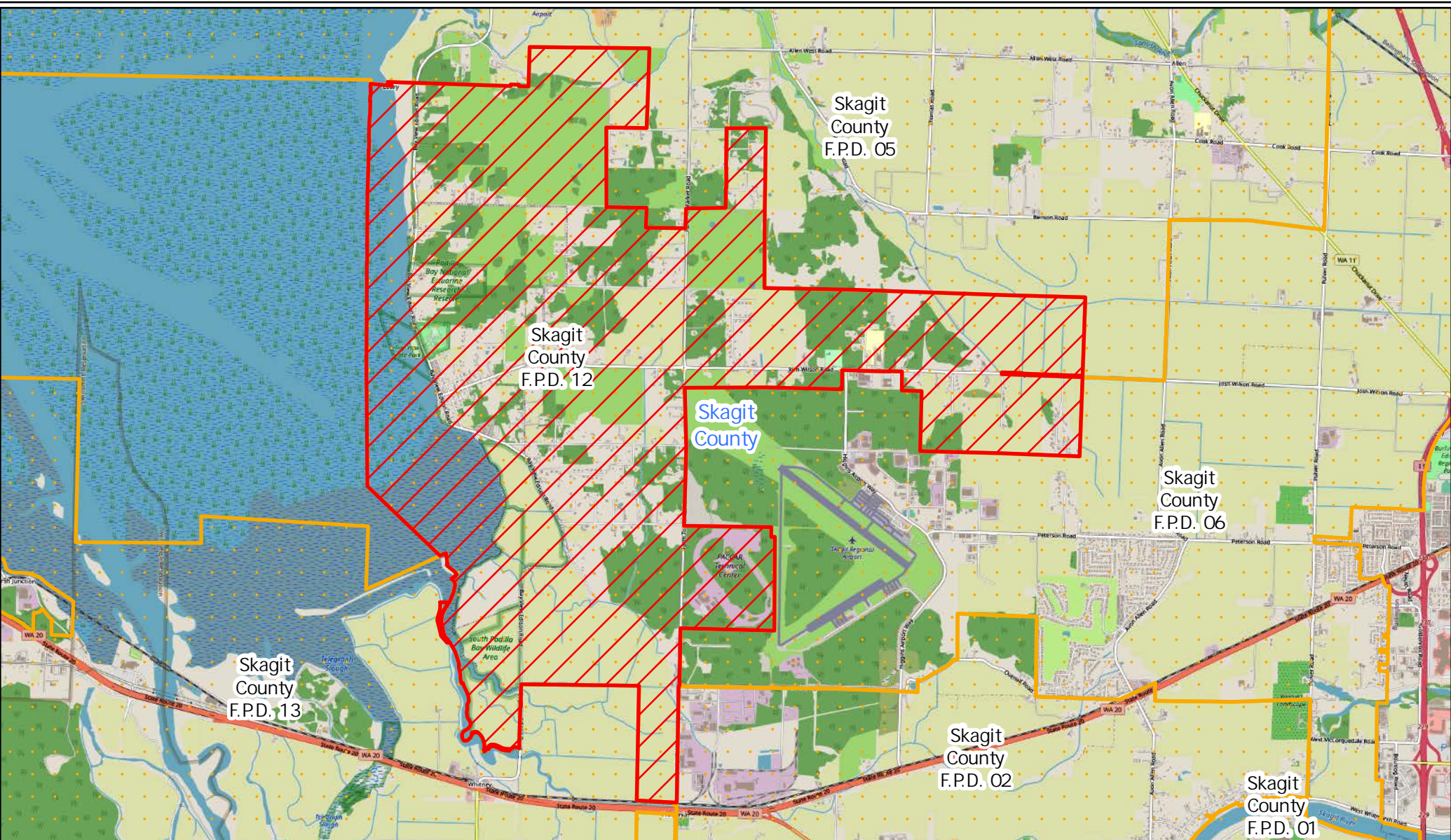


Washington State
Office of Financial Management
Forecasting & Research Division

Disclaimer: By using these data, the user agrees that neither the Office of Financial Management nor the Washington Surveying and Rating Bureau shall be liable for any activity involving these data with regard to lost profits or savings or any other consequential damages; or the fitness for use of the data for a particular purpose; or the installation of the data, its use, or the results obtained.

Data source: Fire Protection Districts and City Limits [Shapefile], Washington Surveying and Rating Bureau, October 1, 2023.

Map prepared by OFM on October 1, 2023.



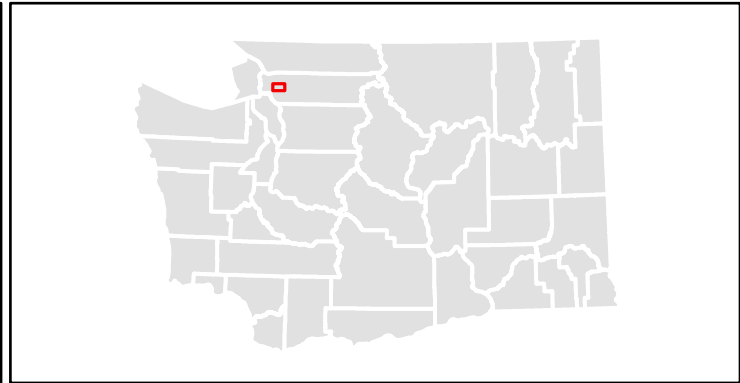
(Unincorporated Portion Only)

County

Fire Protection District

Selected Fire Protection District

0 0.25 0.5 1 Miles

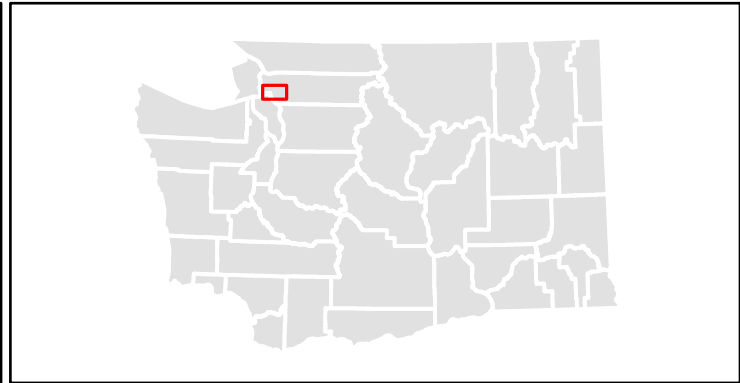
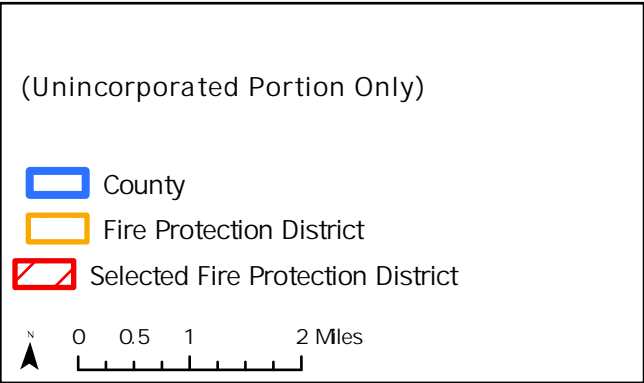
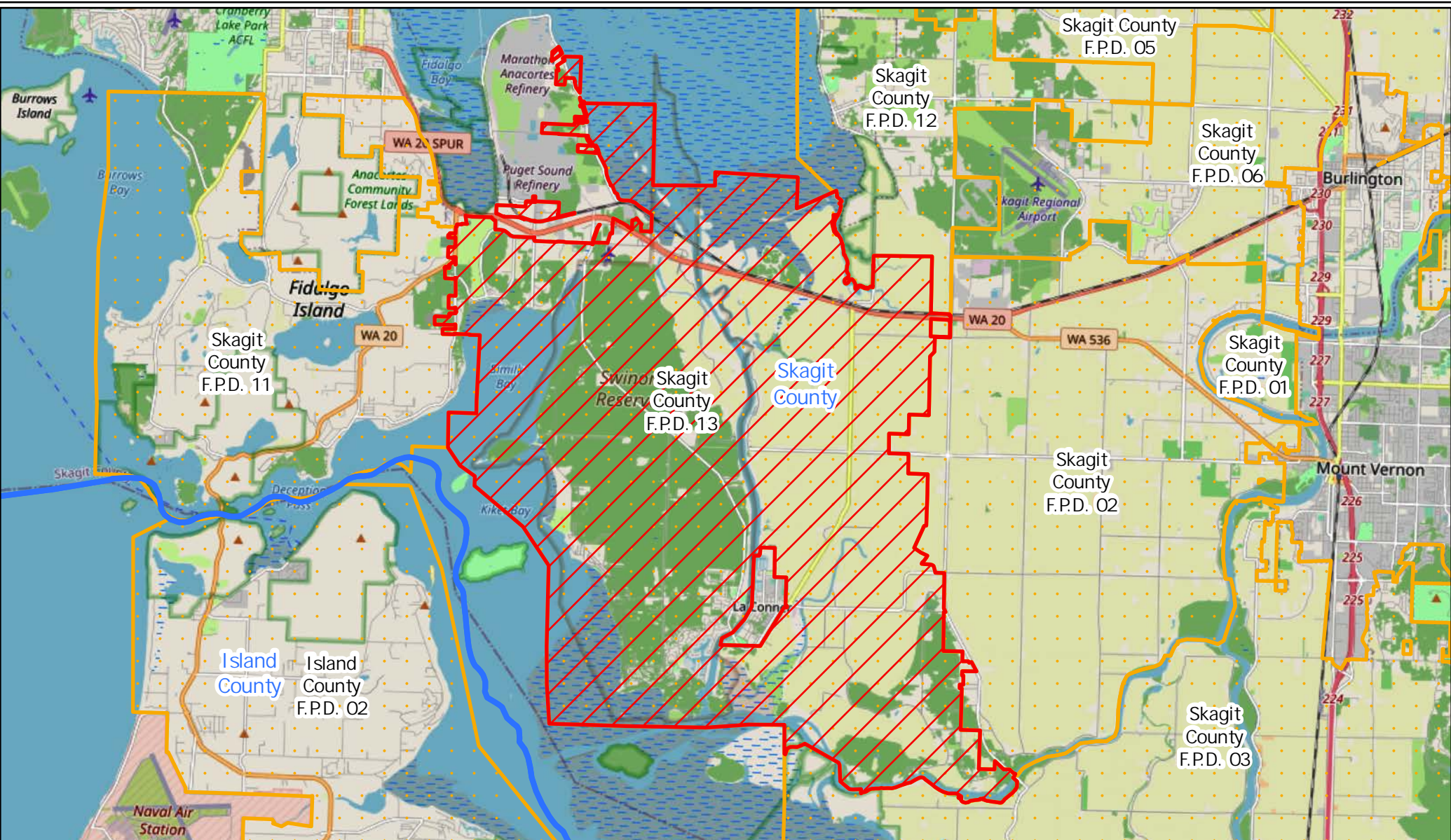


Washington State
Office of Financial Management
Forecasting & Research Division

Disclaimer: By using these data, the user agrees that neither the Office of Financial Management nor the Washington Surveying and Rating Bureau shall be liable for any activity involving these data with regard to lost profits or savings or any other consequential damages; or the fitness for use of the data for a particular purpose; or the installation of the data, its use, or the results obtained.

Data source: Fire Protection Districts and City Limits [Shapefile], Washington Surveying and Rating Bureau, October 1, 2023.

Map prepared by OFM on October 1, 2023.



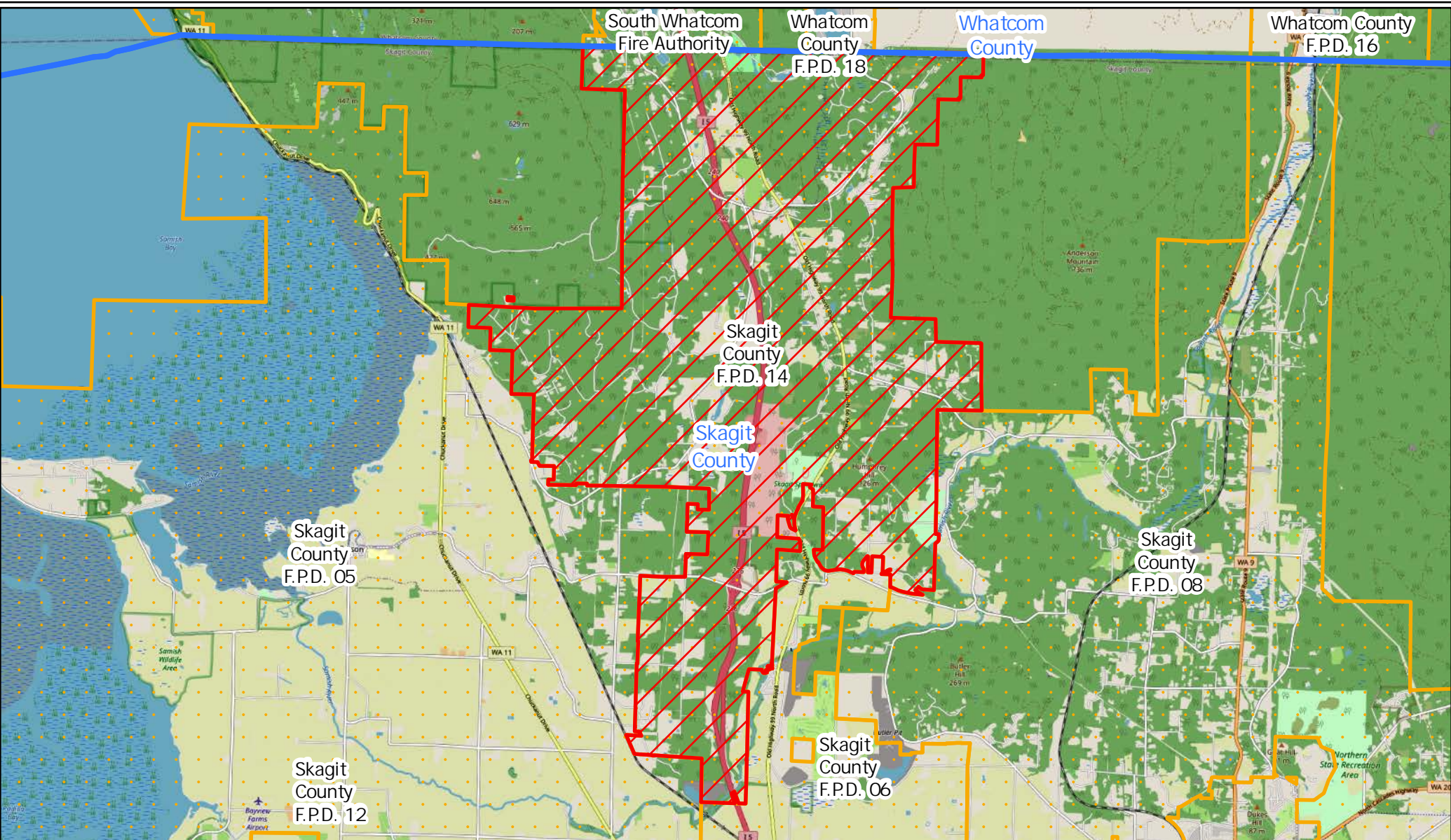


Washington State
Office of Financial Management
Forecasting & Research Division

Disclaimer: By using these data, the user agrees that neither the Office of Financial Management nor the Washington Surveying and Rating Bureau shall be liable for any activity involving these data with regard to lost profits or savings or any other consequential damages; or the fitness for use of the data for a particular purpose; or the installation of the data, its use, or the results obtained.

Data source: Fire Protection Districts and City Limits [Shapefile], Washington Surveying and Rating Bureau, October 1, 2023.

Map prepared by OFM on October 1, 2023.



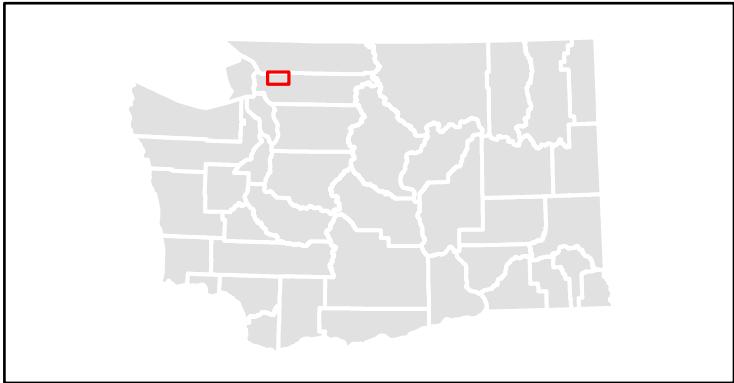
(Unincorporated Portion Only)

County

Fire Protection District

Selected Fire Protection District

N 0 0.5 1 2 Miles



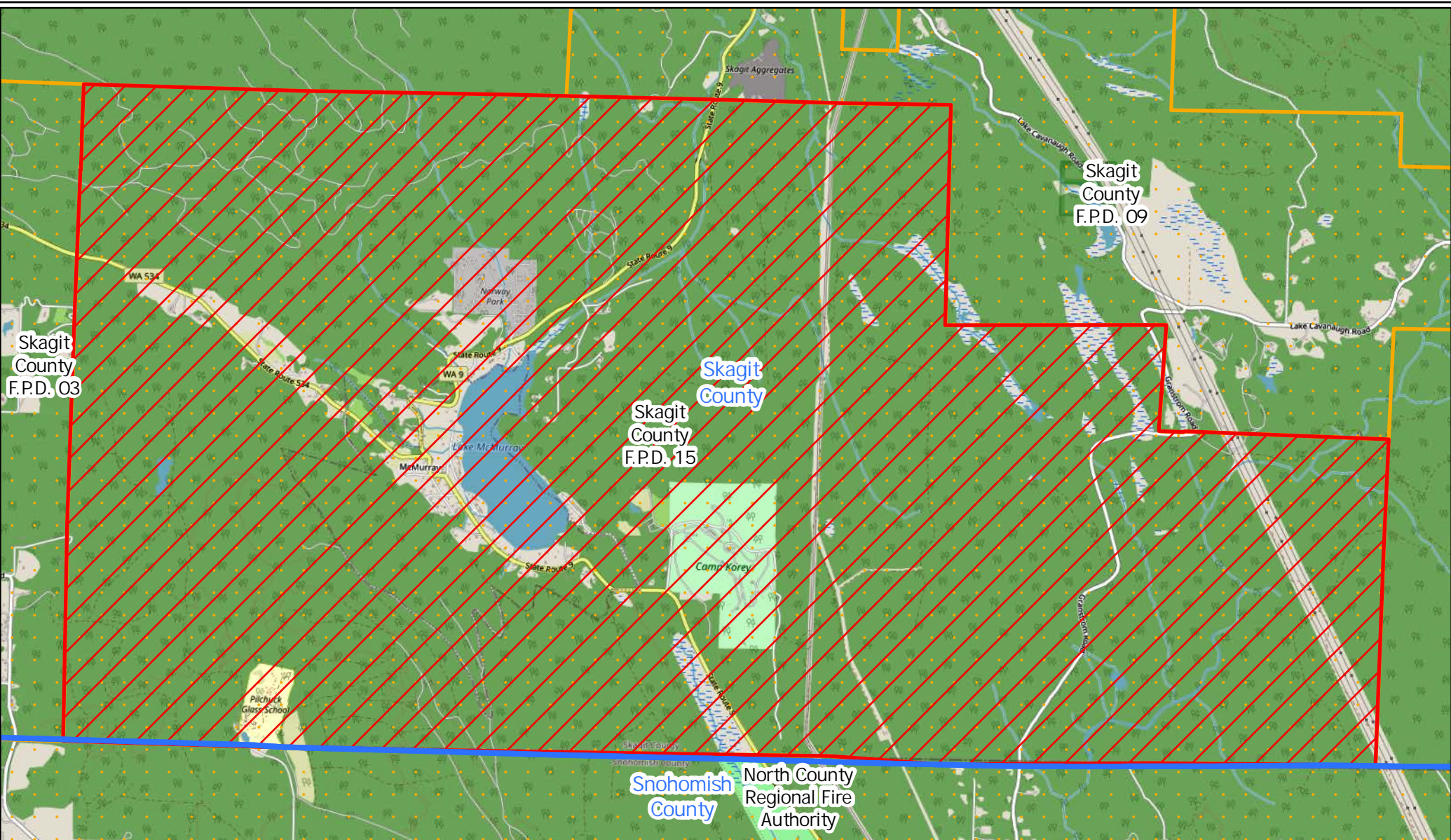


Washington State
Office of Financial Management
Forecasting & Research Division

Disclaimer: By using these data, the user agrees that neither the Office of Financial Management nor the Washington Surveying and Rating Bureau shall be liable for any activity involving these data with regard to lost profits or savings or any other consequential damages; or the fitness for use of the data for a particular purpose; or the installation of the data, its use, or the results obtained.

Data source: Fire Protection Districts and City Limits [Shapefile], Washington Surveying and Rating Bureau, October 1, 2023.

Map prepared by OFM on October 1, 2023.



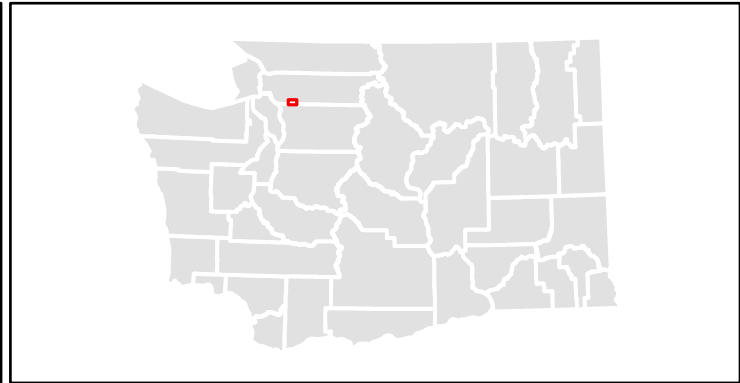
(Unincorporated Portion Only)

County

Fire Protection District

Selected Fire Protection District

N 0 0.17 0.35 0.7 Miles



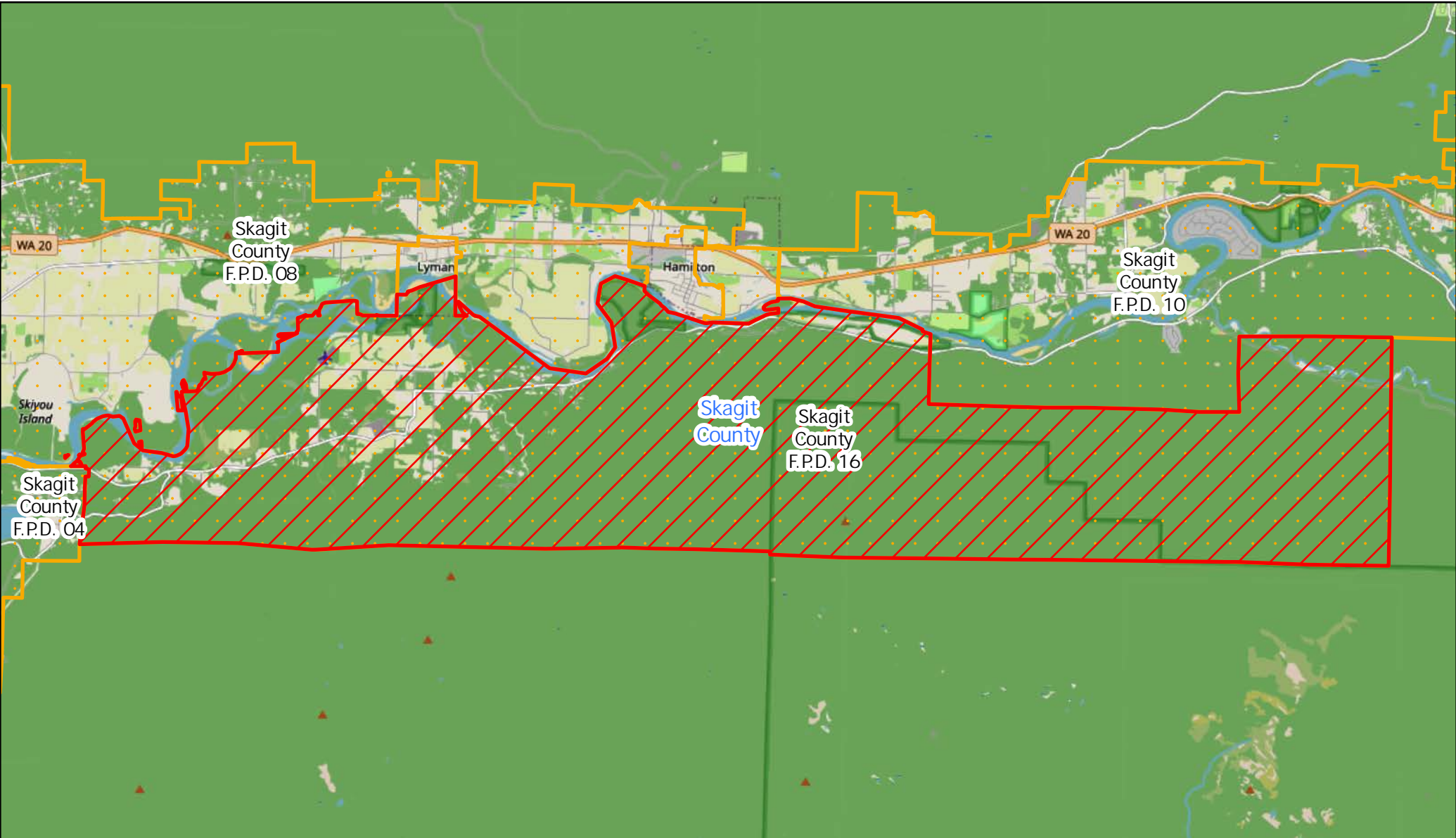


Washington State
Office of Financial Management
Forecasting & Research Division


Disclaimer: By using these data, the user agrees that neither the Office of Financial Management nor the Washington Surveying and Rating Bureau shall be liable for any activity involving these data with regard to lost profits or savings or any other consequential damages; or the fitness for use of the data for a particular purpose; or the installation of the data, its use, or the results obtained.


Data source: Fire Protection Districts and City Limits [Shapefile], Washington Surveying and Rating Bureau, October 1, 2023.


Map prepared by OFM on October 1, 2023.



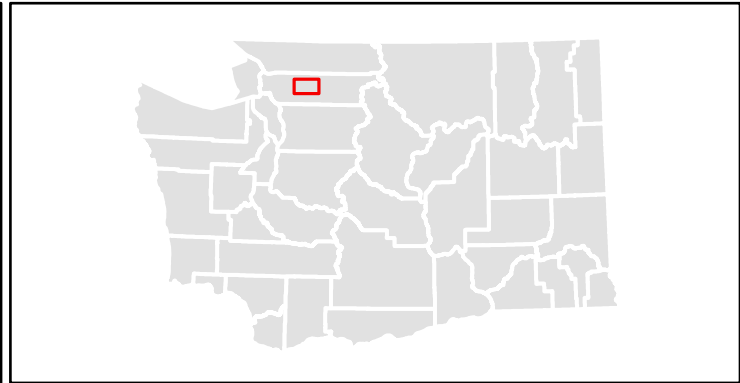
(Unincorporated Portion Only)

 County

 Fire Protection District

 Selected Fire Protection District

N 0 0.5 1 2 Miles



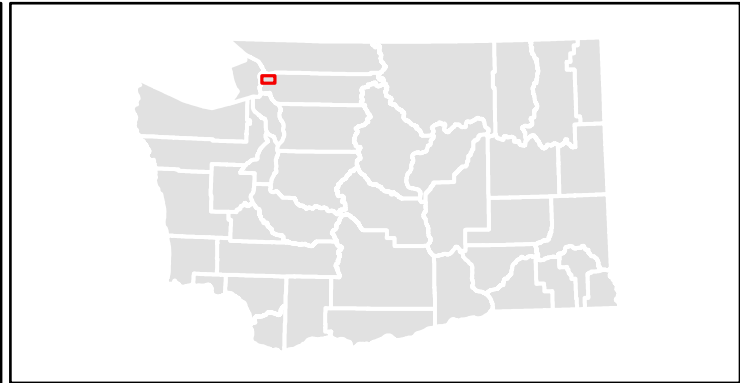
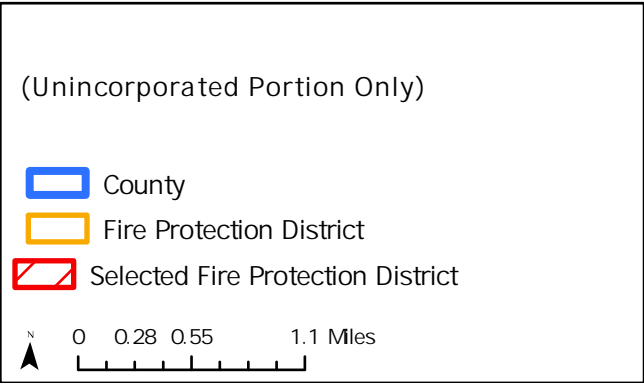
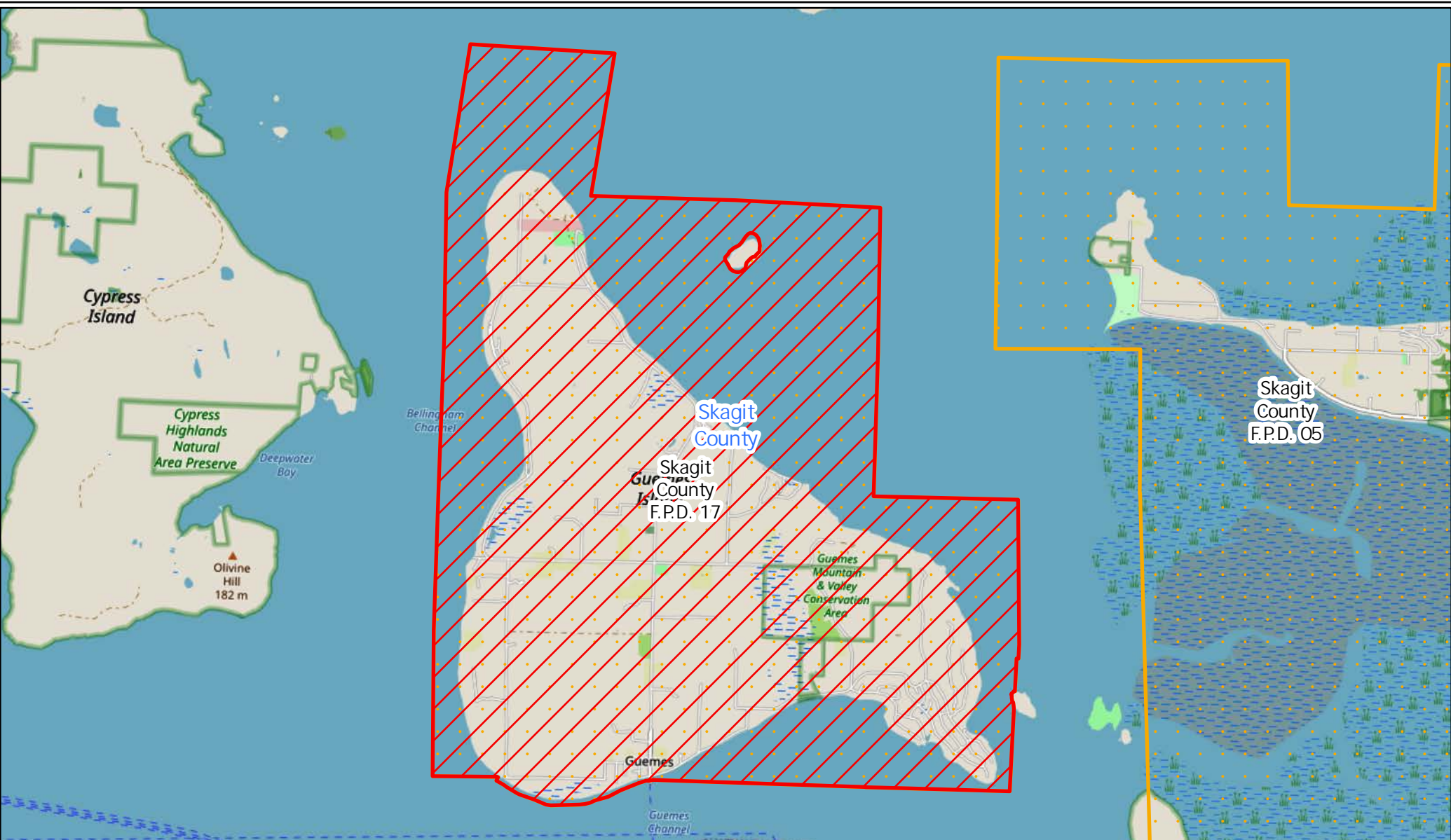


Washington State
Office of Financial Management
Forecasting & Research Division

Disclaimer: By using these data, the user agrees that neither the Office of Financial Management nor the Washington Surveying and Rating Bureau shall be liable for any activity involving these data with regard to lost profits or savings or any other consequential damages; or the fitness for use of the data for a particular purpose; or the installation of the data, its use, or the results obtained.

Data source: Fire Protection Districts and City Limits [Shapefile], Washington Surveying and Rating Bureau, October 1, 2023.

Map prepared by OFM on October 1, 2023.



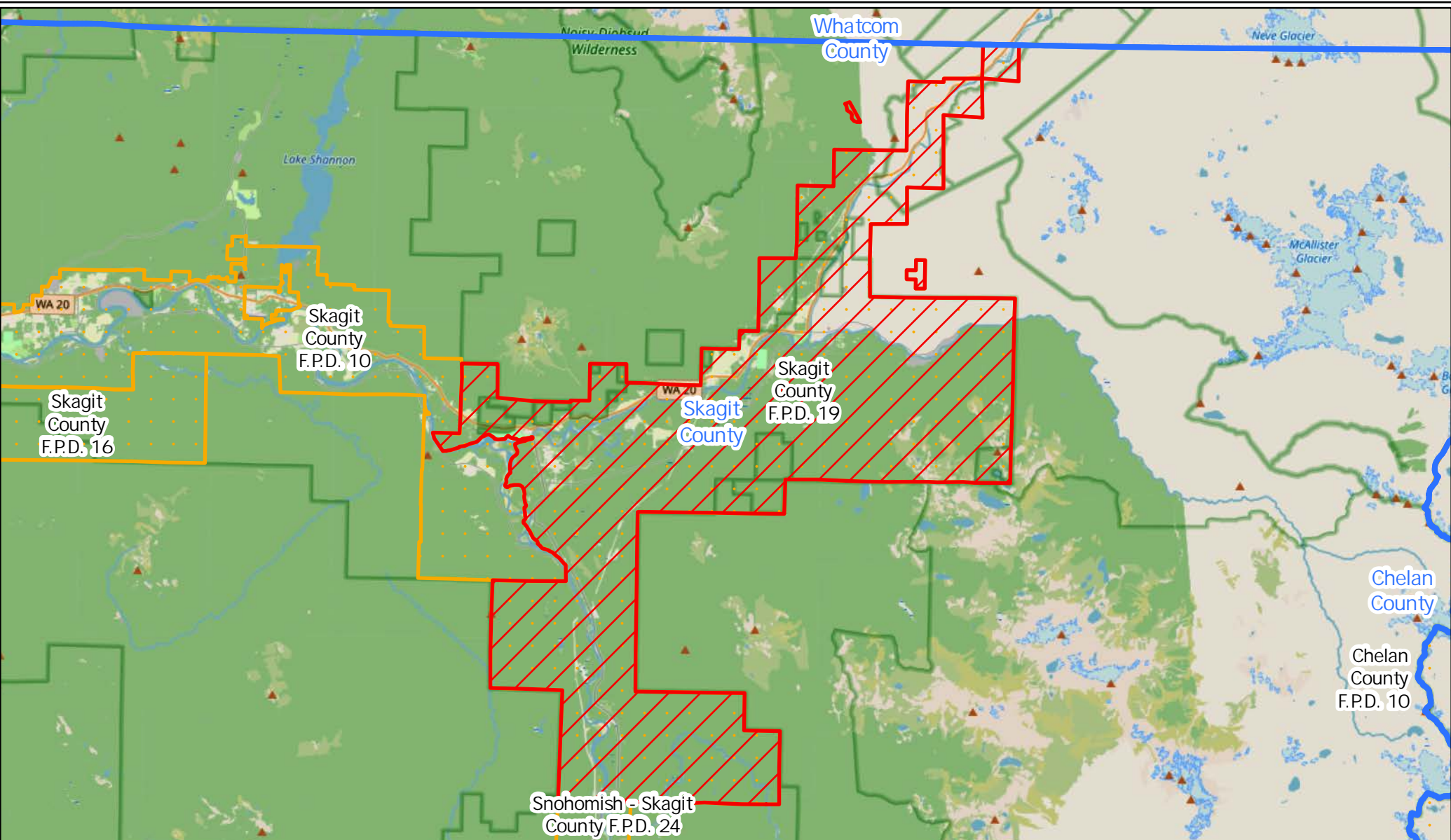


Washington State
Office of Financial Management
Forecasting & Research Division


Disclaimer: By using these data, the user agrees that neither the Office of Financial Management nor the Washington Surveying and Rating Bureau shall be liable for any activity involving these data with regard to lost profits or savings or any other consequential damages; or the fitness for use of the data for a particular purpose; or the installation of the data, its use, or the results obtained.


Data source: Fire Protection Districts and City Limits [Shapefile], Washington Surveying and Rating Bureau, October 1, 2023.


Map prepared by OFM on October 1, 2023.




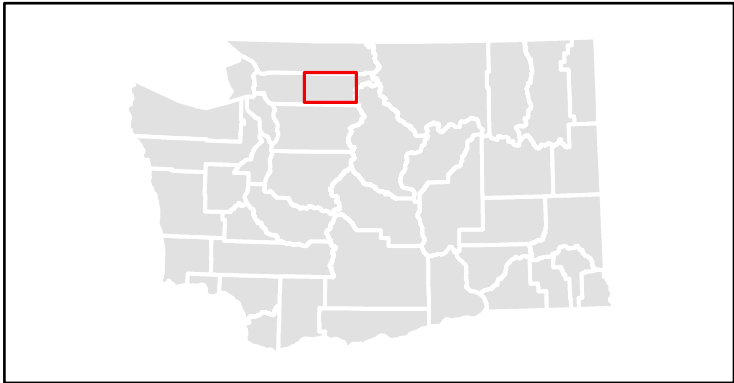
(Unincorporated Portion Only)

 County

 Fire Protection District

 Selected Fire Protection District

 0 1 2 4 Miles



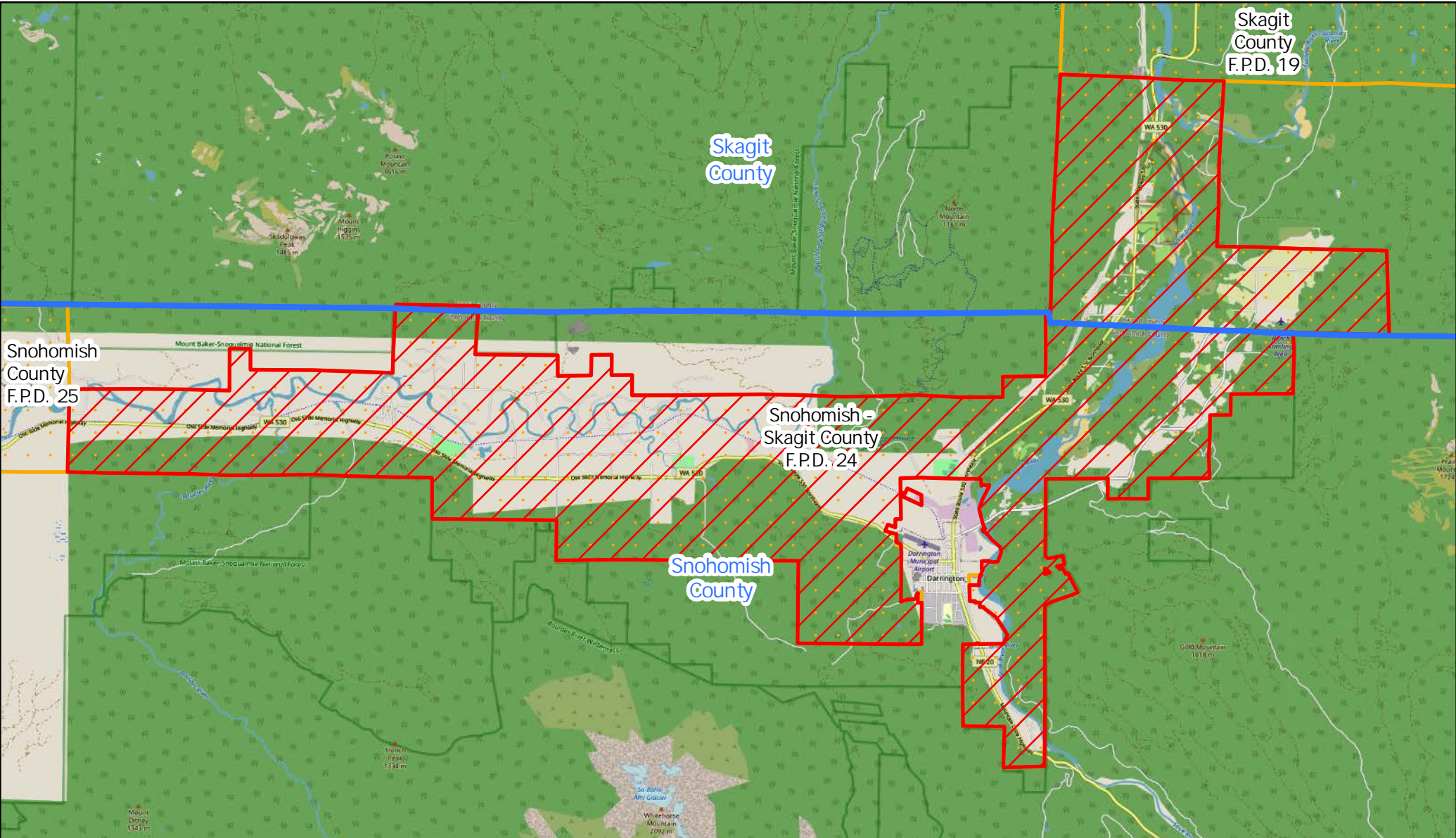


Washington State
Office of Financial Management
Forecasting & Research Division


Disclaimer: By using these data, the user agrees that neither the Office of Financial Management nor the Washington Surveying and Rating Bureau shall be liable for any activity involving these data with regard to lost profits or savings or any other consequential damages; or the fitness for use of the data for a particular purpose; or the installation of the data, its use, or the results obtained.


Data source: Fire Protection Districts and City Limits [Shapefile], Washington Surveying and Rating Bureau, October 1, 2023.


Map prepared by OFM on October 1, 2023.



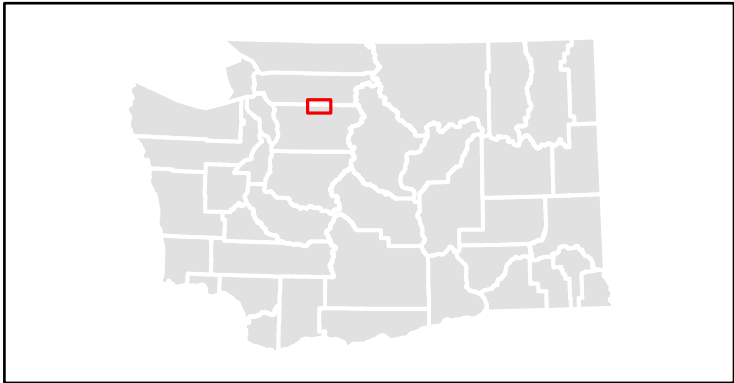
(Unincorporated Portion Only)

 County

 Fire Protection District

 Selected Fire Protection District

N 0 0.5 1 2 Miles





Washington State
Office of Financial Management
Forecasting & Research Division

Disclaimer: By using these data, the user agrees that neither the Office of Financial Management nor the Washington Surveying and Rating Bureau shall be liable for any activity involving these data with regard to lost profits or savings or any other consequential damages; or the fitness for use of the data for a particular purpose; or the installation of the data, its use, or the results obtained.

Data source: Fire Protection Districts and City Limits [Shapefile], Washington Surveying and Rating Bureau, October 1, 2023.

Map prepared by OFM on October 1, 2023.