

State of Washington

2022 Population Trends

Forecasting & Research Division

Office of Financial Management

November 2022



To accommodate persons with disabilities, this document is available in alternative formats by calling the Office of Financial Management at 360-902-0401. TTY/TDD users should contact OFM via the Washington Relay Service at 711 or 1-800-833-6388.

This publication and other current and historical demographic data are available electronically.

Visit our website at www.ofm.wa.gov.

Table of contents

1 Part 1. State, county and city populations

1 Summary of population trends: overall

1 Figure 1: State population change and components of change

2 Figure 2: Driver's licenses surrendered to Washington

2 Figure 3: Births, deaths and natural increase

3 Figure 4: Change in housing units

3 Summary of population trends: counties and cities

4 Figure 5: Percentage change in population by region

6 Figure 6: Distribution of population change by county

7 Part 2. Data tables

7 Table 1: Population and components of population change

8 Table 2: Population and components of population change by county: April 1, 2010, to April 1, 2020

9 Table 3: Population and components of population change by county: April 1, 2020, to April 1, 2021

11 Table 4: Populations of cities, towns and counties: April 1, 2020, to April 1, 2021

18 Table 5: Federal corrections and OFM adjustments to Census 2010 Public Law 94-171 counts

20 Table 6: Rank of cities and towns by April 1, 2021, population size

26 Table 7: Alphabetical listing of cities and towns with April 1, 2021, population

29 Table 8: Housing units by structure type for cities, towns and counties: April 1, 2020, and April 1, 2021

37 Table 9: Annexations, incorporations and other municipal boundary changes approved by OFM

44 Table 10: Population age 65 years and over by county

45 Table 11: Intercensal estimates of population by county: April 1, 2010, to April 1, 2020

46 Part 3. Supplemental population information

46 Washington State statutes related to the population estimates program

46 Population estimates development

47 Small area estimates program

48 Small area demographic estimates

48 Population data products

49 Washington State Data Center and Business and Industry Data Center

50 Acknowledgments

This page intentionally left blank.

Part 1

State, county, and city populations

Population trends provides demographic data for Washington state counties, cities and towns as of April 1, 2022. The Office of Financial Management developed the population determinations in this document and these numbers represent the state's official population figures. Population figures for Washington's counties, cities and towns have been annually prepared for more than five decades. These estimates are cited in numerous statutes that use population as criteria for allocating funds, program eligibility and determining county participation under the Growth Management Act.

The state will use 2022 population estimates for state program administration and to help allocate selected state revenues beginning January 2023 (RCW 36.13.100, 43.62.020, 43.62.030, 66.08.200 and 66.08.210).

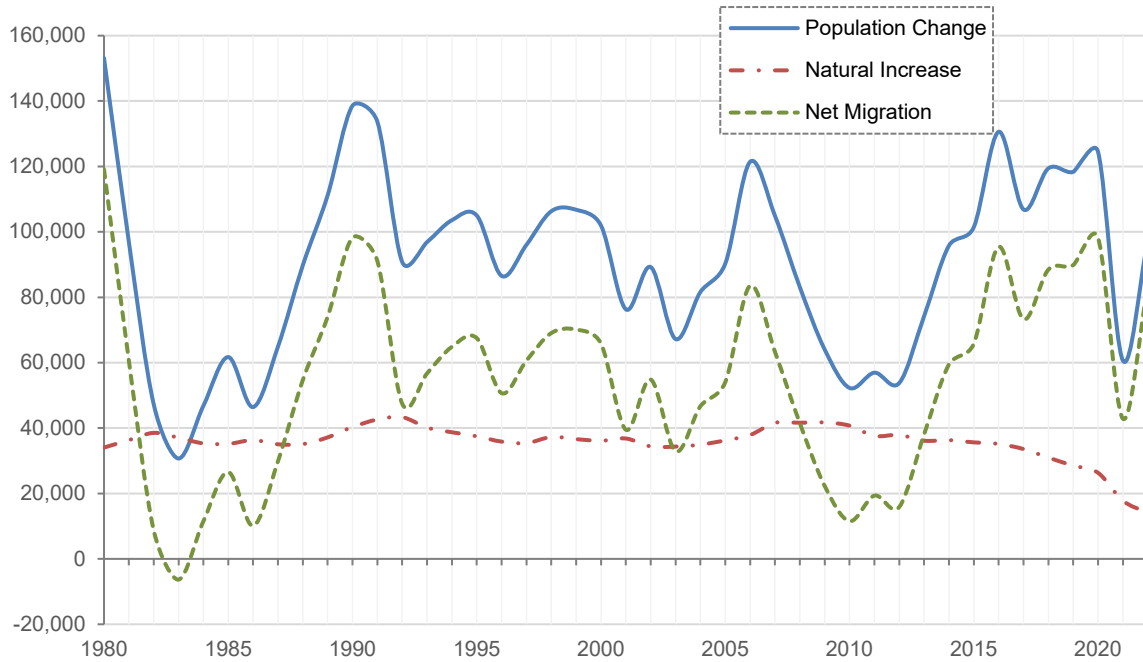
Summary of population trends: Washington

The April 1, 2022, population estimate is 7,864,400. Population increased by 97,425 people (from births, deaths, and net migration) from the 2020 census adjusted base. The crude population growth rate is 1.3%, almost 0.5% more than last year.

As expected, the COVID-19 crisis still affected the 2022 estimates. The findings show a stop to a decrease in births, a continuing increase in deaths, a recovery in migration and in the population who live in group quarters. Many of the group quarters that had population drops in 2021 have rebounded significantly, especially those in college student housing. This is not true for all facilities, notably prisons, which continued to see a decline.

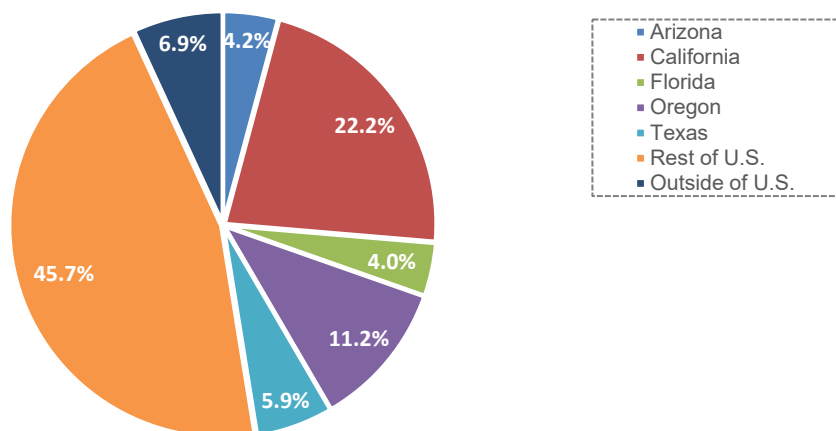
Migration continues to be the primary driver behind population growth. From 2021 to 2022, net migration (people moving in minus people moving out) to Washington totaled 83,300, which is up 40,500 people since the COVID-19 2021. Net migration accounted for 85% of the state's population growth, with natural increase (births minus deaths) responsible for the other 15%. This discrepancy is the largest in the last three decades.

Figure 1. State population change and components of change



Driver's license data can be used to provide trend information about migration flows between Washington and other states. Approximately 49% of in-movers to Washington last year came from California, Oregon, Texas, Florida, and Arizona. The 12-month total of in-movers from these five states was 88,000. The remaining states accounted for 46% of in-migrants, with 7% arriving from other countries.

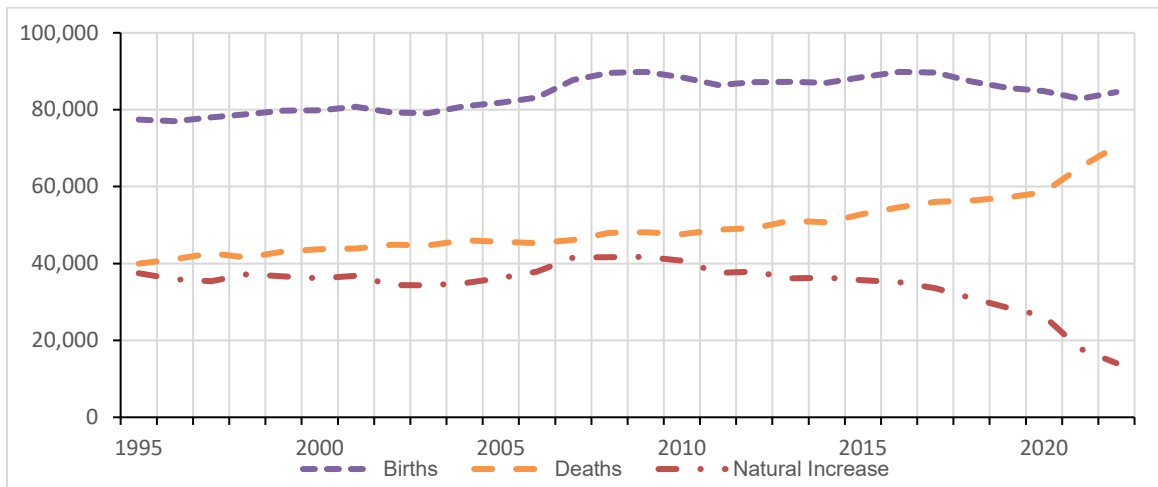
Figure 2. Driver's licenses surrendered to Washington



During the past year, 14,000 people were added to the state's population due to natural increase, down 3,700 from the previous year. Due to lower fertility rates, births have declined even though there are more women of childbearing age. However, this year, births grew slightly from last year.

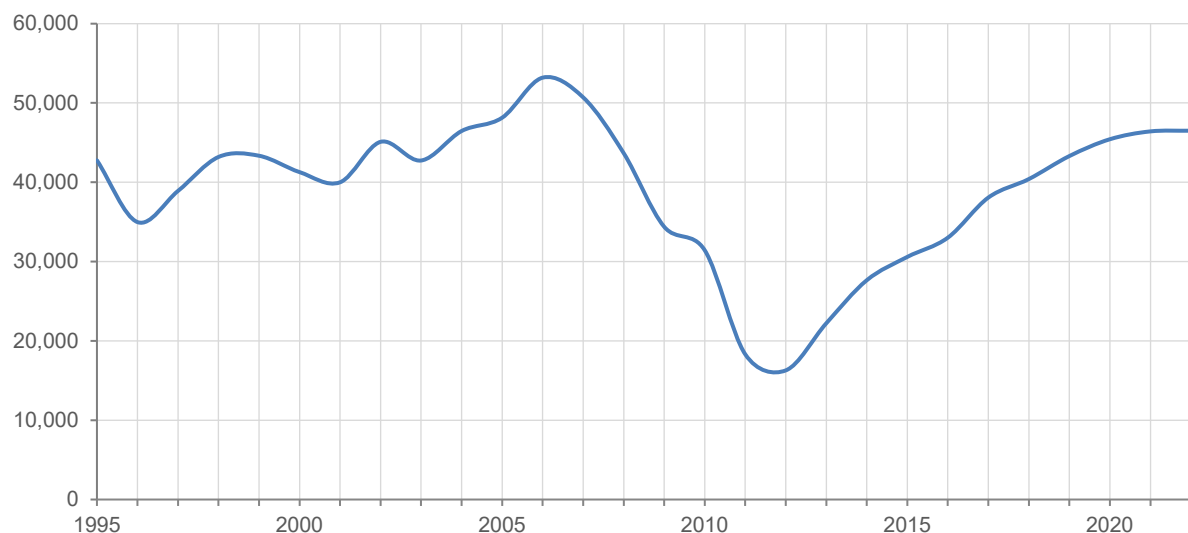
Deaths have increased as the population ages along with higher mortality due to COVID-19. Natural increase, as a share of state total population growth, is expected to gradually decline over time due to increasing mortality. In the last decade, population growth due to natural increase averaged 33,800 persons per year, or 35% of total population growth.

Figure 3. Births, deaths and natural increase



Housing, another indicator of population change, remained strong in 2022. Housing in 2022 increased by 1.4% over the previous year. Washington added 46,500 housing units last year. This decade begins with annual housing change exceeding the previous decade average of 31,500 housing units. Statewide, 58% of all new housing units in 2022 were associated with multi-family structures.

Figure 4. Change in housing units



Summary of Population Trends: Counties and Cities

Population growth remains concentrated in the five largest metropolitan counties. For the ninth year in a row, more than 65% of state population growth occurred in the state's five largest counties: Clark, King, Pierce, Snohomish and Spokane. King County accounted for the largest share of state growth this year, at 31%, followed by Snohomish at just over 9.8% and Pierce at 9.4%. The state's 20 nonmetropolitan counties¹ accounted for 10.2% of population growth.

Different county classification schemes can be used to examine population change in more detail. In 2022, Eastern Washington grew by 1.4% and Western Washington by 1.2%. Metropolitan counties grew 1.3% as did nonmetropolitan counties. Rural counties², grew by 1.1% versus 1.3% for non-rural counties. Distressed area counties³ grew by 0.8% compared to 1.3% for the remaining counties.

¹ Nonmetropolitan counties are the counties that are not metropolitan using the Office of Management and Budget's definition. Please see the following map for the current metropolitan counties:

https://www2.census.gov/geo/maps/metroarea/us_wall/Mar2020/CBSA_WallMap_Mar2020.pdf.

² We use the rural definition described in RCW 82.14.370 that is defined as follows: population density of less than one hundred persons per square mile or a county smaller than two hundred twenty-five square miles (meaning San Juan and Island counties). For counties meeting this rural definition please see: <https://ofm.wa.gov/washington-data-research/population-demographics/population-estimates/population-density/population-density-and-land-area-criteria-used-rural-area-assistance-and-other-programs>

³ Distressed area counties can be found on Washington State's Employment Security Department's website at: <https://esd.wa.gov/labormarketinfo/distressed-areas>.

Figure 5. Percentage change in population by region

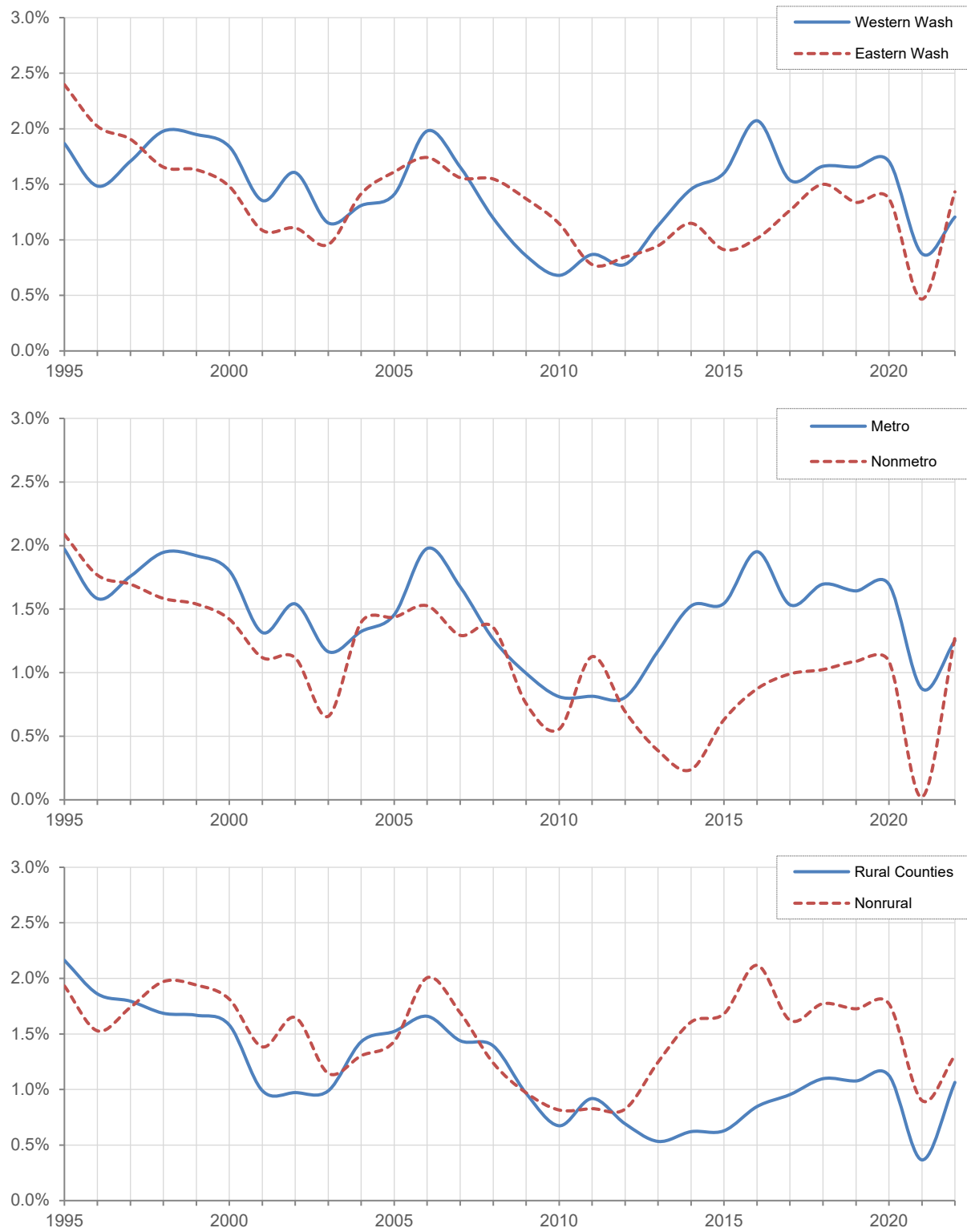
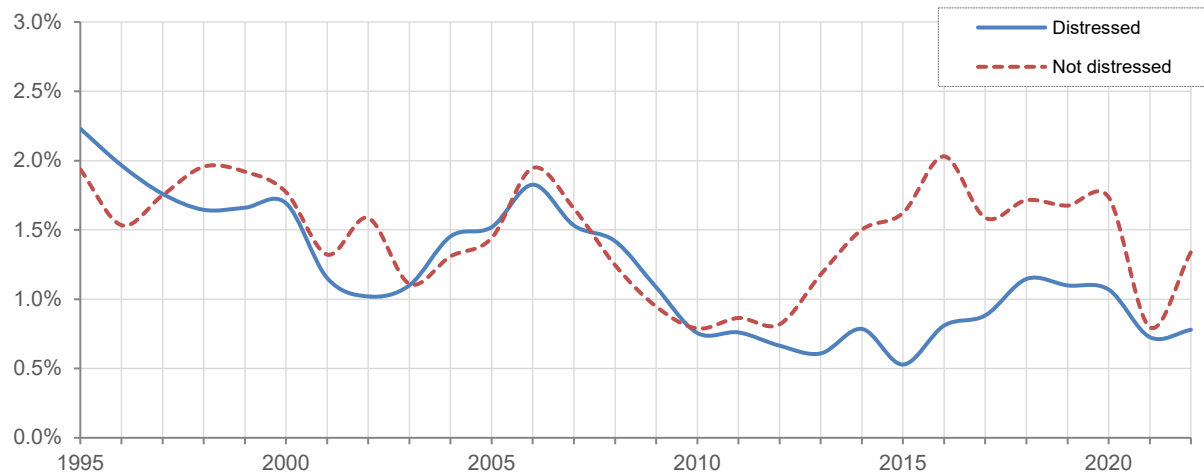
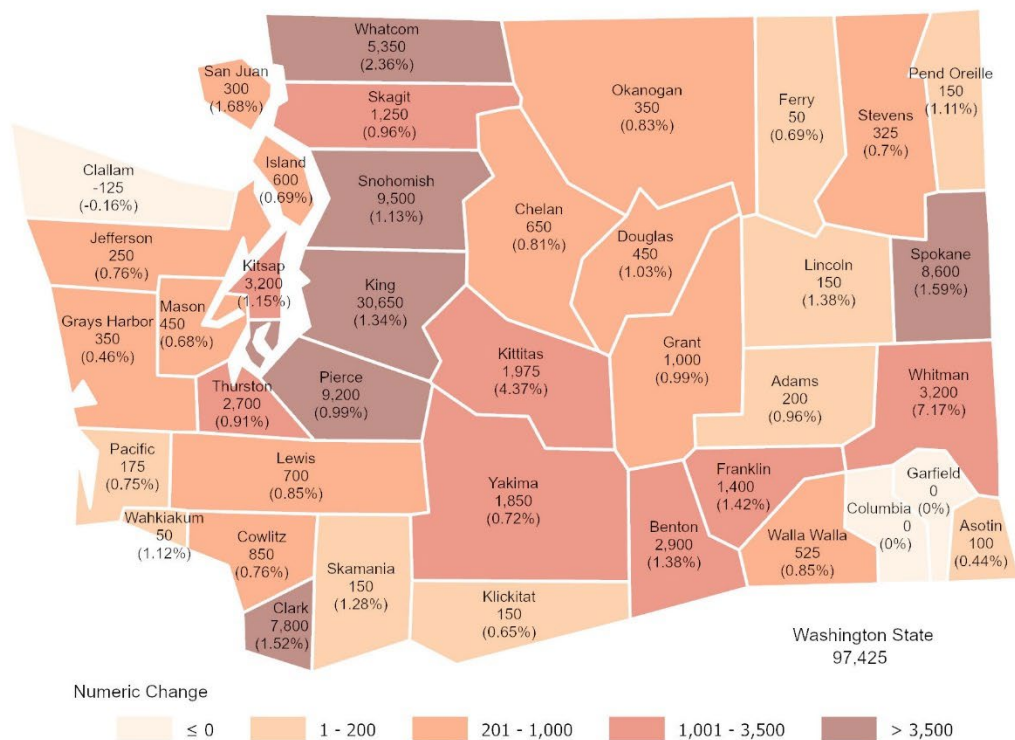


Figure 5. Percentage change in population by region, continued



The geographic distribution of population change by county can be seen in Figure 6. Putting aside growth due to recovery in group quarters, San Juan was the fastest-growing county in 2022, with 1.7% growth, followed by Spokane at 1.6% and Clark at 1.5%. In 2021, 17 counties experienced growth exceeding 1.0%, with six of these being nonmetropolitan counties.

Figure 6. Distribution of population change by county



The population of incorporated places totaled 5,156,000 on April 1, 2022, an increase of 91,800 people since last year. Most of the population growth in incorporated areas was due to natural increase and net migration rather than annexation. Of the total increase in incorporated area population, only 5,884 was due to annexation.

The total unincorporated area population increased by 18,600 persons over the previous year. The five most-populous unincorporated county areas (Pierce, Snohomish, King, Clark, and Kitsap, respectively) have almost as much population as the five largest cities in the state (Seattle, Spokane, Tacoma, Vancouver and Bellevue, respectively): 1.49 million versus 1.57 million.

Part 2

Data tables

Table 1. Population and components of population change

	April 1 Population	Population Change		Components of Change from Previous Period					
		Number	Percentage	Births		Deaths		Natural Increase	Net Migration
				Number	Rate	Number	Rate		Number Rate
10-Year Intervals									
1920	1,356.6	214.6	18.8	227.7	182.2	122.4	98.0	105.2	109.4
1930	1,563.4	206.8	15.2	248.2	170.0	151.1	103.5	97.1	109.7
1940	1,736.2	172.8	11.1	233.6	141.6	176.9	107.2	56.7	116.1
1950	2,379.0	642.8	37.0	452.5	219.9	211.6	102.8	240.9	401.9
1960	2,853.2	474.3	19.9	624.0	238.5	240.6	92.0	383.5	90.8
1970	3,413.3	560.0	19.6	589.3	188.1	282.4	90.1	306.8	253.2
1980	4,132.4	719.1	21.1	547.6	145.1	302.1	80.1	245.5	473.6
1990	4,866.7	734.3	17.8	705.1	156.7	339.9	75.6	365.2	369.2
2000	5,894.1	1,027.5	21.1	787.5	146.4	404.8	75.2	382.7	644.8
2010	6,724.5	830.4	14.1	840.6	133.2	460.4	73.0	380.3	450.1
2020	7,707.0	982.5	14.6	873.7	121.1	535.5	74.2	338.1	644.4
Single Years									
1980	4,132.35	153.15	3.85	65.37	16.12	31.33	7.72	34.04	119.11
1981	4,229.28	96.93	2.35	68.15	16.30	31.84	7.62	36.31	60.62
1982	4,276.55	47.27	1.12	70.27	16.52	31.74	7.46	38.53	8.74
1983	4,307.25	30.70	0.72	69.60	16.22	32.56	7.59	37.04	-6.35
1984	4,354.07	46.82	1.09	68.58	15.84	33.26	7.68	35.32	11.51
1985	4,415.79	61.72	1.42	69.22	15.78	34.05	7.76	35.17	26.55
1986	4,462.21	46.43	1.05	70.32	15.84	34.01	7.66	36.31	10.11
1987	4,527.10	64.89	1.45	69.41	15.44	34.36	7.65	35.04	29.85
1988	4,616.89	89.79	1.98	71.11	15.55	36.00	7.87	35.10	54.68
1989	4,728.08	111.19	2.41	73.21	15.67	36.05	7.72	37.16	74.03
1990	4,866.66	138.59	2.93	76.66	15.98	36.33	7.57	40.32	98.26
1991	5,000.35	133.69	2.75	79.33	16.08	36.71	7.44	42.62	91.07
1992	5,091.14	90.79	1.82	80.57	15.97	37.24	7.38	43.33	47.45
1993	5,188.01	96.87	1.90	79.53	15.47	39.38	7.66	40.15	56.72
1994	5,291.58	103.57	2.00	78.33	14.95	39.61	7.56	38.71	64.85
1995	5,396.57	104.99	1.98	77.45	14.49	39.96	7.48	37.50	67.50
1996	5,483.10	86.53	1.60	77.01	14.16	41.15	7.56	35.86	50.68
1997	5,579.14	96.04	1.75	78.04	14.11	42.63	7.71	35.40	60.63
1998	5,685.46	106.32	1.91	78.83	14.00	41.56	7.38	37.26	69.06
1999	5,792.21	106.76	1.88	79.76	13.90	43.15	7.52	36.61	70.14
2000	5,894.14	101.93	1.76	79.85	13.67	43.74	7.49	36.11	65.82
2001	5,970.45	76.31	1.29	80.73	13.61	43.92	7.40	36.81	39.50
2002	6,059.70	89.25	1.49	79.29	13.18	44.90	7.46	34.39	54.86
2003	6,126.92	67.22	1.11	79.07	12.98	44.73	7.34	34.34	32.88
2004	6,208.53	81.62	1.33	80.96	13.13	46.03	7.46	34.93	46.68
2005	6,298.80	90.27	1.45	81.85	13.09	45.61	7.29	36.24	54.03
2006	6,420.22	121.42	1.93	83.17	13.08	45.28	7.12	37.89	83.53
2007	6,525.12	104.90	1.63	87.75	13.56	46.16	7.13	41.59	63.31
2008	6,608.23	83.11	1.27	89.57	13.64	47.95	7.30	41.62	41.49
2009	6,672.26	64.03	0.97	89.84	13.53	48.12	7.25	41.72	22.31
2010	6,724.54	52.28	0.78	88.41	13.15	47.67	7.09	40.74	11.54
2011	6,781.55	56.94	0.85	86.38	12.79	48.79	7.22	37.60	19.41
2012	6,835.40	53.77	0.79	87.13	12.8	49.23	7.23	37.90	15.94
2013	6,909.67	74.20	1.09	87.25	12.7	51.11	7.44	36.14	38.13
2014	7,005.50	95.76	1.39	87.03	12.51	50.71	7.29	36.32	59.52
2015	7,106.99	101.41	1.45	88.48	12.54	52.85	7.49	35.63	65.85
2016	7,237.66	130.60	1.84	89.82	12.52	54.66	7.62	35.16	95.51
2017	7,344.59	106.85	1.48	89.66	12.3	56.08	7.69	33.59	73.34
2018	7,464.07	119.41	1.63	87.35	11.8	56.37	7.61	30.97	88.51
2019	7,582.48	118.34	1.59	85.71	11.39	57.21	7.60	28.5	89.91
2020	7,706.31	124.49	1.64	84.84	11.1	58.52	7.66	26.32	98.17
2021	7,766.98	60.67	0.79	82.85	10.71	65.04	8.41	17.81	42.86
2022	7,864.40	97.43	1.25	84.59	10.82	70.52	9.02	14.08	83.35

Notes:

- Rates are calculated per 1,000 midpoint population based on unrounded numbers.
- Totals may not add due to rounding.

Table 2. Population and components of population change by county: April 1, 2010, to April 1, 2020

	Census		Total Change: 2010 to 2020						Rank by Percentage Change
	2010	2020	Numeric Change	Percentage Change	Births	Deaths	Natural Increase	Net Migration	
Washington	6,724,540	7,706,310	981,770	14.60	873,652	535,518	338,134	643,636	--
Adams	18,728	20,613	1,885	10.07	3,918	1,194	2,724	-839	20
Asotin	21,623	22,285	662	3.06	2,335	2,471	-136	798	34
Benton	175,177	206,873	31,696	18.09	25,970	13,753	12,217	19,479	3
Chelan	72,453	79,141	6,688	9.23	9,122	6,841	2,281	4,407	22
Clallam	71,404	77,155	5,751	8.05	6,508	9,761	-3,253	9,004	26
Clark	425,363	503,311	77,948	18.33	54,977	33,264	21,713	56,235	2
Columbia	4,078	3,952	-126	-3.09	353	548	-195	69	38
Cowlitz	102,410	110,730	8,320	8.12	12,251	11,262	989	7,331	25
Douglas	38,431	42,938	4,507	11.73	5,190	3,046	2,144	2,363	13
Ferry	7,551	7,178	-373	-4.94	695	846	-151	-222	39
Franklin	78,163	96,749	18,586	23.78	16,205	3,806	12,399	6,187	1
Garfield	2,266	2,286	20	0.88	230	265	-35	55	37
Grant	89,120	99,123	10,003	11.22	15,073	6,800	8,273	1,730	15
Grays Harbor	72,797	75,636	2,839	3.90	7,651	8,303	-652	3,491	32
Island	78,506	86,857	8,351	10.64	9,074	7,169	1,905	6,446	18
Jefferson	29,872	32,977	3,105	10.39	1,887	3,640	-1,753	4,858	19
King	1,931,249	2,269,675	338,426	17.52	249,571	127,574	121,997	216,429	4
Kitsap	251,133	275,611	24,478	9.75	29,929	21,299	8,630	15,848	21
Kittitas	40,915	46,468	5,553	13.57	4,076	3,007	1,069	4,484	9
Klickitat	20,318	22,735	2,417	11.90	2,077	1,867	210	2,207	12
Lewis	75,455	82,149	6,694	8.87	8,969	8,706	263	6,431	23
Lincoln	10,570	10,876	306	2.89	989	1,141	-152	458	35
Mason	60,699	65,726	5,027	8.28	6,357	6,596	-239	5,266	24
Okanogan	41,120	42,104	984	2.39	5,105	4,324	781	203	36
Pacific	20,920	23,365	2,445	11.69	1,877	3,126	-1,249	3,694	14
Pend Oreille	13,001	13,401	400	3.08	1,172	1,521	-349	749	33
Pierce	795,225	920,393	125,168	15.74	113,183	63,540	49,643	75,525	7
San Juan	15,769	17,788	2,019	12.80	884	1,400	-516	2,535	10
Skagit	116,901	129,523	12,622	10.80	14,382	11,709	2,673	9,949	17
Skamania	11,066	11,604	538	4.86	971	869	102	436	31
Snohomish	713,335	827,957	114,622	16.07	95,297	51,525	43,772	70,850	6
Spokane	471,221	539,339	68,118	14.46	59,224	43,989	15,235	52,883	8
Stevens	43,531	46,445	2,914	6.69	4,319	4,456	-137	3,051	28
Thurston	252,264	294,793	42,529	16.86	30,940	21,483	9,457	33,072	5
Wahkiakum	3,978	4,422	444	11.16	273	498	-225	669	16
Walla Walla	58,781	62,584	3,803	6.47	6,530	5,672	858	2,945	29
Whatcom	201,140	226,847	25,707	12.78	22,268	16,123	6,145	19,562	11
Whitman	44,776	47,973	3,197	7.14	4,218	2,646	1,572	1,625	27
Yakima	243,231	256,728	13,497	5.55	39,602	19,478	20,124	-6,627	30

Calculation:	1	2	3=2-1	4=3/1*100	5	6	7=5-6	8=3-7
---------------------	----------	----------	--------------	------------------	----------	----------	--------------	--------------

Notes: • Rankings based on unrounded numbers.

Total Change: 2020 to 2022

Calculation:	1	2	3=2-1	4=3/1*100	5	6	7=5-6	8=3-7
--------------	---	---	-------	-----------	---	---	-------	-------

Notes: • Totals may not add due to rounding.

Table 4. Populations of cities, towns, and counties: April 1, 2020 to April 1, 2022

County Municipality	Census 2020	Estimate 2021'	Estimate 2022	County Municipality	Census 2020	Estimate 2021'	Estimate 2022
Adams	20,613	20,900	21,100	Douglas	42,938	43,550	44,000
Unincorporated	9,472	9,575	9,575	Unincorporated	23,700	24,290	24,590
Incorporated	11,141	11,325	11,525	Incorporated	19,238	19,260	19,410
Hatton	79	80	80	Bridgeport	2,141	2,110	2,135
Lind	535	535	535	Coulee Dam <i>part</i>	200	200	200
Othello	8,549	8,725	8,920	East Wenatchee	14,158	14,180	14,180
Ritzville	1,767	1,775	1,780	Mansfield	326	330	330
Washtucna	211	210	210	Rock Island	1279	1300	1425
				Waterville	1,134	1,140	1,140
Asotin	22,285	22,500	22,600	Ferry	7,178	7,250	7,300
Unincorporated	13,920	14,070	14,165	Unincorporated	6,186	6,250	6,300
Incorporated	8,365	8,430	8,435	Incorporated	992	1,000	1,000
Asotin	1,204	1,215	1,220	Republic	992	1,000	1,000
Clarkston	7,161	7,215	7,215				
Benton	206,873	209,400	212,300	Franklin	96,749	98,350	99,750
Unincorporated	36,556	36,760	37,445	Unincorporated	13,668	13,990	14,195
Incorporated	170,317	172,640	174,855	Incorporated	83,081	84,360	85,555
Benton City	3,479	3,500	3,710	Connell	5,441	5,125	4,840
Kennewick	83,921	84,620	85,320	Kahlotus	147	145	145
Prosser	6,062	6,130	6,195	Mesa	385	390	390
Richland	60,560	61,320	62,220	Pasco	77,108	78,700	80,180
West Richland	16,295	17,070	17,410				
Chelan	79,141	\$ 80,000	80,650	Garfield	2,286	2,300	2,300
Unincorporated	32,507	33,140	33,460	Unincorporated	897	905	905
Incorporated	46,634	\$ 46,860	47,190	Incorporated	1,389	1,395	1,395
Cashmere	3,248	3,260	3,280	Pomeroy	1,389	1,395	1,395
Chelan	4,222	4,320	4,390				
Entiat	1,326	1,340	1,355	Grant	99,123	100,800	101,800
Leavenworth	2,263	2,390	2,515	Unincorporated	44,987	45,635	45,860
Wenatchee	35,575	\$ 35,550	35,650	Incorporated	54,136	55,165	55,940
				Coulee City	549	560	560
Clallam	77,155	77,750	77,625	Coulee Dam <i>part</i>	0	0	0
Unincorporated	45,836	46,170	45,850	Electric City	956	955	960
Incorporated	31,319	31,580	31,775	Ephrata	8,477	8,575	8,620
Forks	3,335	3,335	3,360	George	809	815	820
Port Angeles	19,960	20,120	20,200	Grand Coulee	972	970	965
Sequim	8,024	8,125	8,215	Hartline	180	180	180
				Krupp	49	50	50
Clark	503,311	513,100	520,900	Mattawa	3,335	3,340	3,535
Unincorporated	233,048	\$ 236,200	237,650	Moses Lake	25,146	25,760	26,040
Incorporated	270,263	\$ 276,900	283,250	Quincy	7,543	7,720	7,830
Battle Ground	20,743	21,160	21,780	Royal City	1,776	1,855	1,910
Camas	26,065	26,870	27,250	Soap Lake	1,691	1,695	1,740
La Center	3,424	3,605	3,835	Warden	2,449	2,485	2,525
Ridgefield	10,325	\$ 11,910	13,640	Wilson Creek	204	205	205
Vancouver	190,915	194,400	197,600				
Washougal	17,039	17,200	17,390	Grays Harbor	75,636	76,050	76,400
Woodland <i>part</i>	84	85	85	Unincorporated	28,993	29,020	29,125
Yacolt	1,668	1,670	1,670	Incorporated	46,643	47,030	47,275
				Aberdeen	17,013	17,050	17,040
Columbia	3,952	3,950	3,950	Cosmopolis	1,638	1,655	1,665
Unincorporated	1,385	1,380	1,385	Elma	3,438	3,450	3,460
Incorporated	2,567	2,570	2,565	Hoquiam	8,776	8,785	8,785
Dayton	2,448	2,450	2,445	McCleary	1,997	2,040	2,040
Starbuck	119	120	120	Montesano	4,138	4,145	4,150
				Oakville	715	710	720
Cowlitz	110,730	111,500	112,350	Ocean Shores	6,715	6,965	7,160
Unincorporated	48,339	\$ 49,115	49,850	Westport	2,213	2,230	2,255
Incorporated	62,391	\$ 62,385	62,500				
Castle Rock	2,446	2,445	2,445	Island	86,857	87,100	87,700
Kalama	2,960	\$ 3,010	3,065	Unincorporated	59,146	59,310	59,820
Kelso	12,720	12,720	12,720	Incorporated	27,711	27,790	27,880
Longview	37,818	37,750	37,780	Coupeville	1,942	1,950	1,965
Woodland <i>part</i>	6,447	6,460	6,490	Langley	1,147	1,150	1,155
				Oak Harbor	24,622	24,690	24,760

Table 4. Populations of cities, towns, and counties: April 1, 2020 to April 1, 2022 *(continued)*

County Municipality	Census 2020	Estimate 2021'	Estimate 2022	County Municipality	Census 2020	Estimate 2021'	Estimate 2022
Jefferson	32,977	33,100	33,350	Klickitat <i>continued</i>			
Unincorporated	22,829	22,880	23,060	Bingen	778	780	780
Incorporated	10,148	10,220	10,290	Goldendale	3,453	3,475	3,475
Port Townsend	10,148	10,220	10,290	White Salmon	2,485	2,490	2,490
King	2,269,675	2,287,050	2,317,700	Lewis	82,149	82,700	83,400
Unincorporated	246,266	247,385	248,160	Unincorporated	49,461	49,840	50,185
Incorporated	2,023,409	2,039,665	2,069,540	Incorporated	32,688	32,860	33,215
Algona	3,290	3,290	3,300	Centralia	18,183	18,280	18,360
Auburn <i>part</i>	77,243	78,040	78,690	Chehalis	7,439	7,350	7,365
Beaux Arts	317	315	315	Morton	1,036	1,055	1,070
Bellevue	151,854	152,600	153,900	Mossyrock	768	775	780
Black Diamond	4,697	5,320	6,145	Napavine	1,888	1,895	1,955
Bothell <i>part</i>	28,956	28,930	29,210	Pe Ell	642	640	650
Burien	52,066	52,430	52,490	Toledo	631	635	685
Carnation	2,158	2,150	2,160	Vader	629	645	655
Clyde Hill	3,126	3,110	3,110	Winlock	1,472	1,585	1,695
Covington	20,777	20,890	21,200				
Des Moines	32,888	33,100	33,160	Lincoln	10,876	10,900	11,050
Duvall	8,034	8,125	8,320	Unincorporated	5,290	5,320	5,440
Enumclaw	12,543	12,830	12,910	Incorporated	5,586	5,580	5,610
Federal Way	101,030	101,700	101,800	Almira	318	315	320
Hunts Point	457	455	460	Creston	213	215	215
Issaquah	40,051	40,640	40,950	Davenport	1,703	1,705	1,710
Kenmore	23,914	24,050	24,090	Harrington	429	425	430
Kent	136,588	137,700	137,900	Odessa	896	890	890
Kirkland	92,175	92,900	93,570	Reardan	637	640	650
Lake Forest Park	13,630	13,630	13,620	Sprague	495	495	500
Maple Valley	28,013	28,640	28,920	Wilbur	895	895	895
Medina	2,915	2,920	2,915				
Mercer Island	25,748	25,790	25,780	Mason	65,726	65,750	66,200
Milton <i>part</i>	1640	1630	1630	Unincorporated	55,355	55,340	55,770
Newcastle	13,017	13,310	13,560	Incorporated	10,371	10,410	10,430
Normandy Park	6,771	6,785	6,790	Shelton	10,371	10,410	10,430
North Bend	7,461	7,685	7,915				
Pacific <i>part</i>	7,194	7,215	7,230	Okanogan	42,104	42,350	42,700
Redmond	73,256	73,910	75,270	Unincorporated	25,943	26,105	26,325
Renton	106,785	107,100	107,500	Incorporated	16,161	16,245	16,375
Sammamish	67,455	67,940	68,150	Brewster	1,983	1,995	1,990
SeaTac	31,454	32,000	31,910	Conconully	193	190	190
Seattle	737,015	742,400	762,500	Coulee Dam <i>part</i>	1011	1010	1010
Shoreline	58,608	59,260	60,320	Elmer City	239	245	245
Skykomish	161	160	165	Nespelem	180	180	180
Snoqualmie	14,121	14,490	14,490	Okanogan	2,379	2,395	2,415
Tukwila	21,798	22,000	22,620	Omak	4,860	4,870	4,950
Woodinville	13,069	13,100	13,450	Oroville	1,795	1,800	1,805
Yarrow Point	1,134	1,125	1,125	Pateros	593	590	590
				Riverside	329	325	325
Kitsap	275,611	277,700	280,900	Tonasket	1,103	1,095	1,085
Unincorporated	179,719	180,840	182,040	Twisp	992	1015	1035
Incorporated	95,892	96,860	98,860	Winthrop	504	535	555
Bainbridge Island	24,825	24,930	25,060				
Bremerton	43,505	43,970	45,220	Pacific	23,365	23,425	23,600
Port Orchard	15,587	15,960	16,400	Unincorporated	15,763	15,815	15,960
Poulsbo	11,975	12,000	12,180	Incorporated	7,602	7,610	7,640
				Ilwaco	1087	1085	1100
Kittitas	46,468	45,225	47,200	Long Beach	1,688	1,700	1,715
Unincorporated	20,567	20,530	21,045	Raymond	3,081	3,075	3,090
Incorporated	25,901	24,695	26,155	South Bend	1,746	1,750	1,735
Cle Elum	2,157	2,210	2,250				
Ellensburg	20,797	19,530	20,940	Pend Oreille	13,401	13,475	13,625
Kittitas	1,438	1,440	1,440	Unincorporated	10,272	10,345	10,480
Roslyn	950	955	960	Incorporated	3,129	3,130	3,145
South Cle Elum	559	560	565	Cusick	153	150	155
				Ione	428	425	425
Klickitat	22,735	23,000	23,150	Metalline	162	160	160
Unincorporated	16,019	16,255	16,405	Metalline Falls	272	275	275
Incorporated	6,716	6,745	6,745	Newport	2,114	2,120	2,130

Table 4. Populations of cities, towns, and counties: April 1, 2020 to April 1, 2022 (continued)

County Municipality	Census 2020	Estimate 2021'	Estimate 2022	County Municipality	Census 2020	Estimate 2021'	Estimate 2022
Pierce	920,393	928,200	937,400	Snohomish continued			
Unincorporated	430,248	435,135	440,800	Mukilteo	21,538	21,560	21,590
Incorporated	490,145	493,065	496,600	Snohomish	10,126	10,160	10,200
Auburn <i>part</i>	10,013	10,040	10,060	Stanwood	7,705	7,980	8,405
Bonney Lake	21,750 \$	23,510	22,990	Sultan	5,146	5,370	6,260
Buckley	5,114	5,300	5,315	Woodway	1,318	1,325	1,330
Carbonado	734	740	740				
DuPont	10,151	10,180	10,180	Spokane	539,339	542,100	550,700
Eatonville	2,845	2,875	2,890	Unincorporated	158,524	159,560	162,715
Edgewood	12,327	13,110	13,520	Incorporated	380,815	382,540	387,985
Enumclaw <i>part</i>	0	0	0	Airway Heights	10,757	10,760	11,040
Fife	10,999	11,150	11,130	Cheney	13,255	12,390	12,920
Fircrest	7,156	7,195	7,215	Deer Park	4,383	4,520	4,670
Gig Harbor	12,029	12,200	12,540	Fairfield	589	600	600
Lakewood	63,612	63,600	63,800	Latah	185	185	185
Milton <i>part</i>	7,057	7,065	7,065	Liberty Lake	12,003	12,480	12,870
Orting	9,041	9,010	9,055	Medical Lake	4,874	4,870	4,840
Pacific <i>part</i>	41	40	40	Millwood	1,881	1,915	1,915
Puyallup	42,973	43,060	43,260	Rockford	522	520	545
Roy	816	815	815	Spangle	280	280	280
Ruston	1,055	1,060	1,060	Spokane	228,989	229,400	230,900
South Prairie	373	375	620	Spokane Valley	102,976	104,500	107,100
Steilacoom	6,727	6,745	6,790	Waverly	121	120	120 *
Sumner	10,621	10,700	10,800				
Tacoma	219,346	218,700	220,800	Stevens	46,445	46,725	47,050
University Place	34,866	35,100	35,420	Unincorporated	36,675	36,925	37,172
Wilkeson	499	495	495	Incorporated	9,770	9,800	9,878
				Chewelah	2,470	2,485	2,535
San Juan	17,788	17,850	18,150	Colville	4,917	4,910	4,900
Unincorporated	15,175 \$	15,220	15,470	Kettle Falls	1,636	1,655	1,650
Incorporated	2,613 \$	2,630	2,680	Marcus	216	215	215
Friday Harbor	2,613 \$	2,630	2,680	Northport	297	295	295
				Springdale	234	240	283
Skagit	129,523	130,000	131,250				
Unincorporated	52,606	52,750	52,970	Thurston	294,793	297,800	300,500
Incorporated	76,917	77,250	78,280	Unincorporated	144,856	145,255	143,760
Anacortes	17,637	17,750	17,880	Incorporated	149,937	152,545	156,740
Burlington	9,152	9,290	9,800	Bucoda	600	595	610
Concrete	801	805	810	Lacey	53,526	54,850	58,180
Hamilton	299	295	295	Olympia	55,382 \$	55,960	56,370
La Conner	965	970	980	Rainier	2,369	2,440	2,510
Lyman	423	420	425	Tenino	1,870	2,010	2,030
Mount Vernon	35,219	35,390	35,500	Tumwater	25,573 \$	26,050	26,360
Sedro-Woolley	12,421	12,330	12,590	Yelm	10,617	10,640	10,680
Skamania	11,604 \$	11,750	11,900	Wahkiakum	4,422	4,475	4,525
Unincorporated	9,148	9,255	9,375	Unincorporated	3,862	3,915	3,965
Incorporated	2,456 \$	2,495	2,525	Incorporated	560	560	560
North Bonneville	965 \$	970	975	Cathlamet	560	560	560
Stevenson	1,491	1,525	1,550				
				Walla Walla	62,584	62,100	62,625
Snohomish	827,957	837,800	847,300	Unincorporated	17,084	17,110	17,200
Unincorporated	367,716	371,300	371,915	Incorporated	45,500	44,990	45,425
Incorporated	460,241	466,500	475,385	College Place	9,902	9,775	9,855
Arlington	19,868	20,690	21,260	Prescott	372	370	370
Bothell <i>part</i>	19,205	19,400	19,730	Waitsburg	1,166	1,165	1,180
Brier	6,560	6,570	6,590	Walla Walla	34,060	33,680	34,020
Darrington	1,462	1,470	1,490				
Edmonds	42,853	42,900	42,980	Whatcom	226,847	226,300	231,650
Everett	110,629	112,300	113,300	Unincorporated	92,660 \$	92,730	93,130
Gold Bar	2,403	2,420	2,290	Incorporated	134,187 \$	133,570	138,520
Granite Falls	4,450	4,490	4,705	Bellingham	91,482	89,860	93,910
Index	155	155	155	Blaine	5,884	6,020	6,130
Lake Stevens	35,630	37,000	40,700	Everson	2,888	2,935	3,060
Lynnwood	38,568	38,650	38,740	Ferndale	15,048	15,570	15,970
Marysville	70,714	71,250	72,380	Lynden	15,749	15,930	16,150
Mill Creek	20,926	20,930	21,510	Nooksack	1,471	1,515	1,560
Monroe	19,699	19,900	19,700	Sumas	1,665 *	1,740	1,740
Mountlake Terrace	21,286	21,980	22,070				

<u>County Municipality</u>	<u>Census 2020</u>	<u>Estimate 2021¹</u>	<u>Estimate 2022</u>	<u>County Municipality</u>	<u>Census 2020</u>	<u>Estimate 2021¹</u>	<u>Estimate 2022</u>
Whitman	47,973	44,600	47,800	Yakima <i>continued</i>			
Unincorporated	5,929	5,880	5,920	Grandview	10,910	\$ 10,960	11,020
Incorporated	42,044	38,720	41,880	Granger	3,624	3,690	3,740
Albion	550	545	545	Harrah	585	580	580
Colfax	2,782	2,765	2,785	Mabton	1,959	1,975	1,975
Colton	401	400	405	Moxee	4,326	4,405	4,665
Endicott	312	310	310	Naches	1,084	1,110	1,125
Farmington	131	135	140	Selah	8,153	8,235	8,365
Garfield	562	565	565	Sunnyside	16,375	16,400	16,500
LaCrosse	297	300	300	Tieton	1,389	1,430	1,505
Lamont	79	80	80	Toppenish	8,854	8,870	8,870
Malden	216	110	135	Union Gap	6,568	6,595	6,640
Oakesdale	395	400	400	Wapato	4,607	4,610	4,615
Palouse	1,015	1,020	1,035	Yakima	96,968	97,810	98,200
Pullman	32,901	29,690	32,790	Zillah	3,179	3,190	3,195
Rosalia	598	600	590				
St. John	599	600	600				
Tekoa	817	810	810				
Uniontown	389	390	390				
Yakima	256,728	258,100	259,950	Washington	7,706,310	7,766,975	7,864,400
Unincorporated	88,147	\$ 88,240	88,955	Unincorporated	2,668,754	2,689,740	2,708,392
Incorporated	168,581	\$ 169,860	170,995	Incorporated	5,037,556	5,077,235	5,156,008

- Notes:
- The county and municipal populations shown for 2020 are, with a few exceptions, the 2020 federal census PL 94-174 counts. Some 2020 counts may differ from the federal census. See Table 5 for more information.
 - With the exception of corrections to federal census counts, annual estimates in this official series are not revised on the basis of other information that becomes available after the estimate date.
 - ¹The 2021 estimates in this table were revised November 30, 2021 after the 2020 Census P.L. 94-171 became available. These 2021 estimates supersede the estimates OFM released on June 30, 2021.

- Symbols:
- * State certified special census
 - # Informal census. A population and housing count that is considered accurate but does not meet all special census certification.
 - + Informal count. A population count that is considered accurate but does not meet special census certification.
 - \$ Adjusted census 2020 population and housing. See Table 5 for more information.

Table 5. Federal corrections and OFM adjustments to Census 2020 Public Law 94-171 counts

The Office of Financial Management is responsible for April 1 population determinations that are used for state revenue allocations to local governments and in selected state programs requiring population as a criterion for funding and/or administration.

Abbreviations: Occ. - Occupied, Vac. - Vacant, HH - Household, GQ - Group Quarters

I. OFM Adjustments to Census 2020 Counts Due to Misallocation of Housing Units and/or Group Quarters

<u>Municipality</u>	<u>Federal Census 2020</u>						<u>Change</u>						<u>Adjusted Federal Census</u>					
	<u>Housing Units</u>			<u>Population</u>			<u>Housing Units</u>			<u>Population</u>			<u>Housing Units</u>			<u>Population</u>		
	Total	Occ.	Vac.	HH	GQ	Total	Total	Occ.	Vac.	HH	GQ	Total	Total	Occ.	Vac.	HH	GQ	Total
Bonney Lake	7,605	7,364	241	21,724	763	22,487	0	0	0	0	-737	-737	7,605	7,364	241	21,724	26	21,750
Ellensburg	8,924	8,110	814	17,573	1093	18,666	0	0	0	0	2,131	2,131	8,924	8,110	814	17,573	3,224	20,797
North Bonneville	454	426	28	989	408	1,397	-2	-2	0	-24	-408	-432	452	424	28	965	0	965
Wenatchee	14,594	13,793	801	34,529	979	35,508	0	0	0	0	67	67	14,594	13,793	801	34,529	1,046	35,375
Total	23,972	22,329	1,643	53,091	2,480	55,571	-2	-2	0	-24	1,790	1,766	23,970	22,327	1,643	53,067	4,270	57,137

II. OFM Adjustments to Census 2020 Counts Due to Annexation Activity from Jan. 2, 2020, through April 1, 2020

<u>Municipality</u>	<u>Federal Census 2020</u>						<u>Change</u>						<u>Adjusted Federal Census</u>					
	<u>Housing Units</u>			<u>Population</u>			<u>Housing Units</u>			<u>Population</u>			<u>Housing Units</u>			<u>Population</u>		
	Total	Occ.	Vac.	HH	GQ	Total	Total	Occ.	Vac.	HH	GQ	Total	Total	Occ.	Vac.	HH	GQ	Total
Friday Harbor	1,453	1,174	279	2,567	46	2,613	1	0	1	0	0	0	1,454	1,174	280	2,567	46	2,613
Grandview	3,273	3,160	113	10,824	83	10,907	2	2	0	3	0	3	3,275	3,162	113	10,827	83	10,910
Kalama	1,271	1,198	73	2,959	0	2,959	1	1	0	1	0	1	1,272	1,199	73	2,960	0	2,960
Ridgefield	3,687	3,432	255	10,290	29	10,319	1	1	0	6	0	6	3,688	3,433	255	10,296	29	10,325
Total	9,684	8,964	720	26,640	158	26,798	5	4	1	10	0	10	9,689	8,968	721	26,650	158	26,808

III. OFM Certified April 1, 2020, Special City Census Counts Used in Place of Census 2020 Counts

<u>Municipality</u>	<u>Federal Census 2020</u>						<u>Special City Census</u>					
	<u>Housing Units</u>			<u>Population</u>			<u>Housing Units</u>			<u>Population</u>		
	Total	Occ.	Vac.	HH	GQ	Total	Total	Occ.	Vac.	HH	GQ	Total
Sumas	604	568	36	1,583	0	1,583	675	618	57	1,665	0	1,665
Total	604	568	36	1,583	0	1,583	675	618	57	1,665	0	1,665

Table 5. Federal corrections and OFM adjustments to Census 2020 Public Law 94-171 counts *(continued)*

IV. Summary of Changes to 2020 Federal Census Counts Due to Federal Corrections, Annexations and Special City Censuses

Municipality	Federal Census 2020						Change						Adjusted Federal Census					
	Housing Units			Population			Housing Units			Population			Housing Units			Population		
	Total	Occ.	Vac.	HH	GQ	Total	Total	Occ.	Vac.	HH	GQ	Total	Total	Occ.	Vac.	HH	GQ	Total
Chelan																		
Wenatchee* (C)	14,594	13,793	801	34,529	979	35,508	0	0	0	0	67	67	14,594	13,793	801	34,529	1,046	35,375
Clark																		
Ridgefield (A)	3,687	3,432	255	10,290	29	10,319	1	1	0	6	0	6	3,688	3,433	255	10,296	29	10,325
Cowlitz																		
Kalama (A)	1,271	1,198	73	2,959	0	2,959	1	1	0	1	0	1	1,272	1,199	73	2,960	0	2,960
Kittitas																		
Ellensburg* (C)	8,924	8,110	814	17,573	1093	18,666	0	0	0	0	2,131	2,131	8,924	8,110	814	17,573	3,224	20,797
Pierce																		
Bonney Lake* (C)	7,605	7,364	241	21,724	763	22,487	0	0	0	0	-737	-737	7,605	7,364	241	21,724	26	21,750
San Juan																		
Friday Harbor (A)	1,453	1,174	279	2,567	46	2,613	1	0	1	0	0	0	1,454	1,174	280	2,567	46	2,613
Skamania																		
N. Bonneville* (C)	454	426	28	989	408	1,397	-2	-2	0	-24	-408	-432	452	424	28	965	0	965
Whatcom																		
Sumas (B)	604	568	36	1,583	0	1,583	--	--	--	--	--	--	675	618	57	1,665	0	1,665
Yakima																		
Grandview (A)	3,273	3,160	113	10,824	83	10,907	2	2	0	3	0	3	3,275	3,162	113	10,827	83	10,910

Symbols: A Population and housing units added to the cities due to annexations effective from Jan. 2, 2020, through April 1, 2020.
 B Special city April 1, 2020, censuses used in place of the federal censuses.
 C OFM corrections to federal counts due to misallocation of population and housing units. OFM corrections with an asterisk (*) effect county and state totals.

Table 6. Rank of cities and towns by April 1, 2020 and April 1, 2022 population size

<u>Municipality</u>	<u>Census 2020</u>	<u>Estimate 2022</u>	<u>Rank by Population Size</u>		<u>Population Change: 2020 to 2022</u>		
			<u>2020</u>	<u>2022</u>	<u>Numeric Change</u>	<u>Rank by Numeric Change</u>	<u>Change Due to Annexation</u>
Seattle	737,015	762,500	1	1	25,485	1	0
Spokane	228,989	230,900	2	2	1,911	12	0
Tacoma	219,346	220,800	3	3	1,454	18	0
Vancouver	190,915	197,600	4	4	6,685	2	0
Bellevue	151,854	153,900	5	5	2,046	10	0
Kent	136,588	137,900	6	6	1,312	23	0
Everett	110,629	113,300	7	7	2,671	8	0
Renton	106,785	107,500	8	8	715	43	108
Spokane Valley	102,976	107,100	9	9	4,124	5	0
Federal Way	101,030	101,800	10	10	770	42	0
Yakima	96,968	98,200	11	11	1,232	25	9
Bellingham	91,482	93,910	13	12	2,428	9	443
Kirkland	92,175	93,570	12	13	1,395	21	0
Auburn	87,256	88,750	14	14	1,494	17	0
Kennewick	83,921	85,320	15	15	1,399	20	0
Pasco	77,108	80,180	16	16	3,072	7	10
Redmond	73,256	75,270	17	17	2,014	11	0
Marysville	70,714	72,380	18	18	1,666	15	0
Sammamish	67,455	68,150	19	19	695	45	0
Lakewood	63,612	63,800	20	20	188	85	0
Richland	60,560	62,220	21	21	1,660	16	8
Shoreline	58,608	60,320	22	22	1,712	14	0
Lacey	53,526	58,180	24	23	4,654	4	2518
Olympia	55,382	56,370	23	24	988	31	0
Burien	52,066	52,490	25	25	424	54	0
Bothell	48,161	48,940	26	26	779	41	0
Bremerton	43,505	45,220	27	27	1,715	13	0
Puyallup	42,973	43,260	28	28	287	64	41
Edmonds	42,853	42,980	29	29	127	103	0
Issaquah	40,051	40,950	30	30	899	34	0
Lake Stevens	35,630	40,700	33	31	5,070	3	3624
Lynnwood	38,568	38,740	31	32	172	89	0
Longview	37,818	37,780	32	33	-38	273	0
Wenatchee	35,575	35,650	34	34	75	113	77
Mount Vernon	35,219	35,500	35	35	281	69	0
University Place	34,866	35,420	36	36	554	48	0
Walla Walla	34,060	34,020	37	37	-40	274	144
Des Moines	32,888	33,160	39	38	272	70	0
Pullman	32,901	32,790	38	39	-111	278	4
SeaTac	31,454	31,910	40	40	456	51	0
Maple Valley	28,013	28,920	41	41	907	33	0
Camas	26,065	27,250	42	42	1,185	27	1
Tumwater	25,573	26,360	44	43	787	39	0
Moses Lake	25,146	26,040	45	44	894	35	118
Mercer Island	25,748	25,780	43	45	32	141	0
Bainbridge Island	24,825	25,060	46	46	235	77	0
Oak Harbor	24,622	24,760	47	47	138	99	0
Kenmore	23,914	24,090	48	48	176	88	0
Bonney Lake	21,750	22,990	50	49	1,240	24	0
Tukwila	21,798	22,620	49	50	822	37	0

Table 6. Rank of cities and towns by April 1, 2020 and April 1, 2022 population size (continued)

Municipality	Census 2020	Estimate 2022	Rank by Population Size		Population Change: 2020 to 2022		
			2020	2022	Numeric Change	Rank by Numeric Change	Change Due to Annexation
Mountlake Terrace	21,286	22,070	52	51	784	40	0
Battle Ground	20,743	21,780	56	52	1,037	30	12
Mukilteo	21,538	21,590	51	53	52	127	0
Mill Creek	20,926	21,510	53	54	584	47	0
Arlington	19,868	21,260	58	55	1,392	22	36
Covington	20,777	21,200	55	56	423	55	0
Ellensburg	20,797	20,940	54	57	143	95	670
Port Angeles	19,960	20,200	57	58	240	76	0
Monroe	19,699	19,700	59	59	1	220	0
Centralia	18,183	18,360	60	60	177	87	0
Anacortes	17,637	17,880	61	61	243	75	0
West Richland	16,295	17,410	65	62	1,115	28	0
Washougal	17,039	17,390	62	63	351	62	0
Aberdeen	17,013	17,040	63	64	27	147	0
Sunnyside	16,375	16,500	64	65	125	104	0
Port Orchard	15,587	16,400	67	66	813	38	0
Lynden	15,749	16,150	66	67	401	57	0
Ferndale	15,048	15,970	68	68	922	32	0
Snoqualmie	14,121	14,490	70	69	369	60	0
East Wenatchee	14,158	14,180	69	70	22	154	0
Ridgefield	10,325	13,640	88	71	3,315	6	12
Lake Forest Park	13,630	13,620	71	72	-10	267	0
Newcastle	13,017	13,560	74	73	543	49	0
Edgewood	12,327	13,520	78	74	1,193	26	0
Woodinville	13,069	13,450	73	75	381	58	0
Cheney	13,255	12,920	72	76	-335	280	0
Enumclaw	12,543	12,910	76	77	367	61	0
Liberty Lake	12,003	12,870	80	78	867	36	0
Kelso	12,720	12,720	75	79	0	229	0
Sedro-Woolley	12,421	12,590	77	80	169	91	1
Gig Harbor	12,029	12,540	79	81	511	50	4
Poulsbo	11,975	12,180	81	82	205	81	0
Fife	10,999	11,130	82	83	131	102	69
Airway Heights	10,757	11,040	84	84	283	68	0
Grandview	10,910	11,020	83	85	110	107	3
Sumner	10,621	10,800	85	86	179	86	0
Yelm	10,617	10,680	86	87	63	120	14
Shelton	10,371	10,430	87	88	59	122	0
Port Townsend	10,148	10,290	90	89	142	97	0
Snohomish	10,126	10,200	91	90	74	115	0
DuPont	10,151	10,180	89	91	29	144	0
College Place	9,902	9,855	92	92	-47	275	0
Burlington	9,152	9,800	93	93	648	46	0
Orting	9,041	9,055	94	94	14	165	0
Othello	8,549	8,920	98	95	371	59	0
Toppenish	8,854	8,870	95	96	16	159	0
Hoquiam	8,776	8,785	96	97	9	182	0
Milton	8,697	8,695	97	98	-2	245	396
Ephrata	8,477	8,620	99	99	143	95	0
Stanwood	7,705	8,405	103	100	700	44	0

Table 6. Rank of cities and towns by April 1, 2020 and April 1, 2022 population size (continued)

<u>Municipality</u>	<u>Census 2020</u>	<u>Estimate 2022</u>	<u>Rank by Population Size</u>		<u>Population Change: 2020 to 2022</u>		
			<u>2020</u>	<u>2022</u>	<u>Numeric Change</u>	<u>Rank by Numeric Change</u>	<u>Change Due to Annexation</u>
Selah	8,153	8,365	100	101	212	80	0
Duvall	8,034	8,320	101	102	286	67	0
Sequim	8,024	8,215	102	103	191	84	0
North Bend	7,461	7,915	105	104	454	52	0
Quincy	7,543	7,830	104	105	287	64	0
Chehalis	7,439	7,365	106	106	-74	276	0
Pacific	7,235	7,270	107	107	35	138	0
Clarkston	7,161	7,215	108	108	54	125	0
Fircrest	7,156	7,215	109	108	59	122	0
Ocean Shores	6,715	7,160	112	110	445	53	0
Normandy Park	6,771	6,790	110	111	19	158	0
Steilacoom	6,727	6,790	111	111	63	120	0
Union Gap	6,568	6,640	113	113	72	116	0
Brier	6,560	6,590	114	114	30	143	0
Woodland	6,531	6,575	115	115	44	132	0
Sultan	5,146	6,260	119	116	1,114	29	3
Prosser	6,062	6,195	116	117	133	101	22
Black Diamond	4,697	6,145	124	118	1,448	19	0
Blaine	5,884	6,130	117	119	246	74	0
Buckley	5,114	5,315	120	120	201	82	0
Omak	4,860	4,950	123	121	90	110	0
Colville	4,917	4,900	121	122	-17	270	0
Connell	5,441	4,840	118	123	-601	281	0
Medical Lake	4,874	4,840	122	123	-34	272	0
Granite Falls	4,450	4,705	126	125	255	71	0
Deer Park	4,383	4,670	127	126	287	64	0
Moxee	4,326	4,665	128	127	339	63	0
Wapato	4,607	4,615	125	128	8	186	0
Chelan	4,222	4,390	129	129	168	92	0
Montesano	4,138	4,150	130	130	12	171	3
La Center	3,424	3,835	135	131	411	56	5
Granger	3,624	3,740	131	132	116	105	0
Benton City	3,479	3,710	132	133	231	78	0
Mattawa	3,335	3,535	136	134	200	83	0
Goldendale	3,453	3,475	133	135	22	154	0
Elma	3,438	3,460	134	136	22	154	0
Forks	3,335	3,360	136	137	25	151	6
Algona	3,290	3,300	138	138	10	177	0
Cashmere	3,248	3,280	139	139	32	141	0
Zillah	3,179	3,195	140	140	16	159	0
Clyde Hill	3,126	3,110	141	141	-16	269	0
Raymond	3,081	3,090	142	142	9	182	0
Kalama	2,960	3,065	143	143	105	108	1
Everson	2,888	3,060	145	144	172	89	59
Medina	2,915	2,915	144	145	0	229	0
Eatonville	2,845	2,890	146	146	45	131	0
Colfax	2,782	2,785	147	147	3	207	0
Friday Harbor	2,613	2,680	148	148	67	117	0
Chewelah	2,470	2,535	150	149	65	119	0
Warden	2,449	2,525	151	150	76	112	0

Table 6. Rank of cities and towns by April 1, 2020 and April 1, 2022 population size (continued)

<u>Municipality</u>	<u>Census 2020</u>	<u>Estimate 2022</u>	<u>Rank by Population Size</u>		<u>Population Change: 2020 to 2022</u>		
			<u>2020</u>	<u>2022</u>	<u>Numeric Change</u>	<u>Rank by Numeric Change</u>	<u>Change Due to Annexation</u>
Leavenworth	2,263	2,515	157	151	252	72	0
Rainier	2,369	2,510	156	152	141	98	0
White Salmon	2,485	2,490	149	153	5	197	28
Castle Rock	2,446	2,445	153	154	-1	239	0
Dayton	2,448	2,445	152	154	-3	252	0
Okanogan	2,379	2,415	155	156	36	137	2
Gold Bar	2,403	2,290	154	157	-113	279	0
Westport	2,213	2,255	158	158	42	135	0
Cle Elum	2,157	2,250	160	159	93	109	0
Carnation	2,158	2,160	159	160	2	212	1
Bridgeport	2,141	2,135	161	161	-6	261	0
Newport	2,114	2,130	162	162	16	159	0
McCleary	1,997	2,040	163	163	43	133	0
Tenino	1,870	2,030	169	164	160	93	0
Brewster	1,983	1,990	164	165	7	190	0
Mabton	1,959	1,975	165	166	16	159	0
Coupeville	1,942	1,965	166	167	23	152	0
Napavine	1,888	1,955	167	168	67	117	0
Millwood	1,881	1,915	168	169	34	139	0
Royal City	1,776	1,910	171	170	134	100	0
Oroville	1,795	1,805	170	171	10	177	0
Ritzville	1,767	1,780	172	172	13	168	7
Soap Lake	1,691	1,740	175	173	49	129	0
Sumas	1,665	1,740	178	173	75	113	0
South Bend	1,746	1,735	173	175	-11	268	0
Long Beach	1,688	1,715	176	176	27	147	0
Davenport	1,703	1,710	174	177	7	190	0
Winlock	1,472	1,695	182	178	223	79	0
Yacolt	1,668	1,670	177	179	2	212	0
Cosmopolis	1,638	1,665	179	180	27	147	0
Kettle Falls	1,636	1,650	180	181	14	165	9
Nooksack	1,471	1,560	183	182	89	111	11
Stevenson	1,491	1,550	181	183	59	122	0
Tieton	1,389	1,505	186	184	116	105	0
Darrington	1,462	1,490	184	185	28	146	0
Kittitas	1,438	1,440	185	186	2	212	0
Rock Island	1,279	1,425	190	187	146	94	113
Pomeroy	1,389	1,395	186	188	6	192	0
Entiat	1,326	1,355	188	189	29	144	0
Woodway	1,318	1,330	189	190	12	171	0
Asotin	1,204	1,220	192	191	16	159	0
Coulee Dam	1,211	1,210	191	192	-1	239	0
Waitsburg	1,166	1,180	193	193	14	165	0
Langley	1,147	1,155	194	194	8	186	0
Waterville	1,134	1,140	195	195	6	192	0
Naches	1,084	1,125	199	196	41	136	0
Yarrow Point	1,134	1,125	195	196	-9	266	0
Ilwaco	1,087	1,100	198	198	13	168	0
Tonasket	1,103	1,085	197	199	-18	271	0
Morton	1,036	1,070	201	200	34	139	0

Table 6. Rank of cities and towns by April 1, 2020 and April 1, 2022 population size (continued)

<u>Municipality</u>	<u>Census 2020</u>	<u>Estimate 2022</u>	<u>Rank by Population Size</u>		<u>Population Change: 2020 to 2022</u>		
			<u>2020</u>	<u>2022</u>	<u>Numeric Change</u>	<u>Rank by Numeric Change</u>	<u>Change Due to Annexation</u>
Ruston	1,055	1,060	200	201	5	197	0
Palouse	1,015	1,035	202	202	20	157	0
Twisp	992	1,035	203	202	43	133	0
Republic	992	1,000	203	204	8	186	0
La Conner	965	980	206	205	15	164	0
North Bonneville	965	975	206	206	10	177	0
Grand Coulee	972	965	205	207	-7	263	0
Electric City	956	960	208	208	4	203	0
Roslyn	950	960	209	208	10	177	0
Wilbur	895	895	211	210	0	229	0
Odessa	896	890	210	211	-6	261	0
George	809	820	214	212	11	174	0
Roy	816	815	213	213	-1	239	0
Concrete	801	810	215	214	9	182	0
Tekoa	817	810	212	214	-7	263	0
Bingen	778	780	216	216	2	212	0
Mossyrock	768	780	217	216	12	171	0
Carbonado	734	740	218	218	6	192	0
Oakville	715	720	219	219	5	197	0
Toledo	631	685	222	220	54	125	0
Vader	629	655	223	221	26	150	0
Pe Ell	642	650	220	222	8	186	0
Reardan	637	650	221	222	13	168	0
South Prairie	373	620	248	224	247	73	0
Bucoda	600	610	224	225	10	177	0
Fairfield	589	600	228	226	11	174	0
St. John	599	600	225	226	1	220	0
Pateros	593	590	227	228	-3	252	0
Rosalia	598	590	226	228	-8	265	0
Harrah	585	580	229	230	-5	259	0
Garfield	562	565	230	231	3	207	0
South Cle Elum	559	565	232	231	6	192	0
Cathlamet	560	560	231	233	0	229	0
Coulee City	549	560	234	233	11	174	0
Winthrop	504	555	237	235	51	128	5
Albion	550	545	233	236	-5	259	0
Rockford	522	545	236	236	23	152	0
Lind	535	535	235	238	0	229	0
Sprague	495	500	239	239	5	197	0
Wilkeson	499	495	238	240	-4	256	0
Hunts Point	457	460	240	241	3	207	0
Harrington	429	430	241	242	1	220	0
Ione	428	425	242	243	-3	252	0
Lyman	423	425	243	243	2	212	0
Colton	401	405	244	245	4	203	0
Oakesdale	395	400	245	246	5	197	0
Mesa	385	390	247	247	5	197	0
Uniontown	389	390	246	247	1	220	0
Prescott	372	370	249	249	-2	245	0
Mansfield	326	330	251	250	4	203	0
Riverside	329	325	250	251	-4	256	0

Table 6. Rank of cities and towns by April 1, 2020 and April 1, 2022 population size (continued)

<u>Municipality</u>	<u>Census 2020</u>	<u>Estimate 2022</u>	<u>Rank by Population Size</u>		<u>Population Change: 2020 to 2022</u>		
			<u>2020</u>	<u>2022</u>	<u>Numeric Change</u>	<u>Rank by Numeric Change</u>	<u>Change Due to Annexation</u>
Riverside	329	325	250	251	-4	256	0
Almira	318	320	252	252	2	212	0
Beaux Arts Village	317	315	253	253	-2	245	0
Endicott	312	310	254	254	-2	245	0
LaCrosse	297	300	256	255	3	207	0
Hamilton	299	295	255	256	-4	256	0
Northport	297	295	256	256	-2	245	0
Springdale	234	283	261	258	49	129	0
Spangle	280	280	258	259	0	229	0
Metaline Falls	272	275	259	260	3	207	0
Elmer City	239	245	260	261	6	192	0
Creston	213	215	264	262	2	212	0
Marcus	216	215	262	262	-1	239	0
Washtucna	211	210	265	264	-1	239	0
Wilson Creek	204	205	266	265	1	220	0
Conconully	193	190	267	266	-3	252	0
Latah	185	185	268	267	0	229	0
Hartline	180	180	269	268	0	229	0
Nespelem	180	180	269	268	0	229	0
Skykomish	161	165	272	270	4	203	0
Metaline	162	160	271	271	-2	245	0
Cusick	153	155	274	272	2	212	0
Index	155	155	273	272	0	229	0
Kahlotus	147	145	275	274	-2	245	0
Farmington	131	140	276	275	9	182	0
Malden	216	135	262	276	-81	277	0
Starbuck	119	120	278	277	1	220	0
Waverly	121	120	277	277	-1	239	0
Hatton	79	80	279	279	1	220	0
Lamont	79	80	279	279	1	220	0
Krupp	49	50	281	281	1	220	0

- Notes:
- Part cities are combined for ranking purposes.
 - Negative annexed populations mean the city/town either de-annexed area or had a boundary line adjustment with either an adjoining city/town or its county.
 - With few exceptions, year 2020 data are federal census Public Law 94-171 data. See Table 5 for more information.

Table 7. Alphabetical listing of cities and towns with population for April 1, 2022

<u>Municipality</u>	<u>County</u>	<u>Population</u>	<u>Municipality</u>	<u>County</u>	<u>Population</u>
Aberdeen	Grays Harbor	17,040	Connell	Franklin	4,840
Airway Heights	Spokane	11,040	Cosmopolis	Grays Harbor	1,665
Albion	Whitman	545	Coulee City	Grant	560
Algona	King	3,300	Coulee Dam <i>part</i>	Douglas	200
Almira	Lincoln	320	Coulee Dam <i>part</i>	Grant	0
Anacortes	Skagit	17,880	Coulee Dam <i>part</i>	Okanogan	1,010
Arlington	Snohomish	21,260	Coupeville	Island	1,965
Asotin	Asotin	1,220	Covington	King	21,200
Auburn <i>part</i>	King	78,690	Creston	Lincoln	215
Auburn <i>part</i>	Pierce	10,060	Cusick	Pend Oreille	155
Bainbridge Island	Kitsap	25,060	Darrington	Snohomish	1,490
Battle Ground	Clark	21,780	Davenport	Lincoln	1,710
Beaux Arts Village	King	315	Dayton	Columbia	2,445
Bellevue	King	153,900	Deer Park	Spokane	4,670
Bellingham	Whatcom	93,910	Des Moines	King	33,160
Benton City	Benton	3,710	DuPont	Pierce	10,180
Bingen	Klickitat	780	Duvall	King	8,320
Black Diamond	King	6,145	East Wenatchee	Douglas	14,180
Blaine	Whatcom	6,130	Eatonville	Pierce	2,890
Bonney Lake	Pierce	22,990	Edgewood	Pierce	13,520
Bothell <i>part</i>	King	29,210	Edmonds	Snohomish	42,980
Bothell <i>part</i>	Snohomish	19,730	Electric City	Grant	960
Bremerton	Kitsap	45,220	Ellensburg	Kittitas	20,940
Brewster	Okanogan	1,990	Elma	Grays Harbor	3,460
Bridgeport	Douglas	2,135	Elmer City	Okanogan	245
Brier	Snohomish	6,590	Endicott	Whitman	310
Buckley	Pierce	5,315	Entiat	Chelan	1,355
Bucoda	Thurston	610	Enumclaw <i>part</i>	King	12,910
Burien	King	52,490	Enumclaw <i>part</i>	Pierce	0
Burlington	Skagit	9,800	Ephrata	Grant	8,620
Camas	Clark	27,250	Everett	Snohomish	113,300
Carbonado	Pierce	740	Everson	Whatcom	3,060
Carnation	King	2,160	Fairfield	Spokane	600
Cashmere	Chelan	3,280	Farmington	Whitman	140
Castle Rock	Cowlitz	2,445	Federal Way	King	101,800
Cathlamet	Wahkiakum	560	Ferndale	Whatcom	15,970
Centralia	Lewis	18,360	Fife	Pierce	11,130
Chehalis	Lewis	7,365	Fircrest	Pierce	7,215
Chelan	Chelan	4,390	Forks	Clallam	3,360
Cheney	Spokane	12,920	Friday Harbor	San Juan	2,680
Chewelah	Stevens	2,535	Garfield	Whitman	565
Clarkston	Asotin	7,215	George	Grant	820
Cle Elum	Kittitas	2,250	Gig Harbor	Pierce	12,540
Clyde Hill	King	3,110	Gold Bar	Snohomish	2,290
Colfax	Whitman	2,785	Goldendale	Klickitat	3,475
College Place	Walla Walla	9,855	Grand Coulee	Grant	965
Colton	Whitman	405	Grandview	Yakima	11,020
Colville	Stevens	4,900	Granger	Yakima	3,740
Conconully	Okanogan	190	Granite Falls	Snohomish	4,705
Concrete	Skagit	810	Hamilton	Skagit	295

Table 7. Alphabetical listing of cities and towns with population for April 1, 2022 *(continued)*

<u>Municipality</u>	<u>County</u>	<u>Population</u>	<u>Municipality</u>	<u>County</u>	<u>Population</u>
Harrah	Yakima	580	Metaline	Pend Oreille	160
Harrington	Lincoln	430	Metaline Falls	Pend Oreille	275
Hartline	Grant	180	Mill Creek	Snohomish	21,510
Hatton	Adams	80	Millwood	Spokane	1,915
Hoquiam	Grays Harbor	8,785	Milton <i>part</i>	King	1,630
Hunts Point	King	460	Milton <i>part</i>	Pierce	7,065
Ilwaco	Pacific	1,100	Monroe	Snohomish	19,700
Index	Snohomish	155	Montesano	Grays Harbor	4,150
Ione	Pend Oreille	425	Morton	Lewis	1,070
Issaquah	King	40,950	Moses Lake	Grant	26,040
Kahlotus	Franklin	145	Mossyrock	Lewis	35,500
Kalama	Cowlitz	3,065	Mount Vernon	Skagit	22,070
Kelso	Cowlitz	12,720	Mountlake Terrace	Snohomish	4,665
Kenmore	King	24,090	Moxee	Yakima	21,590
Kennewick	Benton	85,320	Mukilteo	Snohomish	1,125
Kent	King	137,900	Naches	Yakima	1,955
Kettle Falls	Stevens	1,650	Napavine	Lewis	180
Kirkland	King	93,570	Nespelem	Okanogan	13,560
Kittitas	Kittitas	1,440	Newcastle	King	2,130
Krupp	Grant	50	Newport	Pend Oreille	35,500
La Center	Clark	3,835	Nooksack	Whatcom	1,560
La Conner	Skagit	980	Normandy Park	King	6,790
Lacey	Thurston	58,180	North Bend	King	7,915
LaCrosse	Whitman	300	North Bonneville	Skamania	975
Lake Forest Park	King	13,620	Northport	Stevens	295
Lake Stevens	Snohomish	40,700	Oak Harbor	Island	24,760
Lakewood	Pierce	63,800	Oakesdale	Whitman	400
Lamont	Whitman	80	Oakville	Grays Harbor	720
Langley	Island	1,155	Ocean Shores	Grays Harbor	7,160
Latah	Spokane	185	Odessa	Lincoln	890
Leavenworth	Chelan	2,515	Okanogan	Okanogan	2,415
Liberty Lake	Spokane	12,870	Olympia	Thurston	56,370
Lind	Adams	535	Omak	Okanogan	4,950
Long Beach	Pacific	1,715	Oroville	Okanogan	1,805
Longview	Cowlitz	37,780	Orting	Pierce	9,055
Lyman	Skagit	425	Othello	Adams	8,920
Lynden	Whatcom	16,150	Pacific <i>part</i>	King	7,230
Lynnwood	Snohomish	38,740	Pacific <i>part</i>	Pierce	40
Mabton	Yakima	1,975	Palouse	Whitman	1,035
Malden	Whitman	135	Pasco	Franklin	80,180
Mansfield	Douglas	330	Pateros	Okanogan	590
Maple Valley	King	28,920	Pe Ell	Lewis	650
Marcus	Stevens	215	Pomeroy	Garfield	1,395
Marysville	Snohomish	72,380	Port Angeles	Clallam	20,200
Mattawa	Grant	3,535	Port Orchard	Kitsap	16,400
McCleary	Grays Harbor	2,040	Port Townsend	Jefferson	10,290
Medical Lake	Spokane	4,840	Poulsbo	Kitsap	12,180
Medina	King	2,915	Prescott	Walla Walla	370
Mercer Island	King	25,780	Prosser	Benton	6,195
Mesa	Franklin	390	Pullman	Whitman	32,790

Table 7. Alphabetical listing of cities and towns with population for April 1, 2022 *(continued)*

<u>Municipality</u>	<u>County</u>	<u>Population</u>	<u>Municipality</u>	<u>County</u>	<u>Population</u>
Puyallup	Pierce	43,260	Tenino	Thurston	2,030
Quincy	Grant	7,830	Tieton	Yakima	1,505
Rainier	Thurston	2,510	Toledo	Lewis	685 *
Raymond	Pacific	3,090	Tonasket	Okanogan	1,085
Reardan	Lincoln	650	Toppenish	Yakima	8,870
Redmond	King	75,270	Tukwila	King	22,620
Renton	King	107,500	Tumwater	Thurston	26,360
Republic	Ferry	1,000	Twisp	Okanogan	1,035
Richland	Benton	62,220	Union Gap	Yakima	6,640
Ridgefield	Clark	13,640	Uniontown	Whitman	390
Ritzville	Adams	1,780	University Place	Pierce	35,420
Riverside	Okanogan	325	Vader	Lewis	655
Rock Island	Douglas	1,425	Vancouver	Clark	197,600
Rockford	Spokane	545	Waitsburg	Walla Walla	1,180
Rosalia	Whitman	590	Walla Walla	Walla Walla	34,020
Roslyn	Kittitas	960	Wapato	Yakima	4,615
Roy	Pierce	815	Warden	Grant	2,525
Royal City	Grant	1,910	Washougal	Clark	17,390
Ruston	Pierce	1,060	Washtucna	Adams	210
Sammamish	King	68,150	Waterville	Douglas	1,140
SeaTac	King	31,910	Waverly	Spokane	120
Seattle	King	762,500	Wenatchee	Chelan	35,650
Sedro-Woolley	Skagit	12,590	West Richland	Benton	17,410
Selah	Yakima	8,365	Westport	Grays Harbor	2,255
Sequim	Clallam	8,215	White Salmon	Klickitat	2,490
Shelton	Mason	10,430	Wilbur	Lincoln	895
Shoreline	King	60,320	Wilkeson	Pierce	495
Skykomish	King	165	Wilson Creek	Grant	205
Snohomish	Snohomish	10,200	Winlock	Lewis	1,695
Snoqualmie	King	14,490	Winthrop	Okanogan	555
Soap Lake	Grant	1,740	Woodinville	King	13,450
South Bend	Pacific	1,735	Woodland <i>part</i>	Clark	85
South Cle Elum	Kittitas	565	Woodland <i>part</i>	Cowlitz	6,490
South Prairie	Pierce	620	Woodway	Snohomish	1,330
Spangle	Spokane	280	Yacolt	Clark	1,670
Spokane	Spokane	230,900	Yakima	Yakima	98,200
Spokane Valley	Spokane	107,100	Yarrow Point	King	1,125
Sprague	Lincoln	500	Yelm	Thurston	10,680
Springdale	Stevens	283 *	Zillah	Yakima	3,195
St. John	Whitman	600			
Stanwood	Snohomish	8,405			
Starbuck	Columbia	120			
Steilacoom	Pierce	6,790			
Stevenson	Skamania	1,550			
Sultan	Snohomish	6,260			
Sumas	Whatcom	1,740			
Sumner	Pierce	10,800			
Sunnyside	Yakima	16,500			
Tacoma	Pierce	220,800			
Tekoa	Whitman	810			

Symbols: * State certified special census: a population and housing count that meets all special census certification requirements.
 # Informal census: a population and housing count that is considered accurate but does not meet all special census certification requirements.
 + Informal count: a population count that is considered accurate but does not meet all special census certification requirements.

Table 8. Housing units by structure type for cities, towns and counties: April 1, 2020, and April 1, 2022

County Municipality	April 1, 2020, Structure Type				Estimated April 1, 2022, Structure Type			
	Total	1 Unit	2+ Units	MH/TR/Spec	Total	1 Unit	2+ Units	MH/TR/Spec
Adams	6,735	4,225	916	1,594	6,922	4,390	924	1,608
Unincorporated	2,862	1,396	116	1,350	2,904	1,425	116	1,363
Incorporated	3,873	2,829	800	244	4,018	2,965	808	245
Hatton	26	7	2	17	26	7	2	17
Lind	248	207	4	37	249	207	4	38
Othello	2,616	1,878	665	73	2,754	2,009	673	72
Ritzville	872	665	129	78	879	670	129	80
Washtucna	111	72	0	39	110	72	0	38
Asotin	10,034	7,005	1,605	1,424	10,214	7,119	1,646	1,449
Unincorporated	6,239	4,389	591	1,259	6,371	4,498	593	1,280
Incorporated	3,795	2,616	1,014	165	3,843	2,621	1,053	169
Asotin	508	369	78	61	514	373	78	63
Clarkston	3,287	2,247	936	104	3,329	2,248	975	106
Benton	80,076	53,002	18,161	8,913	83,014	55,155	18,749	9,110
Unincorporated	12,810	7,716	281	4,813	13,185	8,001	299	4,885
Incorporated	67,266	45,286	17,880	4,100	69,829	47,154	18,450	4,225
Benton City	1,381	1,002	99	280	1,493	1,083	108	302
Kennewick	32,242	20,381	9,891	1,970	33,132	20,941	10,157	2,034
Prosser	2,346	1,586	538	222	2,400	1,635	538	227
Richland	25,524	17,800	6,938	786	26,526	18,537	7,191	798
West Richland	5,773	4,517	414	842	6,278	4,958	456	864
Chelan	37,267	26,127	6,775	4,365	38,398	26,860	7,148	4,390
Unincorporated	17,092	12,888	744	3,460	17,742	13,414	844	3,484
Incorporated	20,175	13,239	6,031	905	20,656	13,446	6,304	906
Cashmere	1,226	838	337	51	1,235	843	341	51
Chelan	2,570	1,926	526	118	2,689	2,031	541	117
Entiat	575	349	39	187	595	366	40	189
Leavenworth	1,210	805	384	21	1,449	832	596	21
Wenatchee	14,594	9,321	4,745	528	14,688	9,374	4,786	528
Clallam	37,930	26,753	4,402	6,775	38,384	27,054	4,440	6,890
Unincorporated	22,587	16,610	611	5,366	22,804	16,737	636	5,431
Incorporated	15,343	10,143	3,791	1,409	15,580	10,317	3,804	1,459
Forks	1,407	681	210	516	1,418	688	210	520
Port Angeles	9,567	7,008	2,170	389	9,661	7,055	2,180	426
Sequim	4,369	2,454	1,411	504	4,501	2,574	1,414	513
Clark	195,036	137,296	46,923	10,817	203,749	141,844	51,031	10,874
Unincorporated	84,568	69,130	7,308	8,130	86,849	70,437	8,192	8,220
Incorporated	110,468	68,166	39,615	2,687	116,900	71,407	42,839	2,654
Battle Ground	7,449	5,916	1,280	253	7,885	6,329	1,294	262
Camas	9,234	8,137	1,062	35	9,730	8,563	1,132	35
La Center	1,248	1,095	78	75	1,430	1,273	82	75
Ridgefield	3,688	3,394	237	57	5,148	4,546	545	57
Vancouver	81,809	44,042	35,904	1,863	85,511	44,958	38,728	1,825
Washougal	6,444	5,078	1,037	329	6,601	5,230	1,041	330
Woodland (part)	55	24	0	31	54	26	0	28
Yacolt	541	480	17	44	541	482	17	42
Columbia	2,190	1,627	178	385	2,216	1,632	178	406
Unincorporated	884	639	6	239	900	650	6	244
Incorporated	1,306	988	172	146	1,316	982	172	162
Dayton	1,227	941	172	114	1,228	938	172	118
Starbuck	79	47	0	32	88	44	0	44

Table 8. Housing units by structure type for cities, towns and counties: April 1, 2020, and April 1, 2022 *(continued)*

County Municipality	April 1, 2020, Structure Type				Estimated April 1, 2022, Structure Type			
	Total	1 Unit	2+ Units	MH/TR/Spec	Total	1 Unit	2+ Units	MH/TR/Spec
Cowlitz	45,424	31,500	7,989	5,935	46,255	32,123	8,073	6,059
Unincorporated	19,195	14,260	637	4,298	19,880	14,813	664	4,403
Incorporated	26,229	17,240	7,352	1,637	26,375	17,310	7,409	1,656
Castle Rock	988	693	184	111	987	691	185	111
Kalama	1,272	861	215	196	1,323	894	229	200
Kelso	5,217	3,384	1,429	404	5,221	3,379	1,437	405
Longview	16,478	10,875	4,910	693	16,557	10,907	4,943	707
Woodland (part)	2,274	1,427	614	233	2,287	1,439	615	233
Douglas	17,318	11,513	2,532	3,273	17,912	11,966	2,664	3,282
Unincorporated	9,949	6,961	606	2,382	10,451	7,331	729	2,391
Incorporated	7,369	4,552	1,926	891	7,461	4,635	1,935	891
Bridgeport	709	281	112	316	710	280	112	318
Coulee Dam (part)	96	96	0	0	96	96	0	0
East Wenatchee	5,479	3,403	1,768	308	5,493	3,408	1,777	308
Mansfield	166	110	22	34	167	111	22	34
Rock Island	439	298	4	137	510	370	4	136
Waterville	480	364	20	96	485	370	20	95
Ferry	4,059	2,753	158	1,148	4,131	2,817	158	1,156
Unincorporated	3,528	2,488	44	996	3,596	2,548	44	1,004
Incorporated	531	265	114	152	535	269	114	152
Republic	531	265	114	152	535	269	114	152
Franklin	29,740	21,614	4,857	3,269	31,036	22,580	5,154	3,302
Unincorporated	4,196	2,692	113	1,391	4,338	2,798	130	1,410
Incorporated	25,544	18,922	4,744	1,878	26,698	19,782	5,024	1,892
Connell	1,021	557	217	247	1,038	573	219	246
Kahlotus	70	37	2	31	67	37	2	28
Mesa	119	44	0	75	121	46	0	75
Pasco	24,334	18,284	4,525	1,525	25,472	19,126	4,803	1,543
Garfield	1,194	871	59	264	1,206	874	59	273
Unincorporated	481	345	2	134	489	348	2	139
Incorporated	713	526	57	130	717	526	57	134
Pomeroy	713	526	57	130	717	526	57	134
Grant	38,635	21,642	5,871	11,122	39,957	22,504	6,101	11,352
Unincorporated	17,687	9,052	947	7,688	18,164	9,386	931	7,847
Incorporated	20,948	12,590	4,924	3,434	21,793	13,118	5,170	3,505
Coulee City	323	202	45	76	331	207	46	78
Coulee Dam (part)	0	0	0	0	0	0	0	0
Electric City	487	380	29	78	488	381	29	78
Ephrata	3,342	2,386	638	318	3,419	2,445	654	320
George	248	59	69	120	254	66	69	119
Grand Coulee	551	326	86	139	549	325	86	138
Hartline	77	68	0	9	78	68	0	10
Krupp	29	24	0	5	29	24	0	5
Mattawa	819	150	191	478	879	150	243	486
Moses Lake	10,257	6,287	2,829	1,141	10,705	6,535	2,972	1,198
Quincy	2,431	1,514	588	329	2,548	1,625	594	329
Royal City	520	237	116	167	569	274	128	167
Soap Lake	940	510	187	243	983	545	191	247
Warden	811	365	146	300	847	390	158	299
Wilson Creek	113	82	0	31	114	83	0	31
Grays Harbor	36,058	25,832	4,792	5,434	36,868	26,480	4,839	5,549
Unincorporated	12,921	9,000	283	3,638	13,148	9,193	285	3,670
Incorporated	23,137	16,832	4,509	1,796	23,720	17,287	4,554	1,879

Table 8. Housing units by structure type for cities, towns and counties: April 1, 2020, and April 1, 2022 *(continued)*

County Municipality	April 1, 2020, Structure Type				Estimated April 1, 2022, Structure Type			
	Total	1 Unit	2+ Units	MH/TR/Spec	Total	1 Unit	2+ Units	MH/TR/Spec
Grays Harbor <i>continued</i>								
Aberdeen	7,236	4,823	2,045	368	7,255	4,834	2,049	372
Cosmopolis	712	601	41	70	724	601	47	76
Elma	1,381	901	303	177	1,392	911	303	178
Hoquiam	3,908	2,866	894	148	3,919	2,864	894	161
McCleary	823	706	95	22	841	724	95	22
Montesano	1,786	1,356	344	86	1,791	1,360	344	87
Oakville	287	206	0	81	290	211	0	79
Ocean Shores	5,518	4,412	431	675	5,987	4,792	463	732
Westport	1,486	961	356	169	1,521	990	359	172
Island	41,922	32,603	4,565	4,754	42,425	32,934	4,656	4,835
Unincorporated	30,106	25,271	785	4,050	30,503	25,566	797	4,140
Incorporated	11,816	7,332	3,780	704	11,922	7,368	3,859	695
Coupeville	1,016	688	200	128	1,029	692	208	129
Langley	743	526	217	0	750	530	220	0
Oak Harbor	10,057	6,118	3,363	576	10,143	6,146	3,431	566
Jefferson	19,087	14,428	1,453	3,206	19,430	14,675	1,476	3,279
Unincorporated	13,395	10,109	363	2,923	13,652	10,323	369	2,960
Incorporated	5,692	4,319	1,090	283	5,778	4,352	1,107	319
Port Townsend	5,692	4,319	1,090	283	5,778	4,352	1,107	319
King	969,234	516,685	434,586	17,870	1,001,577	520,807	462,876	17,894
Unincorporated	92,938	79,169	7,960	5,809	93,957	79,755	8,415	5,787
Incorporated	876,296	437,516	426,626	12,061	907,620	441,052	454,461	12,107
Algona	1,048	824	43	181	1,054	829	44	181
Auburn (part)	28,049	15,313	10,065	2,671	28,687	15,438	10,573	2,676
Beaux Arts Village	118	118	0	0	118	118	0	0
Bellevue	64,688	32,823	31,860	5	65,891	32,883	33,003	5
Black Diamond	1,841	1,569	57	215	2,573	2,093	258	222
Bothell (part)	12,682	5,514	6,137	1,031	12,863	5,570	6,262	1,031
Burien	20,785	12,736	8,038	11	21,021	12,762	8,248	11
Carnation	814	704	64	46	819	709	64	46
Clyde Hill	1,098	1,086	12	0	1,093	1,081	12	0
Covington	7,149	6,171	904	74	7,398	6,331	993	74
Des Moines	13,222	7,789	5,225	208	13,390	7,846	5,340	204
Duvall	2,778	2,411	182	185	2,927	2,435	307	185
Enumclaw (part)	5,365	3,536	1,341	488	5,553	3,713	1,344	496
Federal Way	37,677	20,529	15,818	1,330	37,990	20,595	16,066	1,329
Hunts Point	185	185	0	0	186	186	0	0
Issaquah	17,303	8,059	9,242	2	17,849	8,158	9,689	2
Kenmore	9,589	6,598	2,704	287	9,690	6,648	2,755	287
Kent	49,157	27,352	19,923	1,882	49,732	27,578	20,281	1,873
Kirkland	40,019	22,020	17,945	54	40,939	22,238	18,649	52
Lake Forest Park	5,565	4,653	908	4	5,561	4,649	908	4
Maple Valley	9,435	8,070	814	551	9,856	8,390	915	551
Medina	1,131	1,131	0	0	1,132	1,130	2	0
Mercer Island	10,570	7,431	3,139	0	10,589	7,441	3,148	0
Milton (part)	687	338	222	127	684	335	222	127
Newcastle	5,471	3,368	2,091	12	5,807	3,390	2,405	12
Normandy Park	2,807	2,231	574	2	2,818	2,239	576	3
North Bend	2,951	2,097	671	183	3,149	2,296	671	182
Pacific (part)	2,466	1,478	839	149	2,480	1,492	839	149
Redmond	31,738	13,706	17,689	343	33,163	13,811	19,009	343
Renton	43,362	22,988	19,382	992	43,733	23,183	19,561	989
Sammamish	22,544	19,877	2,618	49	22,820	20,119	2,653	48

Table 8. Housing units by structure type for cities, towns and counties: April 1, 2020, and April 1, 2022 *(continued)*

County Municipality	April 1, 2020, Structure Type				Estimated April 1, 2022, Structure Type			
	Total	1 Unit	2+ Units	MH/TR/Spec	Total	1 Unit	2+ Units	MH/TR/Spec
King <i>continued</i>								
SeaTac	11,774	5,771	5,480	523	11,851	5,692	5,590	569
Seattle	368,308	141,304	226,863	141	388,133	141,806	246,186	141
Shoreline	24,043	16,314	7,656	73	25,241	16,333	8,835	73
Skykomish	154	133	7	14	155	134	7	14
Snoqualmie	4,674	4,005	669	0	4,871	4,009	862	0
Tukwila	8,742	3,694	4,823	225	9,198	3,708	5,266	224
Woodinville	5,895	3,275	2,616	4	6,198	3,280	2,914	4
Yarrow Point	412	407	5	0	408	404	4	0
Kitsap	113,248	80,518	21,982	10,748	115,443	81,976	22,599	10,868
Unincorporated	72,321	54,065	8,612	9,644	73,179	54,764	8,640	9,775
Incorporated	40,927	26,453	13,370	1,104	42,264	27,212	13,959	1,093
Bainbridge Island	11,251	8,898	1,984	369	11,385	8,992	2,025	368
Bremerton	18,351	9,924	8,070	357	19,123	10,369	8,407	347
Port Orchard	6,209	4,152	1,906	151	6,526	4,326	2,049	151
Poulsbo	5,116	3,479	1,410	227	5,230	3,525	1,478	227
Kittitas	23,743	15,731	5,222	2,790	24,753	16,498	5,428	2,827
Unincorporated	12,242	9,619	536	2,087	12,748	10,096	534	2,118
Incorporated	11,501	6,112	4,686	703	12,005	6,402	4,894	709
Cle Elum	1,116	859	188	69	1,175	890	212	73
Ellensburg	8,924	4,234	4,376	314	9,358	4,483	4,560	315
Kittitas	591	281	73	237	591	281	73	237
Roslyn	611	568	29	14	617	574	29	14
South Cle Elum	259	170	20	69	264	174	20	70
Klickitat	10,533	6,690	877	2,966	10,868	6,950	923	2,995
Unincorporated	7,317	4,688	171	2,458	7,617	4,925	196	2,496
Incorporated	3,216	2,002	706	508	3,251	2,025	727	499
Bingen	337	223	74	40	339	224	74	41
Goldendale	1,665	942	366	357	1,683	945	372	366
White Salmon	1,214	837	266	111	1,229	856	281	92
Lewis	35,412	23,192	4,283	7,937	36,166	23,619	4,374	8,173
Unincorporated	21,747	14,567	553	6,627	22,170	14,804	568	6,798
Incorporated	13,665	8,625	3,730	1,310	13,996	8,815	3,806	1,375
Centralia	7,594	4,646	2,356	592	7,734	4,700	2,405	629
Chehalis	3,139	2,023	1,090	26	3,137	2,017	1,091	29
Morton	506	365	68	73	530	385	68	77
Mossyrock	323	144	26	153	330	150	26	154
Napavine	697	496	60	141	729	512	72	145
Pe Ell	283	204	15	64	284	204	15	65
Toledo	302	188	58	56	308	196	57	55
Vader	256	149	4	103	269	154	5	110
Winlock	565	410	53	102	675	497	67	111
Lincoln	5,732	4,123	207	1,402	5,900	4,249	215	1,436
Unincorporated	3,121	2,129	15	977	3,273	2,246	22	1,005
Incorporated	2,611	1,994	192	425	2,627	2,003	193	431
Almira	151	133	0	18	151	133	0	18
Creston	119	76	7	36	122	76	7	39
Davenport	744	508	115	121	748	509	115	124
Harrington	211	161	16	34	211	161	16	34
Odessa	441	404	4	33	441	404	4	33
Reardan	259	180	19	60	265	184	19	62
Sprague	230	170	4	56	233	172	4	57
Wilbur	456	362	27	67	456	364	28	64

Table 8. Housing units by structure type for cities, towns and counties: April 1, 2020, and April 1, 2022 *(continued)*

County Municipality	April 1, 2020, Structure Type				Estimated April 1, 2022, Structure Type			
	Total	1 Unit	2+ Units	MH/TR/Spec	Total	1 Unit	2+ Units	MH/TR/Spec
Mason	33,269	23,496	1,400	8,373	33,749	23,833	1,421	8,495
Unincorporated	29,382	20,819	591	7,972	29,838	21,140	608	8,090
Incorporated	3,887	2,677	809	401	3,911	2,693	813	405
Shelton	3,887	2,677	809	401	3,911	2,693	813	405
Okanogan	21,720	14,945	1,709	5,066	22,097	15,224	1,768	5,105
Unincorporated	14,315	10,043	300	3,972	14,565	10,251	303	4,011
Incorporated	7,405	4,902	1,409	1,094	7,532	4,973	1,465	1,094
Brewster	715	370	219	126	719	381	221	117
Conconully	179	129	5	45	179	129	5	45
Coulee Dam (part)	433	380	48	5	432	379	48	5
Elmer City	122	74	15	33	125	76	16	33
Nespelem	76	33	2	41	76	33	2	41
Okanogan	1,063	744	165	154	1,074	750	165	159
Omak	2,222	1,496	498	228	2,272	1,498	546	228
Oroville	820	548	183	89	825	549	183	93
Pateros	250	190	16	44	250	190	16	44
Riverside	152	87	0	65	151	86	0	65
Tonasket	520	317	130	73	517	316	130	71
Twisp	511	307	76	128	534	330	76	128
Winthrop	342	227	52	63	378	256	57	65
Pacific	16,034	10,826	1,135	4,073	16,278	10,999	1,153	4,126
Unincorporated	11,930	8,094	293	3,543	12,130	8,241	293	3,596
Incorporated	4,104	2,732	842	530	4,148	2,758	860	530
Ilwaco	615	452	92	71	623	460	92	71
Long Beach	1,386	850	345	191	1,412	861	361	190
Raymond	1,359	883	292	184	1,364	886	294	184
South Bend	744	547	113	84	749	551	113	85
Pend Oreille	7,938	5,490	405	2,043	8,086	5,606	407	2,073
Unincorporated	6,394	4,496	40	1,858	6,535	4,610	40	1,885
Incorporated	1,544	994	365	185	1,551	996	367	188
Cusick	92	75	2	15	93	76	2	15
Ione	226	147	19	60	226	147	19	60
Metaline	91	68	2	21	90	67	2	21
Metaline Falls	203	84	110	9	204	84	110	10
Newport	932	620	232	80	938	622	234	82
Pierce	359,489	240,325	92,200	26,964	368,760	245,238	96,230	27,292
Unincorporated	156,453	114,729	18,292	23,432	161,713	118,205	19,854	23,654
Incorporated	203,036	125,596	73,908	3,532	207,047	127,033	76,376	3,638
Auburn (part)	3,898	1,733	2,165	0	3,912	1,747	2,165	0
Bonney Lake	7,605	6,376	766	463	8,178	6,500	1,219	459
Buckley	1,956	1,589	280	87	2,071	1,703	281	87
Carbonado	244	220	0	24	246	222	0	24
DuPont	3,791	2,559	1,231	1	3,803	2,571	1,231	1
Eatonville	1,127	928	130	69	1,151	946	134	71
Edgewood	5,125	3,977	956	192	5,770	4,236	1,342	192
Enumclaw (part)	0	0	0	0	0	0	0	0
Fife	4,326	1,793	2,439	94	4,393	1,812	2,489	92
Fircrest	2,926	2,233	693	0	2,962	2,237	725	0
Gig Harbor	5,642	3,330	2,178	134	5,916	3,595	2,188	133
Lakewood	26,999	13,577	11,971	1,451	27,147	13,645	12,051	1,451
Milton (part)	2,963	1,731	1,184	48	2,969	1,735	1,186	48
Orting	2,999	2,679	151	169	3,016	2,696	151	169
Pacific (part)	19	12	0	7	19	12	0	7
Puyallup	18,106	10,642	7,316	148	18,270	10,788	7,335	147

Table 8. Housing units by structure type for cities, towns and counties: April 1, 2020, and April 1, 2022 *(continued)*

County Municipality	April 1, 2020, Structure Type				Estimated April 1, 2022, Structure Type			
	Total	1 Unit	2+ Units	MH/TR/Spec	Total	1 Unit	2+ Units	MH/TR/Spec
Pierce <i>continued</i>								
Roy	315	254	16	45	314	254	16	44
Ruston	517	417	100	0	521	421	100	0
South Prairie	149	131	0	18	261	131	0	130
Steilacoom	2,919	2,108	811	0	2,950	2,138	812	0
Sumner	4,492	2,532	1,701	259	4,575	2,595	1,721	259
Tacoma	92,309	57,630	34,460	219	93,658	57,864	35,575	219
University Place	14,427	8,976	5,360	91	14,764	9,017	5,655	92
Wilkeson	182	169	0	13	181	168	0	13
San Juan	13,772	11,369	987	1,416	14,070	11,587	1,053	1,430
Unincorporated	12,318	10,646	412	1,260	12,576	10,834	470	1,272
Incorporated	1,454	723	575	156	1,494	753	583	158
Friday Harbor	1,454	723	575	156	1,494	753	583	158
Skagit	55,744	40,583	8,556	6,605	56,628	40,985	8,969	6,674
Unincorporated	24,252	18,814	551	4,887	24,424	18,913	582	4,929
Incorporated	31,492	21,769	8,005	1,718	32,204	22,072	8,387	1,745
Anacortes	8,395	6,728	1,484	183	8,517	6,811	1,506	200
Burlington	3,645	2,120	1,440	85	3,965	2,117	1,764	84
Concrete	375	272	73	30	379	276	73	30
Hamilton	131	89	0	42	130	88	0	42
La Conner	556	408	128	20	565	409	136	20
Lyman	174	125	3	46	174	125	3	46
Mount Vernon	13,457	8,953	3,665	839	13,576	9,060	3,675	841
Sedro-Woolley	4,759	3,074	1,212	473	4,898	3,186	1,230	482
Skamania	5,794	3,928	374	1,492	6,014	4,099	388	1,527
Unincorporated	4,595	3,130	110	1,355	4,774	3,266	117	1,391
Incorporated	1,199	798	264	137	1,240	833	271	136
North Bonneville	452	276	98	78	456	280	98	78
Stevenson	747	522	166	59	784	553	173	58
Snohomish	321,523	211,762	90,200	19,561	331,191	215,915	95,698	19,578
Unincorporated	136,975	98,750	24,585	13,640	139,050	99,411	25,934	13,705
Incorporated	184,548	113,012	65,615	5,921	192,141	116,504	69,764	5,873
Arlington	7,751	4,741	2,417	593	8,468	4,759	3,107	602
Bothell (part)	7,456	5,048	1,612	796	7,722	5,133	1,797	792
Brier	2,413	2,352	32	29	2,427	2,366	32	29
Darrington	648	490	35	123	663	502	37	124
Edmonds	19,305	12,051	7,222	32	19,374	12,104	7,238	32
Everett	47,193	22,100	23,931	1,162	48,649	22,228	25,258	1,163
Gold Bar	892	576	28	288	849	586	28	235
Granite Falls	1,594	1,188	323	83	1,694	1,288	323	83
Index	100	97	0	3	100	97	0	3
Lake Stevens	12,367	10,106	1,869	392	14,417	11,696	2,328	393
Lynnwood	16,212	7,527	8,125	560	16,246	7,541	8,145	560
Marysville	25,723	19,065	5,446	1,212	26,439	19,684	5,544	1,211
Mill Creek	9,068	5,471	3,590	7	9,450	5,499	3,944	7
Monroe	6,228	4,487	1,658	83	6,634	4,651	1,903	80
Mountlake Terrace	9,202	5,488	3,612	102	9,673	5,501	4,068	104
Mukilteo	8,711	5,622	3,082	7	8,739	5,627	3,105	7
Snohomish	4,347	2,646	1,645	56	4,461	2,659	1,747	55
Stanwood	2,979	2,175	800	4	3,318	2,362	952	4
Sultan	1,883	1,306	188	389	2,337	1,740	208	389
Woodway	476	476	0	0	481	481	0	0

Table 8. Housing units by structure type for cities, towns and counties: April 1, 2020, and April 1, 2022 *(continued)*

County Municipality	April 1, 2020, Structure Type				Estimated April 1, 2022, Structure Type			
	Total	1 Unit	2+ Units	MH/TR/Spec	Total	1 Unit	2+ Units	MH/TR/Spec
Spokane	224,019	147,985	62,002	14,032	230,005	150,810	64,990	14,205
Unincorporated	61,193	45,289	6,309	9,595	63,122	46,796	6,731	9,595
Incorporated	162,826	102,696	55,693	4,437	166,883	104,014	58,259	4,610
Airway Heights	3,626	1,210	1,881	535	3,870	1,325	2,008	537
Cheney	5,354	1,908	3,314	132	5,504	1,934	3,437	133
Deer Park	1,901	1,319	410	172	2,031	1,418	438	175
Fairfield	228	175	9	44	235	178	9	48
Latah	88	79	0	9	88	79	0	9
Liberty Lake	4,916	3,202	1,582	132	5,280	3,478	1,670	132
Medical Lake	1,826	1,271	422	133	1,823	1,273	417	133
Millwood	821	686	121	14	842	688	140	14
Rockford	195	133	0	62	204	135	0	69
Spangle	127	85	0	42	127	85	0	42
Spokane	99,938	65,430	32,955	1,553	101,222	65,876	33,713	1,633
Spokane Valley	43,751	27,172	14,999	1,580	45,602	27,519	16,427	1,656
Waverly	55	26	0	29	55	26	0	29
Stevens	22,242	15,358	1,190	5,694	22,541	15,536	1,203	5,802
Unincorporated	17,624	12,328	189	5,107	17,874	12,471	189	5,214
Incorporated	4,618	3,030	1,001	587	4,667	3,065	1,014	588
Chewelah	1,220	788	235	197	1,252	806	243	203
Colville	2,278	1,487	586	205	2,277	1,486	590	201
Kettle Falls	770	512	172	86	777	522	173	82
Marcus	87	60	0	27	87	60	0	27
Northport	156	130	8	18	156	130	8	18
Springdale	107	53	0	54	118	61	0	57
Thurston	121,438	83,384	23,990	14,064	124,606	84,642	25,675	14,289
Unincorporated	57,584	43,384	3,377	10,823	57,345	43,253	3,222	10,870
Incorporated	63,854	40,000	20,613	3,241	67,261	41,389	22,453	3,419
Bucoda	241	199	2	40	244	196	2	46
Lacey	22,039	15,095	6,000	944	24,253	16,060	7,095	1,098
Olympia	25,642	14,319	10,553	770	26,204	14,409	11,007	788
Rainier	850	698	34	118	928	706	104	118
Tenino	780	544	83	153	846	609	83	154
Tumwater	10,847	6,527	3,223	1,097	11,310	6,776	3,438	1,096
Yelm	3,455	2,618	718	119	3,476	2,633	724	119
Wahkiakum	2,189	1,522	83	584	2,240	1,547	92	601
Unincorporated	1,881	1,308	2	571	1,931	1,332	11	588
Incorporated	308	214	81	13	309	215	81	13
Cathlamet	308	214	81	13	309	215	81	13
Walla Walla	24,971	17,214	5,038	2,719	25,379	17,407	5,229	2,743
Unincorporated	6,542	4,897	204	1,441	6,599	4,918	222	1,459
Incorporated	18,429	12,317	4,834	1,278	18,780	12,489	5,007	1,284
College Place	4,176	2,657	1,135	384	4,244	2,701	1,159	384
Prescott	152	51	2	99	152	51	2	99
Waitsburg	530	343	20	167	535	346	20	169
Walla Walla	13,571	9,266	3,677	628	13,849	9,391	3,826	632
Whatcom	100,064	62,407	27,092	10,565	102,640	63,363	28,625	10,652
Unincorporated	42,163	30,829	2,402	8,932	42,381	30,987	2,412	8,982
Incorporated	57,901	31,578	24,690	1,633	60,259	32,376	26,213	1,670
Bellingham	41,267	20,133	20,209	925	42,712	20,314	21,466	932
Blaine	2,744	1,911	777	56	2,866	1,996	811	59
Everson	996	665	253	78	1,070	728	261	81
Ferndale	5,553	3,762	1,403	388	5,966	4,057	1,499	410

Table 8. Housing units by structure type for cities, towns and counties: April 1, 2020, and April 1, 2022 *(continued)*

County Municipality	April 1, 2020, Structure Type				Estimated April 1, 2022, Structure Type			
	Total	1 Unit	2+ Units	MH/TR/Spec	Total	1 Unit	2+ Units	MH/TR/Spec
Whatcom continued								
Lynden	6,156	4,289	1,783	84	6,360	4,399	1,875	86
Nooksack	510	417	51	42	547	445	59	43
Sumas	675	401	214	60	738	437	242	59
Whitman	20,922	9,870	9,340	1,712	21,739	10,013	9,970	1,756
Unincorporated	2,754	2,321	39	394	2,754	2,308	40	406
Incorporated	18,168	7,549	9,301	1,318	18,985	7,705	9,930	1,350
Albion	283	128	14	141	281	129	14	138
Colfax	1,434	879	426	129	1,438	886	428	124
Colton	175	146	8	21	177	149	8	20
Endicott	164	133	0	31	164	133	0	31
Farmington	69	56	0	13	72	59	0	13
Garfield	278	178	37	63	279	179	37	63
LaCrosse	169	126	3	40	169	126	3	40
Lamont	40	28	0	12	40	28	0	12
Malden	101	88	0	13	75	34	0	41
Oakesdale	187	152	0	35	190	154	0	36
Palouse	513	384	30	99	522	396	30	96
Pullman	13,645	4,436	8,686	523	14,470	4,614	9,313	543
Rosalia	270	195	21	54	267	197	21	49
St. John	310	223	34	53	311	223	34	54
Tekoa	366	279	42	45	366	279	42	45
Uniontown	164	118	0	46	164	119	0	45
Yakima	90,504	59,004	17,797	13,703	92,315	59,724	18,792	13,799
Unincorporated	31,026	21,218	1,075	8,733	31,437	21,357	1,258	8,822
Incorporated	59,478	37,786	16,722	4,970	60,878	38,367	17,534	4,977
Grandview	3,275	2,200	593	482	3,316	2,238	597	481
Granger	946	553	185	208	987	585	192	210
Harrah	188	110	21	57	187	109	21	57
Mabton	558	374	85	99	563	377	85	101
Moxee	1,360	1,164	133	63	1,507	1,300	145	62
Naches	393	268	72	53	413	272	88	53
Selah	3,072	2,224	816	32	3,194	2,319	843	32
Sunnyside	4,845	2,893	1,266	686	4,901	2,933	1,282	686
Tieton	452	274	59	119	522	291	112	119
Toppenish	2,453	1,712	612	129	2,461	1,711	622	128
Union Gap	2,275	1,304	203	768	2,318	1,306	214	798
Wapato	1,322	949	290	83	1,326	951	291	84
Yakima	37,192	22,958	12,162	2,072	38,028	23,169	12,811	2,048
Zillah	1,147	803	225	119	1,155	806	231	118
State	3,202,239	2,025,337	921,891	255,011	3,295,162	2,061,634	975,374	258,154
Unincorporated	1,085,567	808,278	90,055	187,234	1,106,968	822,351	95,298	189,319
Incorporated	2,116,672	1,217,059	831,836	67,777	2,188,194	1,239,283	880,076	68,835

- Notes:
- The 2020 counts for total housing units represent federal census counts, special city census counts or OFM adjusted counts that control for annexations from Jan. 2, 2020, through April 1, 2020.
 - Estimates of housing units by structure type for 2020 are developed using an allocation procedure based on Census 2000 Summary File 1 data, housing completion data reported by cities and counties (2000–19), annexation census data (2000–19) and Census 2000 Summary File 3 data. The resulting 2020 estimates maintain the 2020 census counts of total housing units, occupied housing units and population in housing units.
 - Housing unit estimates (post-2020) are developed using housing completion data reported by cities and counties and annexation census data.
 - Housing unit estimates (post-2020) are revised in cases where more accurate data become available.
 - Abbreviation: MH/TR/Spec – mobile homes, trailers and special housing.

Table 9. Annexations, incorporations and other municipal boundary changes approved by OFM

	Boundary Changes: April 2, 2020 – April 1, 2022					Boundary Changes: April 2, 2021 – April 1, 2022				
County Municipality	Annex. Parcels	Area (sq mi)	Housing Units Total	Units Occ.	Pop. Total	Annex. Parcels	Area (sq mi)	Housing Units Total	Units Occ.	Pop. Total
Adams	2	0.449	3	3	7	1	0.448	0	0	0
Hatton	0	0	0	0	0	0	0	0	0	0
Lind	0	0	0	0	0	0	0	0	0	0
Othello	0	0	0	0	0	0	0	0	0	0
Ritzville	2	0.449	3	3	7	1	0.448	0	0	0
Washtucna	0	0	0	0	0	0	0	0	0	0
Asotin	0	0	0	0	0	0	0	0	0	0
Asotin	0	0	0	0	0	0	0	0	0	0
Clarkston	0	0	0	0	0	0	0	0	0	0
Benton	8	1.255	12	8	23	6	0.805	11	8	23
Benton City	1	0.021	1	0	0	1	0.021	1	0	0
Kennewick	2	1.005	0	0	0	1	0.569	0	0	0
Prosser	2	0.09	4	4	15	2	0.09	4	4	15
Richland	3	0.139	7	4	8	2	0.125	6	4	8
West Richland	0	0	0	0	0	0	0	0	0	0
Chelan	7	0.042	11	9	30	5	0.033	10	8	25
Cashmere	0	0	0	0	0	0	0	0	0	0
Chelan	0	0	0	0	0	0	0	0	0	0
Entiat	0	0	0	0	0	0	0	0	0	0
Leavenworth	0	0	0	0	0	0	0	0	0	0
Wenatchee	7	0.042	11	9	30	5	0.033	10	8	25
Clallam	0	0	0	0	0	0	0	0	0	0
Forks	0	0	0	0	0	0	0	0	0	0
Port Angeles	0	0	0	0	0	0	0	0	0	0
Sequim	0	0	0	0	0	0	0	0	0	0
Clark	8	0.229	10	8	15	5	0.211	9	7	13
Battle Ground	2	0.125	4	4	8	1	0.123	3	3	6
Camas	1	0.025	1	1	1	1	0.025	1	1	1
La Center	2	0.039	1	0	0	1	0.031	1	0	0
Ridgefield	1	0.031	3	3	6	1	0.031	3	3	6
Vancouver	2	0.009	1	0	0	1	0.001	1	0	0
Washougal	0	0	0	0	0	0	0	0	0	0
Woodland <i>part</i>	0	0	0	0	0	0	0	0	0	0
Yacolt	0	0	0	0	0	0	0	0	0	0
Columbia	0	0	0	0	0	0	0	0	0	0
Dayton	0	0	0	0	0	0	0	0	0	0
Starbuck	0	0	0	0	0	0	0	0	0	0
Cowlitz	1	0.001	0	0	0	0	0	0	0	0
Castle Rock	0	0	0	0	0	0	0	0	0	0
Kalama	1	0.001	0	0	0	0	0	0	0	0
Kelso	0	0	0	0	0	0	0	0	0	0
Longview	0	0	0	0	0	0	0	0	0	0
Woodland <i>part</i>	0	0	0	0	0	0	0	0	0	0
Douglas	0	0	0	0	0	0	0	0	0	0
Bridgeport	0	0	0	0	0	0	0	0	0	0
Coulee Dam <i>part</i>	0	0	0	0	0	0	0	0	0	0
East Wenatchee	0	0	0	0	0	0	0	0	0	0
Mansfield	0	0	0	0	0	0	0	0	0	0
Rock Island	0	0	0	0	0	0	0	0	0	0
Waterville	0	0	0	0	0	0	0	0	0	0

Table 9. Annexations, incorporations and other municipal boundary changes approved by OFM (continued)

[illegible]

Table 9. Annexations, incorporations and other municipal boundary changes approved by OFM (continued)

[illegible]

Table 9. Annexations, incorporations and other municipal boundary changes approved by OFM *(continued)*

County Municipality	Boundary Changes: April 2, 2020 – April 1, 2022					Boundary Changes: April 2, 2021 – April 1, 2022				
	Annex. Parcels	Area (sq mi)	Housing Units Total	Pop. Occ.	Pop. Total	Annex. Parcels	Area (sq mi)	Housing Units Total	Pop. Occ.	Pop. Total
Lewis <i>continued</i>										
Pe Ell	0	0	0	0	0	0	0	0	0	0
Toledo	0	0	0	0	0	0	0	0	0	0
Vader	0	0	0	0	0	0	0	0	0	0
Winlock	0	0	0	0	0	0	0	0	0	0
Lincoln	0	0	0	0	0	0	0	0	0	0
Almira	0	0	0	0	0	0	0	0	0	0
Creston	0	0	0	0	0	0	0	0	0	0
Davenport	0	0	0	0	0	0	0	0	0	0
Harrington	0	0	0	0	0	0	0	0	0	0
Odessa	0	0	0	0	0	0	0	0	0	0
Reardan	0	0	0	0	0	0	0	0	0	0
Sprague	0	0	0	0	0	0	0	0	0	0
Wilbur	0	0	0	0	0	0	0	0	0	0
Mason	0	0	0	0	0	0	0	0	0	0
Shelton	0	0	0	0	0	0	0	0	0	0
Okanogan	3	0.033	5	3	7	2	0.005	4	3	7
Brewster	0	0	0	0	0	0	0	0	0	0
Conconully	0	0	0	0	0	0	0	0	0	0
Coulee Dam <i>part</i>	0	0	0	0	0	0	0	0	0	0
Elmer City	0	0	0	0	0	0	0	0	0	0
Nespelem	0	0	0	0	0	0	0	0	0	0
Okanogan	1	0.002	1	1	2	1	0.002	1	1	2
Omak	0	0	0	0	0	0	0	0	0	0
Oroville	0	0	0	0	0	0	0	0	0	0
Pateros	0	0	0	0	0	0	0	0	0	0
Riverside	0	0	0	0	0	0	0	0	0	0
Tonasket	0	0	0	0	0	0	0	0	0	0
Twisp	0	0	0	0	0	0	0	0	0	0
Winthrop	2	0.031	4	2	5	1	0.003	3	2	5
Pacific	1	0.092	0	0	0	1	0.092	0	0	0
Ilwaco	0	0	0	0	0	0	0	0	0	0
Long Beach	0	0	0	0	0	0	0	0	0	0
Raymond	1	0.092	0	0	0	1	0.092	0	0	0
South Bend	0	0	0	0	0	0	0	0	0	0
Pend Oreille	1	0.008	0	0	0	1	0.008	0	0	0
Cusick	0	0	0	0	0	0	0	0	0	0
Ione	0	0	0	0	0	0	0	0	0	0
Metaline	0	0	0	0	0	0	0	0	0	0
Metaline Falls	0	0	0	0	0	0	0	0	0	0
Newport	1	0.008	0	0	0	1	0.008	0	0	0
Pierce	9	0.508	21	21	41	1	0.209	21	21	41
Auburn <i>part</i>	0	0	0	0	0	0	0	0	0	0
Bonney Lake	0	0	0	0	0	0	0	0	0	0
Buckley	1	0.002	0	0	0	0	0	0	0	0
Carbonado	0	0	0	0	0	0	0	0	0	0
DuPont	0	0	0	0	0	0	0	0	0	0
Eatonville	0	0	0	0	0	0	0	0	0	0
Edgewood	0	0	0	0	0	0	0	0	0	0
Enumclaw <i>part</i>	0	0	0	0	0	0	0	0	0	0
Fife	3	0.003	0	0	0	0	0	0	0	0

Table 9. Annexations, incorporations and other municipal boundary changes approved by OFM (continued)

[illegible]

Table 9. Annexations, incorporations and other municipal boundary changes approved by OFM (continued)

	Boundary Changes: April 2, 2020 – April 1, 2022					Boundary Changes: April 2, 2021 – April 1, 2022				
County Municipality	Annex. Parcels	Area (sq mi)	Housing Units Total	Units Occ.	Pop. Total	Annex. Parcels	Area (sq mi)	Housing Units Total	Units Occ.	Pop. Total
Spokane	1	0.095	0	0	0	1	0.095	0	0	0
Airway Heights	0	0	0	0	0	0	0	0	0	0
Cheney	0	0	0	0	0	0	0	0	0	0
Deer Park	0	0	0	0	0	0	0	0	0	0
Fairfield	0	0	0	0	0	0	0	0	0	0
Latah	0	0	0	0	0	0	0	0	0	0
Liberty Lake	1	0.095	0	0	0	1	0.095	0	0	0
Medical Lake	0	0	0	0	0	0	0	0	0	0
Millwood	0	0	0	0	0	0	0	0	0	0
Rockford	0	0	0	0	0	0	0	0	0	0
Spangle	0	0	0	0	0	0	0	0	0	0
Spokane	0	0	0	0	0	0	0	0	0	0
Spokane Valley	0	0	0	0	0	0	0	0	0	0
Waverly	0	0	0	0	0	0	0	0	0	0
Stevens	3	0.025	5	4	9	1	0.001	0	0	0
Chewelah	0	0	0	0	0	0	0	0	0	0
Colville	0	0	0	0	0	0	0	0	0	0
Kettle Falls	3	0.025	5	4	9	1	0.001	0	0	0
Marcus	0	0	0	0	0	0	0	0	0	0
Northport	0	0	0	0	0	0	0	0	0	0
Springdale	0	0	0	0	0	0	0	0	0	0
Thurston	5	1.225	1029	994	2518	3	1.106	1025	992	2513
Bucoda	0	0	0	0	0	0	0	0	0	0
Lacey	5	1.225	1029	994	2518	3	1.106	1025	992	2513
Olympia	0	0	0	0	0	0	0	0	0	0
Rainier	0	0	0	0	0	0	0	0	0	0
Tenino	0	0	0	0	0	0	0	0	0	0
Tumwater	0	0	0	0	0	0	0	0	0	0
Yelm	0	0	0	0	0	0	0	0	0	0
Wahkiakum	0	0	0	0	0	0	0	0	0	0
Cathlamet	0	0	0	0	0	0	0	0	0	0
Walla Walla	4	0.144	0	0	0	0	0	0	0	0
College Place	4	0.144	0	0	0	0	0	0	0	0
Prescott	0	0	0	0	0	0	0	0	0	0
Waitsburg	0	0	0	0	0	0	0	0	0	0
Walla Walla	11	0.172	39	37	123	6	0.041	14	13	35
Whatcom	1	0.161	22	22	59	1	0.161	22	22	59
Bellingham	0	0	0	0	0	0	0	0	0	0
Blaine	0	0	0	0	0	0	0	0	0	0
Everson	1	0.161	22	22	59	1	0.161	22	22	59
Ferndale	0	0	0	0	0	0	0	0	0	0
Lynden	0	0	0	0	0	0	0	0	0	0
Nooksack	0	0	0	0	0	0	0	0	0	0
Sumas	0	0	0	0	0	0	0	0	0	0
Whitman	1	0.186	1	1	4	1	0.186	1	1	4
Albion	0	0	0	0	0	0	0	0	0	0
Colfax	0	0	0	0	0	0	0	0	0	0
Colton	0	0	0	0	0	0	0	0	0	0
Endicott	0	0	0	0	0	0	0	0	0	0
Farmington	0	0	0	0	0	0	0	0	0	0
Garfield	0	0	0	0	0	0	0	0	0	0

Table 9. Annexations, incorporations and other municipal boundary changes approved by OFM (*continued*)

	Boundary Changes: April 2, 2020 – April 1, 2022					Boundary Changes: April 2, 2021 – April 1, 2022				
County Municipality	Annex. Parcels	Area (sq mi)	Housing Units		Pop. Total	Annex. Parcels	Area (sq mi)	Housing Units		Pop. Total
			Total	Occ.				Total	Occ.	
Whitman continued										
LaCrosse	0	0	0	0	0	0	0	0	0	0
Lamont	0	0	0	0	0	0	0	0	0	0
Malden	0	0	0	0	0	0	0	0	0	0
Oakesdale	0	0	0	0	0	0	0	0	0	0
Palouse	0	0	0	0	0	0	0	0	0	0
Pullman	1	0.186	1	1	4	1	0.186	1	1	4
Rosalia	0	0	0	0	0	0	0	0	0	0
St. John	0	0	0	0	0	0	0	0	0	0
Tekoa	0	0	0	0	0	0	0	0	0	0
Uniontown	0	0	0	0	0	0	0	0	0	0
Yakima	3	0.051	1	0	0	1	0.03	0	0	0
Grandview	1	0.03	0	0	0	1	0.03	0	0	0
Granger	0	0	0	0	0	0	0	0	0	0
Harrah	0	0	0	0	0	0	0	0	0	0
Mabton	1	0.016	0	0	0	0	0	0	0	0
Moxee	0	0	0	0	0	0	0	0	0	0
Naches	0	0	0	0	0	0	0	0	0	0
Selah	1	0.005	1	0	0	0	0	0	0	0
Sunnyside	0	0	0	0	0	0	0	0	0	0
Tieton	0	0	0	0	0	0	0	0	0	0
Toppenish	0	0	0	0	0	0	0	0	0	0
Union Gap	0	0	0	0	0	0	0	0	0	0
Wapato	0	0	0	0	0	0	0	0	0	0
Yakima	0	0	0	0	0	0	0	0	0	0
Zillah	0	0	0	0	0	0	0	0	0	0
Washington	93	9.63	2547	2445	6665	51	7.352	2244	2168	5849

- Notes:
- All boundary changes are due to annexation, deannexation, boundary line adjustment or incorporation. Unless otherwise noted, the source is annexation (annexation, deannexation, boundary line adjustment), not incorporation.
 - "Annex. Parcels" refers to the number of noncontiguous areas annexed. Noncontiguous areas can be annexed under a single ordinance.
 - "Area" can sometimes be negative due to deannexation or boundary line adjustment.
 - Areas less than 0.0005 square miles are shown as 0.000 square miles.
 - Abbreviations: Annex. – annexation" sq mi – square miles; Occ. – occupied; Pop. – population

Table 10. Population age 65 years and over by county

County	Census 2010	2011	2012	2013	2014	2015	Estimate 2016	2017	2018	2019	2020	2021	2022	Percent of 2022 Pop.
Washington	827,677	852,414	895,631	939,494	982,838	1,027,655	1,073,339	1,121,334	1,173,705	1,226,458	1,295,912	1,344,154	1,391,445	17.69
Adams	1,915	1,883	2,147	1,936	1,957	1,989	2,035	2,096	2,199	2,257	2,690	2,775	2,857	13.54
Asotin	4,172	4,214	4,329	4,449	4,600	4,687	4,835	5,028	5,137	5,303	5,630	5,862	6,091	26.95
Benton	20,586	21,166	22,219	23,531	24,767	26,060	27,171	28,789	30,371	31,803	33,680	35,059	36,421	17.16
Chelan	11,175	11,429	11,887	12,395	12,874	13,433	13,960	14,619	15,267	15,934	16,837	17,493	18,138	22.49
Clallam	17,189	17,486	18,139	18,661	19,390	20,140	21,025	22,075	23,245	24,239	25,744	26,678	27,590	35.54
Clark	48,710	50,785	54,246	57,495	61,114	64,510	68,013	71,834	76,035	80,067	85,491	89,173	92,827	17.82
Columbia	937	933	941	1,014	1,047	1,067	1,107	1,120	1,161	1,180	1,173	1,195	1,215	30.76
Cowlitz	15,805	16,249	17,207	17,791	18,376	19,014	19,652	20,455	21,238	22,070	23,619	24,357	25,068	22.31
Douglas	5,443	5,536	5,604	5,980	6,247	6,604	6,861	7,132	7,379	7,685	7,939	8,271	8,600	19.55
Ferry	1,428	1,457	1,337	1,615	1,680	1,761	1,892	2,007	2,121	2,216	2,028	2,114	2,199	30.12
Franklin	5,696	5,928	6,158	6,579	6,855	7,244	7,628	7,958	8,477	9,038	9,590	9,974	10,352	10.38
Garfield	506	505	542	505	530	544	561	578	582	610	736	737	736	32.00
Grant	10,531	10,686	10,879	11,314	11,686	12,024	12,422	12,906	13,387	13,981	14,608	15,170	15,722	15.44
Grays Harbor	11,849	12,027	12,387	12,834	13,317	13,855	14,381	15,161	15,913	16,781	17,779	18,545	19,305	25.27
Island	14,439	14,948	15,836	16,672	17,601	18,506	19,442	20,512	21,645	22,632	23,913	25,027	26,141	29.81
Jefferson	7,842	8,101	8,437	9,041	9,483	10,078	10,675	11,275	11,950	12,494	12,946	13,577	14,210	42.61
King	210,679	217,675	229,899	240,120	250,603	260,883	270,913	279,486	289,215	299,374	315,413	324,428	333,031	14.37
Kitsap	33,296	34,468	36,456	38,343	40,417	42,492	44,747	46,990	49,250	51,837	54,811	57,196	59,565	21.21
Kittitas	5,212	5,383	5,696	5,958	6,167	6,506	6,931	7,301	7,697	8,079	8,577	8,992	9,408	19.93
Klickitat	3,625	3,768	3,817	4,173	4,367	4,534	4,799	5,012	5,188	5,425	5,570	5,808	6,044	26.11
Lewis	13,076	13,252	13,844	14,099	14,745	15,350	15,932	16,642	17,246	18,064	19,127	19,754	20,361	24.41
Lincoln	2,197	2,226	2,362	2,345	2,435	2,532	2,588	2,652	2,732	2,886	3,151	3,276	3,399	30.76
Mason	11,112	11,412	11,715	12,349	12,807	13,270	13,894	14,482	15,182	15,938	16,416	17,213	18,012	27.21
Okanogan	7,070	7,180	7,641	7,876	8,102	8,418	8,633	8,882	9,252	9,670	10,331	10,758	11,180	26.18
Pacific	5,183	5,196	5,637	5,561	5,694	5,853	6,080	6,413	6,722	7,168	7,993	8,363	8,732	37.00
Pend Oreille	2,485	2,572	2,621	2,847	2,982	3,104	3,211	3,392	3,565	3,727	3,791	3,965	4,139	30.38
Pierce	87,785	90,251	94,479	99,622	104,418	109,356	114,235	119,326	125,306	130,990	138,073	143,528	148,899	15.88
San Juan	3,657	3,837	4,070	4,346	4,630	4,911	5,130	5,405	5,689	5,955	6,253	6,573	6,895	37.99
Skagit	18,876	19,452	20,305	21,288	22,186	23,384	24,459	25,799	27,194	28,497	30,294	31,454	32,593	24.83
Skamania	1,596	1,659	1,538	1,849	1,953	2,022	2,132	2,266	2,384	2,532	2,311	2,413	2,515	21.13
Snohomish	73,544	76,581	80,862	86,315	90,721	95,425	100,466	105,951	111,599	116,950	123,756	128,898	133,984	15.81
Spokane	60,969	62,213	65,724	68,026	70,990	74,210	77,370	81,149	85,234	89,393	96,010	99,720	103,365	18.77
Stevens	7,516	7,739	7,626	8,540	8,969	9,324	9,746	10,195	10,677	11,185	10,743	11,304	11,870	25.23
Thurston	32,764	33,810	35,610	37,936	39,879	42,261	44,784	47,479	50,277	53,116	56,244	58,569	60,867	20.26
Wahkiakum	1,015	1,053	1,089	1,174	1,209	1,242	1,271	1,303	1,355	1,433	1,505	1,567	1,628	35.98
Walla Walla	8,778	8,943	9,231	9,504	9,830	10,148	10,414	10,846	11,328	11,863	12,626	13,080	13,523	21.59
Whatcom	26,640	27,503	29,037	30,375	32,082	33,633	35,634	37,494	39,665	41,807	44,061	45,723	47,352	20.44
Whitman	4,257	4,268	4,432	4,496	4,616	4,743	4,854	5,001	5,154	5,360	5,697	5,849	5,993	12.54
Yakima	28,122	28,640	29,645	30,540	31,512	32,538	33,456	34,323	35,687	36,919	38,756	39,716	40,618	15.63

- Notes:
- The county-level population estimates of the 65 and over population are based on a method that uses decennial census, Medicare and Medicaid data. These figures will not match the 65 and over population found in OFM's estimates of population by age, sex and race which are produced using a different methodology.
 - Totals may not add due to rounding.

Table 11. Intercensal estimates of population by county: April 1, 2010, to April 1, 2020

County	Census 2010	Estimate 2011	Estimate 2012	Estimate 2013	Estimate 2014	Estimate 2015	Estimate 2016	Estimate 2017	Estimate 2018	Estimate 2019	Census 2020
Washington	6,724,540	6,781,477	6,835,249	6,909,445	7,005,209	7,106,620	7,237,219	7,344,073	7,463,479	7,581,818	7,706,310
Adams	18,728	18,849	19,013	19,172	19,309	19,451	19,643	20,068	20,200	20,335	20,613
Asotin	21,623	21,667	21,680	21,725	21,790	21,889	22,003	22,047	22,112	22,182	22,285
Benton	175,177	177,675	180,115	183,504	186,954	189,520	191,531	194,724	198,731	202,822	206,873
Chelan	72,453	72,833	73,166	73,391	74,405	74,873	75,500	76,338	77,465	77,944	79,141
Clallam	71,404	71,810	72,383	72,771	73,104	73,482	74,160	74,873	75,513	76,439	77,155
Clark	425,363	428,626	432,320	437,014	444,450	452,534	461,869	472,481	480,952	490,693	503,311
Columbia	4,078	4,069	4,039	4,037	4,003	4,007	3,990	3,979	3,970	3,962	3,952
Cowlitz	102,410	102,730	103,097	103,470	104,043	104,702	105,419	106,469	107,782	109,315	110,730
Douglas	38,431	38,676	38,968	39,269	39,557	40,008	40,533	41,042	41,570	42,151	42,938
Ferry	7,551	7,514	7,477	7,449	7,404	7,354	7,319	7,283	7,234	7,209	7,178
Franklin	78,163	80,493	82,484	84,251	86,544	87,053	88,515	90,036	92,626	94,734	96,749
Garfield	2,266	2,266	2,260	2,260	2,252	2,280	2,266	2,263	2,269	2,278	2,286
Grant	89,120	89,768	90,404	91,166	91,862	92,722	93,434	94,289	96,214	97,734	99,123
Grays Harbor	72,797	72,885	73,142	73,272	73,499	73,474	73,662	73,910	74,407	75,145	75,636
Island	78,506	82,783	83,515	83,560	80,810	81,684	82,759	84,125	85,072	85,847	86,857
Jefferson	29,872	30,184	30,424	30,592	30,983	31,266	31,705	32,000	32,315	32,683	32,977
King	1,931,249	1,945,686	1,956,755	1,983,550	2,021,027	2,061,981	2,118,958	2,149,910	2,187,460	2,227,755	2,269,675
Kitsap	251,133	250,422	252,907	253,217	255,971	259,034	263,471	265,268	269,280	272,342	275,611
Kittitas	40,915	41,271	41,410	41,444	42,088	42,381	43,263	43,919	44,395	45,180	46,468
Klickitat	20,318	20,530	20,677	20,805	21,031	21,210	21,496	21,804	22,087	22,443	22,735
Lewis	75,455	76,299	76,765	76,966	77,563	78,006	78,556	79,477	80,250	81,151	82,149
Lincoln	10,570	10,598	10,612	10,576	10,569	10,610	10,636	10,694	10,769	10,850	10,876
Mason	60,699	61,235	61,611	61,956	62,366	62,545	63,125	63,889	64,658	65,082	65,726
Okanogan	41,120	41,274	41,324	41,396	41,547	41,625	41,795	41,838	41,928	41,996	42,104
Pacific	20,920	21,123	21,351	21,563	21,771	21,981	22,236	22,479	22,738	22,958	23,365
Pend Oreille	13,001	13,063	13,107	13,111	13,141	13,150	13,180	13,228	13,267	13,326	13,401
Pierce	795,225	806,190	814,214	823,032	834,544	845,324	862,608	877,920	891,661	905,841	920,393
San Juan	15,769	15,946	16,056	16,238	16,422	16,571	16,775	16,932	17,209	17,488	17,788
Skagit	116,901	117,617	118,331	119,219	120,197	121,166	122,465	123,727	125,895	128,037	129,523
Skamania	11,066	11,095	11,152	11,166	11,191	11,209	11,256	11,331	11,412	11,517	11,604
Snohomish	713,335	718,874	725,545	735,288	746,184	760,430	773,899	787,096	801,223	814,419	827,957
Spokane	471,221	474,439	478,381	484,161	489,986	495,986	502,706	511,653	522,337	531,191	539,339
Stevens	43,531	43,781	43,976	44,135	44,485	44,729	44,908	45,161	45,592	46,111	46,445
Thurston	252,264	254,999	258,517	262,682	267,616	271,409	276,016	280,399	285,842	289,597	294,793
Wahkiakum	3,978	4,018	4,050	4,053	4,099	4,128	4,179	4,227	4,293	4,373	4,422
Walla Walla	58,781	58,871	59,309	59,640	60,459	61,036	61,045	61,428	61,663	62,117	62,584
Whatcom	201,140	202,277	203,683	206,021	207,937	210,116	212,669	216,113	220,057	223,930	226,847
Whitman	44,776	44,488	45,424	45,498	45,817	46,380	46,623	46,961	47,217	47,871	47,973
Yakima	243,231	244,553	245,605	246,825	248,229	249,314	251,046	252,692	253,814	254,770	256,728

Notes: • Intercensal estimate series produced July 26, 2022.

Part 3

Supplemental population information

Additional information about the development of annual population estimates can be found in this chapter. The information includes state statutes related to the Office of Financial Management's official April 1 population determinations, the Small Area Estimate Program, how to access OFM population data products, State Data Center and Business and Industry Data Center contacts, and acknowledgment of the organizations that provide OFM with data.

Washington statutes related to the population estimates program

Population estimates for the state, counties, cities and towns and their use are governed by a number of statutes:

RCW 43.41.110: Assigns OFM duties related to population and annexation.

RCW 43.62.030: Requires annual estimates as of April 1 of each year for cities and towns. Used for allocation of specific funds the following Jan. 1. Only persons meeting resident criteria are to be included in the population estimates.

RCW 43.62.035: Requires annual estimates as of April 1 of each year for all counties. Used for allocation of specific funds in July of the same year.

RCW 43.62.040: Requires agencies, cities, towns and counties to furnish OFM whatever aid is needed in performance of its population studies. OFM's population determinations are final and conclusive.

Population estimates development

Population estimates represent the resident population as defined by the U.S. Census Bureau. This includes persons in housing units, military personnel and their dependents, persons living in correctional institutions and persons living in residential care facilities. College students are considered residents of the place where they live while attending school. Seasonal populations, such as vacationers or migrant farmworkers, are counted at their usual place of residence. Persons with no usual place of residence are counted where they are located on April 1.

The estimates are developed as accurately as possible from standard and tested methods. The specific procedures used to develop estimates depend on the availability of state and local area data.

State estimates are developed by a component method. The *component method* uses three basic demographic indicators — births, deaths and migration — to produce population estimates. The population change is the result of subtracting deaths and then adding births and migration to the base year population. Vital statistics data are obtained from the Washington State Department of Health. The migration estimate is based on administrative data sets such as school enrollment and tax filers' data which reflect the mobility of the population.

County populations are developed by three methods: the component method, ratio correlation and the housing unit method. *Ratio correlation* relates change in the county's share of the state population over a specific 10-year period to changes in the county's share of a set of symptomatic data over the same time period. The current equation contains school enrollment, voter registrations, auto

registrations, housing, births and deaths to persons age 65 or over. Changes in the symptomatic data are then tracked annually through the current decade to estimate population. The *housing unit method* estimates population on the basis of housing change and assumptions about occupancy rates and average household size.

City/town populations include both estimates and actual counts. A small number of cities/towns census their entire population each year. The housing unit method is used by OFM to prepare population estimates for the remaining cities. City population estimates are determined based on changes in the housing stock and counts of persons residing in group quarters facilities. The household population is estimated based on knowledge of housing unit change since the last census, occupancy rates and average household size. The population residing in group quarters facilities and from recent annexations is subsequently added to the estimate of household population to derive the final estimate. The reliability of the housing unit estimation method depends on accurately determining changes to the housing stock, the occupancy rate and average household size.

Small area estimates program

OFM's annual city and county population determinations satisfy a variety of needs related to planning and program administration. However, population and housing estimates are frequently required for areas that do not coincide with city or county boundaries. The Small Area Estimate Program was developed to produce population and housing estimates for such areas while maintaining as much consistency as possible with OFM's city and county estimates.

The SAEP produces a consistent set of small area population and housing data for statewide applications. SAEP estimates are generated for census areas, "special areas" that are statutorily required and other areas of statewide significance. Small areas are defined as geographic areas below the level of the state that may be coincident with the boundaries of U.S. Census Bureau geographic entities.

SAEP estimates are not the official state population estimates used for revenue distribution and program administration for cities/towns and counties. Although city/town and county population totals from the state's official population estimates program serve as control numbers, the SAEP targets different geographic areas and therefore has different data and methodological requirements.

The SAEP takes OFM's official April 1 city/town and county population and housing estimates and distributes these to census blocks based on a variety of information, including residential building permits, assessor records, postal delivery statistics and decennial census information.

The SAEP uses area-weighted and parcel point-weighted areal interpolation techniques to develop estimates for geographic areas that are not coincident with census blocks. This strategy takes advantage of more geographically precise information where it is available.

SAEP data products are summarized by geography and available in tabular and GIS shapefile format. Each SAEP data product contains information on the following demographic measures: total population, household population, group quarters population, total housing units and occupied housing units. Estimates for the following geographic areas are provided:

- census block groups
- census tracts
- census designated places
- congressional districts
- fire protection districts
- legislative districts

- public hospital districts
- Public Use Microdata Areas
- school districts
- selected islands
- tribal areas
- urban areas
- urban growth areas
- Water Resource Inventory Areas
- ZIP Code Tabulation Areas

Small area demographic estimates

OFM's Small Area Demographic Estimates model produces a consistent set of small area population estimates by the following characteristics: age, sex, race and ethnicity.

The SADE model uses using an Iterative Proportional Fitting procedure. IPF is a mathematical scaling procedure that converges the population estimates to constraining totals developed from multiple sources. To begin, an IPF procedure is executed to allocate census 2010 modified-age-race-sex data at the county level to census blocks. To move one year forward, IPF gradually adjusts the benchmark estimate through repeated calculations to fit the various constraints. These constraints, also known as controls, are OFM's annual total population by census block, county-level population estimates by age and sex, and county-level estimates by race and ethnicity.

SADE estimates use the characteristic proportions from the 2010 Census MARS data. These proportions don't reflect aging or migration of the small area population, so SADE data shouldn't be used to examine trends in small geographic areas. We suggest using SADE data at geographies more or less on the same scale as census tracts, about 5,000 people per geography. Estimates for the following geographic areas are provided:

- census tract
- congressional district
- county
- legislative district
- school district
- state

There are three tables for each geography representing the total population, the Hispanic population and the non-Hispanic population. The data are tabulated by OMB 1997 race category, sex and five-year age groups.

Population data products

OFM produces a number of population data products. To find frequently requested population items, please see <https://www.ofm.wa.gov/sites/default/files/public/dataresearch/pop/key2pop.xlsx> or click on one of the links below. You can subscribe to GovDelivery to receive email or text notifications about updated OFM data products at https://public.govdelivery.com/accounts/WAGOV/subscriber/new?qsp=WAGOV_39.

Estimates:

- [age, sex and race and Hispanic origin](#)
- [official April 1 population estimates](#)
- [small areas](#)
- [special areas](#)

Projections:

- [age, sex and race and Hispanic origin](#)
- [Growth Management Act county projections](#)
- [state population forecast](#)

Other products:

- [American Community Survey](#)
- [annexations](#)
- [decennial census](#)
- [population density](#)
- [GIS data](#)

Washington State Data Center and Business and Industry Data Center

The Washington State Data Center and Business and Industry Data Center are federal-state cooperative programs sponsored by the U.S. Census Bureau. OFM is the agency responsible for administering these programs in Washington.

A list of the Washington SDC/BIDC coordinating agencies and affiliate members is provided below. These organizations and their contact persons play an important role in the dissemination of census information. Many of the larger participating universities, regional councils of governments and county planning agencies publish census information targeting the needs of local constituents. Many of these same organizations can also assist with data requests.

Lead agency

[Office of Financial Management](#)

U.S. Census Bureau

[Census Bureau Regional Office](#)

Coordinating agencies

[Central Washington University](#)
[Employment Security Department](#)
[Puget Sound Regional Council](#)
[University of Washington](#)
[Washington State Library](#)
[Washington State University](#)
[Western Washington University](#)

Affiliates

[Benton-Franklin Council of Governments](#)
[City of Bellevue](#)
[Chelan County](#)
[Clark County](#)
[Cowlitz-Wahkiakum Council of Governments](#)
[Eastern Washington University](#)
[Grant County Economic Development Council](#)
[Grays Harbor Council of Governments](#)
[Grays Harbor County](#)

King County Government
King County Library System
Seattle City Government
Seattle Public Library
Spokane Regional Transportation Council
Thurston Regional Planning Council
Tri-County Economic Development District
Washington State Department of Health
Whatcom Council of Governments
Yakima Valley Conference of Governments

Acknowledgments

OFM acknowledges the following entities for providing data and/or assistance in support of the population estimates program:

- Center for Health Statistics, Department of Health for supplying vital statistics data.
- Office of Research and Data Analysis, Department of Social and Health Services for providing institutional population counts.
- Department of Veterans Affairs for providing veteran institutional counts.
- Department of Licensing for providing driver's license and vehicle registration data.
- Office of Superintendent of Public Instruction for providing student enrollment counts.
- Employment Security Department for providing state employment data.
- Puget Sound Regional Council for providing building permit information.
- City and county planners/staff for providing building permit and other information used in the development of April 1 population estimates.
- Housing directors at colleges and universities for submitting April 1 dormitory counts.
- Armed forces personnel at major military installations for contributing data on resident military population counts.
- Municipal Research and Services Center for providing technical assistance/resources related to annexation and revenue distribution.
- Agency personnel in other states who provide reciprocal data on interstate movements.

