

A PORTION OF SEC 9, TWP 29 N, RGE 6 E, W.M. IN SNOHOMISH COUNTY, WA.

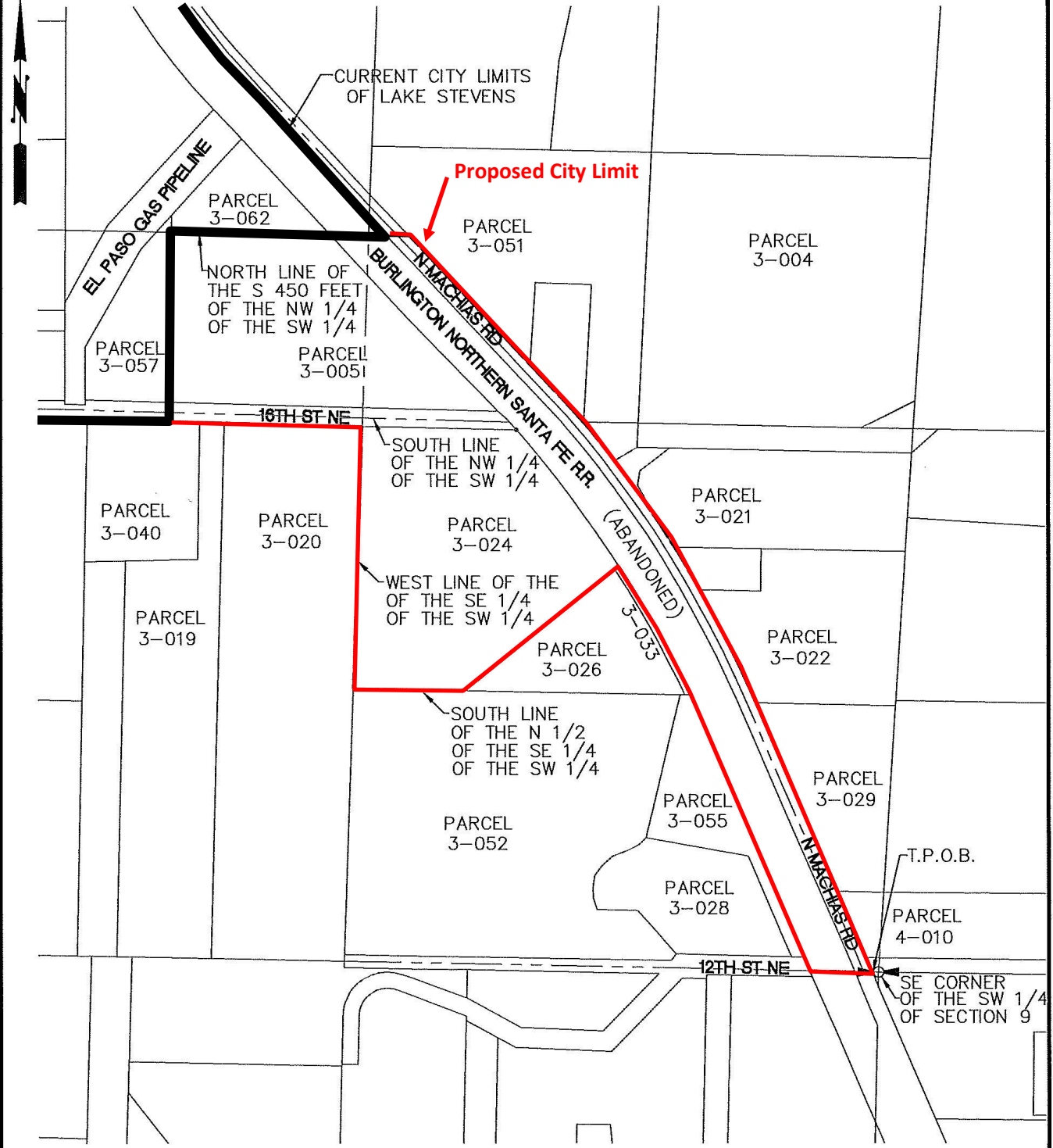



EXHIBIT "A"  
 CITY OF LAKE STEVENS  
 ANNEXATION  
 LEGAL DESCRIPTION

 **CHS ENGINEERS**  
 12507 Bel-Red RD., Suite 101,  
 Bellevue, WA 98005  
 www.chsengineers.com  
 Ph: 425-637-3693

Scale  
 1"=400'

Drawn by JPC Project # 371825  
 Checked by RL Date 03-12-19

Sheet  
 1 / 1