

# EXHIBIT B

IN THE SW 1/4 OF THE NW 1/4  
OF SECTION 2, T4N, R1E, W.M.  
CLARK COUNTY, WASHINGTON

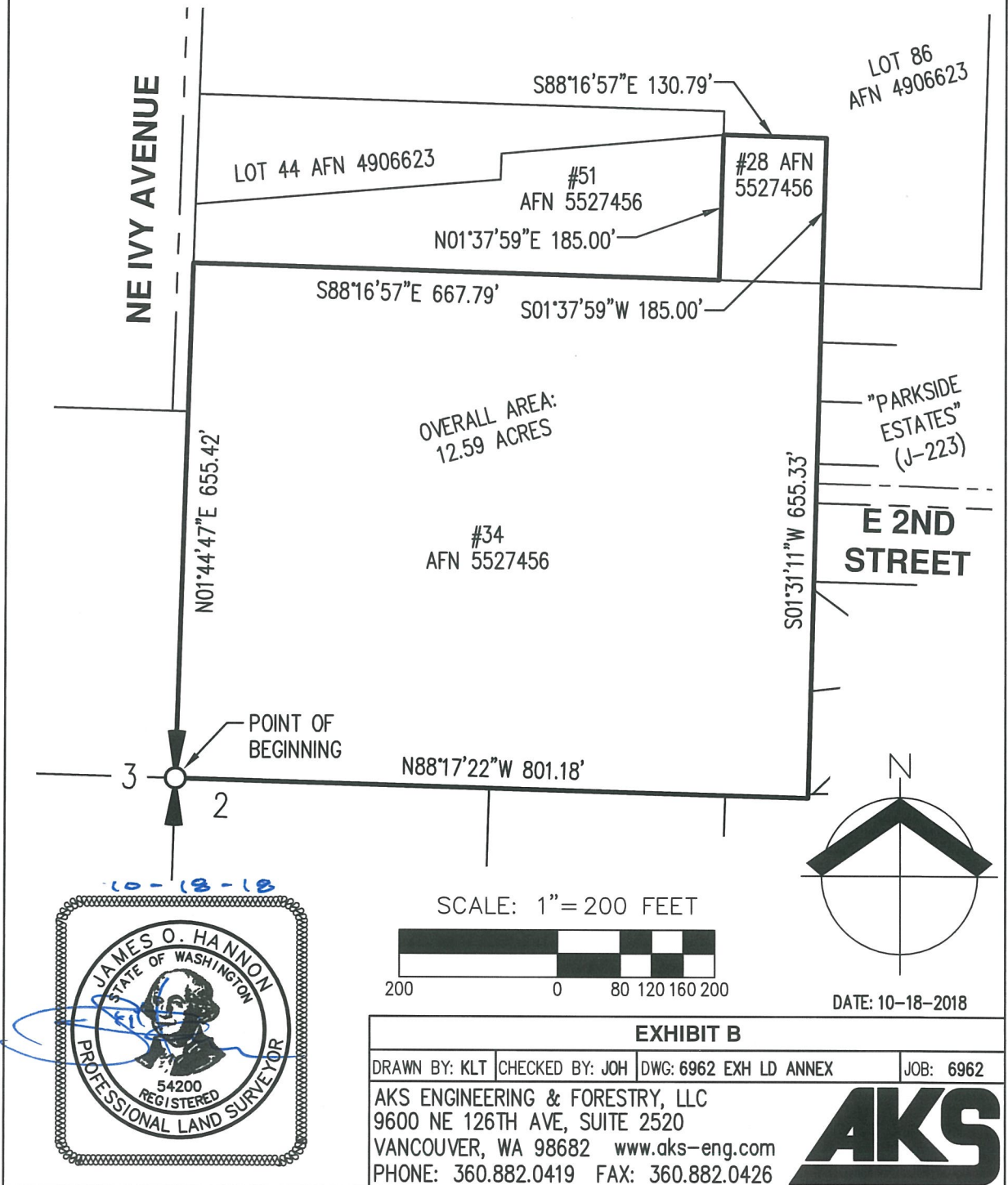


EXHIBIT B			
DRAWN BY: KLT	CHECKED BY: JOH	DWG: 6962 EXH LD ANNEX	JOB: 6962
AKS ENGINEERING & FORESTRY, LLC 9600 NE 126TH AVE, SUITE 2520 VANCOUVER, WA 98682 www.aks-eng.com PHONE: 360.882.0419 FAX: 360.882.0426			