

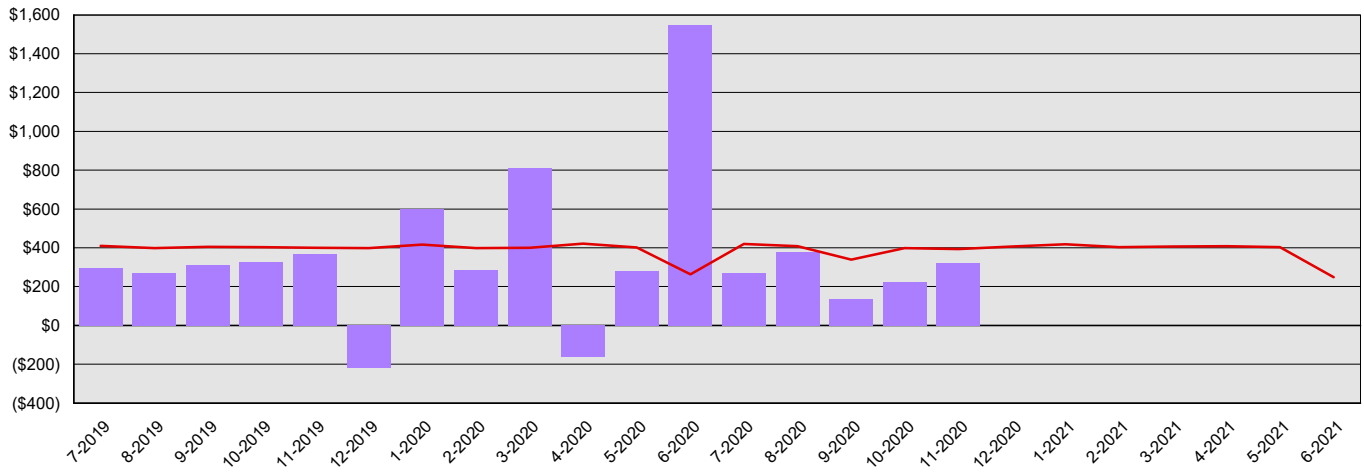
Puget Sound Partnership

Summary Financial Report for 2019-21 Biennium to Date

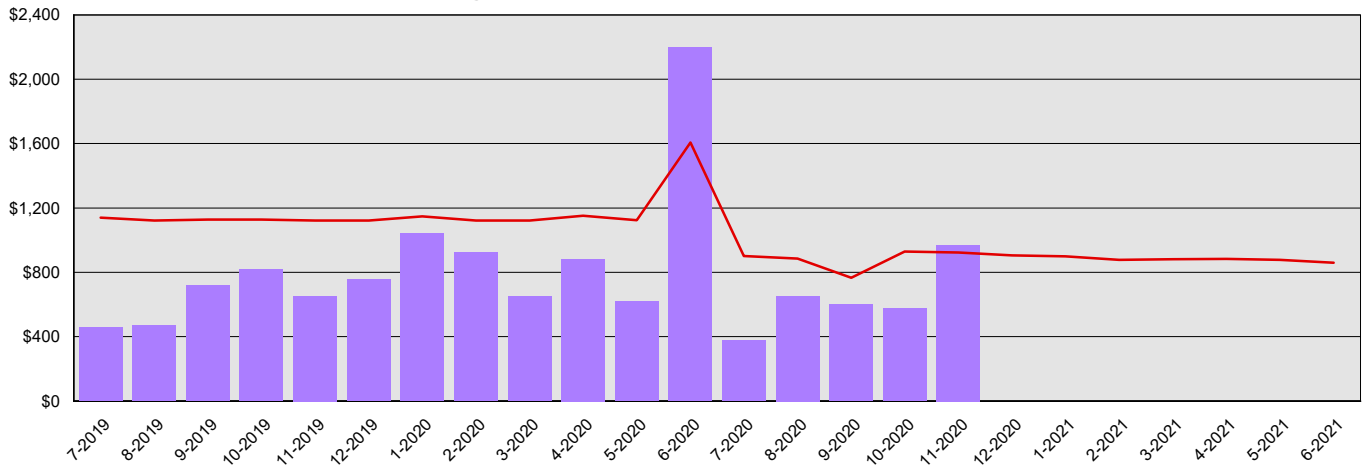
Dollars in Thousands

All Funds Variance to Date	\$5,089 Underexpenditure	27.6% Underexpenditure
----------------------------	--------------------------	------------------------

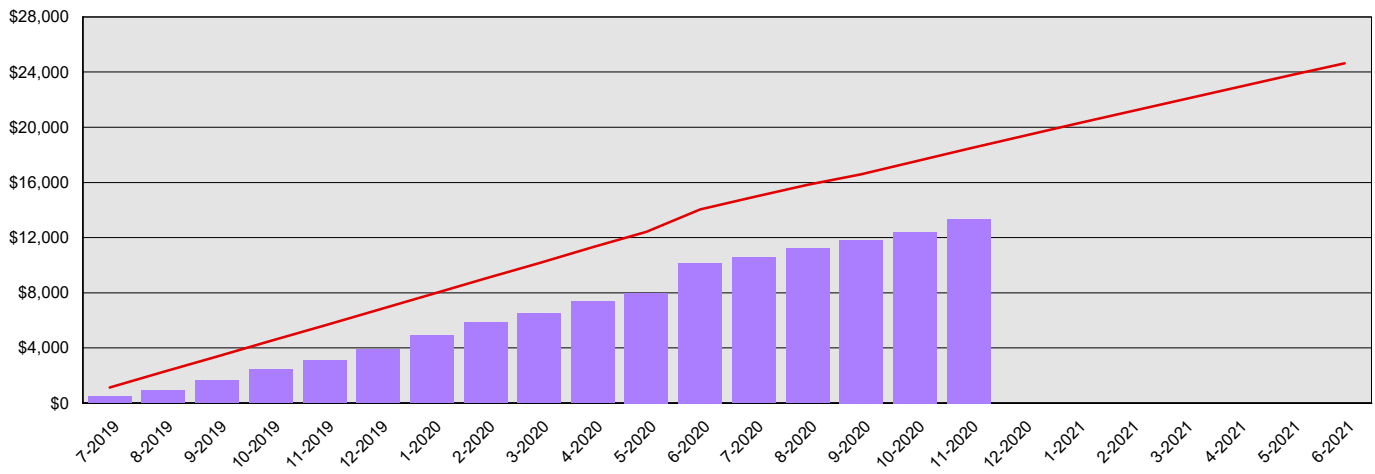
Monthly Planned vs. Actual Expenditures - GFS



Monthly Planned vs. Actual Expenditures - All Funds



Planned vs. Actual Cumulative Expenditures - All Funds



Actuals (Vertical Bars)



Estimates (line)



1/5/2021

Puget Sound Partnership
Summary Financial Report for 2019-21 Biennium to Date

Dollars in Thousands

Program/Fund Expenditure Detail

Expenditures by Program	Estimate¹	Actual	Variance	% Var.
Administration	\$18,445	\$13,356	\$5,089	27.6%
Total	\$18,445	\$13,356	\$5,089	27.6%

Expenditure by Fund Group	Estimate¹	Actual	Variance	% Var.
General Fund Federal	\$9,926	\$6,683	\$3,243	32.7%
General Fund State	\$6,676	\$6,049	\$627	9.4%
Other Funds Non-Appropriated	\$128	\$89	\$39	30.5%
Other Funds State	\$1,715	\$534	\$1,181	68.9%
Total	\$18,445	\$13,355	\$5,090	27.6%

FTEs by Program	Estimate¹	Actual	Variance	% Var.
Administration	49.3	44.7	4.6	9.3%
Total	49.3	44.7	4.6	9.3%

¹ Estimates include the OFM Official Allotment plus Unanticipated Receipts

² Only includes Accounts for the Administering Agency

Negative Variance - Denotes Possible Problem

Puget Sound Partnership
Summary Financial Report for 2019-21 Biennium to Date

Dollars in Thousands

Fund	Revenue Detail			
	Estimate ¹	Actual	Variance	% Var.
General Fund	\$9,642	\$6,031	(\$3,611)	-37.5%
Aquatic Lands Enhancement Account	\$0	\$13	\$13	0.0%
Industrial Insurance Premium Refund Account	\$0	\$8	\$8	0.0%
Model Toxics Control Operating Account	\$0	\$4	\$4	0.0%
Total	\$9,642	\$6,056	(\$3,586)	-37.2%

Fund Group	Revenue by Fund Group			
	Estimate ¹	Actual	Variance	% Var.
General Fund Federal	\$9,642	\$6,011	(\$3,631)	-37.7%
General Fund State	\$0	\$20	\$20	0.0%
Other Funds State	\$0	\$25	\$25	0.0%
Total	\$9,642	\$6,056	(\$3,586)	-37.2%

¹ Estimates include the OFM Official Allotment plus Unanticipated Receipts

² Only includes Accounts for the Administering Agency

Negative Variance - Denotes Possible Problem