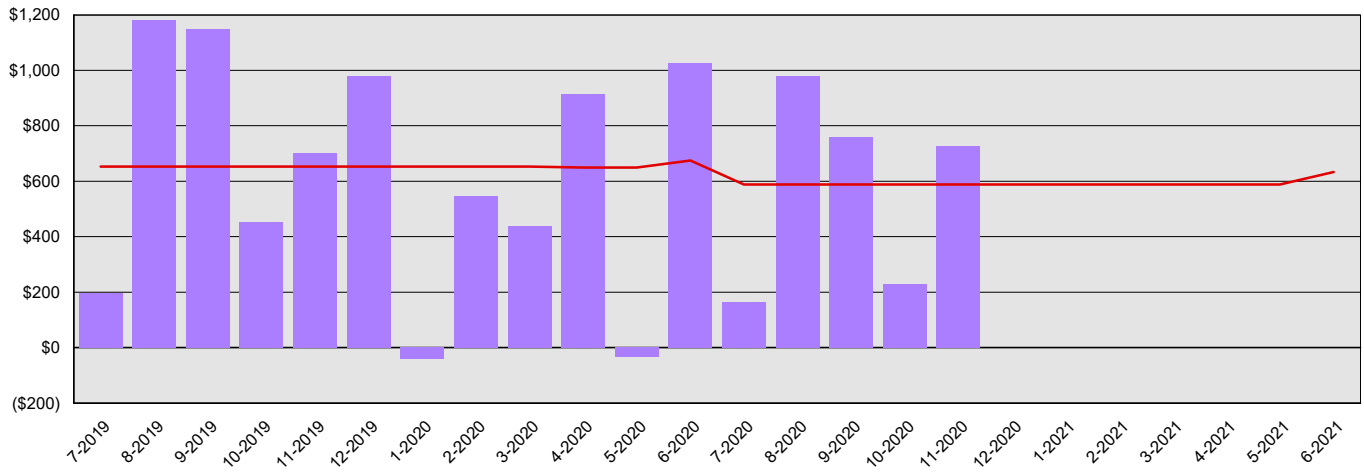


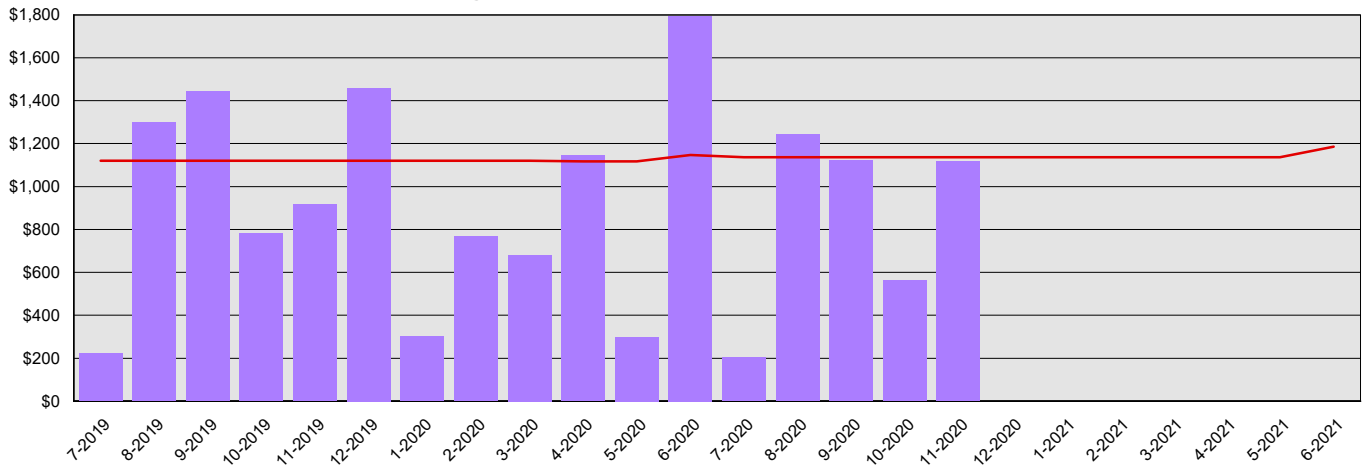
**State Conservation Commission**  
**Summary Financial Report for 2019-21 Biennium to Date**  
Dollars in Thousands

|                                   |                                 |                               |
|-----------------------------------|---------------------------------|-------------------------------|
| <b>All Funds Variance to Date</b> | <b>\$3,790 Underexpenditure</b> | <b>19.8% Underexpenditure</b> |
|-----------------------------------|---------------------------------|-------------------------------|

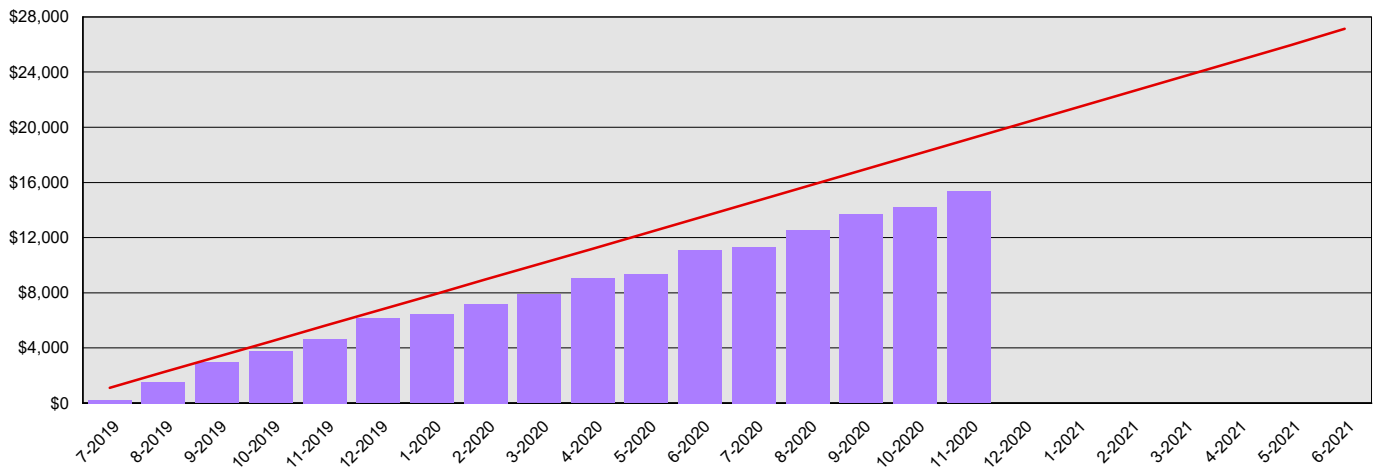
**Monthly Planned vs. Actual Expenditures - GFS**



**Monthly Planned vs. Actual Expenditures - All Funds**



**Planned vs. Actual Cumulative Expenditures - All Funds**



Actuals (Vertical Bars)



Estimates (line)



1/5/2021

**State Conservation Commission**  
**Summary Financial Report for 2019-21 Biennium to Date**

Dollars in Thousands

**Program/Fund Expenditure Detail**

| <b>Expenditures by Program</b>     |  | <b>Estimate<sup>1</sup></b> | <b>Actual</b>   | <b>Variance</b> | <b>% Var.</b> |
|------------------------------------|--|-----------------------------|-----------------|-----------------|---------------|
| Conservation Commission Operations |  | \$19,144                    | \$15,354        | \$3,790         | 19.8%         |
| <b>Total</b>                       |  | <b>\$19,144</b>             | <b>\$15,354</b> | <b>\$3,790</b>  | <b>19.8%</b>  |
| <b>Expenditure by Fund Group</b>   |  | <b>Estimate<sup>1</sup></b> | <b>Actual</b>   | <b>Variance</b> | <b>% Var.</b> |
| General Fund Federal               |  | \$1,477                     | \$549           | \$928           | 62.8%         |
| General Fund State                 |  | \$10,785                    | \$10,374        | \$411           | 3.8%          |
| Other Funds Non-Appropriated       |  | \$4                         | \$0             | \$4             | 100.0%        |
| Other Funds State                  |  | \$6,878                     | \$4,431         | \$2,447         | 35.6%         |
| <b>Total</b>                       |  | <b>\$19,144</b>             | <b>\$15,354</b> | <b>\$3,790</b>  | <b>19.8%</b>  |
| <b>FTEs by Program</b>             |  | <b>Estimate<sup>1</sup></b> | <b>Actual</b>   | <b>Variance</b> | <b>% Var.</b> |
| Conservation Commission Operations |  | 18.6                        | 21.6            | (3.0)           | -16.1%        |
| <b>Total</b>                       |  | <b>18.6</b>                 | <b>21.6</b>     | <b>(3.0)</b>    | <b>-16.1%</b> |

<sup>1</sup> Estimates include the OFM Official Allotment plus Unanticipated Receipts

<sup>2</sup> Only includes Accounts for the Administering Agency

Negative Variance - Denotes Possible Problem

**State Conservation Commission**  
**Summary Financial Report for 2019-21 Biennium to Date**

Dollars in Thousands

|   |  | <b>Revenue Detail</b>       |               |                  |               |
|---|--|-----------------------------|---------------|------------------|---------------|
| <b>Fund</b>                                 |  | <b>Estimate<sup>1</sup></b> | <b>Actual</b> | <b>Variance</b>  | <b>% Var.</b> |
| General Fund                                |  | \$1,606                     | \$506         | (\$1,100)        | -68.5%        |
| Industrial Insurance Premium Refund Account |  | \$0                         | \$5           | \$5              | 0.0%          |
| Conservation Assistance Revolving Account   |  | \$0                         | \$67          | \$67             | 0.0%          |
| <b>Total</b>                                |  | <b>\$1,606</b>              | <b>\$578</b>  | <b>(\$1,028)</b> | <b>-64.0%</b> |

|                      |  | <b>Revenue by Fund Group</b> |               |                  |               |
|----------------------|--|------------------------------|---------------|------------------|---------------|
| <b>Fund Group</b>    |  | <b>Estimate<sup>1</sup></b>  | <b>Actual</b> | <b>Variance</b>  | <b>% Var.</b> |
| General Fund Federal |  | \$1,606                      | \$506         | (\$1,100)        | -68.5%        |
| Other Funds State    |  | \$0                          | \$72          | \$72             | 0.0%          |
| <b>Total</b>         |  | <b>\$1,606</b>               | <b>\$578</b>  | <b>(\$1,028)</b> | <b>-64.0%</b> |

1 Estimates include the OFM Official Allotment plus Unanticipated Receipts

2 Only includes Accounts for the Administering Agency

Negative Variance - Denotes Possible Problem