

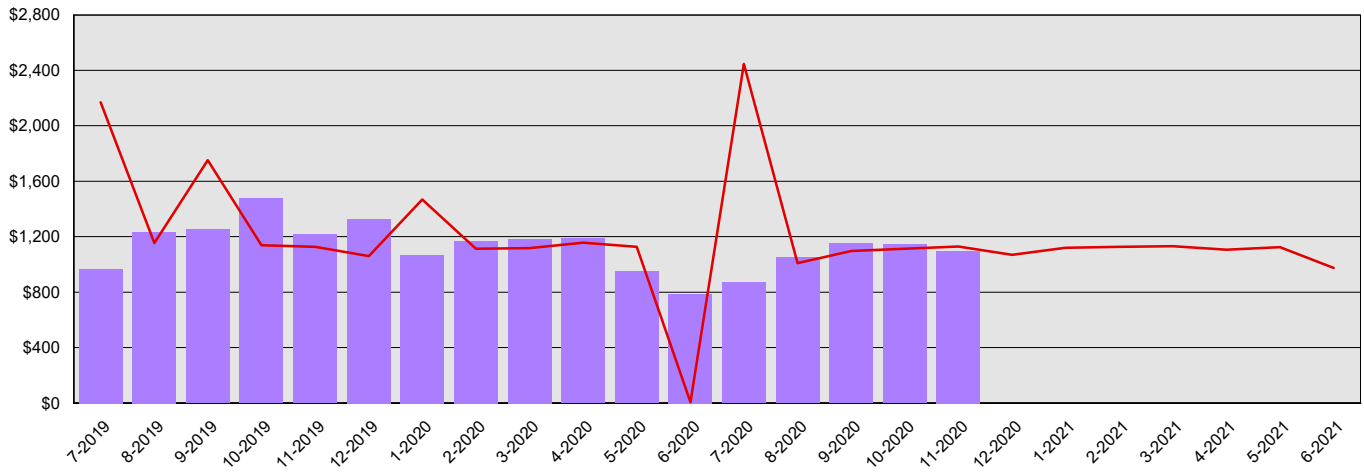
# Washington State Center for Childhood Deafness and Hearing Loss

## Summary Financial Report for 2019-21 Biennium to Date

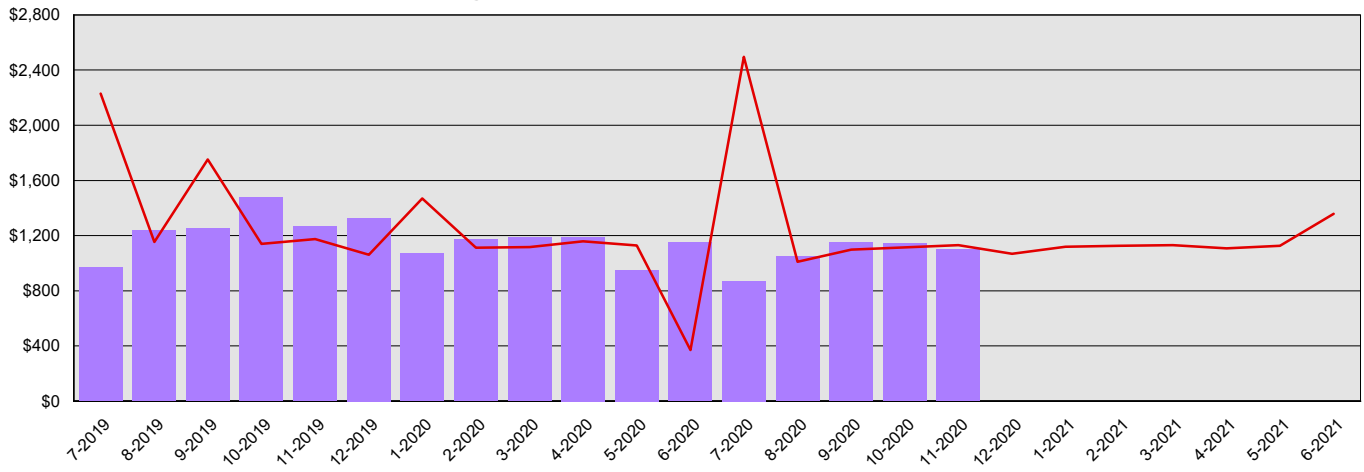
Dollars in Thousands

All Funds Variance to Date	\$2,167 Underexpenditure	10.0% Underexpenditure
----------------------------	--------------------------	------------------------

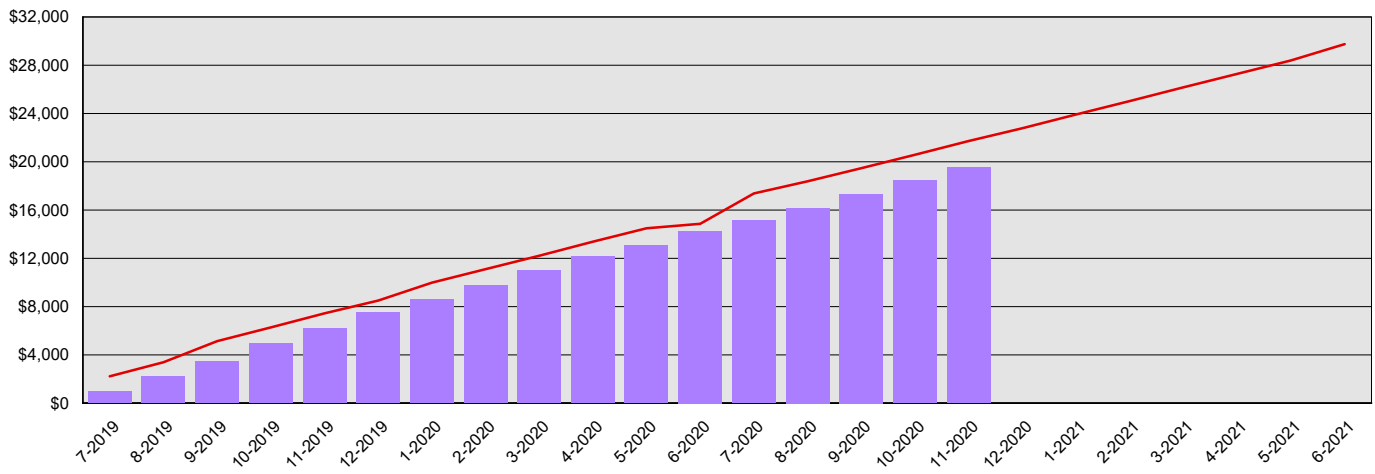
Monthly Planned vs. Actual Expenditures - GFS



Monthly Planned vs. Actual Expenditures - All Funds



Planned vs. Actual Cumulative Expenditures - All Funds



Actuals (Vertical Bars)



Estimates (line)



1/5/2021

Washington State Center for Childhood Deafness and Hearing Loss  
**Summary Financial Report for 2019-21 Biennium to Date**

Dollars in Thousands

**Program/Fund Expenditure Detail**

<b>Expenditures by Program</b>		<b>Estimate<sup>1</sup></b>	<b>Actual</b>	<b>Variance</b>	<b>% Var.</b>
State Funds		\$21,719	\$19,552	\$2,167	10.0%
	<b>Total</b>	<b>\$21,719</b>	<b>\$19,552</b>	<b>\$2,167</b>	<b>10.0%</b>
<b>Expenditure by Fund Group</b>		<b>Estimate<sup>1</sup></b>	<b>Actual</b>	<b>Variance</b>	<b>% Var.</b>
General Fund State		\$21,187	\$19,142	\$2,045	9.7%
Other Funds Non-Appropriated		\$168	\$46	\$122	72.6%
Other Funds State		\$364	\$364	\$0	0.0%
	<b>Total</b>	<b>\$21,719</b>	<b>\$19,552</b>	<b>\$2,167</b>	<b>10.0%</b>
<b>FTEs by Program</b>		<b>Estimate<sup>1</sup></b>	<b>Actual</b>	<b>Variance</b>	<b>% Var.</b>
State Funds		138.0	129.3	8.7	6.3%
	<b>Total</b>	<b>138.0</b>	<b>129.3</b>	<b>8.7</b>	<b>6.3%</b>

<sup>1</sup> Estimates include the OFM Official Allotment plus Unanticipated Receipts

<sup>2</sup> Only includes Accounts for the Administering Agency

Negative Variance - Denotes Possible Problem

# Washington State Center for Childhood Deafness and Hearing Loss

## Summary Financial Report for 2019-21 Biennium to Date

Dollars in Thousands

Fund	Revenue Detail				% Var.
	Estimate <sup>1</sup>	Actual	Variance		
General Fund	\$0	\$22	\$22		0.0%
Industrial Insurance Premium Refund Account	\$0	\$46	\$46		0.0%
Center for Deaf and Hard of Hearing Youth Account	\$816	\$1,177	\$361		44.2%
<b>Total</b>	<b>\$816</b>	<b>\$1,245</b>	<b>\$429</b>		<b>52.6%</b>

Fund Group	Revenue by Fund Group				% Var.
	Estimate <sup>1</sup>	Actual	Variance		
General Fund State	\$0	\$22	\$22		0.0%
Other Funds Private/Local	\$0	\$79	\$79		0.0%
Other Funds State	\$816	\$1,143	\$327		40.1%
<b>Total</b>	<b>\$816</b>	<b>\$1,244</b>	<b>\$428</b>		<b>52.5%</b>

<sup>1</sup> Estimates include the OFM Official Allotment plus Unanticipated Receipts

<sup>2</sup> Only includes Accounts for the Administering Agency

Negative Variance - Denotes Possible Problem