

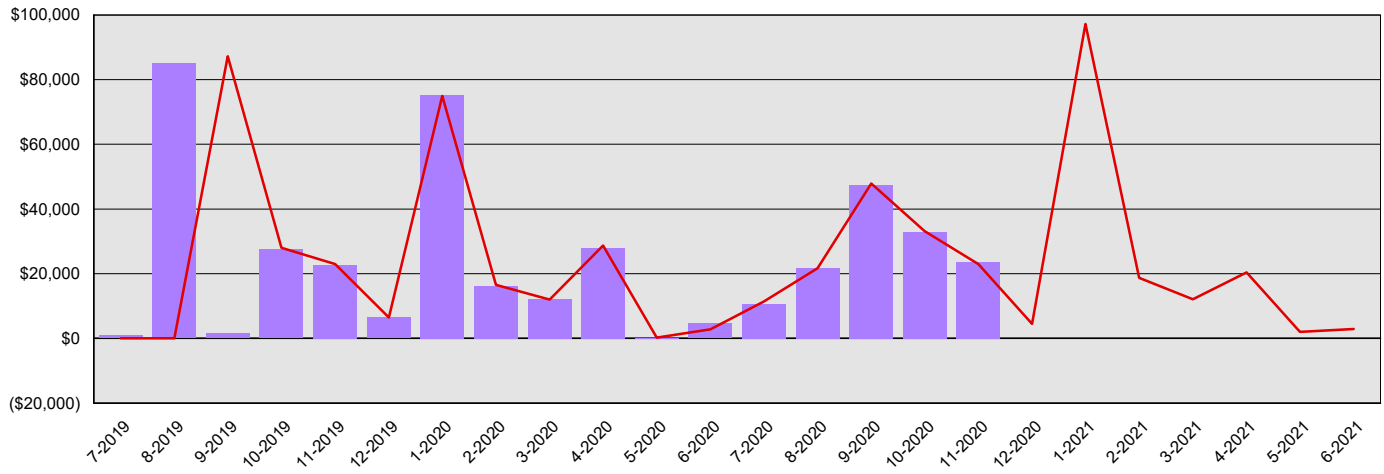
# Student Achievement Council

## Summary Financial Report for 2019-21 Biennium to Date

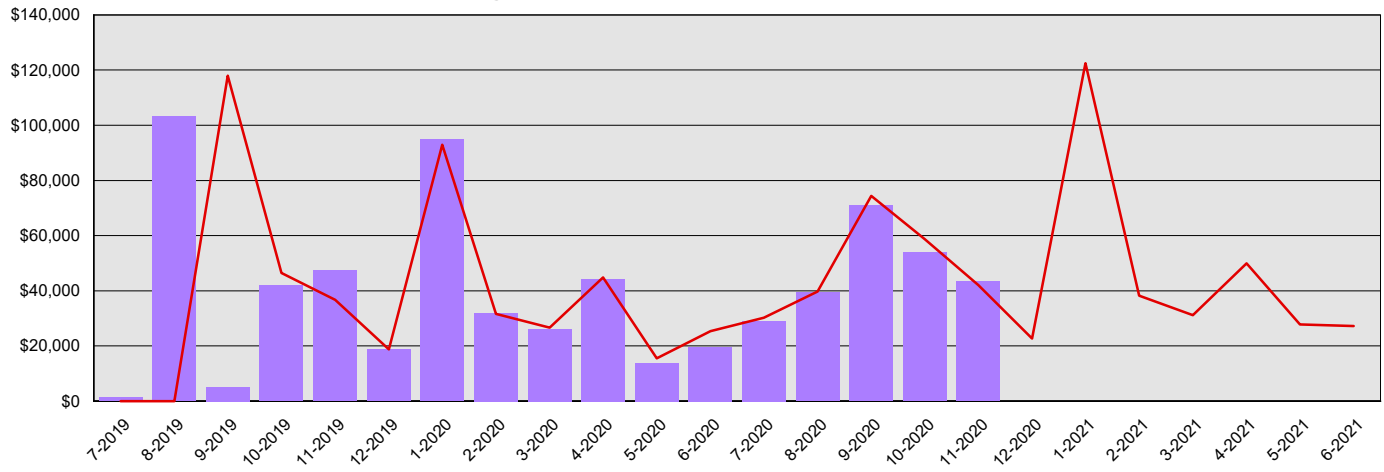
Dollars in Thousands

All Funds Variance to Date	\$17,396 Underexpenditure	2.5% Underexpenditure
----------------------------	---------------------------	-----------------------

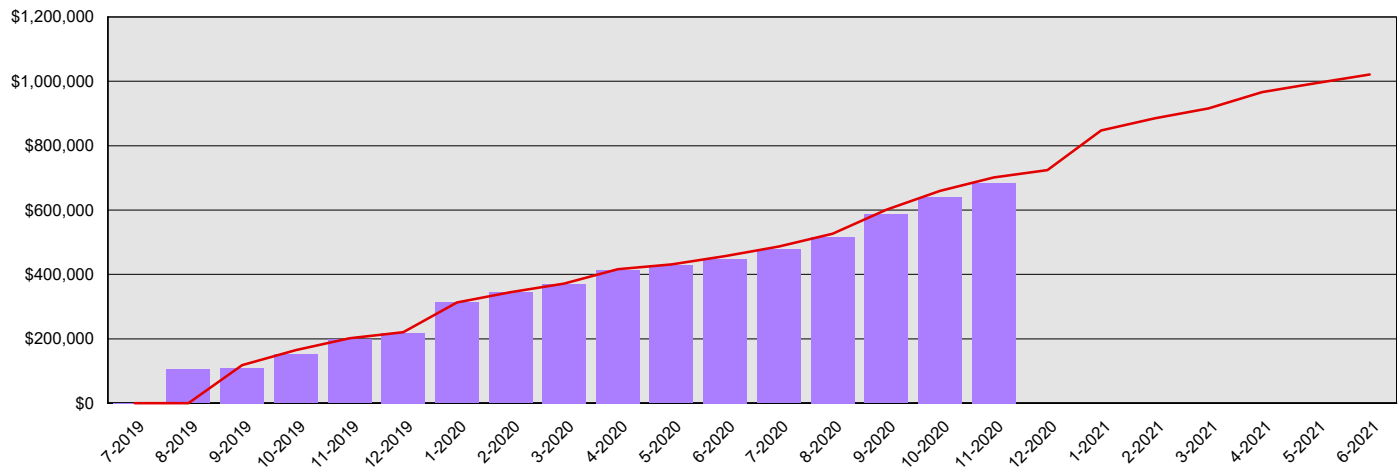
Monthly Planned vs. Actual Expenditures - GFS



Monthly Planned vs. Actual Expenditures - All Funds



Planned vs. Actual Cumulative Expenditures - All Funds



Actuals (Vertical Bars)



Estimates (line)



1/5/2021

**Student Achievement Council**  
**Summary Financial Report for 2019-21 Biennium to Date**

Dollars in Thousands

**Program/Fund Expenditure Detail**

<b>Expenditures by Program</b>	<b>Estimate<sup>1</sup></b>	<b>Actual</b>	<b>Variance</b>	<b>% Var.</b>
Coordination and Policy	\$13,085	\$10,477	\$2,608	19.9%
Advanced College Tuition Payment	\$9,982	\$7,732	\$2,250	22.5%
Student Financial Assistance	\$678,564	\$666,026	\$12,538	1.8%
College Work Study	\$0	\$0	\$0	0.0%
<b>Total</b>	<b>\$701,631</b>	<b>\$684,235</b>	<b>\$17,396</b>	<b>2.5%</b>

<b>Expenditure by Fund Group</b>	<b>Estimate<sup>1</sup></b>	<b>Actual</b>	<b>Variance</b>	<b>% Var.</b>
General Fund Federal	\$10,232	\$5,496	\$4,736	46.3%
General Fund Private/Local	\$678	\$299	\$379	55.9%
General Fund State	\$416,862	\$415,955	\$907	0.2%
Other Funds Non-Appropriated	\$20,176	\$15,570	\$4,606	22.8%
Other Funds State	\$253,683	\$246,914	\$6,769	2.7%
<b>Total</b>	<b>\$701,631</b>	<b>\$684,234</b>	<b>\$17,397</b>	<b>2.5%</b>

<b>FTEs by Program</b>	<b>Estimate<sup>1</sup></b>	<b>Actual</b>	<b>Variance</b>	<b>% Var.</b>
Coordination and Policy	46.7	62.2	(15.5)	-33.2%
Advanced College Tuition Payment	38.8	26.6	12.2	31.4%
Student Financial Assistance	33.7	17.6	16.1	47.8%
College Work Study	0.0	0.1	(0.1)	0.0%
<b>Total</b>	<b>119.2</b>	<b>106.6</b>	<b>12.7</b>	<b>10.7%</b>

<sup>1</sup> Estimates include the OFM Official Allotment plus Unanticipated Receipts

<sup>2</sup> Only includes Accounts for the Administering Agency

Negative Variance - Denotes Possible Problem

# Student Achievement Council

## Summary Financial Report for 2019-21 Biennium to Date

Dollars in Thousands

### Revenue Detail

Fund	Estimate <sup>1</sup>	Actual	Variance	% Var.
General Fund	\$11,736	\$5,542	(\$6,194)	-52.8%
Aerospace Training Student Loan Account	\$0	\$109	\$109	0.0%
Medical Student Loan Account	\$504	\$504	\$0	0.0%
Behavioral Health Loan Repymt Prog Acct	\$2,000	\$2,000	\$0	0.0%
Washington College Savings Program Account	\$1,521	\$1,339	(\$182)	-12.0%
Educator Conditional Scholarship Account	\$327	(\$153)	(\$480)	-146.8%
Health Professionals Loan Repayment and Scholarship Program Account	\$6,855	\$6,589	(\$266)	-3.9%
State Educational Trust Fund Account	\$1,160	\$934	(\$226)	-19.5%
Advanced College Tuition Payment Program Account	\$0	\$17	\$17	0.0%
Four Year Student Child Care in Higher Education Account	\$150	\$150	\$0	0.0%
<b>Total</b>	<b>\$24,253</b>	<b>\$17,031</b>	<b>(\$7,222)</b>	<b>-29.8%</b>

### Revenue by Fund Group

Fund Group	Estimate <sup>1</sup>	Actual	Variance	% Var.
General Fund Federal	\$10,703	\$5,264	(\$5,439)	-50.8%
General Fund Private/Local	\$813	\$113	(\$700)	-86.1%
General Fund State	\$219	\$165	(\$54)	-24.7%
Other Funds Federal	\$656	\$581	(\$75)	-11.4%
Other Funds State	\$11,861	\$10,907	(\$954)	-8.0%
<b>Total</b>	<b>\$24,252</b>	<b>\$17,030</b>	<b>(\$7,222)</b>	<b>-29.8%</b>

### Fund Balances Showing Deficits <sup>2</sup>

Fund	BTD Balance	Proj. Balance
Medical Student Loan Account	\$504	(\$18)
Student Loan Advocate Account	\$102	(\$17)
Workforce Education Investment Account	\$19,153	(\$44,871)
Educator Conditional Scholarship Account	(\$503)	(\$668)
State Educational Trust Fund Account	(\$5,099)	(\$11,719)

<sup>1</sup> Estimates include the OFM Official Allotment plus Unanticipated Receipts

<sup>2</sup> Only includes Accounts for the Administering Agency

Negative Variance - Denotes Possible Problem