

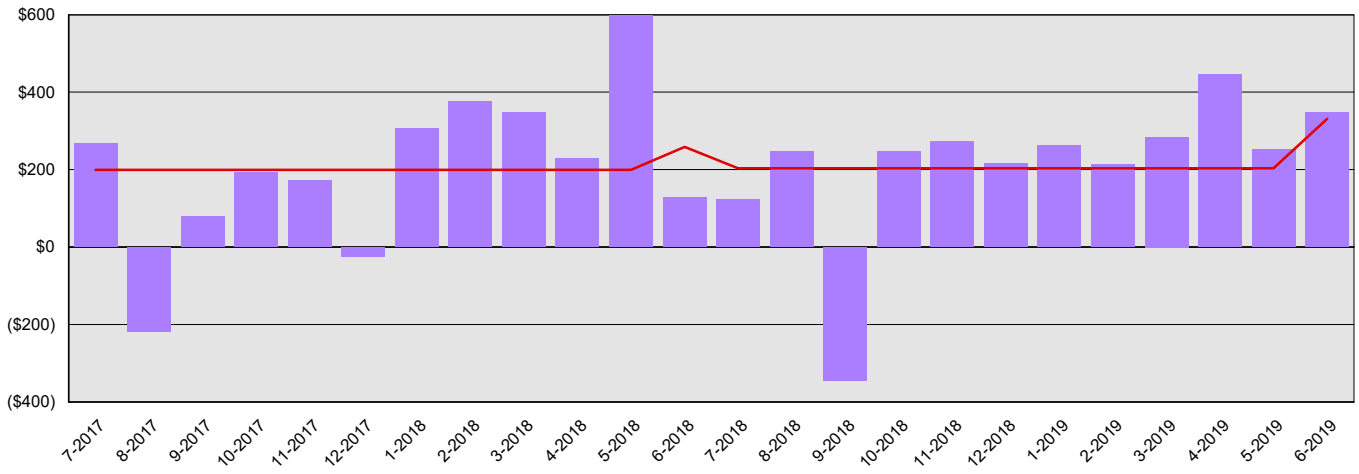
Department of Services for the Blind

Summary Financial Report for 2017-19 Biennium to Date

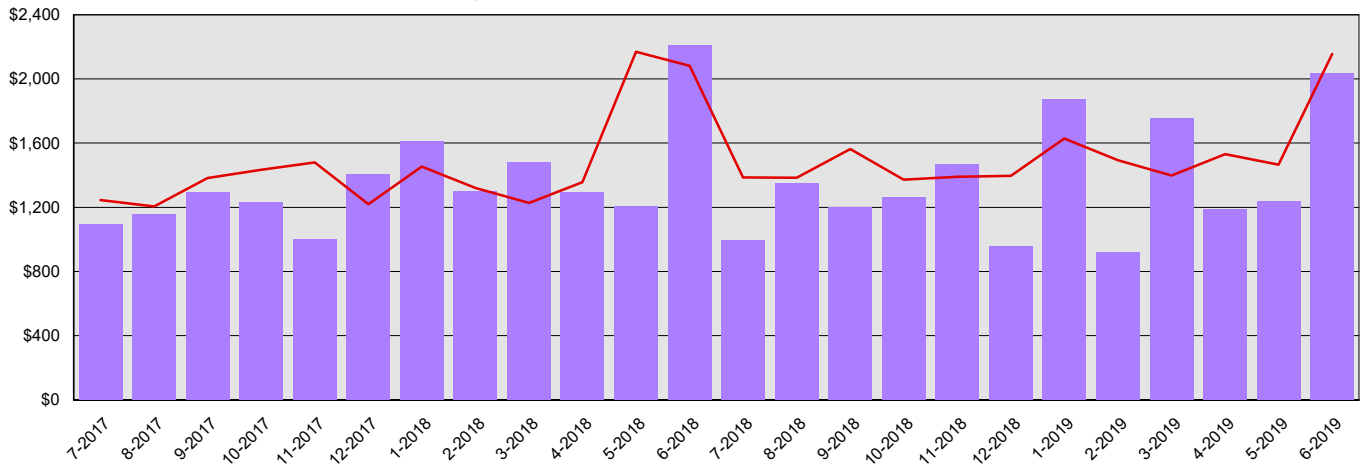
Dollars in Thousands

All Funds Variance to Date	\$3,238 Underexpenditure	9.1% Underexpenditure
----------------------------	--------------------------	-----------------------

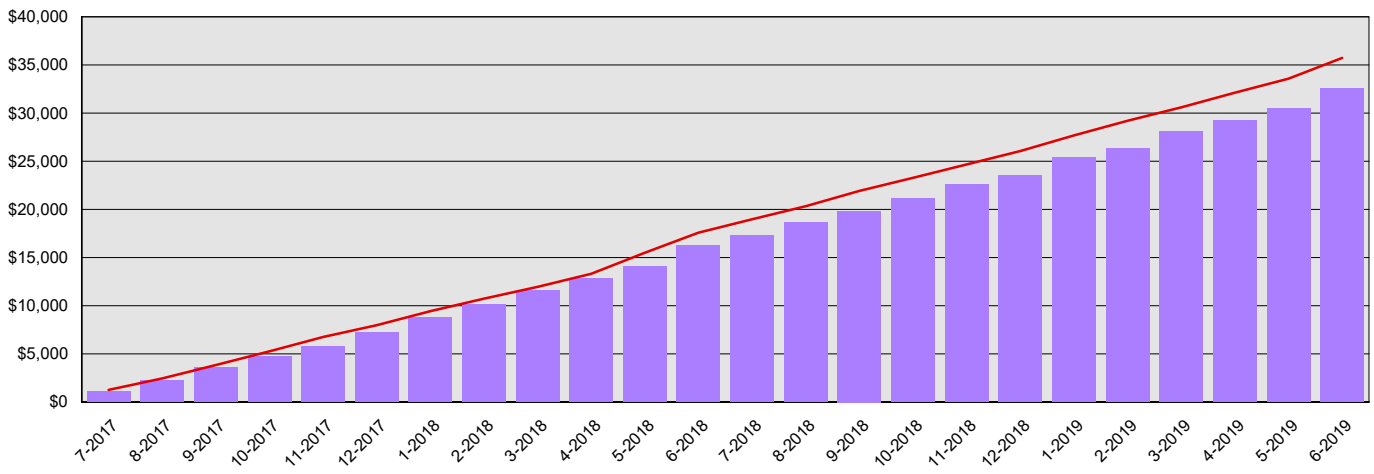
Monthly Planned vs. Actual Expenditures - GFS



Monthly Planned vs. Actual Expenditures - All Funds



Planned vs. Actual Cumulative Expenditures - All Funds



Actuals (Vertical Bars)



Estimates (line)



Department of Services for the Blind
Summary Financial Report for 2017-19 Biennium to Date

Dollars in Thousands

Program/Fund Expenditure Detail

Expenditures by Program	Estimate¹	Actual	Variance	% Var.
Vocational Rehabilitation	\$25,175	\$21,327	\$3,848	15.3%
Agency Administration	\$8,296	\$8,725	(\$429)	-5.2%
Business Enterprises	\$2,267	\$2,448	(\$181)	-8.0%
Total	\$35,738	\$32,500	\$3,238	9.1%

Expenditure by Fund Group	Estimate¹	Actual	Variance	% Var.
General Fund Federal	\$25,274	\$21,879	\$3,395	13.4%
General Fund Private/Local	\$80	\$61	\$19	23.8%
General Fund State	\$5,019	\$5,019	\$0	0.0%
Other Funds Non-Appropriated	\$5,192	\$5,368	(\$176)	-3.4%
Other Funds State	\$173	\$173	\$0	0.0%
Total	\$35,738	\$32,500	\$3,238	9.1%

FTEs by Program	Estimate¹	Actual	Variance	% Var.
Vocational Rehabilitation	63.1	58.4	4.7	7.4%
Agency Administration	13.9	18.9	(5.0)	-36.0%
Business Enterprises	3.0	2.9	0.1	3.3%
Total	80.0	80.1	(0.2)	-0.3%

1 Estimates include the OFM Official Allotment plus Unanticipated Receipts

2 Only includes Accounts for the Administering Agency

Negative Variance - Denotes Possible Problem

Department of Services for the Blind
Summary Financial Report for 2017-19 Biennium to Date

Dollars in Thousands

Fund	Revenue Detail			
	Estimate ¹	Actual	Variance	% Var.
General Fund	\$25,354	\$21,664	(\$3,690)	-14.6%
Business Enterprises Revolving Account	\$1,986	\$2,453	\$467	23.5%
Total	\$27,340	\$24,117	(\$3,223)	-11.8%

Fund Group	Revenue by Fund Group			
	Estimate ¹	Actual	Variance	% Var.
General Fund Federal	\$25,274	\$21,592	(\$3,682)	-14.6%
General Fund Private/Local	\$80	\$62	(\$18)	-22.5%
General Fund State	\$0	\$10	\$10	0.0%
Other Funds Federal	\$0	\$0	\$0	0.0%
Other Funds Private/Local	\$0	\$7	\$7	0.0%
Other Funds State	\$1,986	\$2,446	\$460	23.2%
Total	\$27,340	\$24,117	(\$3,223)	-11.8%

1 Estimates include the OFM Official Allotment plus Unanticipated Receipts

2 Only includes Accounts for the Administering Agency

Negative Variance - Denotes Possible Problem