

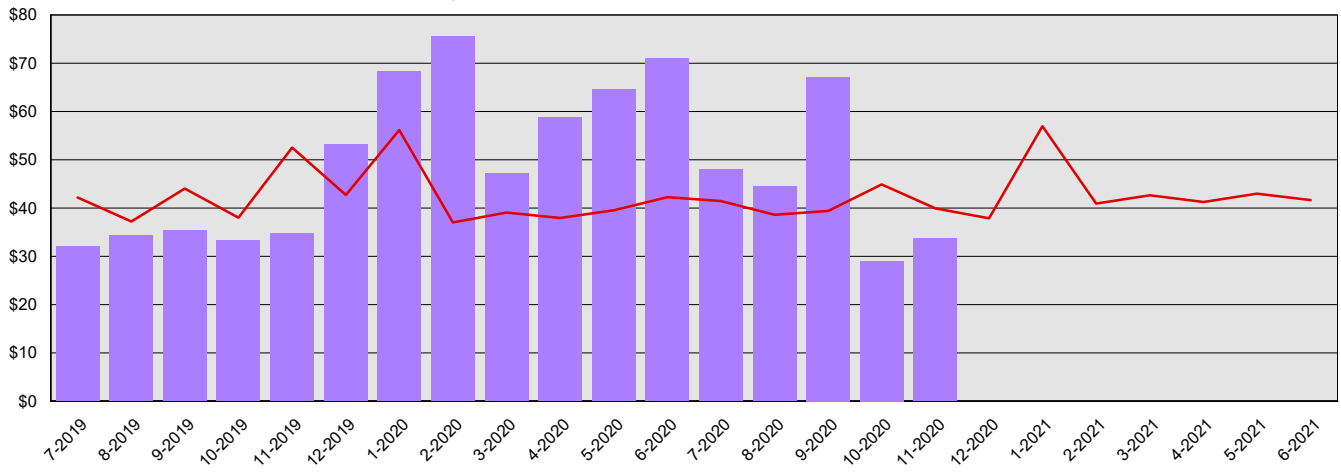
Board for Volunteer Firefighters and Reserve Officers

Summary Financial Report for 2019-21 Biennium to Date

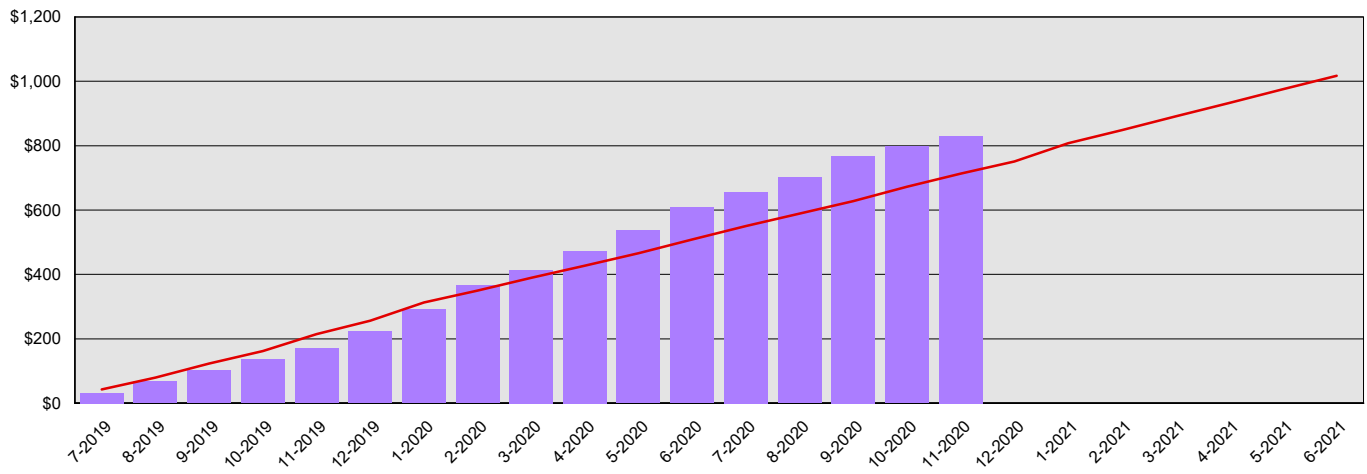
Dollars in Thousands

All Funds Variance to Date	\$117 Overexpenditure	16.4% Overexpenditure
----------------------------	-----------------------	-----------------------

Monthly Planned vs. Actual Expenditures - All Funds



Planned vs. Actual Cumulative Expenditures - All Funds



Actuals (Vertical Bars)



Estimates (line)



1/5/2021

Board for Volunteer Firefighters and Reserve Officers

Summary Financial Report for 2019-21 Biennium to Date

Dollars in Thousands

Program/Fund Expenditure Detail

Expenditures by Program		Estimate ¹	Actual	Variance	% Var.
Administration		\$713	\$830	(\$117)	-16.4%
	Total	\$713	\$830	(\$117)	-16.4%
Expenditure by Fund Group		Estimate ¹	Actual	Variance	% Var.
Other Funds Non-Appropriated		\$0	\$202	(\$202)	0.0%
Other Funds State		\$713	\$628	\$85	11.9%
	Total	\$713	\$830	(\$117)	-16.4%
FTEs by Program		Estimate ¹	Actual	Variance	% Var.
Administration		4.0	3.3	0.7	17.5%
	Total	4.0	3.3	0.7	17.5%

1 Estimates include the OFM Official Allotment plus Unanticipated Receipts

2 Only includes Accounts for the Administering Agency

Negative Variance - Denotes Possible Problem

Board for Volunteer Firefighters and Reserve Officers

Summary Financial Report for 2019-21 Biennium to Date

Dollars in Thousands

Revenue Detail				
Fund	Estimate ¹	Actual	Variance	% Var.
Industrial Insurance Premium Refund Account	\$0	\$1	\$1	0.0%
Volunteer Firefighters' and Reserve Officers' Administrative Account	\$0	(\$8,196)	(\$8,196)	0.0%
Total	\$0	(\$8,195)	(\$8,195)	0.0%

Revenue by Fund Group				
Fund Group	Estimate ¹	Actual	Variance	% Var.
Other Funds State	\$0	(\$8,195)	(\$8,195)	0.0%
Total	\$0	(\$8,195)	(\$8,195)	0.0%

Fund Balances Showing Deficits ²		
Fund	BTB Balance	Proj. Balance
Volunteer Firefighters' and Reserve Officers' Administrative Account	(\$361)	\$16,585

¹ Estimates include the OFM Official Allotment plus Unanticipated Receipts

² Only includes Accounts for the Administering Agency

Negative Variance - Denotes Possible Problem