

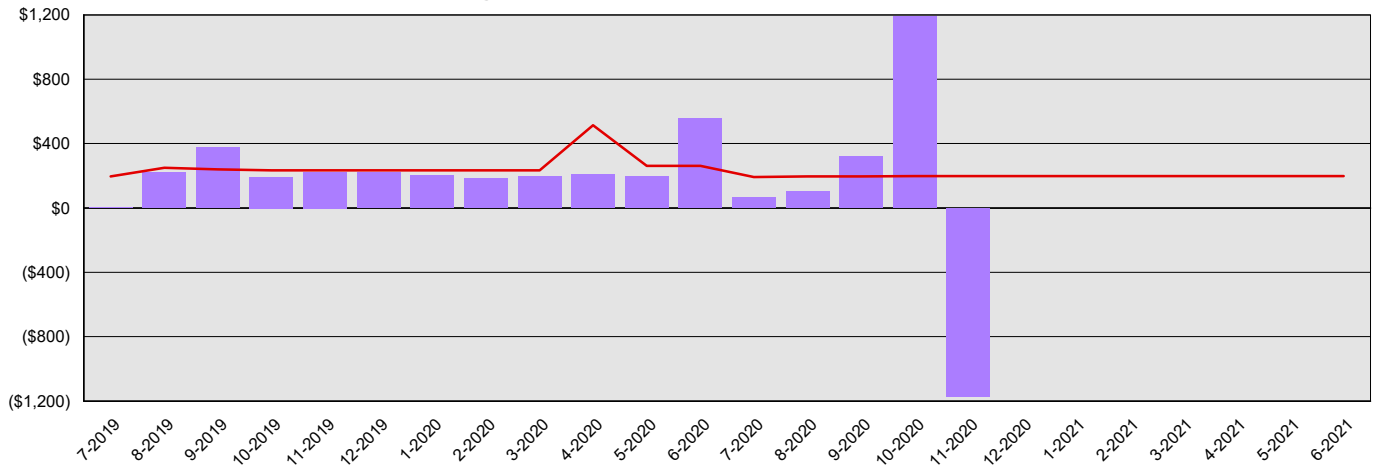
Board of Registration for Professional Engineers & Land Surveyors

Summary Financial Report for 2019-21 Biennium to Date

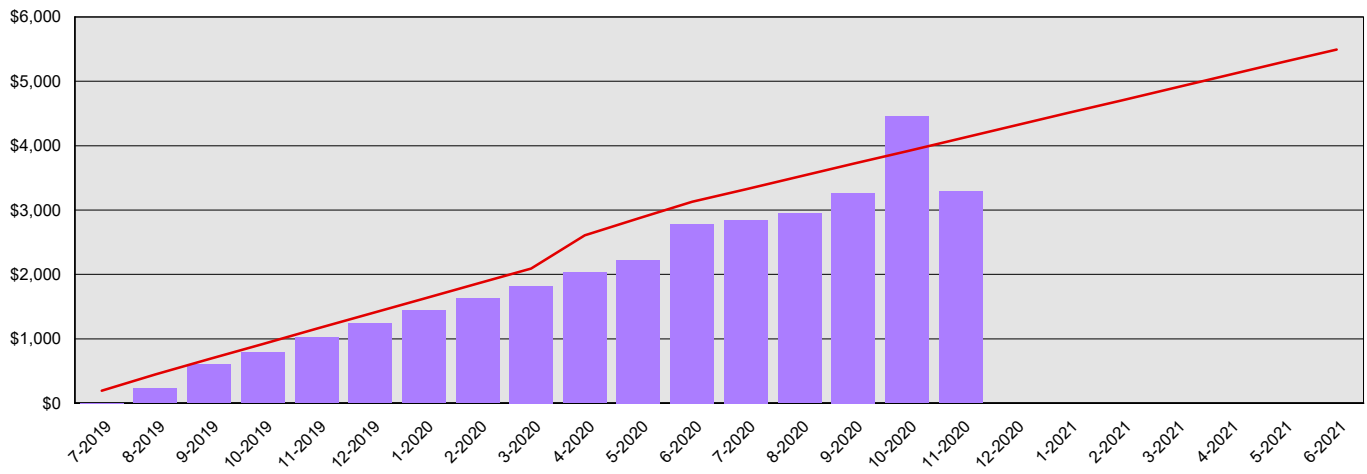
Dollars in Thousands

All Funds Variance to Date	\$827 Underexpenditure	20.1% Underexpenditure
----------------------------	------------------------	------------------------

Monthly Planned vs. Actual Expenditures - All Funds



Planned vs. Actual Cumulative Expenditures - All Funds



Actuals (Vertical Bars)



Estimates (line)



1/5/2021

Board of Registration for Professional Engineers & Land Surveyors
Summary Financial Report for 2019-21 Biennium to Date

Dollars in Thousands

Program/Fund Expenditure Detail

Expenditures by Program		Estimate¹	Actual	Variance	% Var.
Administration		\$4,112	\$3,285	\$827	20.1%
	Total	\$4,112	\$3,285	\$827	20.1%
Expenditure by Fund Group		Estimate¹	Actual	Variance	% Var.
Other Funds State		\$4,112	\$3,285	\$827	20.1%
	Total	\$4,112	\$3,285	\$827	20.1%
FTEs by Program		Estimate¹	Actual	Variance	% Var.
Administration		4.7	5.6	(0.9)	-19.1%
	Total	4.7	5.6	(0.9)	-19.1%

1 Estimates include the OFM Official Allotment plus Unanticipated Receipts

2 Only includes Accounts for the Administering Agency

Negative Variance - Denotes Possible Problem

Board of Registration for Professional Engineers & Land Surveyors
Summary Financial Report for 2019-21 Biennium to Date

Dollars in Thousands

		Revenue Detail			
Fund		Estimate¹	Actual	Variance	% Var.
Professional Engineers' Account		\$2,904	\$28	(\$2,876)	-99.0%
	Total	\$2,904	\$28	(\$2,876)	-99.0%

		Revenue by Fund Group			
Fund Group		Estimate¹	Actual	Variance	% Var.
Other Funds State		\$2,904	\$28	(\$2,876)	-99.0%
	Total	\$2,904	\$28	(\$2,876)	-99.0%

¹ Estimates include the OFM Official Allotment plus Unanticipated Receipts

² Only includes Accounts for the Administering Agency

Negative Variance - Denotes Possible Problem