



2011 Organization Chart Washington State Government

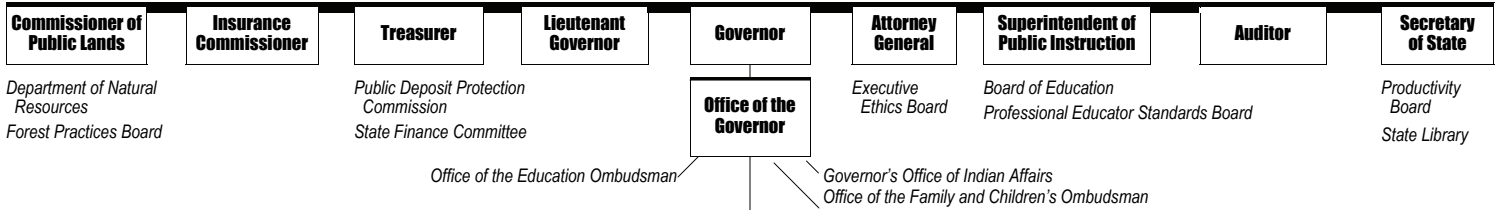
Legislative Branch

Executive Branch

Judicial Branch

| Senate | House of Representatives | Supreme Court | |
|--|---|-------------------------------------|--------------------------|
| Joint Legislative Audit and Review Committee | Legislative Evaluation and Accountability Program Committee | Administrative Office of the Courts | Law Library |
| Joint Legislative Systems Committee | Office of the State Actuary | Office of Civil Legal Aid | Municipal Courts |
| Joint Transportation Committee | Redistricting Commission (<i>activated decennially</i>) | Court of Appeals | Office of Public Defense |
| Legislative Ethics Board | Statute Law Committee (<i>Code Reviser</i>) | Commission on Judicial Conduct | Superior Courts |
| | | District Courts | Supreme Court |

Agencies Managed by Statewide Elected Officials



| Environment and Natural Resources | General Government | Transportation | Health and Human Services | Education | Community and Economic Development |
|-----------------------------------|--------------------|----------------|---------------------------|-----------|------------------------------------|
|-----------------------------------|--------------------|----------------|---------------------------|-----------|------------------------------------|

Agencies Led by Governor-Appointed Executives

| | | | | | |
|--|---|---|--|--|--|
| Dept. of Agriculture (<i>commodity commissions</i>) | Board of Accountancy Office of Administrative Hearings | Dept. of Licensing (<i>occupational regulatory boards</i>) | Dept. of Corrections - <i>Indeterminate Sentence Review Board</i> | Center for Childhood Deafness and Hearing Loss - <i>Board of Trustees</i> | Commission on African-American Affairs |
| Dept. of Ecology | Dept. of Archaeology and Historic Preservation | State Patrol | Dept. of Employment Security | Dept. of Early Learning School for the Blind | Arts Commission |
| Pollution Liability Insurance Program | Consolidated Technology Services | Traffic Safety Commission | Dept. of Health (<i>occupational regulatory boards</i>) | Workforce Training and Education Coordinating Board | Commission on Asian Pacific American Affairs |
| Puget Sound Partnership | Dept. of Enterprise Services - <i>Building Code Council</i> | Dept. of Transportation | Health Care Authority - <i>Public Employees Benefits Board</i> | | Dept. of Commerce - <i>Economic Development Commission</i> - <i>Energy Facility Site Evaluation Council</i> - <i>Public Works Board</i> |
| Recreation and Conservation Office | Dept. of Financial Institutions | | Dept. of Labor and Industries | | Commission on Hispanic Affairs |
| | Office of Financial Management - <i>Personnel Resources Board</i> - <i>Sentencing Guidelines Commission</i> - <i>Technology Services Board</i> | | Council for Children and Families | | Office of Minority and Women's Business Enterprises |
| | Lottery Commission | | Dept. of Services for the Blind | | |
| | Military Department | | Dept. of Social and Health Services | | |
| | Dept. of Retirement Systems | | Dept. of Veterans Affairs | | |
| | Dept. of Revenue | | | | |

Agencies Under Authority of a Board

| | | | | | |
|--|---|---|---------------------------------------|---|--|
| Columbia River Gorge Commission | Caseload Forecast Council | County Road Administration Board | Criminal Justice Training Commission | State Board for Community and Technical Colleges | Convention and Trade Center |
| Conservation Commission | Citizens' Commission on Salaries for Elected Officials | Freight Mobility Strategic Investment Board | Board of Health | Eastern Washington State Historical Society | Economic Development Finance Authority |
| Environmental and Land Use Hearings Office - <i>Growth Management Hearings Board</i> - <i>Pollution Control Hearings Board</i> - <i>Shorelines Hearings Board</i> | Economic and Revenue Forecast Council | Board of Pilotage Commissioners | Health Care Facilities Authority | Governing Boards of Four-Year Institutions of Higher Education - <i>University of Washington</i> - <i>Washington State University</i> - <i>Central Washington University</i> - <i>Eastern Washington University</i> - <i>Western Washington University</i> - <i>The Evergreen State College</i> | Housing Finance Commission |
| Fish and Wildlife Commission | Gambling Commission | Transportation Improvement Board | Human Rights Commission | Higher Education Coordinating Board | Life Sciences Discovery Fund Authority |
| Board of Natural Resources | Horse Racing Commission Investment Board | Transportation Commission | Board of Industrial Insurance Appeals | Higher Education Facilities Authority | |
| Parks and Recreation Commission | Law Enforcement Officers' and Fire Fighters' Plan 2 Retirement System Board | | Tobacco Settlement Authority | Spokane Intercollegiate Research and Technology Institute | |
| Washington Materials Management and Financing Authority | Liquor Control Board | | | Boards of Trustees - <i>Community Colleges</i> - <i>Technical Colleges</i> | |
| | Pension Funding Council | | | Washington State Historical Society | |
| | Public Disclosure Commission | | | | |
| | Public Employment Relations Commission - <i>Marine Employees' Commission</i> | | | | |
| | Board of Tax Appeals | | | | |
| | Utilities and Transportation Commission | | | | |
| | Board for Volunteer Firefighters and Reserve Officers | | | | |

