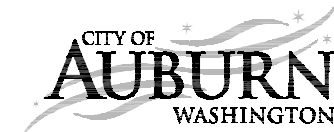


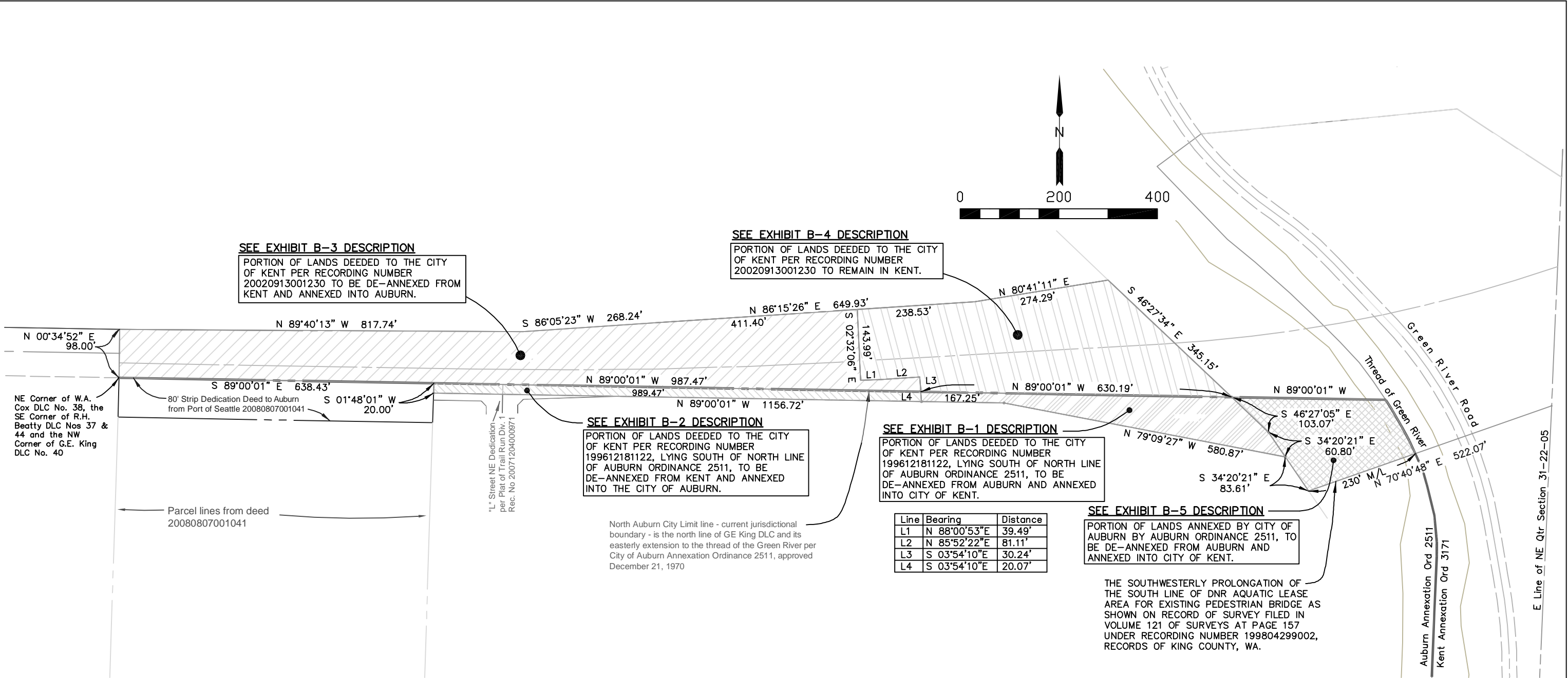
O:\SURVEY\PROJECTS\C222A-277thStreet(EastofAWN)\Annexation\Kent Annex near 86th - Aug 2014 Exhibit.dwg



CITY OF AUBURN
PUBLIC WORKS DEPARTMENT

EXHIBIT "A" MAP
AUBURN - KENT ANNEXATION EXHIBIT
SOUTH 277TH STREET CORRIDOR

PROJ: C222A0
August 6, 2014
SCALE: 1"=200'
DRAWN BY: RRB



NOTES:
1. Basis of bearings is Record of Survey filed in Volume 180 of Surveys at Pages 81 through 87, under recording number 20041214900004, records of King County, Washington.
2. This drawing was prepared by City of Auburn to accompany legal descriptions for annexation and de-annexation between the Cities of Auburn and Kent along the South 277th Street corridor.

D:\SURVEY\PROJECTS\C222A-277thStreet(EastofAWN)\Annexation\Proposed KC-Kent Annex Desc Feb 2013-14\KNT-AUB Annex B-W Exhibit Map.dwg



CITY OF AUBURN
PUBLIC WORKS DEPARTMENT

EXHIBIT "B" MAP
AUBURN - KENT ANNEXATION EXHIBIT
SOUTH 277TH STREET CORRIDOR

PROJ: C222A0
August 6, 2014
SCALE: 1"=200'
DRAWN BY: RRB