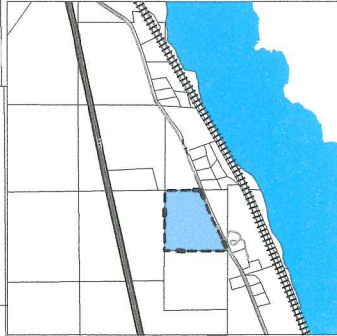


DRAFT UPDATED ZONING MAP

Starr Road Parcel Inset



Urban Growth Boundary

City Limits

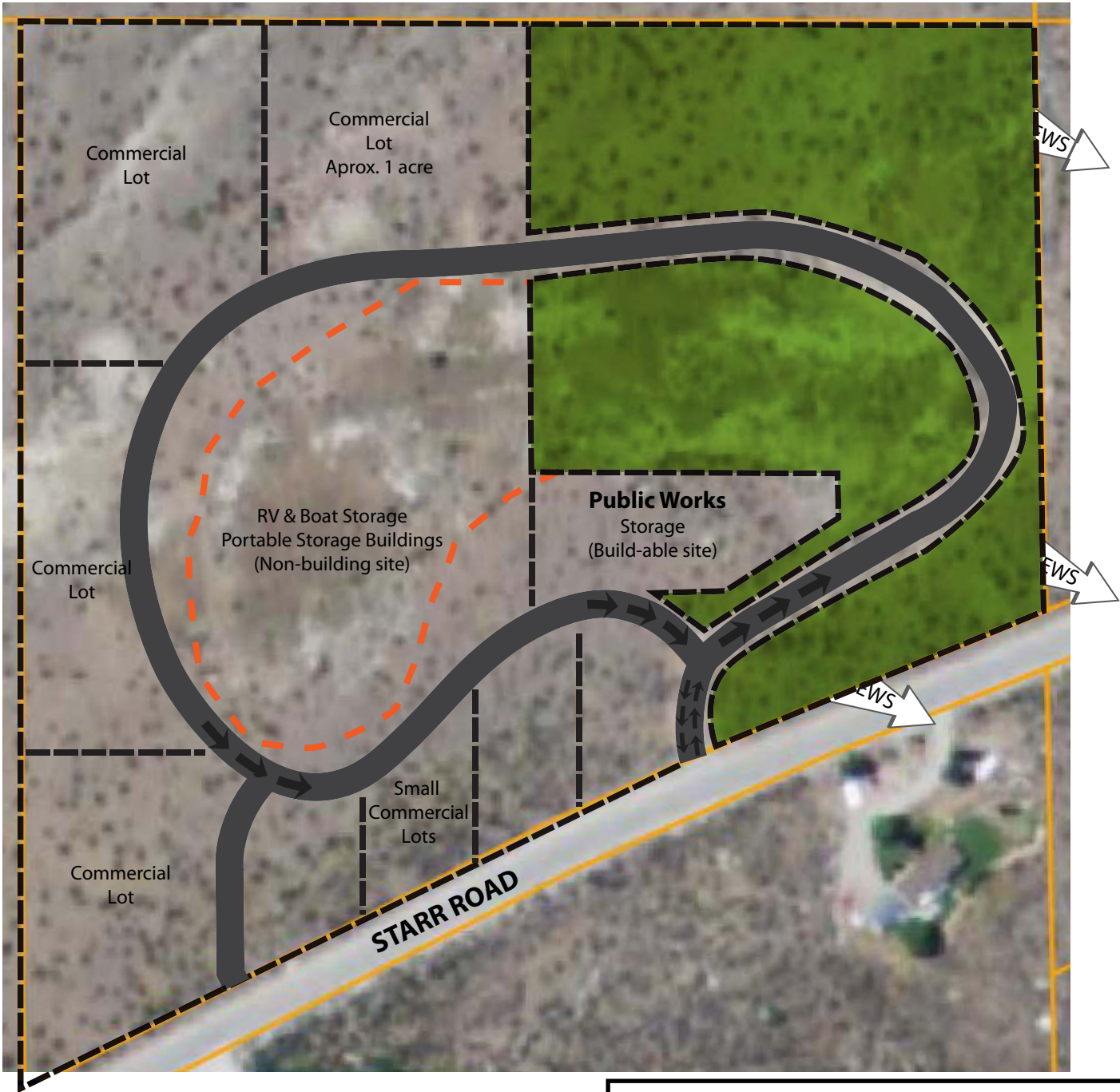
Urban Growth Boundary

City Limits

DRAFT Zoning

- CBD
- LI
- MU
- PU
- R1
- R2
- R3
- TCD

Exhibit A - 16.6 acres of undeveloped property south of town off Starr Rd, owned by City of Pateros.
Legal Description - Parcel #2923120015 Tax 15 pt Lot 3 (SE NE)



Notes:
16.6 Acre City Owned Site

Commercial lots outside landfill cells and are build-able

Public Works site would be an alternative storage site to the triangle property on industrial way

Aprx. Location of Landfill Cells

RV Park

Large Commercial Lots
aprx. 1 acre
Small Commercial Lots
aprx. 1/2 acre

***Starr Business District
&
Starr Road RV Park
Concept Development Plan***