

State of Washington

Forecast of the State Population

November 2022 Forecast

Forecasting & Research Division
Office of Financial Management
March 2023



To accommodate persons with disabilities, this document is available in alternative formats by calling the Office of Financial Management at 360-902-0555. TTY/TDD users should contact OFM via the Washington Relay Service at 711 or 1-800-833-6388.

VISIT OUR WEB SITE AT WWW.OFM.WA.GOV.

Table of Contents

1	Part 1: Discussion of forecast model assumptions
1	Fertility
1	Mortality
2	Net migration
2	Figure 1.1: Actual and predicted net migration, 1990–2050
3	Part 2: State population change expectations
3	Figure 2.1: Components of population change by decade, 1980–2050
4	Table 2.1: Components of population change, 2000–50
5	Part 3: Age-specific population findings
5	School-age population
5	Figure 3.1: Population characteristics ages 15–17
5	Table 3.1: Population ages 5–17
6	College-age population
6	Figure 3.2: Population characteristics ages 17–22
6	Table 3.2: Population ages 17–22
7	Senior population
7	Figure 3.3: Population characteristics ages 65 and older
7	Table 3.3: Population ages 65 and older
8	Most-elderly population
8	Figure 3.4: Population characteristics ages 85 and older
8	Table 3.4: Population ages 85 and older
9	Part 4: References
10	Part 5: Annual population estimates and forecasts, 2020–50

State population forecast by age and sex: 2020-50

Part 1: Discussion of forecast model assumptions

The Office of Financial Management's (OFM) state population forecast is produced using a cohort-component model. This is a sophisticated demographic accounting system that starts with the most recent decennial census counts by single year of age and gender, survives the age and sex-specific cohorts forward in time, incorporates fertility, mortality and migration trends, and forecasts the total population combining all these inputs. The November 2022 forecast incorporates updated forecast base data, a new forecast horizon, and revisions to the assumptions we used in the 2020 forecast model. Updated base data was only partially released at the time of the forecast. We will revise the base as more data becomes available from the 2020 census.

This document provides annual age and sex-specific population forecasts¹ from 2020-50. The most recent decennial census serves as the population base. The 2022 figures in this report use OFM's April 1 postcensal population estimates and vital statistics data from the Washington State Department of Health. The forecast years are 2023-50.

Fertility: The total fertility rate is at historic lows and we expect that to continue into the future, consistent with national trends. Based on the historical relationship between Washington's Total Fertility Rate and that of the United States, the forecast transitions to a TFR of 1.77 children per woman of childbearing age from the current TFR of 1.61. This is in line with the U.S. Census Bureau's 2017 forecasted trend in fertility (U.S. Census Bureau, 2017). Historically, the increase in women's labor force participation and educational attainment has played a major role in the decline of TFRs over time. Economic factors such as the recent recessions, wage stagnation and student loan debt may also be contributing to delayed childbearing and smaller families. We can see birth delays in the age-specific fertility rates, where rates for 15- to 19-year-old women have dropped dramatically over the past decade.

Recent decreases in fertility rates caused births to decline for the past five years. Between 2021 and 2022, approximately 85,000 births occurred in Washington. This is about 3,000 more than the previous year. As the population grows and the state continues to attract migrants at the working ages (ages 16-64), the number of births is forecast to grow, reaching 94,200 per year by 2035 and 103,800 by 2050. Washington fertility rates are highly influenced by migration, namely the state's Hispanic population and movers from overseas.

Mortality: The state forecast model uses life expectancy at birth to establish rates of mortality for the population. Historically, Washington has higher life expectancy at birth than the United States as a whole, and we expect this trend to continue. Washington's life expectancy is projected using trends for each sex over the past decade. Male life expectancy is projected to continue increasing faster

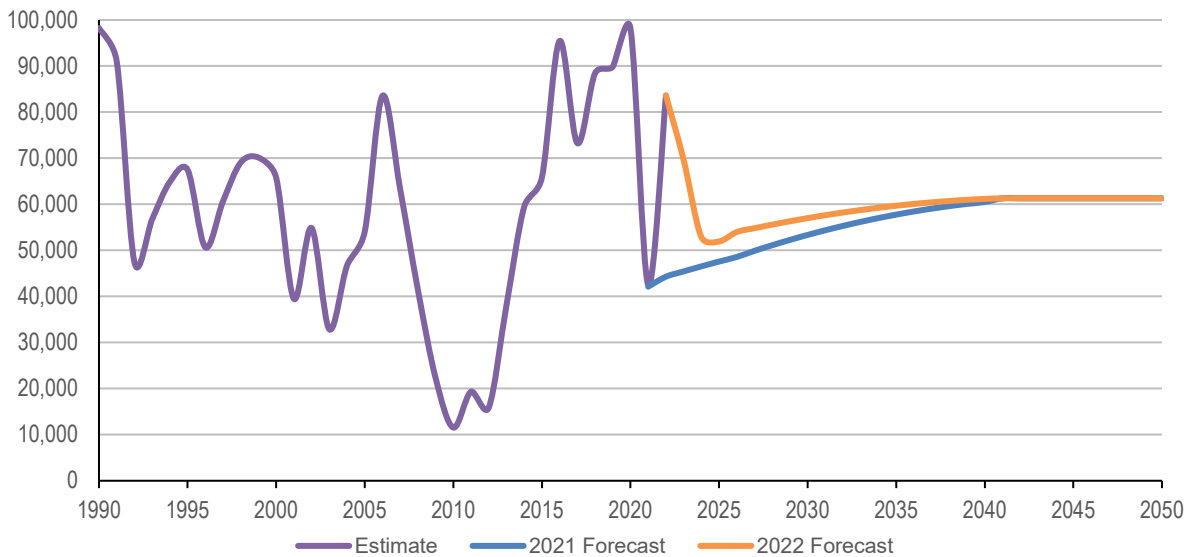
¹ *Population estimates* are figures developed for the current or prior years. Estimates are largely developed from administrative data sets that reflect population change. The assumptions in population estimates generally reflect statistically based and ratio-based relationships between population and indicator data such as housing, tax filers or voters. Thus, estimates are based on actual data and the assumption that previously established relationships will continue. *Population forecasts* are future population expectations. While growth assumptions are usually developed from prior growth trends, the forecast figures are not grounded on actual events and current data. Population forecasts are often developed from forecasts of specific data sets related to population change.

than female life expectancy, rising from 78.5 in 2020 to 84 in 2050, while females are projected to reach a life expectancy of 86.1 in 2050, up from 82.6. To account for near-term deaths due to COVID-19, 2023 life expectancies were reduced by 1.56 years for males and 1.18 for females. While experts have long accepted that females outlive males, the gender gap has narrowed in major developed countries over the past two decades. This is mostly due to lifestyle changes and advances in medicine (Mayhew & Smith, 2012).

Even with increases in life expectancy, deaths are projected to occur at an increasing rate. As Washington’s population continues to age, the state will experience higher mortality. Washington’s crude death rate is projected to rise from 7.7 deaths per 1,000 people in 2020 to 8.2 in 2030 and 9.9 by 2050.

Net migration: Net migration is an important, but difficult-to-predict component of population change. Although migration typically follows a cyclical pattern related to periods of economic expansion and contraction, some migration – such as military and retiree movement – is not entirely economic. To forecast near-term migration, OFM uses an econometric model that weighs Washington’s relative attractiveness to job seekers against California and other states. Near-term migration is then transitioned to a long-term migration average over a period of several years. For the present forecast, we applied a steep, downward adjustment to near-term migration. This accounted for the effects of the pandemic, the economic recession and changes in federal immigration policy.

Figure 1.1: Actual, estimated and predicted net migration, 1990–2050



We present estimated and predicted net migration values in Figure 1.1. The net migration estimate for 2022 is 83,600. That’s over 39,300 people higher than last year’s forecast. The migration estimate for 2022 is closer to those Washington saw at the end of the last decade. As we transition to a 2020 census-based forecast and add a decade to our forecast horizon, our forecast model relies less on the low migration trends from the 1980’s and relies more on the higher recent migration trends of the 2010s. As a result of those model changes, there is higher predicted migration throughout the

forecast period. Our forecast assumes that our current lower level of migration (due to the pandemic and pandemic related unemployment) will slowly increase until 2040 when we will hold the long-term annual migration assumption of 61,300 constant for the rest of the forecast horizon. For the 2025–35 period, net migration is over 37,808 people higher than the previous forecast. Our long-term (30-year) migration assumption for the 2040-2050 period is 12,600 higher than our previous long-term (30-year) migration assumption of 48,700 for the 2030-2040 period last decade.

Part 2: State population change expectations

The components of population change are births, deaths and migration. Natural increase is the number of births minus the number of deaths. Net migration is the difference between in- and out-migration. You can see the dynamic nature of population change in Washington in Figure 2.1, with additional detail in Table 2.1. Between 2020 and 2050, we expect Washington's population to grow by about 2,231,300 people, reaching 9,937,600 in 2050. Approximately 80%(1,788,200 people) of the increase is due to net migration, with the other 20%(443,000 people) due to natural increase.

We expect natural increase to decline from about 26,300 in 2020 to 5,900 by 2050. While births are projected to gradually increase over the forecast horizon, the number of deaths will rise sharply with as the baby boomer generation ages. In the future, state population growth will become more dependent upon migration as natural increase moderates.

Figure 2.1: Components of population change by decade, 1980–2050

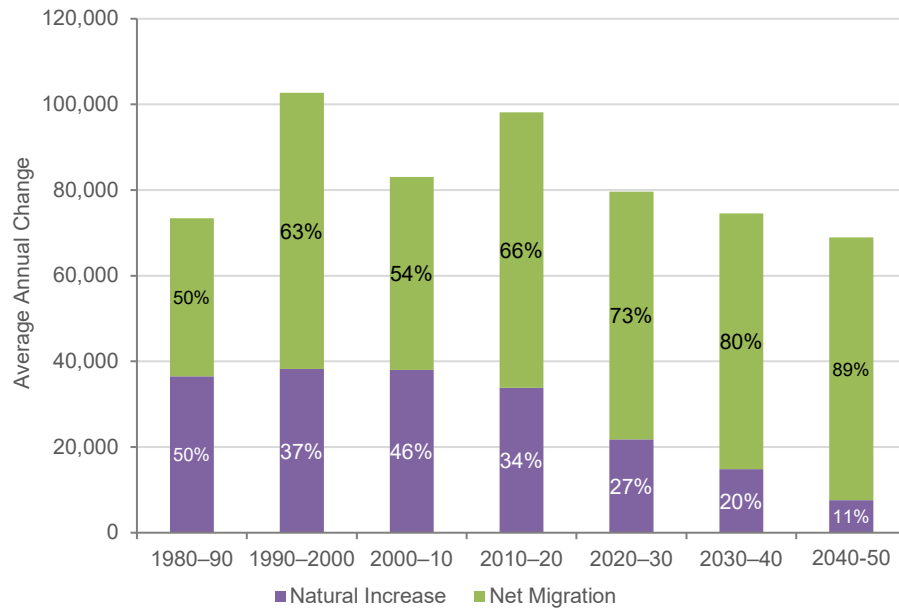


Table 2.1: Components of population change, 2010–50

	April 1 Population at End of Period	Population Change		Components of Change from Previous Period						
				Births		Deaths		Natural Increase	Net Migration	
		Number	Percentage	Number	Rate	Number	Rate	Number	Number	Rate
2010–11	6,781,477	56,937	0.85	86,383	12.79	48,786	7.22	37,597	19,340	2.86
2011–12	6,835,249	53,772	0.79	87,134	12.80	49,231	7.23	37,903	15,869	2.33
2012–13	6,909,445	74,196	1.09	87,250	12.70	51,109	7.44	36,141	38,055	5.54
2013–14	7,005,209	95,764	1.39	87,026	12.51	50,711	7.29	36,315	59,449	8.54
2014–15	7,106,620	101,411	1.45	88,479	12.54	52,848	7.49	35,631	65,780	9.32
2010–15		382,080		436,272		252,685		183,587	198,493	
2015–16	7,237,219	130,599	1.84	89,819	12.52	54,661	7.62	35,158	95,441	13.31
2016–17	7,344,073	106,854	1.48	89,664	12.30	56,075	7.69	33,589	73,265	10.05
2017–18	7,463,479	119,406	1.63	87,346	11.80	56,372	7.61	30,974	88,432	11.94
2018–19	7,581,818	118,339	1.59	85,708	11.39	57,205	7.60	28,503	89,836	11.94
2019–20	7,706,310	124,492	1.64	84,843	11.10	58,520	7.66	26,323	98,169	12.84
2015–20		599,690		437,380		282,833		154,547	445,143	
2020–21	7,766,975	60,665	0.79	82,100	10.61	63,978	8.27	18,122	42,543	5.50
2021–22	7,864,400	97,425	1.25	84,963	10.87	71,146	9.10	13,817	83,608	10.70
2022–23	7,951,628	87,228	1.11	87,205	11.03	69,643	8.81	17,562	69,666	8.81
2023–24	8,025,237	73,609	0.93	88,013	11.02	67,304	8.43	20,709	52,900	6.62
2024–25	8,100,384	75,147	0.94	88,586	10.99	65,372	8.11	23,214	51,933	6.44
2020–25		394,074		430,867		337,443		93,424	300,650	
2025–26	8,182,098	81,714	1.01	89,109	10.95	61,376	7.54	27,733	53,981	6.63
2026–27	8,263,311	81,213	0.99	89,602	10.90	63,196	7.69	26,406	54,807	6.67
2027–28	8,343,906	80,595	0.98	90,079	10.85	65,069	7.84	25,010	55,585	6.69
2028–29	8,423,752	79,846	0.96	90,548	10.80	67,017	7.99	23,531	56,315	6.72
2029–30	8,502,764	79,012	0.94	91,028	10.76	69,013	8.15	22,015	56,997	6.73
2025–30		402,380		450,366		325,671		124,695	277,685	
2030–31	8,580,887	78,123	0.92	91,550	10.72	71,058	8.32	20,492	57,631	6.75
2031–32	8,658,091	77,204	0.90	92,128	10.69	73,140	8.49	18,988	58,216	6.75
2032–33	8,734,406	76,315	0.88	92,766	10.67	75,205	8.65	17,561	58,754	6.76
2033–34	8,809,860	75,454	0.86	93,455	10.65	77,245	8.81	16,210	59,244	6.75
2034–35	8,884,512	74,652	0.85	94,197	10.65	79,230	8.96	14,967	59,685	6.75
2030–35		381,748		464,096		375,878		88,218	293,530	
2035–36	8,958,439	73,927	0.83	94,973	10.65	81,124	9.09	13,849	60,078	6.73
2036–37	9,031,726	73,287	0.82	95,795	10.65	82,932	9.22	12,863	60,424	6.72
2037–38	9,104,459	72,733	0.81	96,673	10.66	84,661	9.34	12,012	60,721	6.70
2038–39	9,176,702	72,243	0.79	97,569	10.67	86,296	9.44	11,273	60,970	6.67
2039–40	9,248,473	71,771	0.78	98,438	10.69	87,838	9.53	10,600	61,171	6.64
2035–40		363,961		483,448		422,851		60,597	303,364	
2040–41	9,319,691	71,218	0.77	99,198	10.68	89,280	9.62	9,918	61,300	6.60
2041–42	9,390,222	70,531	0.76	99,867	10.68	90,636	9.69	9,231	61,300	6.55
2042–43	9,460,164	69,942	0.74	100,540	10.67	91,898	9.75	8,642	61,300	6.50
2043–44	9,529,611	69,447	0.73	101,193	10.66	93,046	9.80	8,147	61,300	6.46
2044–45	9,598,597	68,986	0.72	101,796	10.64	94,110	9.84	7,686	61,300	6.41
2040–45		350,124		502,594		458,970		43,624	306,500	
2045–46	9,667,116	68,519	0.71	102,276	10.62	95,057	9.87	7,219	61,300	6.36
2046–47	9,735,181	68,065	0.70	102,667	10.58	95,902	9.89	6,765	61,300	6.32
2047–48	9,802,891	67,710	0.70	103,062	10.55	96,652	9.89	6,410	61,300	6.27
2048–49	9,870,328	67,437	0.69	103,460	10.52	97,323	9.89	6,137	61,300	6.23
2049–50	9,937,575	67,247	0.68	103,848	10.49	97,901	9.89	5,947	61,300	6.19
2045–50		338,978		515,313		482,835		32,478	306,500	
2020–50		3,213,035		3,720,336		2,939,166		781,170	2,431,865	

Notes: 1) Unrounded data should not be considered accurate to the last digit. 2) Rates computed per 1,000 population at midpoint of time. 3) Totals may not add due to rounding.

Part 3: Age-specific population findings

School-age population

People ages 5 through 17 represent the school-age population in kindergarten through 12th grade. There are an estimated 1,240,800 young people ages 5 to 17 in 2020. The school-age population has been increasing lately after a period of relatively little change the previous decade. We expect this trend to continue, with an average annual gain of approximately 7,000 people per year through 2025, which is when we expect the population to reach 1,275,800. This growth is partly due to the grandchildren of the baby boomer generation reaching school-age (the “third wave” of the baby boom). By 2050, the number of school-age people will be about 1,395,300.

Figure 3.1: Population characteristics ages 5–17

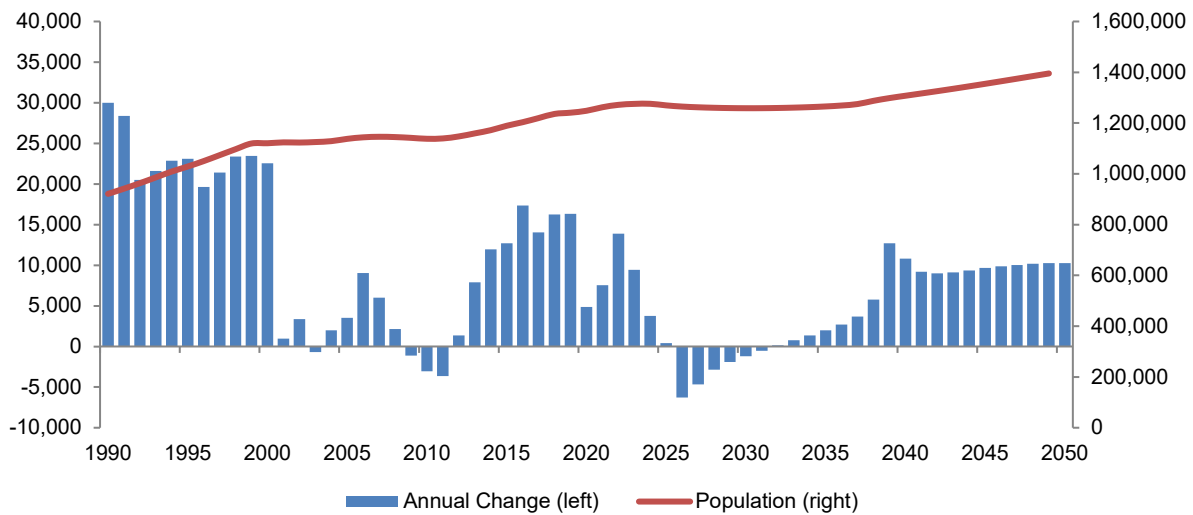


Table 3.1: Population ages 5–17

Year	Year	Year	Year	Year	Year	Year	Year	Year	Year		
1990	892,690	2001	1,120,486	2011	1,138,041	2021	1,248,336	2031	1,258,438	2041	1,307,529
1991	921,073	2002	1,123,863	2012	1,139,388	2022	1,262,222	2032	1,258,566	2042	1,316,525
1992	941,571	2003	1,123,183	2013	1,147,300	2023	1,271,662	2033	1,259,346	2043	1,325,633
1993	963,176	2004	1,125,174	2014	1,159,260	2024	1,275,443	2034	1,260,714	2044	1,334,984
1994	986,021	2005	1,128,718	2015	1,171,946	2025	1,275,849	2035	1,262,686	2045	1,344,640
1995	1,009,134	2006	1,137,756	2016	1,189,284	2026	1,269,578	2036	1,265,380	2046	1,354,517
1996	1,028,785	2007	1,143,750	2017	1,203,345	2027	1,264,904	2037	1,269,064	2047	1,364,555
1997	1,050,205	2008	1,145,885	2018	1,219,596	2028	1,262,067	2038	1,274,822	2048	1,374,743
1998	1,073,564	2009	1,144,749	2019	1,235,940	2029	1,260,165	2039	1,287,530	2049	1,385,019
1999	1,097,002	2010	1,141,697	2020	1,240,805	2030	1,258,963	2040	1,298,334	2050	1,395,285
2000	1,119,533										

Note: Departure from trend in 2020 is due to the partial rebasing of the forecast to 2020.

College-age population

People ages 17 through 22 comprise labor force entrants, young workers and the majority of students in postsecondary institutions. There are an estimated 567,000 people ages 17 through 22 in 2020. The number of people in this age group is expected to increase by 6,400 people per year through 2025, when the population will reach 598,800. After 2025, we expect this population to grow by an additional 51,000 people, reaching 649,800 by 2050, with most of the growth between 2025 to 2030 and 2044 to 2050.

Figure 3.2: Population characteristics ages 17–22

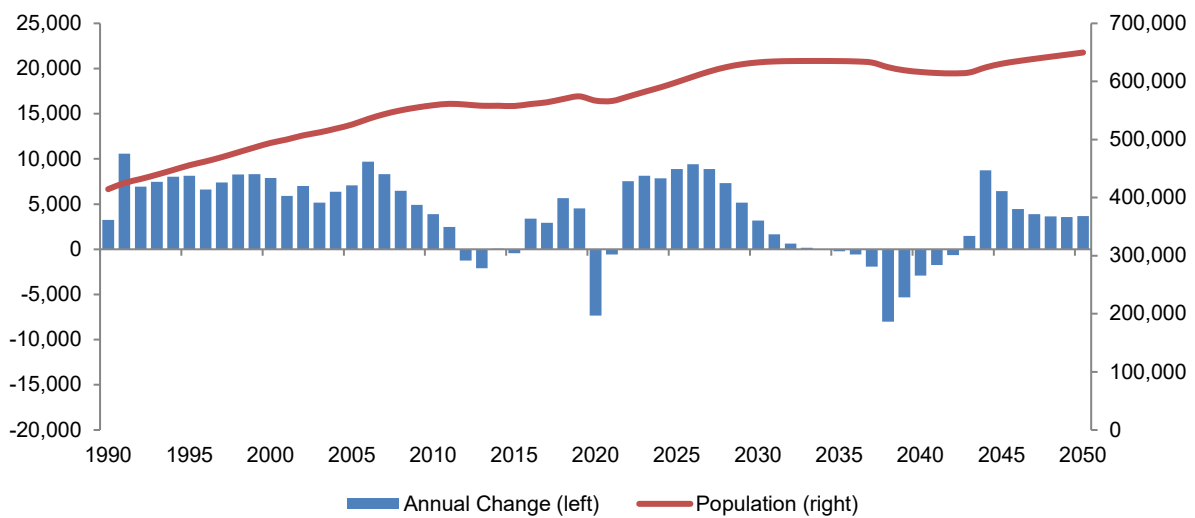


Table 3.2: Population ages 17–22

Year	Year	Year	Year	Year	Year	Year	Year	Year	Year		
1990	414,577	2001	500,143	2011	561,481	2021	566,393	2031	634,448	2041	614,557
1991	425,172	2002	507,153	2012	560,243	2022	573,923	2032	635,080	2042	613,907
1992	432,118	2003	512,313	2013	558,152	2023	582,075	2033	635,241	2043	615,391
1993	439,581	2004	518,680	2014	558,200	2024	589,936	2034	635,254	2044	624,131
1994	447,614	2005	525,768	2015	557,757	2025	598,805	2035	635,049	2045	630,585
1995	455,764	2006	535,454	2016	561,156	2026	608,232	2036	634,468	2046	635,021
1996	462,361	2007	543,761	2017	564,104	2027	617,125	2037	632,557	2047	638,903
1997	469,760	2008	550,250	2018	569,778	2028	624,443	2038	624,546	2048	642,553
1998	478,026	2009	555,147	2019	574,315	2029	629,594	2039	619,222	2049	646,134
1999	486,328	2010	559,017	2020	566,960	2030	632,784	2040	616,317	2050	649,811
2000	494,223										

Note: Departure from trend in 2020 is due to the partial rebasing of the forecast to 2020.

Senior population

Washington’s population is aging. This major demographic development will have important implications for policymaking and planning at all levels of government. In 2020, there are about 1,253,800 people ages 65 and older. This represents 16% of Washington’s total population. By 2050, the elderly population is forecasted to reach 2,299,700. This represents 23% of the state’s total population. The highest annual growth will occur between now and 2030. The sharp spike in the 65-and-older population in 2011 corresponds to a similarly sharp spike in births starting in 1946, exactly one year after American service members returned from World War II. These children of 1946 turned 65 in 2011, leading the baby boomer generation into retirement.

Figure 3.3: Population characteristics ages 65 and older

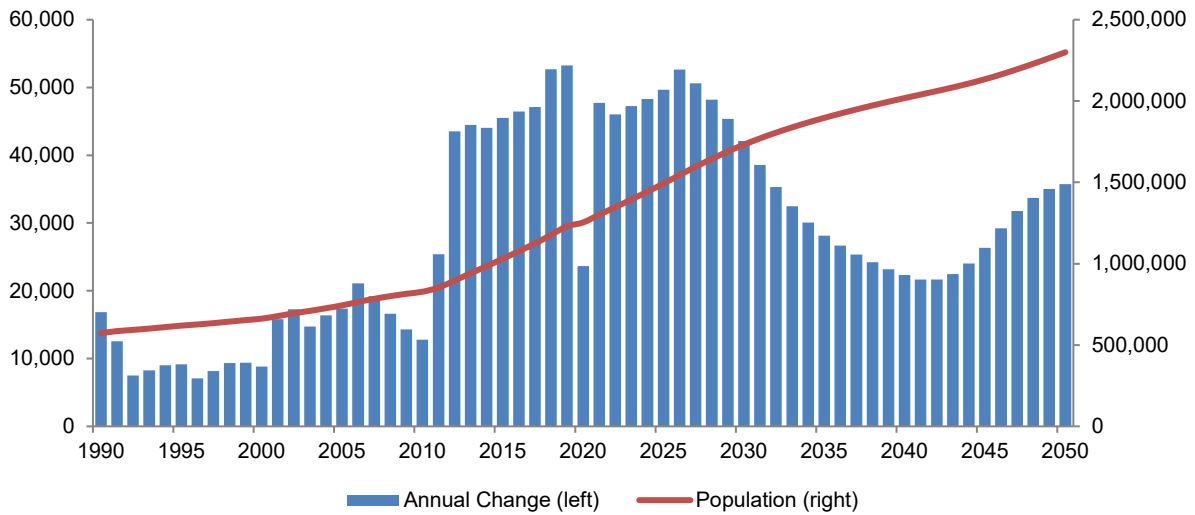


Table 3.3: Population ages 65 and older

Year	Year	Year	Year	Year	Year	Year	Year	Year	Year		
1990	572,914	2001	677,931	2011	853,055	2021	1,301,527	2031	1,770,298	2041	2,039,763
1991	585,458	2002	695,188	2012	896,574	2022	1,347,576	2032	1,805,627	2042	2,061,450
1992	592,968	2003	709,905	2013	941,063	2023	1,394,820	2033	1,838,108	2043	2,083,911
1993	601,202	2004	726,276	2014	985,115	2024	1,443,105	2034	1,868,199	2044	2,107,927
1994	610,213	2005	743,666	2015	1,030,627	2025	1,492,785	2035	1,896,355	2045	2,134,255
1995	619,382	2006	764,778	2016	1,077,082	2026	1,545,402	2036	1,923,017	2046	2,163,469
1996	626,444	2007	783,988	2017	1,124,207	2027	1,596,017	2037	1,948,383	2047	2,195,233
1997	634,606	2008	800,598	2018	1,176,903	2028	1,644,224	2038	1,972,590	2048	2,228,944
1998	643,934	2009	814,880	2019	1,230,134	2029	1,689,591	2039	1,995,782	2049	2,263,991
1999	653,311	2010	827,677	2020	1,253,787	2030	1,731,712	2040	2,018,092	2050	2,299,744
2000	662,142										

Note: Departure from trend in 2020 is due to the partial rebasing of the forecast to 2020.

Most-elderly population

Providing for the long-term care needs of the population ages 85 and older will have important fiscal implications for Washington and the nation. This population, numbering about 132,000 in 2020, is expected to increase by 418,200 people, reaching 550,200 by 2050. Much of this growth will occur after 2030 as the baby boom cohort starts to enter the most-elderly age group, with a 71,200 person increase from 2020–30 and a 347,000 person increase from 2030–50.

Figure 3.4: Population characteristics ages 85 and older

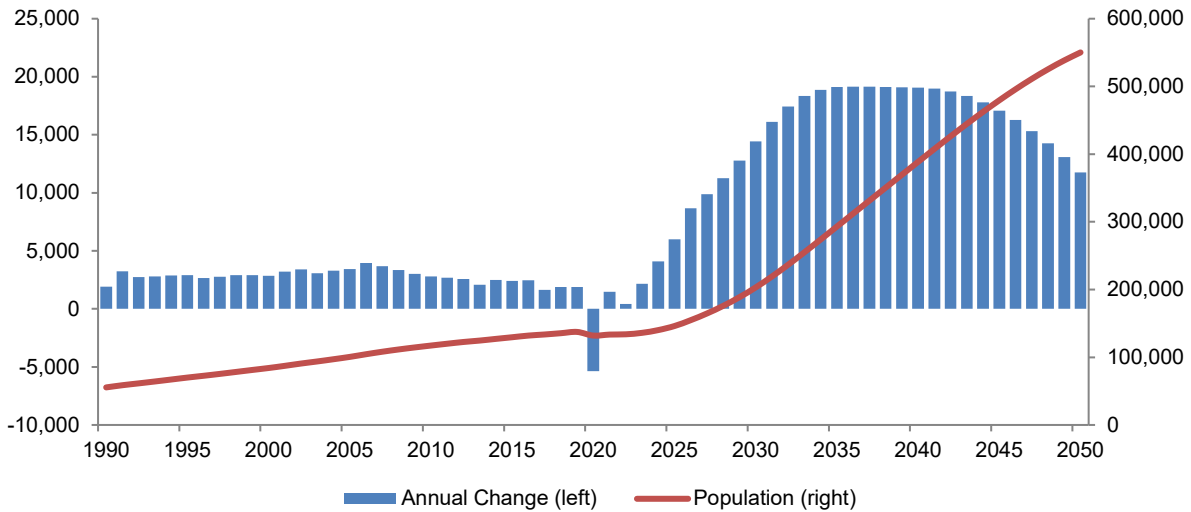


Table 3.4: Population ages 85 and older

Year	Year	Year	Year	Year	Year	Year	Year	Year	Year		
1990	55,463	2001	87,304	2011	119,966	2021	133,485	2031	219,289	2041	407,572
1991	58,688	2002	90,713	2012	122,546	2022	133,896	2032	236,722	2042	426,314
1992	61,416	2003	93,789	2013	124,626	2023	136,053	2033	255,055	2043	444,655
1993	64,212	2004	97,080	2014	127,125	2024	140,133	2034	273,932	2044	462,439
1994	67,088	2005	100,509	2015	129,543	2025	146,130	2035	293,048	2045	479,523
1995	69,983	2006	104,449	2016	132,001	2026	154,810	2036	312,200	2046	495,789
1996	72,635	2007	108,139	2017	133,625	2027	164,689	2037	331,331	2047	511,107
1997	75,406	2008	111,473	2018	135,507	2028	175,944	2038	350,443	2048	525,364
1998	78,315	2009	114,480	2019	137,391	2029	188,725	2039	369,539	2049	538,431
1999	81,232	2010	117,271	2020	132,014	2030	203,167	2040	388,598	2050	550,193
2000	84,083										

Note: Departure from trend in 2020 is due to the partial rebasing of the forecast to 2020.

Part 4: References

Mayhew, L., & Smith, D. (2012). Gender convergence in human survival and the postponement of death. Actuarial Research Paper No. 200. Retrieved from <http://openaccess.city.ac.uk/2331/1/200ARP.pdf>.

U.S. Census Bureau (2014). National Population Projections [Data files and code book]. Retrieved from <https://www.census.gov/data/datasets/2014/demo/popproj/2014-popproj.html>.

U.S. Census Bureau (2017). National Population Projections [Data files and code book]. Retrieved from <https://www.census.gov/data/datasets/2017/demo/popproj/2017-popproj.html>.

Part 5: Annual population estimates and forecasts, 2020–50

The following tables present annual population estimates and forecasts by age and sex for the years 2020–50. Figures for 2020 reflect 2010-based data controlled to newly released Census 2020 totals by age. Figures for years 2022 represent OFM’s postcensal estimates. The forecast years are 2023–50.

Population by Age and Sex
Population Census for April 1, 2020
State of Washington

5-Year Age Groups				Percentage of Total Population			
Age	Total	Male	Female	Age	Total	Male	Female
Total	7,706,310	3,862,636	3,843,674	Total	100.0000	50.1230	49.8770
0-4	447,807	229,258	218,549	0-4	5.8109	2.9749	2.8360
5-9	475,070	243,235	231,835	5-9	6.1647	3.1563	3.0084
10-14	486,192	249,255	236,937	10-14	6.3090	3.2344	3.0746
15-19	465,069	237,445	227,624	15-19	6.0349	3.0812	2.9537
20-24	495,495	255,595	239,900	20-24	6.4297	3.3167	3.1130
25-29	563,840	290,237	273,603	25-29	7.3166	3.7662	3.5504
30-34	563,472	290,416	273,056	30-34	7.3118	3.7685	3.5433
35-39	549,486	281,512	267,974	35-39	7.1303	3.6530	3.4773
40-44	490,531	249,459	241,072	40-44	6.3653	3.2371	3.1282
45-49	468,680	237,734	230,946	45-49	6.0818	3.0849	2.9968
50-54	469,397	237,445	231,952	50-54	6.0911	3.0812	3.0099
55-59	493,866	245,705	248,161	55-59	6.4086	3.1884	3.2202
60-64	483,618	237,104	246,514	60-64	6.2756	3.0768	3.1989
65-69	428,548	205,056	223,492	65-69	5.5610	2.6609	2.9001
70-74	341,720	162,315	179,405	70-74	4.4343	2.1063	2.3280
75-79	219,921	102,673	117,248	75-79	2.8538	1.3323	1.5215
80-84	131,584	58,718	72,866	80-84	1.7075	0.7619	0.9455
85+	132,014	49,474	82,540	85+	1.7131	0.6420	1.0711

Components of Change

	Total	Male	Female
Births	84,843	.	.
Deaths	58,520	.	.
Natural Increase	26,323	.	.
Migrants	98,169	.	.
Total Change	124,492	.	.

Components as % of Previous Year's Total Population

	Total	Male	Female
Births	1.1176	.	.
Deaths	0.7709	.	.
Natural Increase	0.3467	.	.
Net Migration	1.2931	.	.
Total Change	1.6399	.	.

Age Detail

Age	Total	Male	Female	Age	Total	Male	Female	Age	Total	Male	Female
0-24	2,369,633	1,214,788	1,154,845	12	97,775	50,161	47,614	60-65	574,759	281,084	293,675
0	86,775	44,453	42,322	13	97,041	49,730	47,311	60	99,154	48,956	50,198
1	88,298	45,219	43,079	14	95,772	48,994	46,778	61	98,333	48,422	49,911
2	89,690	45,916	43,774	15	94,166	48,063	46,103	62	97,122	47,658	49,464
3	90,951	46,548	44,403	16	92,979	47,396	45,583	63	95,505	46,651	48,854
4	92,093	47,122	44,971	17	92,398	47,108	45,290	64	93,504	45,417	48,087
5	93,114	47,638	45,476	18	92,437	47,202	45,235	65	91,141	43,980	47,161
6	94,098	48,150	45,948	19	93,089	47,676	45,413				
7	95,041	48,649	46,392	20	94,338	48,505	45,833				
8	95,963	49,150	46,813	21	96,162	49,587	46,575				
9	96,854	49,648	47,206	22	98,536	50,890	47,646				
10	97,635	50,091	47,544	23	101,473	52,422	49,051				
11	97,969	50,279	47,690	24	104,986	54,191	50,795				

Median Age

Total	Male	Female
38.2	37.4	39.1

Notes:

- 1) Unrounded data should not be considered accurate to the last digit.
- 2) Age detail data are provided to develop a variety of age groupings. Single year age values should not be considered reliable.
- 3) Totals may not add due to rounding.

Population by Age and Sex
Population Estimate for April 1, 2021
State of Washington

5-Year Age Groups

Age	Total	Male	Female
Total	7,766,975	3,892,611	3,874,364
0-4	439,865	225,175	214,690
5-9	473,879	242,533	231,346
10-14	490,054	251,354	238,700
15-19	470,684	240,231	230,453
20-24	488,890	251,628	237,262
25-29	560,054	288,252	271,802
30-34	570,169	293,782	276,387
35-39	557,914	286,232	271,682
40-44	502,538	255,804	246,734
45-49	470,520	238,552	231,968
50-54	466,141	235,976	230,165
55-59	488,088	243,243	244,845
60-64	486,652	238,883	247,769
65-69	437,550	209,685	227,865
70-74	356,058	168,639	187,419
75-79	236,089	110,194	125,895
80-84	138,345	61,937	76,408
85+	133,485	50,511	82,974

Percentage of Total Population

Age	Total	Male	Female
Total	100.0000	50.1175	49.8825
0-4	5.6633	2.8991	2.7641
5-9	6.1012	3.1226	2.9786
10-14	6.3095	3.2362	3.0733
15-19	6.0601	3.0930	2.9671
20-24	6.2945	3.2397	3.0548
25-29	7.2107	3.7113	3.4995
30-34	7.3409	3.7825	3.5585
35-39	7.1832	3.6852	3.4979
40-44	6.4702	3.2935	3.1767
45-49	6.0580	3.0714	2.9866
50-54	6.0016	3.0382	2.9634
55-59	6.2841	3.1318	3.1524
60-64	6.2657	3.0756	3.1900
65-69	5.6335	2.6997	2.9338
70-74	4.5843	2.1712	2.4130
75-79	3.0397	1.4188	1.6209
80-84	1.7812	0.7974	0.9838
85+	1.7186	0.6503	1.0683

Components of Change

	Total	Male	Female
Births	82,100	42,035	40,065
Deaths	63,978	33,630	30,348
Natural Increase	18,122	8,405	9,717
Net Migration	42,543	21,570	20,973
Total Change	60,665	29,975	30,690

Components as % of Previous Year's Total Population

	Total	Male	Female
Births	1.0654	0.5455	0.5199
Deaths	0.8302	0.4364	0.3938
Natural Increase	0.2352	0.1091	0.1261
Net Migration	0.5521	0.2799	0.2722
Total Change	0.7872	0.3890	0.3982

Age Detail

Age	Total	Male	Female	Age	Total	Male	Female	Age	Total	Male	Female
0-24	2,363,372	1,210,921	1,152,451	12	98,507	50,562	47,945	60-65	579,411	283,817	295,594
0	81,591	41,750	39,841	13	98,282	50,421	47,861	60	99,058	48,900	50,158
1	86,852	44,476	42,376	14	97,534	49,981	47,553	61	98,589	48,567	50,022
2	89,102	45,627	43,475	15	96,247	49,234	47,013	62	97,725	48,007	49,718
3	90,537	46,349	44,188	16	94,665	48,313	46,352	63	96,472	47,220	49,252
4	91,783	46,973	44,810	17	93,491	47,641	45,850	64	94,808	46,189	48,619
5	92,865	47,516	45,349	18	92,987	47,400	45,587	65	92,759	44,934	47,825
6	93,832	48,005	45,827	19	93,294	47,643	45,651				
7	94,797	48,507	46,290	20	93,992	48,144	45,848				
8	95,736	49,004	46,732	21	95,395	49,019	46,376				
9	96,649	49,501	47,148	22	97,234	50,090	47,144				
10	97,535	49,996	47,539	23	99,639	51,406	48,233				
11	98,196	50,394	47,802	24	102,630	52,969	49,661				

Median Age

Total	Male	Female
38.5	37.6	39.3

Notes:

- 1) Unrounded data should not be considered accurate to the last digit.
- 2) Age detail data are provided to develop a variety of age groupings. Single year age values should not be considered reliable.
- 3) Totals may not add due to rounding.

Population by Age and Sex
Population Estimate for April 1, 2022
State of Washington

5-Year Age Groups

Age	Total	Male	Female
Total	7,864,400	3,941,004	3,923,396
0-4	437,950	224,164	213,786
5-9	476,052	243,603	232,449
10-14	494,682	253,742	240,940
15-19	480,909	245,594	235,315
20-24	490,173	251,486	238,687
25-29	558,717	287,496	271,221
30-34	582,088	299,744	282,344
35-39	566,636	291,115	275,521
40-44	518,247	264,102	254,145
45-49	474,493	240,519	233,974
50-54	465,701	235,740	229,961
55-59	482,273	240,825	241,448
60-64	488,903	240,056	248,847
65-69	446,656	214,534	232,122
70-74	368,482	174,002	194,480
75-79	252,807	117,851	134,956
80-84	145,735	65,326	80,409
85+	133,896	51,105	82,791

Percentage of Total Population

Age	Total	Male	Female
Total	100.0000	50.1119	49.8881
0-4	5.5688	2.8504	2.7184
5-9	6.0533	3.0975	2.9557
10-14	6.2901	3.2265	3.0637
15-19	6.1150	3.1229	2.9922
20-24	6.2328	3.1978	3.0350
25-29	7.1044	3.6557	3.4487
30-34	7.4016	3.8114	3.5902
35-39	7.2051	3.7017	3.5034
40-44	6.5898	3.3582	3.2316
45-49	6.0334	3.0583	2.9751
50-54	5.9216	2.9976	2.9241
55-59	6.1324	3.0622	3.0701
60-64	6.2167	3.0524	3.1642
65-69	5.6795	2.7279	2.9516
70-74	4.6854	2.2125	2.4729
75-79	3.2146	1.4985	1.7160
80-84	1.8531	0.8307	1.0224
85+	1.7026	0.6498	1.0527

Components of Change

	Total	Male	Female
Births	84,963	43,501	41,462
Deaths	71,146	37,486	33,660
Natural Increase	13,817	6,015	7,802
Net Migration	83,608	42,378	41,230
Total Change	97,425	48,393	49,032

Components as % of Previous Year's Total Population

	Total	Male	Female
Births	1.0939	0.5601	0.5338
Deaths	0.9160	0.4826	0.4334
Natural Increase	0.1779	0.0774	0.1005
Net Migration	1.0765	0.5456	0.5308
Total Change	1.2543	0.6231	0.6313

Age Detail

Age	Total	Male	Female	Age	Total	Male	Female	Age	Total	Male	Female
0-24	2,379,766	1,218,589	1,161,177	12	99,259	50,953	48,306	60-65	583,161	285,835	297,326
0	84,393	43,182	41,211	13	99,517	51,080	48,437	60	98,796	48,770	50,026
1	82,114	42,000	40,114	14	99,275	50,930	48,345	61	98,687	48,589	50,098
2	88,479	45,305	43,174	15	98,501	50,473	48,028	62	98,175	48,226	49,949
3	90,782	46,487	44,295	16	97,270	49,752	47,518	63	97,273	47,642	49,631
4	92,182	47,190	44,992	17	95,717	48,822	46,895	64	95,972	46,829	49,143
5	93,307	47,752	45,555	18	94,698	48,247	46,451	65	94,258	45,779	48,479
6	94,283	48,241	46,042	19	94,723	48,300	46,423				
7	95,212	48,710	46,502	20	95,122	48,597	46,525				
8	96,165	49,206	46,959	21	96,117	49,187	46,930				
9	97,085	49,694	47,391	22	97,546	50,044	47,502				
10	97,990	50,187	47,803	23	99,444	51,142	48,302				
11	98,641	50,592	48,049	24	101,944	52,516	49,428				

Median Age

Total	Male	Female
38.6	37.8	39.5

Notes:

- 1) Unrounded data should not be considered accurate to the last digit.
- 2) Age detail data are provided to develop a variety of age groupings. Single year age values should not be considered reliable.
- 3) Totals may not add due to rounding.

**Population by Age and Sex
Population Forecast for April 1, 2023
State of Washington**

5-Year Age Groups

Age	Total	Male	Female
Total	7,951,628	3,983,784	3,967,844
0-4	436,789	223,519	213,270
5-9	476,983	244,081	232,902
10-14	497,075	254,888	242,187
15-19	490,489	250,762	239,727
20-24	491,731	251,526	240,205
25-29	553,118	284,514	268,604
30-34	592,081	304,639	287,442
35-39	573,443	294,952	278,491
40-44	534,176	272,563	261,613
45-49	479,588	243,127	236,461
50-54	466,308	235,922	230,386
55-59	475,936	238,187	237,749
60-64	489,091	240,196	248,895
65-69	454,684	218,924	235,760
70-74	379,574	178,801	200,773
75-79	269,808	125,527	144,281
80-84	154,701	69,368	85,333
85+	136,053	52,288	83,765

Percentage of Total Population

Age	Total	Male	Female
Total	100.0000	50.1002	49.8998
0-4	5.4931	2.8110	2.6821
5-9	5.9986	3.0696	2.9290
10-14	6.2512	3.2055	3.0458
15-19	6.1684	3.1536	3.0148
20-24	6.1840	3.1632	3.0208
25-29	6.9560	3.5781	3.3780
30-34	7.4460	3.8312	3.6149
35-39	7.2116	3.7093	3.5023
40-44	6.7178	3.4278	3.2901
45-49	6.0313	3.0576	2.9737
50-54	5.8643	2.9670	2.8973
55-59	5.9854	2.9954	2.9899
60-64	6.1508	3.0207	3.1301
65-69	5.7181	2.7532	2.9649
70-74	4.7735	2.2486	2.5249
75-79	3.3931	1.5786	1.8145
80-84	1.9455	0.8724	1.0732
85+	1.7110	0.6576	1.0534

Components of Change

	Total	Male	Female
Births	87,205	44,648	42,557
Deaths	69,643	37,174	32,469
Natural Increase	17,562	7,474	10,088
Net Migration	69,666	35,306	34,360
Total Change	87,228	42,780	44,448

Components as % of Previous Year's Total Population

	Total	Male	Female
Births	1.1089	0.5677	0.5411
Deaths	0.8855	0.4727	0.4129
Natural Increase	0.2233	0.0950	0.1283
Net Migration	0.8858	0.4489	0.4369
Total Change	1.1092	0.5440	0.5652

Age Detail

Age	Total	Male	Female	Age	Total	Male	Female	Age	Total	Male	Female
0-24	2,393,067	1,224,776	1,168,291	12	99,523	51,056	48,467	60-65	584,450	286,585	297,865
0	86,644	44,331	42,313	13	100,100	51,384	48,716	60	98,128	48,477	49,651
1	84,777	43,359	41,418	14	100,346	51,504	48,842	61	98,370	48,435	49,935
2	83,374	42,640	40,734	15	100,085	51,342	48,743	62	98,218	48,225	49,993
3	89,852	46,007	43,845	16	99,361	50,909	48,452	63	97,664	47,835	49,829
4	92,142	47,182	44,960	17	98,158	50,181	47,977	64	96,711	47,224	49,487
5	93,444	47,835	45,609	18	96,733	49,331	47,402	65	95,359	46,389	48,970
6	94,484	48,354	46,130	19	96,152	48,999	47,153				
7	95,426	48,825	46,601	20	96,247	49,092	47,155				
8	96,346	49,289	47,057	21	96,888	49,459	47,429				
9	97,283	49,778	47,505	22	97,897	50,028	47,869				
10	98,198	50,263	47,935	23	99,366	50,903	48,463				
11	98,908	50,681	48,227	24	101,333	52,044	49,289				

Median Age

Total	Male	Female
38.8	38.0	39.7

Notes:

- 1) Unrounded data should not be considered accurate to the last digit.
- 2) Age detail data are provided to develop a variety of age groupings. Single year age values should not be considered reliable.
- 3) Totals may not add due to rounding.

**Population by Age and Sex
Population Forecast for April 1, 2024
State of Washington**

5-Year Age Groups

Age	Total	Male	Female
Total	8,025,237	4,020,090	4,005,147
0-4	435,285	222,696	212,589
5-9	476,236	243,728	232,508
10-14	497,470	254,959	242,511
15-19	498,515	255,199	243,316
20-24	493,152	251,657	241,495
25-29	544,321	279,808	264,513
30-34	598,245	307,521	290,724
35-39	579,142	298,132	281,010
40-44	548,794	280,402	268,392
45-49	486,349	246,664	239,685
50-54	467,529	236,391	231,138
55-59	469,863	235,677	234,186
60-64	487,231	239,451	247,780
65-69	461,301	222,674	238,627
70-74	389,796	183,444	206,352
75-79	286,424	133,030	153,394
80-84	165,451	74,275	91,176
85+	140,133	54,382	85,751

Percentage of Total Population

Age	Total	Male	Female
Total	100.0000	50.0931	49.9069
0-4	5.4240	2.7749	2.6490
5-9	5.9342	3.0370	2.8972
10-14	6.1988	3.1770	3.0219
15-19	6.2118	3.1800	3.0319
20-24	6.1450	3.1358	3.0092
25-29	6.7826	3.4866	3.2960
30-34	7.4545	3.8319	3.6226
35-39	7.2165	3.7149	3.5016
40-44	6.8384	3.4940	3.3443
45-49	6.0602	3.0736	2.9866
50-54	5.8257	2.9456	2.8801
55-59	5.8548	2.9367	2.9181
60-64	6.0712	2.9837	3.0875
65-69	5.7481	2.7747	2.9735
70-74	4.8571	2.2858	2.5713
75-79	3.5690	1.6576	1.9114
80-84	2.0616	0.9255	1.1361
85+	1.7462	0.6776	1.0685

Components of Change

	Total	Male	Female
Births	88,013	45,062	42,951
Deaths	67,304	35,560	31,744
Natural Increase	20,709	9,502	11,207
Net Migration	52,900	26,804	26,096
Total Change	73,609	36,306	37,303

Components as % of Previous Year's Total Population

	Total	Male	Female
Births	1.1069	0.5667	0.5402
Deaths	0.8464	0.4472	0.3992
Natural Increase	0.2604	0.1195	0.1409
Net Migration	0.6653	0.3371	0.3282
Total Change	0.9257	0.4566	0.4691

Age Detail

Age	Total	Male	Female	Age	Total	Male	Female	Age	Total	Male	Female
0-24	2,400,658	1,228,239	1,172,419	12	99,574	51,031	48,543	60-65	583,268	286,222	297,046
0	87,482	44,765	42,717	13	100,157	51,381	48,776	60	97,040	48,025	49,015
1	86,853	44,422	42,431	14	100,727	51,705	49,022	61	97,651	48,133	49,518
2	85,742	43,849	41,893	15	100,960	51,816	49,144	62	97,847	48,062	49,785
3	84,344	43,135	41,209	16	100,739	51,673	49,066	63	97,650	47,825	49,825
4	90,864	46,525	44,339	17	100,038	51,236	48,802	64	97,043	47,406	49,637
5	93,089	47,665	45,424	18	98,935	50,570	48,365	65	96,037	46,771	49,266
6	94,330	48,288	46,042	19	97,843	49,904	47,939				
7	95,346	48,794	46,552	20	97,308	49,598	47,710				
8	96,282	49,262	47,020	21	97,583	49,740	47,843				
9	97,189	49,719	47,470	22	98,229	50,087	48,142				
10	98,122	50,206	47,916	23	99,260	50,665	48,595				
11	98,890	50,636	48,254	24	100,772	51,567	49,205				

Median Age

Total	Male	Female
39.0	38.2	39.9

Notes:

- 1) Unrounded data should not be considered accurate to the last digit.
- 2) Age detail data are provided to develop a variety of age groupings. Single year age values should not be considered reliable.
- 3) Totals may not add due to rounding.

**Population by Age and Sex
Population Forecast for April 1, 2025
State of Washington**

5-Year Age Groups

Age	Total	Male	Female
Total	8,100,384	4,057,577	4,042,807
0-4	435,600	222,815	212,785
5-9	474,189	242,720	231,469
10-14	497,312	254,730	242,582
15-19	505,209	258,925	246,284
20-24	496,740	253,129	243,611
25-29	536,228	275,266	260,962
30-34	600,699	308,581	292,118
35-39	585,814	301,673	284,141
40-44	561,350	287,239	274,111
45-49	495,927	251,719	244,208
50-54	469,455	237,238	232,217
55-59	465,253	233,795	231,458
60-64	483,823	238,107	245,716
65-69	466,706	225,797	240,909
70-74	399,749	188,284	211,465
75-79	302,060	140,071	161,989
80-84	178,140	80,117	98,023
85+	146,130	57,371	88,759

Percentage of Total Population

Age	Total	Male	Female
Total	100.0000	50.0912	49.9088
0-4	5.3775	2.7507	2.6269
5-9	5.8539	2.9964	2.8575
10-14	6.1394	3.1447	2.9947
15-19	6.2369	3.1965	3.0404
20-24	6.1323	3.1249	3.0074
25-29	6.6198	3.3982	3.2216
30-34	7.4157	3.8095	3.6062
35-39	7.2319	3.7242	3.5077
40-44	6.9299	3.5460	3.3839
45-49	6.1223	3.1075	3.0148
50-54	5.7955	2.9287	2.8667
55-59	5.7436	2.8862	2.8574
60-64	5.9728	2.9395	3.0334
65-69	5.7615	2.7875	2.9740
70-74	4.9349	2.3244	2.6106
75-79	3.7290	1.7292	1.9998
80-84	2.1992	0.9891	1.2101
85+	1.8040	0.7083	1.0957

Components of Change

	Total	Male	Female
Births	88,586	45,356	43,230
Deaths	65,372	34,181	31,191
Natural Increase	23,214	11,175	12,039
Net Migration	51,933	26,312	25,621
Total Change	75,147	37,487	37,660

Components as % of Previous Year's Total Population

	Total	Male	Female
Births	1.1038	0.5652	0.5387
Deaths	0.8146	0.4259	0.3887
Natural Increase	0.2893	0.1392	0.1500
Net Migration	0.6471	0.3279	0.3193
Total Change	0.9364	0.4671	0.4693

Age Detail

Age	Total	Male	Female	Age	Total	Male	Female	Age	Total	Male	Female
0-24	2,409,050	1,232,319	1,176,731	12	99,542	50,979	48,563	60-65	580,244	285,097	295,147
0	88,082	45,077	43,005	13	100,193	51,348	48,845	60	95,630	47,466	48,164
1	87,705	44,866	42,839	14	100,770	51,695	49,075	61	96,608	47,714	48,894
2	87,822	44,914	42,908	15	101,330	52,012	49,318	62	97,176	47,795	49,381
3	86,718	44,348	42,370	16	101,606	52,143	49,463	63	97,328	47,698	49,630
4	85,273	43,610	41,663	17	101,412	51,999	49,413	64	97,081	47,434	49,647
5	91,778	46,991	44,787	18	100,814	51,625	49,189	65	96,421	46,990	49,431
6	93,952	48,107	45,845	19	100,047	51,146	48,901				
7	95,171	48,718	46,453	20	98,996	50,502	48,494				
8	96,182	49,221	46,961	21	98,630	50,240	48,390				
9	97,106	49,683	47,423	22	98,906	50,359	48,547				
10	98,009	50,138	47,871	23	99,570	50,713	48,857				
11	98,798	50,570	48,228	24	100,638	51,315	49,323				

Median Age

Total	Male	Female
39.3	38.5	40.1

Notes:

- 1) Unrounded data should not be considered accurate to the last digit.
- 2) Age detail data are provided to develop a variety of age groupings. Single year age values should not be considered reliable.
- 3) Totals may not add due to rounding.

**Population by Age and Sex
Population Forecast for April 1, 2026
State of Washington**

5-Year Age Groups

Age	Total	Male	Female
Total	8,182,098	4,098,757	4,083,341
0-4	442,317	226,271	216,046
5-9	466,714	238,875	227,839
10-14	497,151	254,538	242,613
15-19	509,938	261,505	248,433
20-24	503,020	256,279	246,741
25-29	530,652	271,780	258,872
30-34	598,672	307,499	291,173
35-39	594,433	306,040	288,393
40-44	570,971	292,618	278,353
45-49	508,781	258,523	250,258
50-54	472,012	238,479	233,533
55-59	462,854	232,859	229,995
60-64	479,181	236,361	242,820
65-69	470,971	228,281	242,690
70-74	409,936	193,599	216,337
75-79	316,598	146,627	169,971
80-84	193,087	87,054	106,033
85+	154,810	61,569	93,241

Percentage of Total Population

Age	Total	Male	Female
Total	100.0000	50.0942	49.9058
0-4	5.4059	2.7654	2.6405
5-9	5.7041	2.9195	2.7846
10-14	6.0761	3.1109	2.9652
15-19	6.2324	3.1961	3.0363
20-24	6.1478	3.1322	3.0156
25-29	6.4855	3.3216	3.1639
30-34	7.3169	3.7582	3.5587
35-39	7.2650	3.7404	3.5247
40-44	6.9783	3.5763	3.4020
45-49	6.2182	3.1596	3.0586
50-54	5.7688	2.9146	2.8542
55-59	5.6569	2.8460	2.8110
60-64	5.8565	2.8888	2.9677
65-69	5.7561	2.7900	2.9661
70-74	5.0102	2.3661	2.6440
75-79	3.8694	1.7920	2.0774
80-84	2.3599	1.0640	1.2959
85+	1.8921	0.7525	1.1396

Components of Change

	Total	Male	Female
Births	89,109	45,623	43,486
Deaths	61,376	31,791	29,585
Natural Increase	27,733	13,832	13,901
Net Migration	53,981	27,348	26,633
Total Change	81,714	41,180	40,534

Components as % of Previous Year's Total Population

	Total	Male	Female
Births	1.1001	0.5632	0.5368
Deaths	0.7577	0.3925	0.3652
Natural Increase	0.3424	0.1708	0.1716
Net Migration	0.6664	0.3376	0.3288
Total Change	1.0088	0.5084	0.5004

Age Detail

Age	Total	Male	Female	Age	Total	Male	Female	Age	Total	Male	Female
0-24	2,419,140	1,237,468	1,181,672	12	99,472	50,924	48,548	60-65	575,747	283,445	292,302
0	88,650	45,371	43,279	13	100,185	51,308	48,877	60	94,055	46,855	47,200
1	88,369	45,214	43,155	14	100,830	51,674	49,156	61	95,285	47,211	48,074
2	88,728	45,387	43,341	15	101,396	52,014	49,382	62	96,224	47,433	48,791
3	88,861	45,445	43,416	16	102,005	52,355	49,650	63	96,755	47,492	49,263
4	87,709	44,854	42,855	17	102,312	52,486	49,826	64	96,862	47,370	49,492
5	86,162	44,064	42,098	18	102,232	52,412	49,820	65	96,566	47,084	49,482
6	92,661	47,443	45,218	19	101,993	52,238	49,755				
7	94,820	48,551	46,269	20	101,274	51,786	49,488				
8	96,036	49,160	46,876	21	100,398	51,185	49,213				
9	97,035	49,657	47,378	22	100,023	50,895	49,128				
10	97,955	50,117	47,838	23	100,313	51,018	49,295				
11	98,709	50,515	48,194	24	101,012	51,395	49,617				

Median Age

Total	Male	Female
39.6	38.8	40.4

Notes:

- 1) Unrounded data should not be considered accurate to the last digit.
- 2) Age detail data are provided to develop a variety of age groupings. Single year age values should not be considered reliable.
- 3) Totals may not add due to rounding.

**Population by Age and Sex
Population Forecast for April 1, 2027
State of Washington**

5-Year Age Groups

Age	Total	Male	Female
Total	8,263,311	4,139,712	4,123,599
0-4	447,184	228,786	218,398
5-9	461,747	236,299	225,448
10-14	496,894	254,359	242,535
15-19	512,853	263,010	249,843
20-24	511,057	260,535	250,522
25-29	527,677	269,519	258,158
30-34	592,848	304,507	288,341
35-39	603,878	310,727	293,151
40-44	578,216	296,765	281,451
45-49	523,742	266,466	257,276
50-54	475,463	240,235	235,228
55-59	462,190	232,618	229,572
60-64	473,545	234,229	239,316
65-69	473,508	229,825	243,683
70-74	419,469	198,788	220,681
75-79	329,463	152,408	177,055
80-84	208,888	94,349	114,539
85+	164,689	66,287	98,402

Percentage of Total Population

Age	Total	Male	Female
Total	100.0000	50.0975	49.9025
0-4	5.4117	2.7687	2.6430
5-9	5.5879	2.8596	2.7283
10-14	6.0133	3.0782	2.9351
15-19	6.2064	3.1829	3.0235
20-24	6.1847	3.1529	3.0317
25-29	6.3858	3.2616	3.1241
30-34	7.1745	3.6850	3.4894
35-39	7.3079	3.7603	3.5476
40-44	6.9974	3.5914	3.4060
45-49	6.3382	3.2247	3.1135
50-54	5.7539	2.9072	2.8467
55-59	5.5933	2.8151	2.7782
60-64	5.7307	2.8346	2.8961
65-69	5.7302	2.7813	2.9490
70-74	5.0763	2.4057	2.6706
75-79	3.9871	1.8444	2.1427
80-84	2.5279	1.1418	1.3861
85+	1.9930	0.8022	1.1908

Components of Change

	Total	Male	Female
Births	89,602	45,876	43,726
Deaths	63,196	32,684	30,512
Natural Increase	26,406	13,192	13,214
Net Migration	54,807	27,763	27,044
Total Change	81,213	40,955	40,258

Components as % of Previous Year's Total Population

	Total	Male	Female
Births	1.0951	0.5607	0.5344
Deaths	0.7724	0.3995	0.3729
Natural Increase	0.3227	0.1612	0.1615
Net Migration	0.6698	0.3393	0.3305
Total Change	0.9926	0.5005	0.4920

Age Detail

Age	Total	Male	Female	Age	Total	Male	Female	Age	Total	Male	Female
0-24	2,429,735	1,242,989	1,186,746	12	99,390	50,873	48,517	60-65	569,907	281,258	288,649
0	89,145	45,626	43,519	13	100,121	51,256	48,865	60	92,780	46,368	46,412
1	88,951	45,516	43,435	14	100,829	51,637	49,192	61	93,726	46,609	47,117
2	89,412	45,745	43,667	15	101,463	51,996	49,467	62	94,918	46,940	47,978
3	89,788	45,929	43,859	16	102,078	52,360	49,718	63	95,818	47,139	48,679
4	89,888	45,970	43,918	17	102,722	52,704	50,018	64	96,303	47,173	49,130
5	88,633	45,325	43,308	18	103,149	52,908	50,241	65	96,362	47,029	49,333
6	86,999	44,492	42,507	19	103,441	53,042	50,399				
7	93,528	47,886	45,642	20	103,258	52,899	50,359				
8	95,691	48,996	46,695	21	102,723	52,495	50,228				
9	96,896	49,600	47,296	22	101,832	51,860	49,972				
10	97,892	50,095	47,797	23	101,462	51,569	49,893				
11	98,662	50,498	48,164	24	101,782	51,712	50,070				

Median Age

Total	Male	Female
39.8	39.0	40.6

Notes:

- 1) Unrounded data should not be considered accurate to the last digit.
- 2) Age detail data are provided to develop a variety of age groupings. Single year age values should not be considered reliable.
- 3) Totals may not add due to rounding.

**Population by Age and Sex
Population Forecast for April 1, 2028
State of Washington**

5-Year Age Groups

Age	Total	Male	Female
Total	8,343,906	4,180,387	4,163,519
0-4	450,419	230,466	219,953
5-9	459,115	234,905	224,210
10-14	496,528	254,174	242,354
15-19	514,374	263,701	250,673
20-24	519,965	265,377	254,588
25-29	527,206	268,543	258,663
30-34	584,674	300,255	284,419
35-39	612,650	315,006	297,644
40-44	584,328	300,272	284,056
45-49	539,432	274,835	264,597
50-54	480,429	242,833	237,596
55-59	462,892	232,949	229,943
60-64	467,670	232,000	235,670
65-69	474,328	230,502	243,826
70-74	428,088	203,628	224,460
75-79	341,047	157,682	183,365
80-84	224,817	101,650	123,167
85+	175,944	71,609	104,335

Percentage of Total Population

Age	Total	Male	Female
Total	100.0000	50.1011	49.8989
0-4	5.3982	2.7621	2.6361
5-9	5.5024	2.8153	2.6871
10-14	5.9508	3.0462	2.9046
15-19	6.1647	3.1604	3.0043
20-24	6.2317	3.1805	3.0512
25-29	6.3185	3.2184	3.1000
30-34	7.0072	3.5985	3.4087
35-39	7.3425	3.7753	3.5672
40-44	7.0031	3.5987	3.4044
45-49	6.4650	3.2938	3.1711
50-54	5.7578	2.9103	2.8475
55-59	5.5477	2.7918	2.7558
60-64	5.6049	2.7805	2.8245
65-69	5.6847	2.7625	2.9222
70-74	5.1305	2.4404	2.6901
75-79	4.0874	1.8898	2.1976
80-84	2.6944	1.2183	1.4761
85+	2.1087	0.8582	1.2504

Components of Change

	Total	Male	Female
Births	90,079	46,120	43,959
Deaths	65,069	33,597	31,472
Natural Increase	25,010	12,523	12,487
Net Migration	55,585	28,152	27,433
Total Change	80,595	40,675	39,920

Components as % of Previous Year's Total Population

	Total	Male	Female
Births	1.0901	0.5581	0.5320
Deaths	0.7874	0.4066	0.3809
Natural Increase	0.3027	0.1515	0.1511
Net Migration	0.6727	0.3407	0.3320
Total Change	0.9753	0.4922	0.4831

Age Detail

Age	Total	Male	Female	Age	Total	Male	Female	Age	Total	Male	Female
0-24	2,440,401	1,248,623	1,191,778	12	99,349	50,859	48,490	60-65	563,488	278,841	284,647
0	89,625	45,872	43,753	13	100,045	51,208	48,837	60	91,922	46,036	45,886
1	89,457	45,777	43,680	14	100,770	51,587	49,183	61	92,464	46,131	46,333
2	90,011	46,056	43,955	15	101,469	51,962	49,507	62	93,373	46,348	47,025
3	90,491	46,297	44,194	16	102,153	52,346	49,807	63	94,529	46,656	47,873
4	90,835	46,464	44,371	17	102,802	52,712	50,090	64	95,382	46,829	48,553
5	90,843	46,457	44,386	18	103,569	53,131	50,438	65	95,818	46,841	48,977
6	89,501	45,769	43,732	19	104,381	53,550	50,831				
7	87,821	44,912	42,909	20	104,737	53,720	51,017				
8	94,395	48,329	46,066	21	104,750	53,630	51,120				
9	96,555	49,438	47,117	22	104,204	53,194	51,010				
10	97,759	50,041	47,718	23	103,311	52,554	50,757				
11	98,605	50,479	48,126	24	102,963	52,279	50,684				

Median Age

Total	Male	Female
40.1	39.3	40.9

Notes:

- 1) Unrounded data should not be considered accurate to the last digit.
- 2) Age detail data are provided to develop a variety of age groupings. Single year age values should not be considered reliable.
- 3) Totals may not add due to rounding.

**Population by Age and Sex
Population Forecast for April 1, 2029
State of Washington**

5-Year Age Groups

Age	Total	Male	Female
Total	8,423,752	4,220,738	4,203,014
0-4	453,238	231,925	221,313
5-9	457,800	234,181	223,619
10-14	495,902	253,889	242,013
15-19	514,937	263,854	251,083
20-24	528,819	270,257	258,562
25-29	529,120	268,897	260,223
30-34	575,727	295,493	280,234
35-39	619,287	318,146	301,141
40-44	590,391	303,668	286,723
45-49	554,466	282,913	271,553
50-54	487,554	246,595	240,959
55-59	464,574	233,722	230,852
60-64	462,346	229,990	232,356
65-69	473,433	230,379	243,054
70-74	435,512	207,883	227,629
75-79	351,711	162,690	189,021
80-84	240,210	108,653	131,557
85+	188,725	77,603	111,122

Percentage of Total Population

Age	Total	Male	Female
Total	100.0000	50.1052	49.8948
0-4	5.3805	2.7532	2.6272
5-9	5.4346	2.7800	2.6546
10-14	5.8869	3.0140	2.8730
15-19	6.1129	3.1323	2.9807
20-24	6.2777	3.2083	3.0694
25-29	6.2813	3.1921	3.0892
30-34	6.8346	3.5079	3.3267
35-39	7.3517	3.7768	3.5749
40-44	7.0086	3.6049	3.4037
45-49	6.5822	3.3585	3.2237
50-54	5.7878	2.9274	2.8605
55-59	5.5150	2.7746	2.7405
60-64	5.4886	2.7303	2.7583
65-69	5.6202	2.7349	2.8853
70-74	5.1700	2.4678	2.7022
75-79	4.1752	1.9313	2.2439
80-84	2.8516	1.2898	1.5617
85+	2.2404	0.9212	1.3192

Components of Change

	Total	Male	Female
Births	90,548	46,360	44,188
Deaths	67,017	34,528	32,489
Natural Increase	23,531	11,832	11,699
Net Migration	56,315	28,519	27,796
Total Change	79,846	40,351	39,495

Components as % of Previous Year's Total Population

	Total	Male	Female
Births	1.0852	0.5556	0.5296
Deaths	0.8032	0.4138	0.3894
Natural Increase	0.2820	0.1418	0.1402
Net Migration	0.6749	0.3418	0.3331
Total Change	0.9569	0.4836	0.4733

Age Detail

Age	Total	Male	Female	Age	Total	Male	Female	Age	Total	Male	Female
0-24	2,450,696	1,254,106	1,196,590	12	99,296	50,842	48,454	60-65	557,259	276,497	280,762
0	90,095	46,113	43,982	13	100,008	51,196	48,812	60	91,493	45,874	45,619
1	89,948	46,029	43,919	14	100,699	51,542	49,157	61	91,618	45,806	45,812
2	90,534	46,326	44,208	15	101,415	51,914	49,501	62	92,126	45,879	46,247
3	91,106	46,616	44,490	16	102,164	52,314	49,850	63	92,999	46,074	46,925
4	91,555	46,841	44,714	17	102,884	52,701	50,183	64	94,110	46,357	47,753
5	91,810	46,962	44,848	18	103,658	53,144	50,514	65	94,913	46,507	48,406
6	91,741	46,916	44,825	19	104,816	53,781	51,035				
7	90,352	46,203	44,149	20	105,700	54,241	51,459				
8	88,641	45,330	43,311	21	106,263	54,469	51,794				
9	95,256	48,770	46,486	22	106,273	54,351	51,922				
10	97,421	49,881	47,540	23	105,730	53,912	51,818				
11	98,478	50,428	48,050	24	104,853	53,284	51,569				

Median Age

Total	Male	Female
40.3	39.6	41.1

Notes:

- 1) Unrounded data should not be considered accurate to the last digit.
- 2) Age detail data are provided to develop a variety of age groupings. Single year age values should not be considered reliable.
- 3) Totals may not add due to rounding.

**Population by Age and Sex
Population Forecast for April 1, 2030
State of Washington**

5-Year Age Groups

Age	Total	Male	Female
Total	8,502,764	4,260,726	4,242,038
0-4	455,873	233,282	222,591
5-9	458,541	234,520	224,021
10-14	494,058	252,986	241,072
15-19	515,027	263,748	251,279
20-24	536,381	274,447	261,934
25-29	533,565	270,775	262,790
30-34	567,743	291,001	276,742
35-39	622,227	319,472	302,755
40-44	597,525	307,463	290,062
45-49	567,436	289,981	277,455
50-54	497,486	251,850	245,636
55-59	466,876	234,801	232,075
60-64	458,314	228,480	229,834
65-69	470,818	229,525	241,293
70-74	441,507	211,358	230,149
75-79	361,777	167,647	194,130
80-84	254,443	115,063	139,380
85+	203,167	84,327	118,840

Percentage of Total Population

Age	Total	Male	Female
Total	100.0000	50.1099	49.8901
0-4	5.3615	2.7436	2.6179
5-9	5.3928	2.7582	2.6347
10-14	5.8106	2.9753	2.8352
15-19	6.0572	3.1019	2.9553
20-24	6.3083	3.2277	3.0806
25-29	6.2752	3.1846	3.0906
30-34	6.6772	3.4224	3.2547
35-39	7.3179	3.7573	3.5607
40-44	7.0274	3.6160	3.4114
45-49	6.6735	3.4104	3.2631
50-54	5.8509	2.9620	2.8889
55-59	5.4909	2.7615	2.7294
60-64	5.3902	2.6871	2.7031
65-69	5.5372	2.6994	2.8378
70-74	5.1925	2.4858	2.7068
75-79	4.2548	1.9717	2.2831
80-84	2.9925	1.3532	1.6392
85+	2.3894	0.9918	1.3977

Components of Change

	Total	Male	Female
Births	91,028	46,606	44,422
Deaths	69,013	35,478	33,535
Natural Increase	22,015	11,128	10,887
Net Migration	56,997	28,860	28,137
Total Change	79,012	39,988	39,024

Components as % of Previous Year's Total Population

	Total	Male	Female
Births	1.0806	0.5533	0.5273
Deaths	0.8193	0.4212	0.3981
Natural Increase	0.2613	0.1321	0.1292
Net Migration	0.6766	0.3426	0.3340
Total Change	0.9380	0.4747	0.4633

Age Detail

Age	Total	Male	Female	Age	Total	Male	Female	Age	Total	Male	Female
0-24	2,459,880	1,258,983	1,200,897	12	99,173	50,793	48,380	60-65	551,973	274,526	277,447
0	90,578	46,361	44,217	13	99,959	51,181	48,778	60	91,461	45,868	45,593
1	90,429	46,276	44,153	14	100,667	51,533	49,134	61	91,199	45,651	45,548
2	91,039	46,585	44,454	15	101,348	51,871	49,477	62	91,292	45,562	45,730
3	91,643	46,893	44,750	16	102,115	52,269	49,846	63	91,766	45,614	46,152
4	92,184	47,167	45,017	17	102,901	52,672	50,229	64	92,596	45,785	46,811
5	92,543	47,345	45,198	18	103,747	53,136	50,611	65	93,659	46,046	47,613
6	92,723	47,429	45,294	19	104,916	53,800	51,116				
7	92,619	47,364	45,255	20	106,150	54,480	51,670				
8	91,201	46,636	44,565	21	107,251	55,003	52,248				
9	89,455	45,746	43,709	22	107,819	55,207	52,612				
10	96,117	49,210	46,907	23	107,842	55,091	52,751				
11	98,142	50,269	47,873	24	107,319	54,666	52,653				

Median Age

Total	Male	Female
40.6	39.8	41.3

Notes:

- 1) Unrounded data should not be considered accurate to the last digit.
- 2) Age detail data are provided to develop a variety of age groupings. Single year age values should not be considered reliable.
- 3) Totals may not add due to rounding.

**Population by Age and Sex
Population Forecast for April 1, 2031
State of Washington**

5-Year Age Groups

Age	Total	Male	Female
Total	8,580,887	4,300,352	4,280,535
0-4	458,451	234,608	223,843
5-9	465,808	238,259	227,549
10-14	486,401	249,046	237,355
15-19	515,011	263,627	251,384
20-24	541,702	277,339	264,363
25-29	540,650	274,316	266,334
30-34	562,160	287,482	274,678
35-39	620,309	318,455	301,854
40-44	606,493	312,013	294,480
45-49	577,298	295,493	281,805
50-54	510,542	258,759	251,783
55-59	469,593	236,141	233,452
60-64	456,171	227,706	228,465
65-69	466,576	228,026	238,550
70-74	445,892	213,913	231,979
75-79	371,420	172,660	198,760
80-84	267,121	120,718	146,403
85+	219,289	91,791	127,498

Percentage of Total Population

Age	Total	Male	Female
Total	100.0000	50.1155	49.8845
0-4	5.3427	2.7341	2.6086
5-9	5.4284	2.7766	2.6518
10-14	5.6684	2.9023	2.7661
15-19	6.0018	3.0723	2.9296
20-24	6.3129	3.2321	3.0808
25-29	6.3006	3.1968	3.1038
30-34	6.5513	3.3503	3.2010
35-39	7.2290	3.7112	3.5177
40-44	7.0680	3.6361	3.4318
45-49	6.7277	3.4436	3.2841
50-54	5.9498	3.0155	2.9342
55-59	5.4725	2.7519	2.7206
60-64	5.3161	2.6536	2.6625
65-69	5.4374	2.6574	2.7800
70-74	5.1963	2.4929	2.7034
75-79	4.3285	2.0121	2.3163
80-84	3.1130	1.4068	1.7062
85+	2.5556	1.0697	1.4858

Components of Change

	Total	Male	Female
Births	91,550	46,873	44,677
Deaths	71,058	36,430	34,628
Natural Increase	20,492	10,443	10,049
Net Migration	57,631	29,183	28,448
Total Change	78,123	39,626	38,497

Components as % of Previous Year's Total Population

	Total	Male	Female
Births	1.0767	0.5513	0.5254
Deaths	0.8357	0.4284	0.4073
Natural Increase	0.2410	0.1228	0.1182
Net Migration	0.6778	0.3432	0.3346
Total Change	0.9188	0.4660	0.4528

Age Detail

Age	Total	Male	Female	Age	Total	Male	Female	Age	Total	Male	Female
0-24	2,467,373	1,262,879	1,204,494	12	98,838	50,635	48,203	60-65	548,333	273,191	275,142
0	91,102	46,630	44,472	13	99,840	51,134	48,706	60	91,790	46,004	45,786
1	90,921	46,529	44,392	14	100,622	51,520	49,102	61	91,175	45,650	45,525
2	91,532	46,838	44,694	15	101,320	51,865	49,455	62	90,883	45,413	45,470
3	92,162	47,160	45,002	16	102,052	52,228	49,824	63	90,945	45,305	45,640
4	92,734	47,451	45,283	17	102,857	52,629	50,228	64	91,378	45,334	46,044
5	93,185	47,678	45,507	18	103,769	53,109	50,660	65	92,162	45,485	46,677
6	93,469	47,819	45,650	19	105,013	53,796	51,217				
7	93,616	47,885	45,731	20	106,259	54,503	51,756				
8	93,495	47,811	45,684	21	107,718	55,251	52,467				
9	92,043	47,066	44,977	22	108,832	55,754	53,078				
10	90,269	46,162	44,107	23	109,421	55,964	53,457				
11	96,832	49,595	47,237	24	109,472	55,867	53,605				

Median Age

Total	Male	Female
40.8	40.1	41.5

Notes:

- 1) Unrounded data should not be considered accurate to the last digit.
- 2) Age detail data are provided to develop a variety of age groupings. Single year age values should not be considered reliable.
- 3) Totals may not add due to rounding.

**Population by Age and Sex
Population Forecast for April 1, 2032
State of Washington**

5-Year Age Groups

Age	Total	Male	Female
Total	8,658,091	4,339,605	4,318,486
0-4	461,099	235,969	225,130
5-9	471,106	240,999	230,107
10-14	481,358	246,428	234,930
15-19	514,872	263,506	251,366
20-24	545,054	279,070	265,984
25-29	549,588	279,024	270,564
30-34	559,293	285,236	274,057
35-39	614,438	315,450	298,988
40-44	616,278	316,876	299,402
45-49	584,752	299,760	284,992
50-54	525,705	266,801	258,904
55-59	473,193	237,987	235,206
60-64	455,728	227,607	228,121
65-69	461,351	226,146	235,205
70-74	448,640	215,588	233,052
75-79	380,477	177,571	202,906
80-84	278,437	125,764	152,673
85+	236,722	99,823	136,899

Percentage of Total Population

Age	Total	Male	Female
Total	100.0000	50.1220	49.8780
0-4	5.3256	2.7254	2.6002
5-9	5.4412	2.7835	2.6577
10-14	5.5596	2.8462	2.7134
15-19	5.9467	3.0435	2.9032
20-24	6.2953	3.2232	3.0721
25-29	6.3477	3.2227	3.1250
30-34	6.4598	3.2944	3.1653
35-39	7.0967	3.6434	3.4533
40-44	7.1179	3.6599	3.4581
45-49	6.7538	3.4622	3.2916
50-54	6.0718	3.0815	2.9903
55-59	5.4653	2.7487	2.7166
60-64	5.2636	2.6288	2.6348
65-69	5.3286	2.6120	2.7166
70-74	5.1817	2.4900	2.6917
75-79	4.3945	2.0509	2.3435
80-84	3.2159	1.4526	1.7634
85+	2.7341	1.1529	1.5812

Components of Change

	Total	Male	Female
Births	92,128	47,169	44,959
Deaths	73,140	37,393	35,747
Natural Increase	18,988	9,776	9,212
Net Migration	58,216	29,477	28,739
Total Change	77,204	39,253	37,951

Components as % of Previous Year's Total Population

	Total	Male	Female
Births	1.0736	0.5497	0.5239
Deaths	0.8524	0.4358	0.4166
Natural Increase	0.2213	0.1139	0.1074
Net Migration	0.6784	0.3435	0.3349
Total Change	0.8997	0.4574	0.4423

Age Detail

Age	Total	Male	Female	Age	Total	Male	Female	Age	Total	Male	Female
0-24	2,473,489	1,265,972	1,207,517	12	97,522	49,958	47,564	60-65	546,688	272,651	274,037
0	91,681	46,927	44,754	13	99,505	50,976	48,529	60	92,234	46,203	46,031
1	91,454	46,803	44,651	14	100,504	51,474	49,030	61	91,511	45,791	45,720
2	92,035	47,097	44,938	15	101,278	51,854	49,424	62	90,867	45,417	45,450
3	92,666	47,419	45,247	16	102,027	52,224	49,803	63	90,546	45,162	45,384
4	93,263	47,723	45,540	17	102,797	52,589	50,208	64	90,570	45,034	45,536
5	93,746	47,968	45,778	18	103,729	53,068	50,661	65	90,960	45,044	45,916
6	94,121	48,157	45,964	19	105,041	53,771	51,270				
7	94,373	48,281	46,092	20	106,364	54,503	51,861				
8	94,505	48,339	46,166	21	107,836	55,278	52,558				
9	94,361	48,254	46,107	22	109,313	56,009	53,304				
10	92,885	47,496	45,389	23	110,457	56,523	53,934				
11	90,942	46,524	44,418	24	111,084	56,757	54,327				

Median Age

Total	Male	Female
41.0	40.4	41.8

Notes:

- 1) Unrounded data should not be considered accurate to the last digit.
- 2) Age detail data are provided to develop a variety of age groupings. Single year age values should not be considered reliable.
- 3) Totals may not add due to rounding.

**Population by Age and Sex
Population Forecast for April 1, 2033
State of Washington**

5-Year Age Groups

Age	Total	Male	Female
Total	8,734,406	4,378,499	4,355,907
0-4	463,900	237,408	226,492
5-9	474,668	242,850	231,818
10-14	478,755	245,045	233,710
15-19	514,602	263,372	251,230
20-24	546,881	279,914	266,967
25-29	559,422	284,341	275,081
30-34	559,037	284,331	274,706
35-39	606,121	311,132	294,989
40-44	625,349	321,310	304,039
45-49	591,058	303,377	287,681
50-54	541,588	275,266	266,322
55-59	478,298	240,664	237,634
60-64	456,619	228,062	228,557
65-69	455,884	224,166	231,718
70-74	449,752	216,444	233,308
75-79	388,706	182,169	206,537
80-84	288,711	130,421	158,290
85+	255,055	108,227	146,828

Percentage of Total Population

Age	Total	Male	Female
Total	100.0000	50.1293	49.8707
0-4	5.3112	2.7181	2.5931
5-9	5.4345	2.7804	2.6541
10-14	5.4813	2.8055	2.6757
15-19	5.8917	3.0153	2.8763
20-24	6.2612	3.2047	3.0565
25-29	6.4048	3.2554	3.1494
30-34	6.4004	3.2553	3.1451
35-39	6.9395	3.5621	3.3773
40-44	7.1596	3.6787	3.4809
45-49	6.7670	3.4734	3.2937
50-54	6.2006	3.1515	3.0491
55-59	5.4760	2.7554	2.7207
60-64	5.2278	2.6111	2.6167
65-69	5.2194	2.5665	2.6529
70-74	5.1492	2.4781	2.6711
75-79	4.4503	2.0856	2.3646
80-84	3.3054	1.4932	1.8123
85+	2.9201	1.2391	1.6810

Components of Change

	Total	Male	Female
Births	92,766	47,496	45,270
Deaths	75,205	38,344	36,861
Natural Increase	17,561	9,152	8,409
Net Migration	58,754	29,742	29,012
Total Change	76,315	38,894	37,421

Components as % of Previous Year's Total Population

	Total	Male	Female
Births	1.0714	0.5486	0.5229
Deaths	0.8686	0.4429	0.4257
Natural Increase	0.2028	0.1057	0.0971
Net Migration	0.6786	0.3435	0.3351
Total Change	0.8814	0.4492	0.4322

Age Detail

Age	Total	Male	Female	Age	Total	Male	Female	Age	Total	Male	Female
0-24	2,478,806	1,268,589	1,210,217	12	91,594	46,866	44,728	60-65	546,783	272,813	273,970
0	92,321	47,255	45,066	13	98,183	50,296	47,887	60	92,728	46,436	46,292
1	92,042	47,105	44,937	14	100,169	51,316	48,853	61	91,962	45,994	45,968
2	92,581	47,378	45,203	15	101,161	51,808	49,353	62	91,210	45,563	45,647
3	93,179	47,683	45,496	16	101,987	52,214	49,773	63	90,538	45,172	45,366
4	93,777	47,987	45,790	17	102,775	52,587	50,188	64	90,181	44,897	45,284
5	94,286	48,246	46,040	18	103,672	53,030	50,642	65	90,164	44,751	45,413
6	94,692	48,452	46,240	19	105,007	53,733	51,274				
7	95,034	48,623	46,411	20	106,398	54,481	51,917				
8	95,272	48,740	46,532	21	107,949	55,282	52,667				
9	95,384	48,789	46,595	22	109,440	56,039	53,401				
10	95,228	48,697	46,531	23	110,951	56,784	54,167				
11	93,581	47,870	45,711	24	112,143	57,328	54,815				

Median Age

Total	Male	Female
41.3	40.6	42.0

Notes:

- 1) Unrounded data should not be considered accurate to the last digit.
- 2) Age detail data are provided to develop a variety of age groupings. Single year age values should not be considered reliable.
- 3) Totals may not add due to rounding.

**Population by Age and Sex
Population Forecast for April 1, 2034
State of Washington**

5-Year Age Groups

Age	Total	Male	Female
Total	8,809,860	4,417,069	4,392,791
0-4	466,915	238,956	227,959
5-9	477,765	244,453	233,312
10-14	477,516	244,359	233,157
15-19	514,037	263,121	250,916
20-24	547,649	280,165	267,484
25-29	569,160	289,683	279,477
30-34	561,276	284,816	276,460
35-39	596,994	306,279	290,715
40-44	632,228	324,576	307,652
45-49	597,305	306,878	290,427
50-54	556,802	283,435	273,367
55-59	485,545	244,492	241,053
60-64	458,469	228,943	229,526
65-69	450,944	222,391	228,553
70-74	449,223	216,543	232,680
75-79	395,853	186,246	209,607
80-84	298,247	134,887	163,360
85+	273,932	116,846	157,086

Percentage of Total Population

Age	Total	Male	Female
Total	100.0000	50.1378	49.8622
0-4	5.2999	2.7124	2.5875
5-9	5.4231	2.7748	2.6483
10-14	5.4202	2.7737	2.6465
15-19	5.8348	2.9867	2.8481
20-24	6.2163	3.1801	3.0362
25-29	6.4605	3.2882	3.1723
30-34	6.3710	3.2329	3.1381
35-39	6.7764	3.4765	3.2999
40-44	7.1764	3.6842	3.4921
45-49	6.7800	3.4833	3.2966
50-54	6.3202	3.2172	3.1030
55-59	5.5114	2.7752	2.7362
60-64	5.2040	2.5987	2.6053
65-69	5.1186	2.5243	2.5943
70-74	5.0991	2.4580	2.6411
75-79	4.4933	2.1141	2.3792
80-84	3.3854	1.5311	1.8543
85+	3.1094	1.3263	1.7831

Components of Change

	Total	Male	Female
Births	93,455	47,848	45,607
Deaths	77,245	39,267	37,978
Natural Increase	16,210	8,581	7,629
Net Migration	59,244	29,989	29,255
Total Change	75,454	38,570	36,884

Components as % of Previous Year's Total Population

	Total	Male	Female
Births	1.0700	0.5478	0.5222
Deaths	0.8844	0.4496	0.4348
Natural Increase	0.1856	0.0982	0.0873
Net Migration	0.6783	0.3433	0.3349
Total Change	0.8639	0.4416	0.4223

Age Detail

Age	Total	Male	Female	Age	Total	Male	Female	Age	Total	Male	Female
0-24	2,483,882	1,271,054	1,212,828	12	94,253	48,222	46,031	60-65	548,254	273,564	274,690
0	93,011	47,608	45,403	13	92,217	47,185	45,032	60	93,272	46,708	46,564
1	92,690	47,438	45,252	14	98,840	50,632	48,208	61	92,460	46,230	46,230
2	93,179	47,685	45,494	15	100,826	51,650	49,176	62	91,668	45,770	45,898
3	93,735	47,969	45,766	16	101,871	52,168	49,703	63	90,889	45,323	45,566
4	94,300	48,256	46,044	17	102,736	52,578	50,158	64	90,180	44,912	45,268
5	94,808	48,514	46,294	18	103,652	53,029	50,623	65	89,785	44,621	45,164
6	95,240	48,734	46,506	19	104,952	53,696	51,256				
7	95,614	48,923	46,691	20	106,368	54,445	51,923				
8	95,942	49,087	46,855	21	107,987	55,261	52,726				
9	96,161	49,195	46,966	22	109,559	56,046	53,513				
10	96,262	49,238	47,024	23	111,086	56,818	54,268				
11	95,944	49,082	46,862	24	112,649	57,595	55,054				

Median Age

Total	Male	Female
41.5	40.9	42.2

Notes:

- 1) Unrounded data should not be considered accurate to the last digit.
- 2) Age detail data are provided to develop a variety of age groupings. Single year age values should not be considered reliable.
- 3) Totals may not add due to rounding.

**Population by Age and Sex
Population Forecast for April 1, 2035
State of Washington**

5-Year Age Groups

Age	Total	Male	Female
Total	8,884,512	4,455,350	4,429,162
0-4	470,188	240,636	229,552
5-9	480,643	245,937	234,706
10-14	478,397	244,771	233,626
15-19	512,196	262,224	249,972
20-24	547,878	280,121	267,757
25-29	577,466	294,267	283,199
30-34	566,160	286,896	279,264
35-39	588,851	301,696	287,155
40-44	635,307	325,976	309,331
45-49	604,630	310,781	293,849
50-54	569,935	290,587	279,348
55-59	495,586	249,803	245,783
60-64	460,920	230,118	230,802
65-69	447,254	221,090	226,164
70-74	447,049	215,951	231,098
75-79	401,705	189,626	212,079
80-84	307,299	139,331	167,968
85+	293,048	125,539	167,509

Percentage of Total Population

Age	Total	Male	Female
Total	100.0000	50.1474	49.8526
0-4	5.2922	2.7085	2.5837
5-9	5.4099	2.7682	2.6417
10-14	5.3846	2.7550	2.6296
15-19	5.7650	2.9515	2.8136
20-24	6.1667	3.1529	3.0138
25-29	6.4997	3.3121	3.1876
30-34	6.3724	3.2292	3.1433
35-39	6.6278	3.3958	3.2321
40-44	7.1507	3.6690	3.4817
45-49	6.8054	3.4980	3.3074
50-54	6.4149	3.2707	3.1442
55-59	5.5781	2.8117	2.7664
60-64	5.1879	2.5901	2.5978
65-69	5.0341	2.4885	2.5456
70-74	5.0318	2.4306	2.6011
75-79	4.5214	2.1343	2.3871
80-84	3.4588	1.5682	1.8906
85+	3.2984	1.4130	1.8854

Components of Change

	Total	Male	Female
Births	94,197	48,228	45,969
Deaths	79,230	40,161	39,069
Natural Increase	14,967	8,067	6,900
Net Migration	59,685	30,214	29,471
Total Change	74,652	38,281	36,371

Components as % of Previous Year's Total Population

	Total	Male	Female
Births	1.0692	0.5474	0.5218
Deaths	0.8993	0.4559	0.4435
Natural Increase	0.1699	0.0916	0.0783
Net Migration	0.6775	0.3430	0.3345
Total Change	0.8474	0.4345	0.4128

Age Detail

Age	Total	Male	Female	Age	Total	Male	Female	Age	Total	Male	Female
0-24	2,489,302	1,273,689	1,215,613	12	96,634	49,444	47,190	60-65	550,713	274,759	275,954
0	93,754	47,989	45,765	13	94,894	48,550	46,344	60	93,849	47,002	46,847
1	93,388	47,795	45,593	14	92,835	47,501	45,334	61	93,009	46,505	46,504
2	93,838	48,024	45,814	15	99,489	50,962	48,527	62	92,170	46,009	46,161
3	94,343	48,281	46,062	16	101,536	52,011	49,525	63	91,353	45,534	45,819
4	94,865	48,547	46,318	17	102,621	52,533	50,088	64	90,539	45,068	45,471
5	95,337	48,786	46,551	18	103,615	53,021	50,594	65	89,793	44,641	45,152
6	95,769	49,006	46,763	19	104,935	53,697	51,238				
7	96,169	49,209	46,960	20	106,314	54,409	51,905				
8	96,529	49,390	47,139	21	107,962	55,227	52,735				
9	96,839	49,546	47,293	22	109,602	56,027	53,575				
10	97,047	49,648	47,399	23	111,209	56,826	54,383				
11	96,987	49,628	47,359	24	112,791	57,632	55,159				

Median Age

Total	Male	Female
41.7	41.1	42.4

Notes:

- 1) Unrounded data should not be considered accurate to the last digit.
- 2) Age detail data are provided to develop a variety of age groupings. Single year age values should not be considered reliable.
- 3) Totals may not add due to rounding.

**Population by Age and Sex
Population Forecast for April 1, 2036
State of Washington**

5-Year Age Groups

Age	Total	Male	Female
Total	8,958,439	4,493,375	4,465,064
0-4	473,708	242,442	231,266
5-9	483,441	247,378	236,063
10-14	486,019	248,694	237,325
15-19	504,319	258,171	246,148
20-24	547,959	280,045	267,914
25-29	583,326	297,441	285,885
30-34	573,819	290,725	283,094
35-39	583,181	298,112	285,069
40-44	633,405	324,975	308,430
45-49	613,798	315,438	298,360
50-54	579,941	296,177	283,764
55-59	508,734	256,752	251,982
60-64	463,772	231,544	232,228
65-69	445,400	220,498	224,902
70-74	443,315	214,742	228,573
75-79	406,100	192,182	213,918
80-84	316,002	143,832	172,170
85+	312,200	134,227	177,973

Percentage of Total Population

Age	Total	Male	Female
Total	100.0000	50.1580	49.8420
0-4	5.2878	2.7063	2.5815
5-9	5.3965	2.7614	2.6351
10-14	5.4253	2.7761	2.6492
15-19	5.6295	2.8819	2.7477
20-24	6.1167	3.1260	2.9906
25-29	6.5115	3.3202	3.1912
30-34	6.4053	3.2453	3.1601
35-39	6.5099	3.3277	3.1821
40-44	7.0705	3.6276	3.4429
45-49	6.8516	3.5211	3.3305
50-54	6.4737	3.3061	3.1676
55-59	5.6788	2.8660	2.8128
60-64	5.1769	2.5846	2.5923
65-69	4.9718	2.4613	2.5105
70-74	4.9486	2.3971	2.5515
75-79	4.5332	2.1453	2.3879
80-84	3.5274	1.6055	1.9219
85+	3.4850	1.4983	1.9867

Components of Change

	Total	Male	Female
Births	94,973	48,626	46,347
Deaths	81,124	41,011	40,113
Natural Increase	13,849	7,615	6,234
Net Migration	60,078	30,410	29,668
Total Change	73,927	38,025	35,902

Components as % of Previous Year's Total Population

	Total	Male	Female
Births	1.0690	0.5473	0.5217
Deaths	0.9131	0.4616	0.4515
Natural Increase	0.1559	0.0857	0.0702
Net Migration	0.6762	0.3423	0.3339
Total Change	0.8321	0.4280	0.4041

Age Detail

Age	Total	Male	Female	Age	Total	Male	Female	Age	Total	Male	Female
0-24	2,495,446	1,276,730	1,218,716	12	97,685	49,994	47,691	60-65	553,931	276,346	277,585
0	94,531	48,388	46,143	13	97,293	49,781	47,512	60	94,588	47,395	47,193
1	94,138	48,180	45,958	14	95,530	48,875	46,655	61	93,591	46,802	46,789
2	94,546	48,386	46,160	15	93,445	47,811	45,634	62	92,725	46,288	46,437
3	95,012	48,625	46,387	16	100,191	51,318	48,873	63	91,859	45,776	46,083
4	95,481	48,863	46,618	17	102,284	52,375	49,909	64	91,009	45,283	45,726
5	95,910	49,081	46,829	18	103,500	52,977	50,523	65	90,159	44,802	45,357
6	96,304	49,281	47,023	19	104,899	53,690	51,209				
7	96,704	49,484	47,220	20	106,299	54,411	51,888				
8	97,091	49,680	47,411	21	107,908	55,191	52,717				
9	97,432	49,852	47,580	22	109,578	55,993	53,585				
10	97,733	50,003	47,730	23	111,256	56,809	54,447				
11	97,778	50,041	47,737	24	112,918	57,641	55,277				

Median Age

Total	Male	Female
42.0	41.3	42.6

Notes:

- 1) Unrounded data should not be considered accurate to the last digit.
- 2) Age detail data are provided to develop a variety of age groupings. Single year age values should not be considered reliable.
- 3) Totals may not add due to rounding.

**Population by Age and Sex
Population Forecast for April 1, 2037
State of Washington**

5-Year Age Groups

Age	Total	Male	Female
Total	9,031,726	4,531,197	4,500,529
0-4	477,468	244,372	233,096
5-9	486,291	248,844	237,447
10-14	491,580	251,571	240,009
15-19	499,138	255,482	243,656
20-24	547,881	279,956	267,925
25-29	587,030	299,349	287,681
30-34	583,411	295,777	287,634
35-39	580,307	295,838	284,469
40-44	627,465	321,945	305,520
45-49	623,782	320,405	303,377
50-54	587,523	300,518	287,005
55-59	523,980	264,825	259,155
60-64	467,487	233,464	234,023
65-69	445,193	220,550	224,643
70-74	438,638	213,170	225,468
75-79	409,001	193,948	215,053
80-84	324,220	148,259	175,961
85+	331,331	142,924	188,407

Percentage of Total Population

Age	Total	Male	Female
Total	100.0000	50.1698	49.8302
0-4	5.2866	2.7057	2.5809
5-9	5.3843	2.7552	2.6290
10-14	5.4428	2.7854	2.6574
15-19	5.5265	2.8287	2.6978
20-24	6.0662	3.0997	2.9665
25-29	6.4996	3.3144	3.1852
30-34	6.4596	3.2749	3.1847
35-39	6.4252	3.2755	3.1497
40-44	6.9473	3.5646	3.3827
45-49	6.9066	3.5476	3.3590
50-54	6.5051	3.3274	3.1777
55-59	5.8015	2.9322	2.8694
60-64	5.1761	2.5849	2.5911
65-69	4.9292	2.4419	2.4873
70-74	4.8566	2.3602	2.4964
75-79	4.5285	2.1474	2.3811
80-84	3.5898	1.6415	1.9483
85+	3.6685	1.5825	2.0861

Components of Change

	Total	Male	Female
Births	95,795	49,047	46,748
Deaths	82,932	41,818	41,114
Natural Increase	12,863	7,229	5,634
Net Migration	60,424	30,593	29,831
Total Change	73,287	37,822	35,465

Components as % of Previous Year's Total Population

	Total	Male	Female
Births	1.0693	0.5475	0.5218
Deaths	0.9257	0.4668	0.4589
Natural Increase	0.1436	0.0807	0.0629
Net Migration	0.6745	0.3415	0.3330
Total Change	0.8181	0.4222	0.3959

Age Detail

Age	Total	Male	Female	Age	Total	Male	Female	Age	Total	Male	Female
0-24	2,502,358	1,280,225	1,222,133	12	98,482	50,410	48,072	60-65	558,122	278,485	279,637
0	95,353	48,810	46,543	13	98,351	50,335	48,016	60	95,900	48,089	47,811
1	94,922	48,583	46,339	14	97,946	50,115	47,831	61	94,335	47,199	47,136
2	95,306	48,776	46,530	15	96,159	49,195	46,964	62	93,312	46,589	46,723
3	95,729	48,992	46,737	16	94,104	48,145	45,959	63	92,420	46,058	46,362
4	96,158	49,211	46,947	17	100,930	51,678	49,252	64	91,520	45,529	45,991
5	96,533	49,401	47,132	18	103,162	52,818	50,344	65	90,635	45,021	45,614
6	96,883	49,579	47,304	19	104,783	53,646	51,137				
7	97,245	49,762	47,483	20	106,263	54,404	51,859				
8	97,631	49,957	47,674	21	107,894	55,194	52,700				
9	97,999	50,145	47,854	22	109,525	55,958	53,567				
10	98,332	50,312	48,020	23	111,232	56,775	54,457				
11	98,469	50,399	48,070	24	112,967	57,625	55,342				

Median Age

Total	Male	Female
42.1	41.5	42.8

Notes:

- 1) Unrounded data should not be considered accurate to the last digit.
- 2) Age detail data are provided to develop a variety of age groupings. Single year age values should not be considered reliable.
- 3) Totals may not add due to rounding.

**Population by Age and Sex
Population Forecast for April 1, 2038
State of Washington**

5-Year Age Groups

Age	Total	Male	Female
Total	9,104,459	4,568,845	4,535,614
0-4	481,465	246,422	235,043
5-9	489,278	250,378	238,900
10-14	495,318	253,515	241,803
15-19	496,463	254,064	242,399
20-24	547,631	279,836	267,795
25-29	589,062	300,290	288,772
30-34	593,914	301,454	292,460
35-39	580,117	294,944	285,173
40-44	619,020	317,569	301,451
45-49	633,030	324,933	308,097
50-54	593,952	304,209	289,743
55-59	539,927	273,310	266,617
60-64	472,692	236,200	236,492
65-69	446,274	221,132	225,142
70-74	433,728	211,500	222,228
75-79	410,407	194,978	215,429
80-84	331,738	152,430	179,308
85+	350,443	151,681	198,762

Percentage of Total Population

Age	Total	Male	Female
Total	100.0000	50.1825	49.8175
0-4	5.2882	2.7066	2.5816
5-9	5.3740	2.7501	2.6240
10-14	5.4404	2.7845	2.6559
15-19	5.4530	2.7905	2.6624
20-24	6.0150	3.0736	2.9414
25-29	6.4700	3.2983	3.1718
30-34	6.5233	3.3111	3.2123
35-39	6.3718	3.2396	3.1322
40-44	6.7991	3.4881	3.3110
45-49	6.9530	3.5689	3.3840
50-54	6.5237	3.3413	3.1824
55-59	5.9304	3.0019	2.9284
60-64	5.1919	2.5943	2.5975
65-69	4.9017	2.4288	2.4729
70-74	4.7639	2.3230	2.4409
75-79	4.5078	2.1416	2.3662
80-84	3.6437	1.6742	1.9695
85+	3.8491	1.6660	2.1831

Components of Change

	Total	Male	Female
Births	96,673	49,496	47,177
Deaths	84,661	42,592	42,069
Natural Increase	12,012	6,904	5,108
Net Migration	60,721	30,744	29,977
Total Change	72,733	37,648	35,085

Components as % of Previous Year's Total Population

	Total	Male	Female
Births	1.0704	0.5480	0.5223
Deaths	0.9374	0.4716	0.4658
Natural Increase	0.1330	0.0764	0.0566
Net Migration	0.6723	0.3404	0.3319
Total Change	0.8053	0.4168	0.3885

Age Detail

Age	Total	Male	Female	Age	Total	Male	Female	Age	Total	Male	Female
0-24	2,510,155	1,284,215	1,225,940	12	99,178	50,771	48,407	60-65	563,843	281,471	282,372
0	96,232	49,260	46,972	13	99,154	50,754	48,400	60	97,884	49,141	48,743
1	95,751	49,009	46,742	14	99,010	50,672	48,338	61	95,650	47,894	47,756
2	96,100	49,184	46,916	15	98,591	50,443	48,148	62	94,060	46,988	47,072
3	96,498	49,386	47,112	16	96,837	49,539	47,298	63	93,012	46,363	46,649
4	96,884	49,583	47,301	17	94,798	48,482	46,316	64	92,086	45,814	46,272
5	97,217	49,752	47,465	18	101,796	52,115	49,681	65	91,151	45,271	45,880
6	97,511	49,901	47,610	19	104,441	53,485	50,956				
7	97,829	50,063	47,766	20	106,145	54,359	51,786				
8	98,177	50,238	47,939	21	107,857	55,187	52,670				
9	98,544	50,424	48,120	22	109,509	55,961	53,548				
10	98,903	50,607	48,296	23	111,178	56,739	54,439				
11	99,073	50,711	48,362	24	112,942	57,590	55,352				

Median Age

Total	Male	Female
42.3	41.7	43.0

Notes:

- 1) Unrounded data should not be considered accurate to the last digit.
- 2) Age detail data are provided to develop a variety of age groupings. Single year age values should not be considered reliable.
- 3) Totals may not add due to rounding.

**Population by Age and Sex
Population Forecast for April 1, 2039
State of Washington**

5-Year Age Groups

Age	Total	Male	Female
Total	9,176,702	4,606,352	4,570,350
0-4	485,665	248,578	237,087
5-9	492,473	252,019	240,454
10-14	498,559	255,192	243,367
15-19	495,163	253,348	241,815
20-24	547,054	279,587	267,467
25-29	589,924	300,580	289,344
30-34	604,274	307,137	297,137
35-39	582,494	295,482	287,012
40-44	609,743	312,643	297,100
45-49	640,041	328,269	311,772
50-54	600,319	307,781	292,538
55-59	555,203	281,500	273,703
60-64	480,008	240,068	239,940
65-69	448,281	222,117	226,164
70-74	429,318	210,020	219,298
75-79	410,306	195,323	214,983
80-84	338,338	156,167	182,171
85+	369,539	160,541	208,998

Percentage of Total Population

Age	Total	Male	Female
Total	100.0000	50.1962	49.8038
0-4	5.2924	2.7088	2.5836
5-9	5.3666	2.7463	2.6203
10-14	5.4329	2.7809	2.6520
15-19	5.3959	2.7608	2.6351
20-24	5.9613	3.0467	2.9146
25-29	6.4285	3.2755	3.1530
30-34	6.5849	3.3469	3.2379
35-39	6.3475	3.2199	3.1276
40-44	6.6445	3.4069	3.2375
45-49	6.9746	3.5772	3.3974
50-54	6.5418	3.3539	3.1878
55-59	6.0501	3.0676	2.9826
60-64	5.2307	2.6161	2.6147
65-69	4.8850	2.4204	2.4645
70-74	4.6783	2.2886	2.3897
75-79	4.4712	2.1285	2.3427
80-84	3.6869	1.7018	1.9851
85+	4.0269	1.7494	2.2775

Components of Change

	Total	Male	Female
Births	97,569	49,955	47,614
Deaths	86,296	43,319	42,977
Natural Increase	11,273	6,636	4,637
Net Migration	60,970	30,871	30,099
Total Change	72,243	37,507	34,736

Components as % of Previous Year's Total Population

	Total	Male	Female
Births	1.0717	0.5487	0.5230
Deaths	0.9478	0.4758	0.4720
Natural Increase	0.1238	0.0729	0.0509
Net Migration	0.6697	0.3391	0.3306
Total Change	0.7935	0.4120	0.3815

Age Detail

Age	Total	Male	Female	Age	Total	Male	Female	Age	Total	Male	Female
0-24	2,518,914	1,288,724	1,230,190	12	99,786	51,085	48,701	60-65	571,730	285,627	286,103
0	97,128	49,719	47,409	13	99,854	51,117	48,737	60	100,553	50,553	50,000
1	96,636	49,463	47,173	14	99,819	51,094	48,725	61	97,633	48,945	48,688
2	96,939	49,616	47,323	15	99,661	51,003	48,658	62	95,377	47,684	47,693
3	97,301	49,799	47,502	16	99,286	50,796	48,490	63	93,763	46,764	46,999
4	97,661	49,981	47,680	17	97,551	49,886	47,665	64	92,682	46,122	46,560
5	97,950	50,128	47,822	18	95,609	48,891	46,718	65	91,722	45,559	46,163
6	98,202	50,256	47,946	19	103,056	52,772	50,284				
7	98,462	50,387	48,075	20	105,798	54,196	51,602				
8	98,765	50,541	48,224	21	107,736	55,141	52,595				
9	99,094	50,707	48,387	22	109,472	55,954	53,518				
10	99,452	50,888	48,564	23	111,162	56,743	54,419				
11	99,648	51,008	48,640	24	112,886	57,553	55,333				

Median Age

Total	Male	Female
42.5	41.8	43.1

Notes:

- 1) Unrounded data should not be considered accurate to the last digit.
- 2) Age detail data are provided to develop a variety of age groupings. Single year age values should not be considered reliable.
- 3) Totals may not add due to rounding.

**Population by Age and Sex
Population Forecast for April 1, 2040
State of Washington**

5-Year Age Groups

Age	Total	Male	Female
Total	9,248,473	4,643,713	4,604,760
0-4	489,989	250,797	239,192
5-9	495,922	253,789	242,133
10-14	501,556	256,739	244,817
15-19	496,034	253,754	242,280
20-24	545,111	278,645	266,466
25-29	590,174	300,538	289,636
30-34	613,078	311,993	301,085
35-39	587,606	297,671	289,935
40-44	601,470	307,992	293,478
45-49	643,198	329,716	313,482
50-54	607,765	311,754	296,011
55-59	568,393	288,674	279,719
60-64	490,085	245,389	244,696
65-69	450,871	223,390	227,481
70-74	426,097	208,986	217,111
75-79	408,692	195,039	213,653
80-84	343,834	159,319	184,515
85+	388,598	169,528	219,070

Percentage of Total Population

Age	Total	Male	Female
Total	100.0000	50.2106	49.7894
0-4	5.2981	2.7118	2.5863
5-9	5.3622	2.7441	2.6181
10-14	5.4231	2.7760	2.6471
15-19	5.3634	2.7437	2.6197
20-24	5.8941	3.0129	2.8812
25-29	6.3813	3.2496	3.1317
30-34	6.6290	3.3735	3.2555
35-39	6.3535	3.2186	3.1349
40-44	6.5035	3.3302	3.1733
45-49	6.9546	3.5651	3.3896
50-54	6.5715	3.3709	3.2006
55-59	6.1458	3.1213	3.0245
60-64	5.2991	2.6533	2.6458
65-69	4.8751	2.4154	2.4597
70-74	4.6072	2.2597	2.3475
75-79	4.4190	2.1089	2.3101
80-84	3.7177	1.7227	1.9951
85+	4.2018	1.8330	2.3687

Components of Change

	Total	Male	Female
Births	98,438	50,400	48,038
Deaths	87,838	44,013	43,825
Natural Increase	10,600	6,387	4,213
Net Migration	61,171	30,974	30,197
Total Change	71,771	37,361	34,410

Components as % of Previous Year's Total Population

	Total	Male	Female
Births	1.0727	0.5492	0.5235
Deaths	0.9572	0.4796	0.4776
Natural Increase	0.1155	0.0696	0.0459
Net Migration	0.6666	0.3375	0.3291
Total Change	0.7821	0.4071	0.3750

Age Detail

Age	Total	Male	Female	Age	Total	Male	Female	Age	Total	Male	Female
0-24	2,528,612	1,293,724	1,234,888	12	100,364	51,384	48,980	60-65	582,408	291,260	291,148
0	97,998	50,165	47,833	13	100,465	51,433	49,032	60	103,903	52,312	51,591
1	97,538	49,925	47,613	14	100,522	51,459	49,063	61	100,302	50,356	49,946
2	97,834	50,075	47,759	15	100,475	51,428	49,047	62	97,360	48,734	48,626
3	98,148	50,235	47,913	16	100,364	51,360	49,004	63	95,082	47,461	47,621
4	98,471	50,397	48,074	17	100,017	51,152	48,865	64	93,438	46,526	46,912
5	98,734	50,529	48,205	18	98,386	50,307	48,079	65	92,323	45,871	46,452
6	98,940	50,634	48,306	19	96,792	49,507	47,285				
7	99,158	50,745	48,413	20	104,395	53,474	50,921				
8	99,403	50,868	48,535	21	107,382	54,975	52,407				
9	99,687	51,013	48,674	22	109,345	55,906	53,439				
10	100,006	51,173	48,833	23	111,122	56,734	54,388				
11	100,199	51,290	48,909	24	112,867	57,556	55,311				

Median Age

Total	Male	Female
42.6	42.0	43.2

Notes:

- 1) Unrounded data should not be considered accurate to the last digit.
- 2) Age detail data are provided to develop a variety of age groupings. Single year age values should not be considered reliable.
- 3) Totals may not add due to rounding.

**Population by Age and Sex
Population Forecast for April 1, 2041
State of Washington**

5-Year Age Groups

Age	Total	Male	Female
Total	9,319,691	4,680,884	4,638,807
0-4	494,297	253,009	241,288
5-9	499,612	255,683	243,929
10-14	504,455	258,233	246,222
15-19	503,934	257,823	246,111
20-24	536,797	274,371	262,426
25-29	590,232	300,449	289,783
30-34	619,255	315,341	303,914
35-39	595,585	301,668	293,917
40-44	595,711	304,356	291,355
45-49	641,301	328,729	312,572
50-54	617,056	316,478	300,578
55-59	578,460	294,293	284,167
60-64	503,233	252,322	250,911
65-69	453,845	224,901	228,944
70-74	424,617	208,614	216,003
75-79	405,637	194,193	211,444
80-84	348,092	161,786	186,306
85+	407,572	178,635	228,937

Percentage of Total Population

Age	Total	Male	Female
Total	100.0000	50.2257	49.7743
0-4	5.3038	2.7148	2.5890
5-9	5.3608	2.7435	2.6174
10-14	5.4128	2.7708	2.6420
15-19	5.4072	2.7664	2.6408
20-24	5.7598	2.9440	2.8158
25-29	6.3332	3.2238	3.1094
30-34	6.6446	3.3836	3.2610
35-39	6.3906	3.2369	3.1537
40-44	6.3920	3.2657	3.1262
45-49	6.8811	3.5273	3.3539
50-54	6.6210	3.3958	3.2252
55-59	6.2069	3.1578	3.0491
60-64	5.3997	2.7074	2.6923
65-69	4.8697	2.4132	2.4566
70-74	4.5561	2.2384	2.3177
75-79	4.3525	2.0837	2.2688
80-84	3.7350	1.7360	1.9991
85+	4.3732	1.9167	2.4565

Components of Change

	Total	Male	Female
Births	99,198	50,789	48,409
Deaths	89,280	44,663	44,617
Natural Increase	9,918	6,126	3,792
Net Migration	61,300	31,045	30,255
Total Change	71,218	37,171	34,047

Components as % of Previous Year's Total Population

	Total	Male	Female
Births	1.0726	0.5492	0.5234
Deaths	0.9653	0.4829	0.4824
Natural Increase	0.1072	0.0662	0.0410
Net Migration	0.6628	0.3357	0.3271
Total Change	0.7701	0.4019	0.3681

Age Detail

Age	Total	Male	Female	Age	Total	Male	Female	Age	Total	Male	Female
0-24	2,539,095	1,299,119	1,239,976	12	100,917	51,667	49,250	60-65	596,315	298,599	297,716
0	98,759	50,555	48,204	13	101,045	51,733	49,312	60	107,735	54,332	53,403
1	98,415	50,375	48,040	14	101,136	51,776	49,360	61	103,648	52,112	51,536
2	98,745	50,542	48,203	15	101,180	51,794	49,386	62	100,027	50,144	49,883
3	99,052	50,699	48,353	16	101,181	51,787	49,394	63	97,065	48,511	48,554
4	99,326	50,838	48,488	17	101,101	51,719	49,382	64	94,758	47,223	47,535
5	99,550	50,949	48,601	18	100,871	51,583	49,288	65	93,082	46,277	46,805
6	99,730	51,039	48,691	19	99,601	50,940	48,661				
7	99,902	51,126	48,776	20	98,045	50,163	47,882				
8	100,103	51,228	48,875	21	105,955	54,241	51,714				
9	100,327	51,341	48,986	22	108,984	55,736	53,248				
10	100,602	51,481	49,121	23	110,989	56,684	54,305				
11	100,755	51,576	49,179	24	112,824	57,547	55,277				

Median Age

Total	Male	Female
42.7	42.1	43.3

Notes:

- 1) Unrounded data should not be considered accurate to the last digit.
- 2) Age detail data are provided to develop a variety of age groupings. Single year age values should not be considered reliable.
- 3) Totals may not add due to rounding.

**Population by Age and Sex
Population Forecast for April 1, 2042
State of Washington**

5-Year Age Groups

Age	Total	Male	Female
Total	9,390,222	4,717,780	4,672,442
0-4	498,439	255,132	243,307
5-9	503,536	257,699	245,837
10-14	507,385	259,740	247,645
15-19	509,675	260,794	248,881
20-24	531,213	271,481	259,732
25-29	590,076	300,325	289,751
30-34	623,118	317,333	305,785
35-39	605,534	306,914	298,620
40-44	592,789	302,048	290,741
45-49	635,302	325,681	309,621
50-54	627,154	321,508	305,646
55-59	586,108	298,672	287,436
60-64	518,443	260,354	258,089
65-69	457,658	226,889	230,769
70-74	424,691	208,841	215,850
75-79	401,716	193,016	208,700
80-84	351,071	163,590	187,481
85+	426,314	187,763	238,551

Percentage of Total Population

Age	Total	Male	Female
Total	100.0000	50.2414	49.7586
0-4	5.3081	2.7170	2.5911
5-9	5.3623	2.7443	2.6180
10-14	5.4033	2.7661	2.6373
15-19	5.4277	2.7773	2.6504
20-24	5.6571	2.8911	2.7660
25-29	6.2839	3.1983	3.0857
30-34	6.6358	3.3794	3.2564
35-39	6.4486	3.2684	3.1801
40-44	6.3128	3.2166	3.0962
45-49	6.7656	3.4683	3.2973
50-54	6.6788	3.4239	3.2549
55-59	6.2417	3.1807	3.0610
60-64	5.5211	2.7726	2.7485
65-69	4.8738	2.4162	2.4575
70-74	4.5227	2.2240	2.2987
75-79	4.2780	2.0555	2.2225
80-84	3.7387	1.7421	1.9966
85+	4.5400	1.9996	2.5404

Components of Change

	Total	Male	Female
Births	99,867	51,131	48,736
Deaths	90,636	45,283	45,353
Natural Increase	9,231	5,848	3,383
Net Migration	61,300	31,048	30,252
Total Change	70,531	36,896	33,635

Components as % of Previous Year's Total Population

	Total	Male	Female
Births	1.0716	0.5486	0.5229
Deaths	0.9725	0.4859	0.4866
Natural Increase	0.0990	0.0627	0.0363
Net Migration	0.6577	0.3331	0.3246
Total Change	0.7568	0.3959	0.3609

Age Detail

Age	Total	Male	Female	Age	Total	Male	Female	Age	Total	Male	Female
0-24	2,550,248	1,304,846	1,245,402	12	101,474	51,953	49,521	60-65	612,845	307,328	305,517
0	99,429	50,898	48,531	13	101,598	52,016	49,582	60	111,132	56,140	54,992
1	99,179	50,767	48,412	14	101,716	52,076	49,640	61	107,475	54,128	53,347
2	99,627	50,994	48,633	15	101,796	52,112	49,684	62	103,369	51,896	51,473
3	99,969	51,169	48,800	16	101,888	52,154	49,734	63	99,728	49,918	49,810
4	100,235	51,304	48,931	17	101,920	52,147	49,773	64	96,739	48,272	48,467
5	100,411	51,393	49,018	18	101,961	52,153	49,808	65	94,402	46,974	47,428
6	100,550	51,461	49,089	19	102,110	52,228	49,882				
7	100,694	51,532	49,162	20	100,885	51,612	49,273				
8	100,850	51,610	49,240	21	99,502	50,879	48,623				
9	101,031	51,703	49,328	22	107,529	54,989	52,540				
10	101,244	51,810	49,434	23	110,616	56,509	54,107				
11	101,353	51,885	49,468	24	112,681	57,492	55,189				

Median Age

Total	Male	Female
42.8	42.2	43.4

Notes:

- 1) Unrounded data should not be considered accurate to the last digit.
- 2) Age detail data are provided to develop a variety of age groupings. Single year age values should not be considered reliable.
- 3) Totals may not add due to rounding.

**Population by Age and Sex
Population Forecast for April 1, 2043
State of Washington**

5-Year Age Groups

Age	Total	Male	Female
Total	9,460,164	4,754,437	4,705,727
0-4	502,365	257,145	245,220
5-9	507,680	259,826	247,854
10-14	510,443	261,312	249,131
15-19	513,501	262,785	250,716
20-24	528,196	269,895	258,301
25-29	589,694	300,148	289,546
30-34	625,180	318,288	306,892
35-39	616,394	312,790	303,604
40-44	592,597	301,139	291,458
45-49	626,761	321,269	305,492
50-54	636,502	326,092	310,410
55-59	592,604	302,406	290,198
60-64	534,336	268,786	265,550
65-69	462,923	229,666	233,257
70-74	425,984	209,562	216,422
75-79	397,579	191,747	205,832
80-84	352,770	164,778	187,992
85+	444,655	196,803	247,852

Percentage of Total Population

Age	Total	Male	Female
Total	100.0000	50.2574	49.7426
0-4	5.3103	2.7182	2.5921
5-9	5.3665	2.7465	2.6200
10-14	5.3957	2.7622	2.6335
15-19	5.4280	2.7778	2.6502
20-24	5.5834	2.8530	2.7304
25-29	6.2334	3.1728	3.0607
30-34	6.6086	3.3645	3.2440
35-39	6.5157	3.3064	3.2093
40-44	6.2641	3.1832	3.0809
45-49	6.6253	3.3960	3.2292
50-54	6.7282	3.4470	3.2812
55-59	6.2642	3.1966	3.0676
60-64	5.6483	2.8412	2.8070
65-69	4.8934	2.4277	2.4657
70-74	4.5029	2.2152	2.2877
75-79	4.2027	2.0269	2.1758
80-84	3.7290	1.7418	1.9872
85+	4.7003	2.0803	2.6200

Components of Change

	Total	Male	Female
Births	100,540	51,476	49,064
Deaths	91,898	45,869	46,029
Natural Increase	8,642	5,607	3,035
Net Migration	61,300	31,050	30,250
Total Change	69,942	36,657	33,285

Components as % of Previous Year's Total Population

	Total	Male	Female
Births	1.0707	0.5482	0.5225
Deaths	0.9787	0.4885	0.4902
Natural Increase	0.0920	0.0597	0.0323
Net Migration	0.6528	0.3307	0.3221
Total Change	0.7448	0.3904	0.3545

Age Detail

Age	Total	Male	Female	Age	Total	Male	Female	Age	Total	Male	Female
0-24	2,562,185	1,310,963	1,251,222	12	102,072	52,262	49,810	60-65	630,718	316,808	313,910
0	100,103	51,244	48,859	13	102,156	52,302	49,854	60	113,815	57,604	56,211
1	99,852	51,112	48,740	14	102,269	52,360	49,909	61	110,867	55,932	54,935
2	100,395	51,388	49,007	15	102,376	52,412	49,964	62	107,189	53,907	53,282
3	100,856	51,623	49,233	16	102,505	52,472	50,033	63	103,065	51,666	51,399
4	101,159	51,778	49,381	17	102,629	52,515	50,114	64	99,400	49,677	49,723
5	101,323	51,860	49,463	18	102,783	52,583	50,200	65	96,382	48,022	48,360
6	101,414	51,906	49,508	19	103,208	52,803	50,405				
7	101,518	51,956	49,562	20	103,420	52,914	50,506				
8	101,645	52,018	49,627	21	102,379	52,346	50,033				
9	101,780	52,086	49,694	22	100,972	51,577	49,395				
10	101,950	52,173	49,777	23	109,131	55,748	53,383				
11	101,996	52,215	49,781	24	112,294	57,310	54,984				

Median Age

Total	Male	Female
42.8	42.3	43.5

Notes:

- 1) Unrounded data should not be considered accurate to the last digit.
- 2) Age detail data are provided to develop a variety of age groupings. Single year age values should not be considered reliable.
- 3) Totals may not add due to rounding.

**Population by Age and Sex
Population Forecast for April 1, 2044
State of Washington**

5-Year Age Groups

Age	Total	Male	Female
Total	9,529,611	4,790,909	4,738,702
0-4	506,034	259,027	247,007
5-9	512,018	262,054	249,964
10-14	513,704	262,986	250,718
15-19	516,791	264,490	252,301
20-24	526,604	269,038	257,566
25-29	588,926	299,813	289,113
30-34	625,973	318,539	307,434
35-39	627,068	318,651	308,417
40-44	595,014	301,691	293,323
45-49	617,378	316,299	301,079
50-54	643,585	329,471	314,114
55-59	599,036	306,021	293,015
60-64	549,553	276,921	272,632
65-69	470,261	233,548	236,713
70-74	428,150	210,664	217,486
75-79	393,904	190,648	203,256
80-84	353,173	165,389	187,784
85+	462,439	205,659	256,780

Percentage of Total Population

Age	Total	Male	Female
Total	100.0000	50.2739	49.7261
0-4	5.3101	2.7181	2.5920
5-9	5.3729	2.7499	2.6230
10-14	5.3906	2.7597	2.6309
15-19	5.4230	2.7755	2.6475
20-24	5.5260	2.8232	2.7028
25-29	6.1800	3.1461	3.0338
30-34	6.5687	3.3426	3.2261
35-39	6.5802	3.3438	3.2364
40-44	6.2438	3.1658	3.0780
45-49	6.4785	3.3191	3.1594
50-54	6.7535	3.4573	3.2962
55-59	6.2860	3.2113	3.0748
60-64	5.7668	2.9059	2.8609
65-69	4.9347	2.4508	2.4840
70-74	4.4928	2.2106	2.2822
75-79	4.1335	2.0006	2.1329
80-84	3.7061	1.7355	1.9705
85+	4.8527	2.1581	2.6945

Components of Change

	Total	Male	Female
Births	101,193	51,810	49,383
Deaths	93,046	46,395	46,651
Natural Increase	8,147	5,415	2,732
Net Migration	61,300	31,057	30,243
Total Change	69,447	36,472	32,975

Components as % of Previous Year's Total Population

	Total	Male	Female
Births	1.0697	0.5477	0.5220
Deaths	0.9836	0.4904	0.4931
Natural Increase	0.0861	0.0572	0.0289
Net Migration	0.6480	0.3283	0.3197
Total Change	0.7341	0.3855	0.3486

Age Detail

Age	Total	Male	Female	Age	Total	Male	Female	Age	Total	Male	Female
0-24	2,575,151	1,317,595	1,257,556	12	102,716	52,593	50,123	60-65	648,592	326,345	322,247
0	100,757	51,579	49,178	13	102,755	52,612	50,143	60	115,819	58,726	57,093
1	100,528	51,459	49,069	14	102,829	52,646	50,183	61	113,549	57,395	56,154
2	101,071	51,735	49,336	15	102,929	52,696	50,233	62	110,577	55,708	54,869
3	101,627	52,019	49,608	16	103,085	52,772	50,313	63	106,879	53,672	53,207
4	102,051	52,235	49,816	17	103,248	52,834	50,414	64	102,729	51,420	51,309
5	102,252	52,337	49,915	18	103,494	52,952	50,542	65	99,039	49,424	49,615
6	102,331	52,376	49,955	19	104,035	53,236	50,799				
7	102,386	52,403	49,983	20	104,526	53,494	51,032				
8	102,472	52,443	50,029	21	104,943	53,662	51,281				
9	102,577	52,495	50,082	22	103,885	53,061	50,824				
10	102,701	52,557	50,144	23	102,471	52,286	50,185				
11	102,703	52,578	50,125	24	110,779	56,535	54,244				

Median Age

Total	Male	Female
42.9	42.3	43.5

Notes:

- 1) Unrounded data should not be considered accurate to the last digit.
- 2) Age detail data are provided to develop a variety of age groupings. Single year age values should not be considered reliable.
- 3) Totals may not add due to rounding.

**Population by Age and Sex
Population Forecast for April 1, 2045
State of Washington**

5-Year Age Groups

Age	Total	Male	Female
Total	9,598,597	4,827,192	4,771,405
0-4	509,423	260,766	248,657
5-9	516,472	264,341	252,131
10-14	517,211	264,787	252,424
15-19	519,818	266,051	253,767
20-24	527,327	269,377	257,950
25-29	586,660	298,723	287,937
30-34	626,096	318,428	307,668
35-39	636,093	323,637	312,456
40-44	600,214	303,921	296,293
45-49	609,002	311,600	297,402
50-54	646,777	330,946	315,831
55-59	606,544	310,034	296,510
60-64	562,705	284,057	278,648
65-69	480,295	238,842	241,453
70-74	430,858	212,028	218,830
75-79	391,321	189,951	201,370
80-84	352,258	165,461	186,797
85+	479,523	214,242	265,281

Percentage of Total Population

Age	Total	Male	Female
Total	100.0000	50.2906	49.7094
0-4	5.3073	2.7167	2.5906
5-9	5.3807	2.7540	2.6267
10-14	5.3884	2.7586	2.6298
15-19	5.4156	2.7718	2.6438
20-24	5.4938	2.8064	2.6874
25-29	6.1119	3.1122	2.9998
30-34	6.5228	3.3174	3.2053
35-39	6.6269	3.3717	3.2552
40-44	6.2531	3.1663	3.0868
45-49	6.3447	3.2463	3.0984
50-54	6.7382	3.4479	3.2904
55-59	6.3191	3.2300	3.0891
60-64	5.8624	2.9594	2.9030
65-69	5.0038	2.4883	2.5155
70-74	4.4888	2.2089	2.2798
75-79	4.0769	1.9789	2.0979
80-84	3.6699	1.7238	1.9461
85+	4.9958	2.2320	2.7637

Components of Change

	Total	Male	Female
Births	101,796	52,119	49,677
Deaths	94,110	46,893	47,217
Natural Increase	7,686	5,226	2,460
Net Migration	61,300	31,057	30,243
Total Change	68,986	36,283	32,703

Components as % of Previous Year's Total Population

	Total	Male	Female
Births	1.0682	0.5469	0.5213
Deaths	0.9876	0.4921	0.4955
Natural Increase	0.0807	0.0548	0.0258
Net Migration	0.6433	0.3259	0.3174
Total Change	0.7239	0.3807	0.3432

Age Detail

Age	Total	Male	Female	Age	Total	Male	Female	Age	Total	Male	Female
0-24	2,590,251	1,325,322	1,264,929	12	103,425	52,957	50,468	60-65	665,067	335,220	329,847
0	101,361	51,889	49,472	13	103,400	52,943	50,457	60	117,097	59,482	57,615
1	101,183	51,795	49,388	14	103,428	52,956	50,472	61	115,553	58,517	57,036
2	101,749	52,083	49,666	15	103,490	52,983	50,507	62	113,257	57,169	56,088
3	102,305	52,367	49,938	16	103,639	53,057	50,582	63	110,262	55,469	54,793
4	102,825	52,632	50,193	17	103,828	53,134	50,694	64	106,536	53,420	53,116
5	103,149	52,797	50,352	18	104,113	53,271	50,842	65	102,362	51,163	51,199
6	103,264	52,855	50,409	19	104,748	53,606	51,142				
7	103,307	52,875	50,432	20	105,357	53,929	51,428				
8	103,344	52,892	50,452	21	106,059	54,247	51,812				
9	103,408	52,922	50,486	22	106,480	54,392	52,088				
10	103,501	52,967	50,534	23	105,419	53,787	51,632				
11	103,457	52,964	50,493	24	104,012	53,022	50,990				

Median Age

Total	Male	Female
43.0	42.4	43.6

Notes:

- 1) Unrounded data should not be considered accurate to the last digit.
- 2) Age detail data are provided to develop a variety of age groupings. Single year age values should not be considered reliable.
- 3) Totals may not add due to rounding.

**Population by Age and Sex
Population Forecast for April 1, 2046
State of Washington**

5-Year Age Groups

Age	Total	Male	Female
Total	9,667,116	4,863,281	4,803,835
0-4	512,535	262,365	250,170
5-9	520,886	266,606	254,280
10-14	520,959	266,711	254,248
15-19	522,736	267,554	255,182
20-24	535,617	273,642	261,975
25-29	577,513	294,049	283,464
30-34	625,992	318,256	307,736
35-39	642,381	327,050	315,331
40-44	608,329	307,988	300,341
45-49	603,169	307,928	295,241
50-54	644,877	329,973	314,904
55-59	615,891	314,792	301,099
60-64	572,762	289,666	283,096
65-69	493,342	245,707	247,635
70-74	433,928	213,616	220,312
75-79	390,328	189,848	200,480
80-84	350,082	165,048	185,034
85+	495,789	222,482	273,307

Percentage of Total Population

Age	Total	Male	Female
Total	100.0000	50.3075	49.6925
0-4	5.3018	2.7140	2.5878
5-9	5.3882	2.7579	2.6304
10-14	5.3890	2.7590	2.6300
15-19	5.4074	2.7677	2.6397
20-24	5.5406	2.8306	2.7100
25-29	5.9740	3.0417	2.9322
30-34	6.4755	3.2922	3.1833
35-39	6.6450	3.3831	3.2619
40-44	6.2928	3.1859	3.1068
45-49	6.2394	3.1853	3.0541
50-54	6.6708	3.4134	3.2575
55-59	6.3710	3.2563	3.1147
60-64	5.9248	2.9964	2.9284
65-69	5.1033	2.5417	2.5616
70-74	4.4887	2.2097	2.2790
75-79	4.0377	1.9639	2.0738
80-84	3.6214	1.7073	1.9141
85+	5.1286	2.3014	2.8272

Components of Change

	Total	Male	Female
Births	102,276	52,365	49,911
Deaths	95,057	47,335	47,722
Natural Increase	7,219	5,030	2,189
Net Migration	61,300	31,059	30,241
Total Change	68,519	36,089	32,430

Components as % of Previous Year's Total Population

	Total	Male	Female
Births	1.0655	0.5455	0.5200
Deaths	0.9903	0.4931	0.4972
Natural Increase	0.0752	0.0524	0.0228
Net Migration	0.6386	0.3236	0.3151
Total Change	0.7138	0.3760	0.3379

Age Detail

Age	Total	Male	Female	Age	Total	Male	Female	Age	Total	Male	Female
0-24	2,612,733	1,336,878	1,275,855	12	104,181	53,344	50,837	60-65	678,922	342,823	336,099
0	101,844	52,137	49,707	13	104,110	53,308	50,802	60	117,816	59,960	57,856
1	101,791	52,108	49,683	14	104,074	53,288	50,786	61	116,833	59,274	57,559
2	102,407	52,421	49,986	15	104,090	53,293	50,797	62	115,260	58,290	56,970
3	102,987	52,717	50,270	16	104,200	53,344	50,856	63	112,939	56,928	56,011
4	103,506	52,982	50,524	17	104,382	53,419	50,963	64	109,914	55,214	54,700
5	103,925	53,194	50,731	18	104,695	53,572	51,123	65	106,160	53,157	53,003
6	104,165	53,317	50,848	19	105,369	53,926	51,443				
7	104,244	53,356	50,888	20	106,074	54,301	51,773				
8	104,269	53,366	50,903	21	106,896	54,686	52,210				
9	104,283	53,373	50,910	22	107,605	54,982	52,623				
10	104,335	53,396	50,939	23	108,045	55,133	52,912				
11	104,259	53,375	50,884	24	106,997	54,540	52,457				

Median Age

Total	Male	Female
43.0	42.5	43.6

Notes:

- 1) Unrounded data should not be considered accurate to the last digit.
- 2) Age detail data are provided to develop a variety of age groupings. Single year age values should not be considered reliable.
- 3) Totals may not add due to rounding.

**Population by Age and Sex
Population Forecast for April 1, 2047
State of Washington**

5-Year Age Groups

Age	Total	Male	Female
Total	9,735,181	4,899,183	4,835,998
0-4	515,368	263,820	251,548
5-9	525,124	268,780	256,344
10-14	524,950	268,762	256,188
15-19	525,682	269,071	256,611
20-24	541,592	276,733	264,859
25-29	571,310	290,860	280,450
30-34	625,659	318,045	307,614
35-39	646,273	329,062	317,211
40-44	618,456	313,334	305,122
45-49	600,208	305,597	294,611
50-54	638,855	326,931	311,924
55-59	626,040	319,853	306,187
60-64	580,431	294,058	286,373
65-69	508,404	253,641	254,763
70-74	437,806	215,662	222,144
75-79	390,759	190,285	200,474
80-84	347,157	164,353	182,804
85+	511,107	230,336	280,771

Percentage of Total Population

Age	Total	Male	Female
Total	100.0000	50.3245	49.6755
0-4	5.2939	2.7100	2.5839
5-9	5.3941	2.7609	2.6332
10-14	5.3923	2.7607	2.6316
15-19	5.3998	2.7639	2.6359
20-24	5.5632	2.8426	2.7206
25-29	5.8685	2.9877	2.8808
30-34	6.4268	3.2670	3.1598
35-39	6.6385	3.3801	3.2584
40-44	6.3528	3.2186	3.1342
45-49	6.1654	3.1391	3.0263
50-54	6.5623	3.3582	3.2041
55-59	6.4307	3.2855	3.1452
60-64	5.9622	3.0206	2.9416
65-69	5.2223	2.6054	2.6169
70-74	4.4972	2.2153	2.2819
75-79	4.0139	1.9546	2.0593
80-84	3.5660	1.6882	1.8778
85+	5.2501	2.3660	2.8841

Components of Change

	Total	Male	Female
Births	102,667	52,565	50,102
Deaths	95,902	47,732	48,170
Natural Increase	6,765	4,833	1,932
Net Migration	61,300	31,069	30,231
Total Change	68,065	35,902	32,163

Components as % of Previous Year's Total Population

	Total	Male	Female
Births	1.0620	0.5438	0.5183
Deaths	0.9920	0.4938	0.4983
Natural Increase	0.0700	0.0500	0.0200
Net Migration	0.6341	0.3214	0.3127
Total Change	0.7041	0.3714	0.3327

Age Detail

Age	Total	Male	Female	Age	Total	Male	Female	Age	Total	Male	Female
0-24	2,632,716	1,347,166	1,285,550	12	104,986	53,757	51,229	60-65	689,962	349,004	340,958
0	102,238	52,339	49,899	13	104,868	53,696	51,172	60	118,805	60,538	58,267
1	102,276	52,357	49,919	14	104,787	53,655	51,132	61	117,553	59,753	57,800
2	103,017	52,735	50,282	15	104,736	53,625	51,111	62	116,542	59,048	57,494
3	103,647	53,056	50,591	16	104,801	53,654	51,147	63	114,943	58,049	56,894
4	104,190	53,333	50,857	17	104,944	53,707	51,237	64	112,588	56,670	55,918
5	104,608	53,545	51,063	18	105,249	53,857	51,392	65	109,531	54,946	54,585
6	104,945	53,716	51,229	19	105,952	54,228	51,724				
7	105,149	53,820	51,329	20	106,696	54,622	52,074				
8	105,210	53,850	51,360	21	107,615	55,059	52,556				
9	105,212	53,849	51,363	22	108,447	55,423	53,024				
10	105,214	53,849	51,365	23	109,180	55,728	53,452				
11	105,095	53,805	51,290	24	109,654	55,901	53,753				

Median Age

Total	Male	Female
43.1	42.6	43.7

Notes:

- 1) Unrounded data should not be considered accurate to the last digit.
- 2) Age detail data are provided to develop a variety of age groupings. Single year age values should not be considered reliable.
- 3) Totals may not add due to rounding.

**Population by Age and Sex
Population Forecast for April 1, 2048
State of Washington**

5-Year Age Groups

Age	Total	Male	Female
Total	9,802,891	4,934,931	4,867,960
0-4	517,916	265,129	252,787
5-9	529,130	270,836	258,294
10-14	529,168	270,928	258,240
15-19	528,763	270,655	258,108
20-24	545,514	278,776	266,738
25-29	567,879	289,074	278,805
30-34	625,088	317,779	307,309
35-39	648,301	329,998	318,303
40-44	629,498	319,315	310,183
45-49	600,008	304,684	295,324
50-54	630,288	322,524	307,764
55-59	635,431	324,464	310,967
60-64	586,963	297,817	289,146
65-69	524,133	261,965	262,168
70-74	443,090	218,468	224,622
75-79	392,299	191,169	201,130
80-84	344,058	163,583	180,475
85+	525,364	237,767	287,597

Percentage of Total Population

Age	Total	Male	Female
Total	100.0000	50.3416	49.6584
0-4	5.2833	2.7046	2.5787
5-9	5.3977	2.7628	2.6349
10-14	5.3981	2.7638	2.6343
15-19	5.3939	2.7610	2.6330
20-24	5.5648	2.8438	2.7210
25-29	5.7930	2.9489	2.8441
30-34	6.3766	3.2417	3.1349
35-39	6.6134	3.3663	3.2470
40-44	6.4216	3.2574	3.1642
45-49	6.1207	3.1081	3.0126
50-54	6.4296	3.2901	3.1395
55-59	6.4821	3.3099	3.1722
60-64	5.9877	3.0381	2.9496
65-69	5.3467	2.6723	2.6744
70-74	4.5200	2.2286	2.2914
75-79	4.0019	1.9501	2.0517
80-84	3.5098	1.6687	1.8410
85+	5.3593	2.4255	2.9338

Components of Change

	Total	Male	Female
Births	103,062	52,767	50,295
Deaths	96,652	48,091	48,561
Natural Increase	6,410	4,676	1,734
Net Migration	61,300	31,072	30,228
Total Change	67,710	35,748	31,962

Components as % of Previous Year's Total Population

	Total	Male	Female
Births	1.0587	0.5420	0.5166
Deaths	0.9928	0.4940	0.4988
Natural Increase	0.0658	0.0480	0.0178
Net Migration	0.6297	0.3192	0.3105
Total Change	0.6955	0.3672	0.3283

Age Detail

Age	Total	Male	Female	Age	Total	Male	Female	Age	Total	Male	Female
0-24	2,650,491	1,356,324	1,294,167	12	105,824	54,188	51,636	60-65	699,165	354,217	344,948
0	102,634	52,542	50,092	13	105,675	54,110	51,565	60	120,339	61,358	58,981
1	102,670	52,559	50,111	14	105,546	54,043	51,503	61	118,544	60,333	58,211
2	103,502	52,984	50,518	15	105,451	53,993	51,458	62	117,264	59,529	57,735
3	104,258	53,371	50,887	16	105,448	53,987	51,461	63	116,225	58,807	57,418
4	104,852	53,673	51,179	17	105,546	54,017	51,529	64	114,591	57,790	56,801
5	105,295	53,898	51,397	18	105,811	54,145	51,666	65	112,202	56,400	55,802
6	105,629	54,068	51,561	19	106,507	54,513	51,994				
7	105,931	54,220	51,711	20	107,281	54,925	52,356				
8	106,118	54,315	51,803	21	108,239	55,381	52,858				
9	106,157	54,335	51,822	22	109,169	55,798	53,371				
10	106,146	54,327	51,819	23	110,026	56,171	53,855				
11	105,977	54,260	51,717	24	110,799	56,501	54,298				

Median Age

Total	Male	Female
43.2	42.7	43.8

Notes:

- 1) Unrounded data should not be considered accurate to the last digit.
- 2) Age detail data are provided to develop a variety of age groupings. Single year age values should not be considered reliable.
- 3) Totals may not add due to rounding.

**Population by Age and Sex
Population Forecast for April 1, 2049
State of Washington**

5-Year Age Groups

Age	Total	Male	Female
Total	9,870,328	4,970,558	4,899,770
0-4	520,203	266,305	253,898
5-9	532,864	272,751	260,113
10-14	533,585	273,198	260,387
15-19	532,054	272,345	259,709
20-24	548,859	280,511	268,348
25-29	565,991	288,074	277,917
30-34	624,109	317,345	306,764
35-39	649,016	330,206	318,810
40-44	640,342	325,276	315,066
45-49	602,453	305,245	297,208
50-54	620,867	317,555	303,312
55-59	642,554	327,872	314,682
60-64	593,440	301,464	291,976
65-69	539,192	269,999	269,193
70-74	450,362	222,329	228,033
75-79	394,637	192,394	202,243
80-84	341,369	162,959	178,410
85+	538,431	244,730	293,701

Percentage of Total Population

Age	Total	Male	Female
Total	100.0000	50.3586	49.6414
0-4	5.2704	2.6980	2.5723
5-9	5.3986	2.7633	2.6353
10-14	5.4060	2.7679	2.6381
15-19	5.3904	2.7592	2.6312
20-24	5.5607	2.8420	2.7187
25-29	5.7343	2.9186	2.8157
30-34	6.3231	3.2151	3.1079
35-39	6.5754	3.3454	3.2300
40-44	6.4875	3.2955	3.1921
45-49	6.1037	3.0926	3.0111
50-54	6.2902	3.2173	3.0730
55-59	6.5100	3.3218	3.1882
60-64	6.0124	3.0542	2.9581
65-69	5.4628	2.7355	2.7273
70-74	4.5628	2.2525	2.3103
75-79	3.9982	1.9492	2.0490
80-84	3.4585	1.6510	1.8075
85+	5.4550	2.4795	2.9756

Components of Change

	Total	Male	Female
Births	103,460	52,971	50,489
Deaths	97,323	48,418	48,905
Natural Increase	6,137	4,553	1,584
Net Migration	61,300	31,074	30,226
Total Change	67,437	35,627	31,810

Components as % of Previous Year's Total Population

	Total	Male	Female
Births	1.0554	0.5404	0.5150
Deaths	0.9928	0.4939	0.4989
Natural Increase	0.0626	0.0464	0.0162
Net Migration	0.6253	0.3170	0.3083
Total Change	0.6879	0.3634	0.3245

Age Detail

Age	Total	Male	Female	Age	Total	Male	Female	Age	Total	Male	Female
0-24	2,667,565	1,365,110	1,302,455	12	106,708	54,644	52,064	60-65	707,643	358,983	348,660
0	103,035	52,748	50,287	13	106,515	54,542	51,973	60	122,278	62,360	59,918
1	103,068	52,764	50,304	14	106,355	54,458	51,897	61	120,080	61,154	58,926
2	103,894	53,185	50,709	15	106,212	54,382	51,830	62	118,258	60,111	58,147
3	104,743	53,620	51,123	16	106,165	54,356	51,809	63	116,950	59,290	57,660
4	105,463	53,988	51,475	17	106,193	54,350	51,843	64	115,874	58,549	57,325
5	105,958	54,238	51,720	18	106,415	54,456	51,959	65	114,203	57,519	56,684
6	106,318	54,422	51,896	19	107,069	54,801	52,268				
7	106,617	54,573	52,044	20	107,836	55,210	52,626				
8	106,903	54,717	52,186	21	108,826	55,685	53,141				
9	107,068	54,801	52,267	22	109,795	56,121	53,674				
10	107,095	54,815	52,280	23	110,752	56,548	54,204				
11	106,912	54,739	52,173	24	111,650	56,947	54,703				

Median Age

Total	Male	Female
43.3	42.8	43.8

Notes:

- 1) Unrounded data should not be considered accurate to the last digit.
- 2) Age detail data are provided to develop a variety of age groupings. Single year age values should not be considered reliable.
- 3) Totals may not add due to rounding.

**Population by Age and Sex
Population Forecast for April 1, 2050
State of Washington**

5-Year Age Groups

Age	Total	Male	Female
Total	9,937,575	5,006,096	4,931,479
0-4	522,268	267,365	254,903
5-9	536,305	274,519	261,786
10-14	538,118	275,526	262,592
15-19	535,598	274,165	261,433
20-24	551,920	282,091	269,829
25-29	566,603	288,356	278,247
30-34	621,528	316,105	305,423
35-39	649,038	330,043	318,995
40-44	649,496	330,340	319,156
45-49	607,708	307,505	300,203
50-54	612,473	312,864	299,609
55-59	645,788	329,383	316,405
60-64	600,988	305,506	295,482
65-69	552,222	277,061	275,161
70-74	460,232	227,540	232,692
75-79	397,464	193,855	203,609
80-84	339,633	162,679	176,954
85+	550,193	251,193	299,000

Percentage of Total Population

Age	Total	Male	Female
Total	100.0000	50.3754	49.6246
0-4	5.2555	2.6904	2.5650
5-9	5.3967	2.7624	2.6343
10-14	5.4150	2.7726	2.6424
15-19	5.3896	2.7589	2.6308
20-24	5.5539	2.8386	2.7152
25-29	5.7016	2.9017	2.7999
30-34	6.2543	3.1809	3.0734
35-39	6.5312	3.3212	3.2100
40-44	6.5358	3.3242	3.2116
45-49	6.1153	3.0944	3.0209
50-54	6.1632	3.1483	3.0149
55-59	6.4984	3.3145	3.1839
60-64	6.0476	3.0743	2.9734
65-69	5.5569	2.7880	2.7689
70-74	4.6312	2.2897	2.3415
75-79	3.9996	1.9507	2.0489
80-84	3.4177	1.6370	1.7807
85+	5.5365	2.5277	3.0088

Components of Change

	Total	Male	Female
Births	103,848	53,170	50,678
Deaths	97,901	48,711	49,190
Natural Increase	5,947	4,459	1,488
Net Migration	61,300	31,079	30,221
Total Change	67,247	35,538	31,709

Components as % of Previous Year's Total Population

	Total	Male	Female
Births	1.0521	0.5387	0.5134
Deaths	0.9919	0.4935	0.4984
Natural Increase	0.0603	0.0452	0.0151
Net Migration	0.6211	0.3149	0.3062
Total Change	0.6813	0.3600	0.3213

Age Detail

Age	Total	Male	Female	Age	Total	Male	Female	Age	Total	Male	Female
0-24	2,684,209	1,373,666	1,310,543	12	107,647	55,125	52,522	60-65	716,476	363,785	352,691
0	103,426	52,949	50,477	13	107,401	54,999	52,402	60	124,624	63,508	61,116
1	103,469	52,970	50,499	14	107,197	54,891	52,306	61	122,019	62,156	59,863
2	104,292	53,389	50,903	15	107,022	54,798	52,224	62	119,796	60,933	58,863
3	105,133	53,820	51,313	16	106,927	54,745	52,182	63	117,946	59,874	58,072
4	105,948	54,237	51,711	17	106,913	54,720	52,193	64	116,603	59,035	57,568
5	106,570	54,554	52,016	18	107,062	54,789	52,273	65	115,488	58,279	57,209
6	106,982	54,762	52,220	19	107,674	55,113	52,561				
7	107,307	54,928	52,379	20	108,398	55,498	52,900				
8	107,590	55,070	52,520	21	109,381	55,970	53,411				
9	107,856	55,205	52,651	22	110,383	56,426	53,957				
10	108,009	55,282	52,727	23	111,378	56,871	54,507				
11	107,864	55,229	52,635	24	112,380	57,326	55,054				

Median Age

Total	Male	Female
43.4	42.9	43.9

Notes:

- 1) Unrounded data should not be considered accurate to the last digit.
- 2) Age detail data are provided to develop a variety of age groupings. Single year age values should not be considered reliable.
- 3) Totals may not add due to rounding.

Office of Financial Management
PO Box 43113 • Olympia, WA 98504-3113
360-902-0555 • Fax 360-664-2832