

State of Washington

# Forecast of the State Population

November 2020 Forecast

Forecasting & Research Division  
Office of Financial Management  
November 2020



To accommodate persons with disabilities, this document is available in alternative formats by calling the Office of Financial Management at 360-902-0555. TTY/TDD users should contact OFM via the Washington Relay Service at 711 or 1-800-833-6388.

---

VISIT OUR WEB SITE AT [WWW.OFM.WA.GOV](http://WWW.OFM.WA.GOV).

# Table of Contents

<b>1</b>	<b>Part 1: Discussion of forecast model assumptions</b>
1	Fertility
1	Mortality
2	Net migration
2	Figure 1.1: Actual and predicted net migration, 1990–2040
<b>3</b>	<b>Part 2: Discussion of state population change</b>
3	Figure 2.1: Components of population change by decade, 1980–2040
4	Table 2.1: Components of population change, 2000–40
<b>5</b>	<b>Part 3: Discussion of age-specific populations</b>
5	School-age population
5	Figure 3.1: Population characteristics ages 15–17
5	Table 3.1: Population ages 5–17
6	College-age population
6	Figure 3.2: Population characteristics ages 17–22
6	Table 3.2: Population ages 17–22
7	Senior population
7	Figure 3.3: Population characteristics ages 65 and older
7	Table 3.3: Population ages 65 and older
8	Most-elderly population
8	Figure 3.4: Population characteristics ages 85 and older
8	Table 3.4: Population ages 85 and older
<b>9</b>	<b>Part 4: References</b>
<b>10</b>	<b>Part 5: Annual population estimates and forecasts, 2010–40</b>

# Forecast of the State Population by Age and Sex: 2010–40

## Part 1: Discussion of forecast model assumptions

The Office of Financial Management’s state population forecast is produced using a cohort-component model. This is a sophisticated demographic accounting system that starts with the most recent decennial census counts by single year of age and gender, survives the age and gender-specific cohorts forward in time, incorporates fertility, mortality and migration trends, and forecasts the total population combining all these inputs. The November 2020 forecast incorporates revisions to the assumptions we used in the 2019 forecast model.

This document provides annual age and sex-specific population forecasts<sup>1</sup> from 2010–40. The most recent decennial census serves as the population base. The 2011–20 figures in this report are controlled to OFM’s April 1 postcensal population estimates and vital statistics data from the Washington State Department of Health. The forecast years are 2021–40.

**Fertility:** We expect the total fertility rate to stay at or near the current level because rates of fertility in Washington have remained below 2006 levels. Based on the historical relationship between Washington’s TFR and that of the United States as a whole, the forecast transitions to a TFR of 1.82 from the current TFR of 1.69. This is in line with the U.S. Census Bureau’s 2017 forecasted trend in fertility (U.S. Census Bureau, 2017). Historically, the increase in women’s labor force participation and educational attainment has played a major role in the decline of TFRs over time. Economic factors such as the current recession, wage stagnation and student loan debt may also be contributing to delayed childbearing and smaller families. Delays in births can be seen in the age-specific fertility rates, where rates for 15 to 19-year-old women have dropped dramatically over the past decade.

Recent decreases in fertility rates have caused births to decline for the past four years. Between 2019 and 2020, approximately 85,200 births occurred in Washington. This is about 500 less than the previous year. As the population grows and the state continues to attract migrants at the working ages, the number of births is forecast to grow, reaching 91,100 per year by 2030 and 99,300 by 2040. Rates of fertility in Washington are highly influenced by migration, namely the state’s Hispanic population and movers from overseas.

**Mortality:** The state forecast model uses life expectancy at birth to establish rates of mortality for the population. Historically, Washington has higher life expectancy at birth than the United States as a whole, and we expect this trend to continue. Washington’s life expectancy was projected based on the trend of the U.S. Census Bureau’s 2014 life expectancy projection (U.S. Census Bureau, 2014). Male life expectancy is projected to continue increasing faster than female life expectancy, rising from 78 in 2020 to 81.4 in 2040, while females are projected to reach a life expectancy of 85.6 in

---

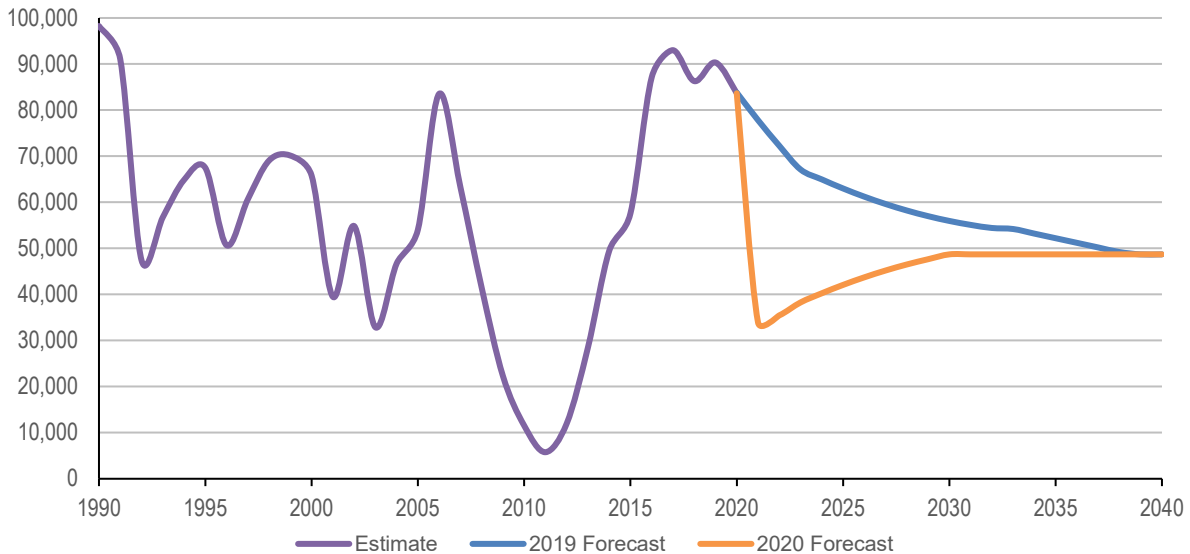
<sup>1</sup> *Population estimates* are figures developed for the current or prior years. Estimates are largely developed from administrative data sets that reflect population change. The assumptions in population estimates generally reflect statistically based and ratio-based relationships between population and indicator data such as housing, tax filers or voters. Thus, estimates are based on actual data and the assumption that previously established relationships will continue. *Population forecasts* are future population expectations. While growth assumptions are usually developed from prior growth trends, the forecast figures are not grounded on actual events and current data. Population forecasts are often developed from forecasts of specific data sets related to population change.

2040, up from 82.7. To account for near-term deaths due to COVID-19, 2021 life expectancies were reduced by 0.4 years for males and 0.35 for females. While experts have long accepted that females outlive males, the gender gap has narrowed in major developed countries over the past two decades. This is mostly due to lifestyle changes and advances in medicine (Mayhew & Smith, 2012).

Even with increases in life expectancy, deaths are projected to occur at an increasing rate. As Washington’s population becomes larger and the baby boomer population continues to age, the state will experience higher mortality. Washington’s crude death rate is projected to rise from 7.8 deaths per 1,000 people in 2020 to 8.1 in 2025 and 9.9 by 2040.

**Net migration:** Net migration is an important, but difficult-to-predict component of population change. Although migration typically follows a cyclical pattern related to periods of economic expansion and contraction, some migration, such as military and retiree movement, is not entirely economic. To forecast near-term migration, OFM uses an econometric model that weighs Washington’s relative attractiveness to job seekers against that of California and other states. Near-term migration is then transitioned into the long-term migration expectation over a period of several years. For the present forecast, a steep downwards adjustment was applied to near-term migration to account for the effects of the pandemic, the economic recession and recent changes in federal immigration policy.

**Figure 1.1: Actual, estimated and predicted net migration, 1990–2040**



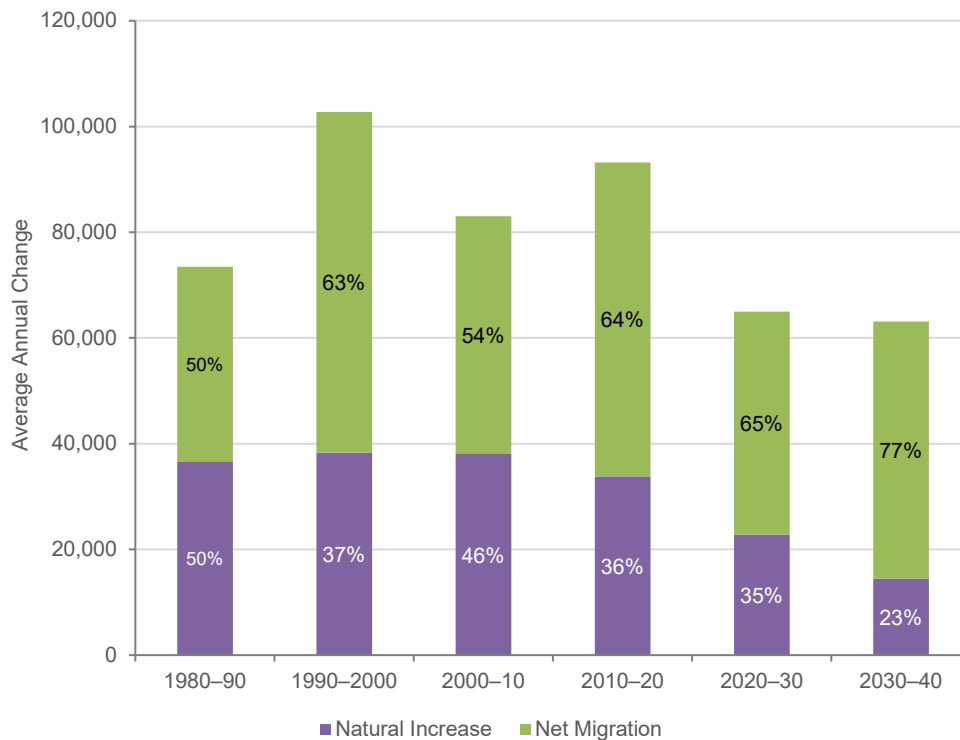
We present actual, estimated and predicted net migration values in Figure 1.1. The net migration estimate for 2020 is 83,600. That’s approximately 100 people lower than last year’s forecast. The migration estimate for 2020 represents the fifth consecutive year that migration has surpassed last decade’s peak of 83,500, which occurred in 2006. The present forecast assumes a large drop in net migration in 2021. However, as unemployment declines and the pandemic recedes, net migration will recover. For the 2020–30 period, net migration is 215,500 people lower than the prior forecast. The state’s long-term migration assumption of 48,700 toward the end of the forecast horizon remains the same.

## Part 2: Discussion of state population change

The components of population change are births, deaths and migration. Natural increase is the number of births minus the number of deaths. Net migration is the difference between in- and out-migration. The dynamic nature of population change in Washington is shown in Figure 2.1, with additional detail provided in Table 2.1. Between 2010 and 2040, Washington’s population is expected to grow by about 2,212,600 people, reaching 8,937,100 in 2040. Approximately 68 percent (1,502,500 people) of the increase is due to net migration with the other 32 percent (710,100 people) due to natural increase.

We expect natural increase to decline from about 26,100 in 2020 to 11,400 by 2040. While births are projected to gradually increase over the forecast horizon, the number of deaths will rise sharply with the aging of the baby boomers. In the future, state population growth will become more dependent upon migration as natural increase moderates.

**Figure 2.1: Components of population change by decade, 1980–2040**



**Table 2.1: Components of population change, 2000–40**

	April 1 Population at End of Period	Population Change		Components of Change from Previous Period						
		Number	Percentage	Births		Deaths		Natural	Net Migration	
				Number	Rate	Number	Rate	Increase	Number	Rate
2000–01	5,970,452	76,309	1.29	80,732	13.61	43,923	7.40	36,809	39,500	6.66
2001–02	6,059,698	89,246	1.49	79,291	13.18	44,900	7.46	34,391	54,855	9.12
2002–03	6,126,917	67,219	1.11	79,069	12.98	44,731	7.34	34,338	32,881	5.40
2003–04	6,208,532	81,615	1.33	80,957	13.13	46,025	7.46	34,932	46,683	7.57
2004–05	6,298,797	90,265	1.45	81,845	13.09	45,609	7.29	36,236	54,029	8.64
<b>2000–05</b>		<b>404,654</b>		<b>401,894</b>		<b>225,188</b>		<b>176,706</b>	<b>227,948</b>	
2005–06	6,420,219	121,422	1.93	83,170	13.08	45,282	7.12	37,888	83,534	13.14
2006–07	6,525,121	104,902	1.63	87,752	13.56	46,161	7.13	41,591	63,311	9.78
2007–08	6,608,234	83,113	1.27	89,568	13.64	47,947	7.30	41,621	41,492	6.32
2008–09	6,672,263	64,029	0.97	89,838	13.53	48,116	7.25	41,722	22,307	3.36
2009–10	6,724,540	52,277	0.78	88,408	13.20	47,672	7.12	40,736	11,541	1.72
<b>2005–10</b>		<b>425,743</b>		<b>438,736</b>		<b>235,178</b>		<b>203,558</b>	<b>222,185</b>	
2010–11	6,767,900	43,360	0.64	86,383	12.80	48,786	7.23	37,597	5,763	0.85
2011–12	6,817,770	49,870	0.73	87,134	12.83	49,231	7.25	37,903	11,967	1.76
2012–13	6,882,400	64,630	0.94	87,250	12.74	51,109	7.46	36,141	28,489	4.16
2013–14	6,968,170	85,770	1.24	87,026	12.57	50,711	7.32	36,315	49,455	7.14
2014–15	7,061,410	93,240	1.33	88,479	12.61	52,848	7.53	35,631	57,609	8.21
<b>2010–15</b>		<b>336,870</b>		<b>436,272</b>		<b>252,685</b>		<b>183,587</b>	<b>153,283</b>	
2015–16	7,183,700	122,290	1.73	89,819	12.61	54,661	7.67	35,158	87,132	12.23
2016–17	7,310,300	126,600	1.76	89,664	12.37	56,075	7.74	33,589	93,011	12.83
2017–18	7,427,570	117,270	1.60	87,346	11.85	56,372	7.65	30,974	86,296	11.71
2018–19	7,546,410	118,840	1.60	85,708	11.45	57,204	7.64	28,504	90,336	12.07
2019–20	7,656,200	109,790	1.45	85,231	11.21	59,104	7.78	26,127	83,663	11.01
<b>2015–20</b>		<b>594,790</b>		<b>437,768</b>		<b>283,416</b>		<b>154,352</b>	<b>440,438</b>	
2020–21	7,714,660	58,460	0.76	85,632	11.14	61,103	7.95	24,529	33,931	4.41
2021–22	7,776,083	61,423	0.80	86,358	11.15	60,388	7.80	25,970	35,453	4.58
2022–23	7,839,659	63,576	0.82	86,858	11.12	61,547	7.88	25,311	38,265	4.90
2023–24	7,904,355	64,696	0.83	87,261	11.08	62,815	7.98	24,446	40,250	5.11
2024–25	7,969,840	65,485	0.83	87,548	11.03	64,133	8.08	23,415	42,070	5.30
<b>2020–25</b>		<b>313,640</b>		<b>433,657</b>		<b>309,986</b>		<b>123,671</b>	<b>189,969</b>	
2025–26	8,036,167	66,327	0.83	88,145	11.01	65,533	8.19	22,612	43,715	5.46
2026–27	8,103,143	66,976	0.83	88,792	11.00	67,011	8.30	21,781	45,195	5.60
2027–28	8,170,573	67,430	0.83	89,530	11.00	68,605	8.43	20,925	46,505	5.72
2028–29	8,238,162	67,589	0.83	90,315	11.01	70,371	8.58	19,944	47,645	5.81
2029–30	8,305,890	67,728	0.82	91,114	11.01	72,086	8.71	19,028	48,700	5.89
<b>2025–30</b>		<b>336,050</b>		<b>447,896</b>		<b>343,606</b>		<b>104,290</b>	<b>231,760</b>	
2030–31	8,372,736	66,846	0.80	91,908	11.02	73,762	8.85	18,146	48,700	5.84
2031–32	8,438,841	66,105	0.79	92,736	11.03	75,331	8.96	17,405	48,700	5.79
2032–33	8,503,783	64,942	0.77	93,606	11.05	77,364	9.13	16,242	48,700	5.75
2033–34	8,567,704	63,921	0.75	94,457	11.07	79,236	9.28	15,221	48,700	5.71
2034–35	8,630,825	63,121	0.74	95,298	11.08	80,877	9.41	14,421	48,700	5.66
<b>2030–35</b>		<b>324,935</b>		<b>468,005</b>		<b>386,570</b>		<b>81,435</b>	<b>243,500</b>	
2035–36	8,693,232	62,407	0.72	96,156	11.10	82,449	9.52	13,707	48,700	5.62
2036–37	8,755,079	61,847	0.71	97,052	11.12	83,905	9.62	13,147	48,700	5.58
2037–38	8,816,385	61,306	0.70	97,905	11.14	85,299	9.71	12,606	48,700	5.54
2038–39	8,877,046	60,661	0.69	98,657	11.15	86,696	9.80	11,961	48,700	5.50
2039–40	8,937,114	60,068	0.68	99,335	11.15	87,967	9.88	11,368	48,700	5.47
<b>2035–40</b>		<b>306,289</b>		<b>489,105</b>		<b>426,316</b>		<b>62,789</b>	<b>243,500</b>	
<b>2010–40</b>		<b>2,212,574</b>		<b>2,712,703</b>		<b>2,002,579</b>		<b>710,124</b>	<b>1,502,450</b>	

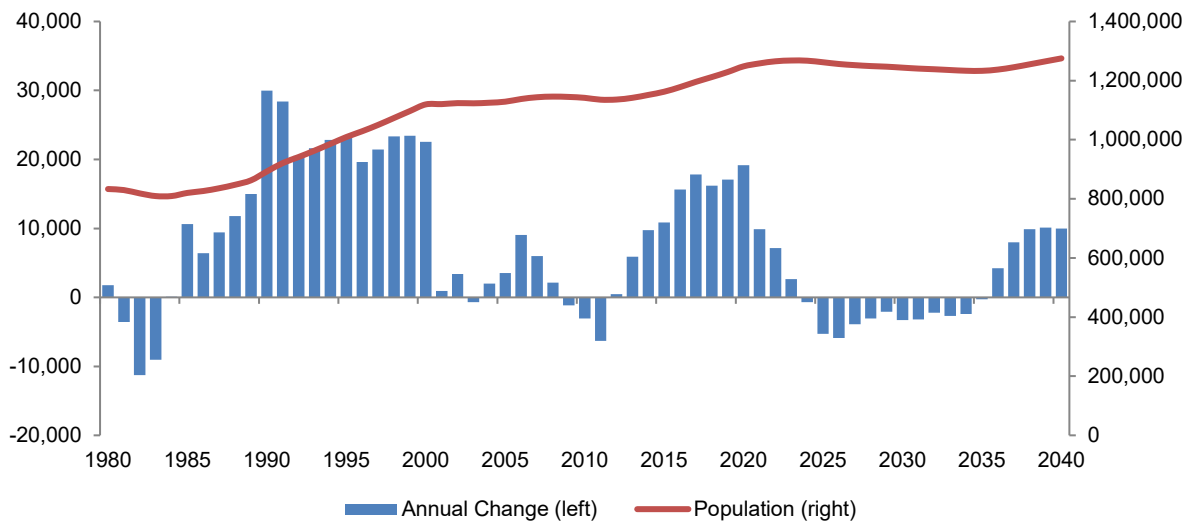
Notes: 1) Unrounded data should not be considered accurate to the last digit. 2) Rates computed per 1,000 population at midpoint of time period. 3) Totals may not add due to rounding.

### Part 3: Discussion of age-specific populations

#### School-age population

People ages 5 through 17 represent the school-age population in kindergarten through 12<sup>th</sup> grade. There are an estimated 1,248,300 young people ages 5 to 17 in 2020. The school-age population has been increasing lately after a period of relatively little change the prior decade. This trend is expected to continue, with an average annual gain of approximately 2,800 people per year through 2025, which is when we expect the population to reach 1,262,000. This growth is partly due to the grandchildren of the baby boomer generation reaching school-age (the “third wave” of the baby boom). By 2040, the number of school-age people will be about 1,275,200.

**Figure 3.1: Population characteristics ages 5–17**



**Table 3.1: Population ages 5–17**

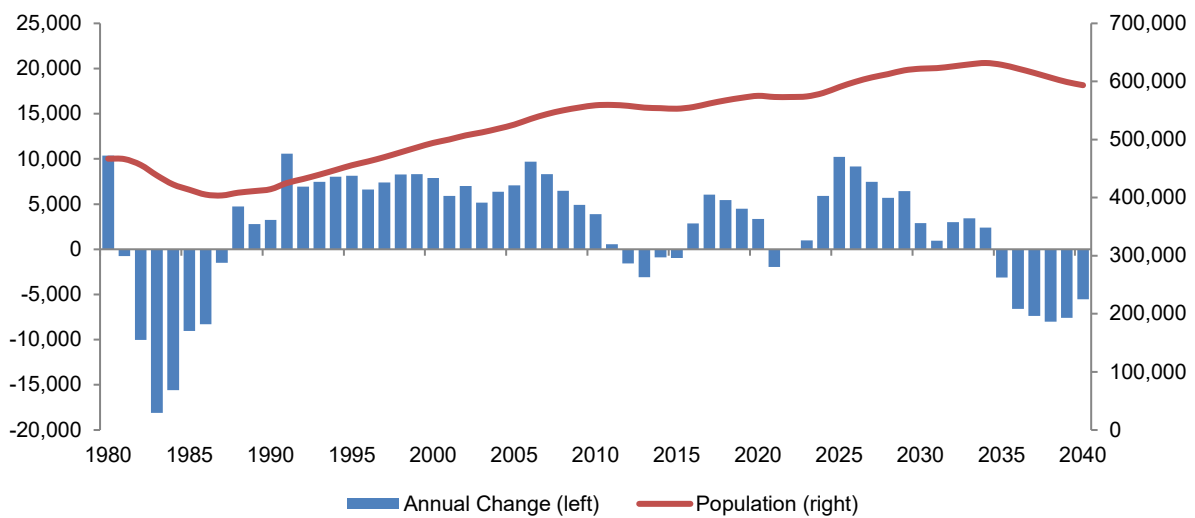
Year	Year	Year	Year	Year	Year	Year	Year	Year	Year		
1980	833,237	1991	921,073	2001	1,120,486	2011	1,135,411	2021	1,258,187	2031	1,240,640
1981	829,672	1992	941,571	2002	1,123,863	2012	1,135,901	2022	1,265,331	2032	1,238,414
1982	818,415	1993	963,176	2003	1,123,183	2013	1,141,797	2023	1,267,994	2033	1,235,723
1983	809,390	1994	986,021	2004	1,125,174	2014	1,151,551	2024	1,267,322	2034	1,233,333
1984	809,474	1995	1,009,134	2005	1,128,718	2015	1,162,417	2025	1,262,039	2035	1,233,051
1985	820,108	1996	1,028,785	2006	1,137,756	2016	1,178,058	2026	1,256,133	2036	1,237,269
1986	826,508	1997	1,050,205	2007	1,143,750	2017	1,195,874	2027	1,252,256	2037	1,245,236
1987	835,931	1998	1,073,564	2008	1,145,885	2018	1,212,048	2028	1,249,181	2038	1,255,123
1988	847,720	1999	1,097,002	2009	1,144,749	2019	1,229,103	2029	1,247,094	2039	1,265,218
1989	862,705	2000	1,119,533	2010	1,141,697	2020	1,248,287	2030	1,243,814	2040	1,275,175
1990	892,690										



### College-age population

People ages 17 through 22 comprise labor force entrants, young workers and the majority of students in postsecondary institutions. There are an estimated 575,300 people ages 17 through 22 in 2020. The number of people in this age group is expected to increase by 3,000 people per year through 2025, when the population will reach 590,400. After 2025, this population is expected to grow by an additional 3,100 people, reaching 593,500 by 2040, with most of the growth between 2025 and 2030.

**Figure 3.2: Population characteristics ages 17–22**



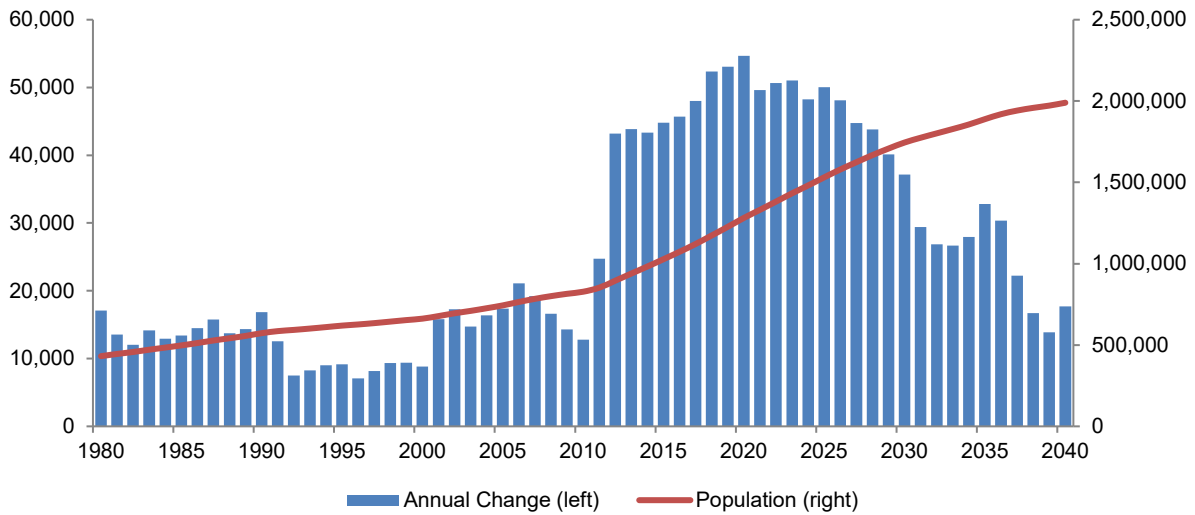
**Table 3.2: Population ages 17–22**

Year	Year	Year	Year	Year	Year	Year	Year	Year	Year		
1980	467,078	1991	425,172	2001	500,143	2011	559,590	2021	573,296	2031	622,965
1981	466,341	1992	432,118	2002	507,153	2012	558,028	2022	573,261	2032	625,982
1982	456,307	1993	439,581	2003	512,313	2013	554,922	2023	574,238	2033	629,399
1983	438,205	1994	447,614	2004	518,680	2014	554,028	2024	580,154	2034	631,789
1984	422,619	1995	455,764	2005	525,768	2015	553,060	2025	590,373	2035	628,656
1985	413,565	1996	462,361	2006	535,454	2016	555,916	2026	599,524	2036	622,045
1986	405,270	1997	469,760	2007	543,761	2017	561,978	2027	607,004	2037	614,670
1987	403,788	1998	478,026	2008	550,250	2018	567,429	2028	612,682	2038	606,644
1988	408,534	1999	486,328	2009	555,147	2019	571,907	2029	619,131	2039	599,064
1989	411,322	2000	494,223	2010	559,017	2020	575,253	2030	622,020	2040	593,545
1990	414,577										

## Senior population

Washington’s population is aging. This major demographic development will have important implications for policymaking and planning at all levels of government. In 2020, there are about 1,281,400 people ages 65 and older. This represents 17 percent of Washington’s total population. By 2040, the elderly population is forecasted to reach 1,989,600. This represents 22 percent of the state’s total population. The majority of the growth will occur between now and 2030. The sharp spike in the 65-and-older population in 2011 corresponds to a similarly sharp spike in births starting in 1946, exactly one year after American service members returned from World War II. These children of 1946 turned 65 in 2011, leading the baby boomer generation into retirement.

**Figure 3.3: Population characteristics ages 65 and older**



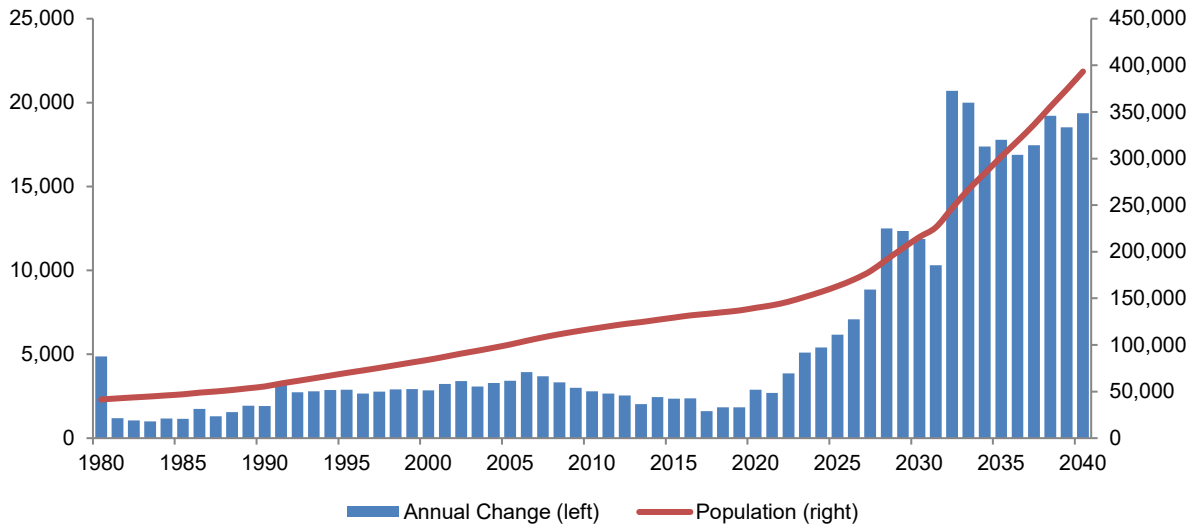
**Table 3.3: Population ages 65 and older**

Year	Year	Year	Year	Year	Year	Year	Year	Year			
1980	431,562	1991	585,458	2001	677,931	2011	852,414	2021	1,331,074	2031	1,774,446
1981	445,116	1992	592,968	2002	695,188	2012	895,629	2022	1,381,750	2032	1,801,319
1982	457,173	1993	601,202	2003	709,905	2013	939,496	2023	1,432,796	2033	1,828,010
1983	471,342	1994	610,213	2004	726,276	2014	982,835	2024	1,481,066	2034	1,855,974
1984	484,286	1995	619,382	2005	743,666	2015	1,027,652	2025	1,531,095	2035	1,888,768
1985	497,708	1996	626,444	2006	764,778	2016	1,073,339	2026	1,579,195	2036	1,919,101
1986	512,219	1997	634,606	2007	783,988	2017	1,121,338	2027	1,623,929	2037	1,941,329
1987	527,983	1998	643,934	2008	800,598	2018	1,173,706	2028	1,667,745	2038	1,958,046
1988	541,731	1999	653,311	2009	814,880	2019	1,226,763	2029	1,707,889	2039	1,971,938
1989	556,077	2000	662,142	2010	827,677	2020	1,281,438	2030	1,745,050	2040	1,989,639
1990	572,914										

### Most-elderly population

Providing for the long-term care needs of the population ages 85 and older will have important fiscal implications for Washington and the nation as a whole. This population, numbering about 139,800 in 2020, is expected to increase by 253,500 people, reaching 393,400 by 2040. Much of this growth will occur after 2030 as the baby boom cohort starts to enter the most-elderly age group, with a 75,900 person increase from 2020–30 and a 177,600 person increase from 2030–40.

**Figure 3.4: Population characteristics ages 85 and older**



**Table 3.4: Population ages 85 and older**

Year	Year	Year	Year	Year	Year	Year	Year	Year	Year		
1980	41,476	1991	58,688	2001	87,304	2011	119,935	2021	142,543	2031	226,064
1981	42,666	1992	61,416	2002	90,713	2012	122,488	2022	146,403	2032	246,765
1982	43,716	1993	64,212	2003	93,789	2013	124,522	2023	151,508	2033	266,755
1983	44,712	1994	67,088	2004	97,080	2014	126,963	2024	156,922	2034	284,131
1984	45,892	1995	69,983	2005	100,509	2015	129,309	2025	163,082	2035	301,906
1985	47,050	1996	72,635	2006	104,449	2016	131,686	2026	170,170	2036	318,790
1986	48,791	1997	75,406	2007	108,139	2017	133,292	2027	179,034	2037	336,240
1987	50,087	1998	78,315	2008	111,473	2018	135,124	2028	191,540	2038	355,459
1988	51,634	1999	81,232	2009	114,480	2019	136,961	2029	203,879	2039	373,990
1989	53,558	2000	84,083	2010	117,271	2020	139,839	2030	215,752	2040	393,357
1990	55,463										

#### **Part 4: References**

Mayhew, L., & Smith, D. (2012). Gender convergence in human survival and the postponement of death. Actuarial Research Paper No. 200. Retrieved from <http://openaccess.city.ac.uk/2331/1/200ARP.pdf>.

U.S. Census Bureau (2014). National Population Projections [Data files and code book]. Retrieved from <https://www.census.gov/data/datasets/2014/demo/popproj/2014-popproj.html>.

U.S. Census Bureau (2017). National Population Projections [Data files and code book]. Retrieved from <https://www.census.gov/data/datasets/2017/demo/popproj/2017-popproj.html>.

## **Part 5: Annual population estimates and forecasts, 2010–40**

The following tables present annual population estimates and forecasts by age and sex for the years 2010–40. Figures for 2010 reflect actual decennial census data. Figures for years 2011–20 represent OFM’s postcensal estimates. The forecast years are 2021–40.

**Population by Age and Sex  
Population Census for April 1, 2010  
State of Washington**

**5-Year Age Groups**

Age	Total	Male	Female
<b>Total</b>	6,724,540	3,349,707	3,374,833
<b>0-4</b>	439,657	225,088	214,569
<b>5-9</b>	429,877	219,702	210,175
<b>10-14</b>	438,233	224,717	213,516
<b>15-19</b>	462,128	237,577	224,551
<b>20-24</b>	461,512	238,131	223,381
<b>25-29</b>	480,398	245,014	235,384
<b>30-34</b>	453,383	229,863	223,520
<b>35-39</b>	448,607	226,850	221,757
<b>40-44</b>	459,698	232,587	227,111
<b>45-49</b>	492,909	246,507	246,402
<b>50-54</b>	495,296	245,997	249,299
<b>55-59</b>	453,078	221,321	231,757
<b>60-64</b>	382,087	186,378	195,709
<b>65-69</b>	270,474	131,064	139,410
<b>70-74</b>	186,746	88,760	97,986
<b>75-79</b>	142,068	64,325	77,743
<b>80-84</b>	111,118	45,743	65,375
<b>85+</b>	117,271	40,083	77,188

**Percentage of Total Population**

Age	Total	Male	Female
<b>Total</b>	100.0000	49.8132	50.1868
<b>0-4</b>	6.5381	3.3473	3.1908
<b>5-9</b>	6.3927	3.2672	3.1255
<b>10-14</b>	6.5169	3.3417	3.1752
<b>15-19</b>	6.8723	3.5330	3.3393
<b>20-24</b>	6.8631	3.5412	3.3219
<b>25-29</b>	7.1440	3.6436	3.5004
<b>30-34</b>	6.7422	3.4183	3.3239
<b>35-39</b>	6.6712	3.3735	3.2977
<b>40-44</b>	6.8361	3.4588	3.3773
<b>45-49</b>	7.3300	3.6658	3.6642
<b>50-54</b>	7.3655	3.6582	3.7073
<b>55-59</b>	6.7377	3.2912	3.4464
<b>60-64</b>	5.6820	2.7716	2.9104
<b>65-69</b>	4.0222	1.9490	2.0732
<b>70-74</b>	2.7771	1.3199	1.4571
<b>75-79</b>	2.1127	0.9566	1.1561
<b>80-84</b>	1.6524	0.6802	0.9722
<b>85+</b>	1.7439	0.5961	1.1479

**Components of Change**

	Total	Male	Female
<b>Births</b>	88,408	.	.
<b>Deaths</b>	47,672	.	.
<b>Natural Increase</b>	40,736	.	.
<b>Migrants</b>	11,541	.	.
<b>Total Change</b>	52,277	.	.

**Components as % of Previous Year's Total Population**

	Total	Male	Female
<b>Births</b>	1.3250	.	.
<b>Deaths</b>	0.7145	.	.
<b>Natural Increase</b>	0.6105	.	.
<b>Net Migration</b>	0.1730	.	.
<b>Total Change</b>	0.7835	.	.

**Age Detail**

Age	Total	Male	Female	Age	Total	Male	Female	Age	Total	Male	Female
<b>0-24</b>	2,231,407	1,145,215	1,086,192	<b>12</b>	87,497	44,829	42,668	<b>60-65</b>	442,446	215,605	226,841
<b>0</b>	87,016	44,493	42,523	<b>13</b>	87,399	44,721	42,678	<b>60</b>	82,770	40,433	42,337
<b>1</b>	87,607	44,594	43,013	<b>14</b>	87,582	44,878	42,704	<b>61</b>	79,684	39,161	40,523
<b>2</b>	89,399	45,846	43,553	<b>15</b>	89,006	45,607	43,399	<b>62</b>	81,056	39,293	41,763
<b>3</b>	89,097	45,742	43,355	<b>16</b>	90,813	46,516	44,297	<b>63</b>	79,021	38,574	40,447
<b>4</b>	86,538	44,413	42,125	<b>17</b>	93,768	48,572	45,196	<b>64</b>	59,556	28,917	30,639
<b>5</b>	86,550	44,379	42,171	<b>18</b>	94,467	48,726	45,741	<b>65</b>	60,359	29,227	31,132
<b>6</b>	85,890	43,896	41,994	<b>19</b>	94,074	48,156	45,918				
<b>7</b>	84,916	43,086	41,830	<b>20</b>	94,086	48,909	45,177				
<b>8</b>	85,058	43,492	41,566	<b>21</b>	91,883	47,583	44,300				
<b>9</b>	87,463	44,849	42,614	<b>22</b>	90,739	46,693	44,046				
<b>10</b>	88,129	45,209	42,920	<b>23</b>	90,837	46,822	44,015				
<b>11</b>	87,626	45,080	42,546	<b>24</b>	93,967	48,124	45,843				

**Median Age**

Total	Male	Female
37.3	36.2	38.3

**Notes:**

- 1) Unrounded data should not be considered accurate to the last digit.
- 2) Age detail data are provided to develop a variety of age groupings. Single year age values should not be considered reliable.
- 3) Totals may not add due to rounding.

**Population by Age and Sex**  
**Population Estimate for April 1, 2011**  
**State of Washington**

**5-Year Age Groups**

Age	Total	Male	Female
<b>Total</b>	6,767,900	3,372,248	3,395,652
<b>0-4</b>	438,885	224,542	214,343
<b>5-9</b>	429,397	219,489	209,908
<b>10-14</b>	438,463	224,870	213,593
<b>15-19</b>	455,937	234,424	221,513
<b>20-24</b>	462,100	238,320	223,780
<b>25-29</b>	478,335	244,415	233,920
<b>30-34</b>	463,031	234,722	228,309
<b>35-39</b>	437,337	220,891	216,446
<b>40-44</b>	467,743	236,891	230,852
<b>45-49</b>	480,231	240,746	239,485
<b>50-54</b>	497,288	247,123	250,165
<b>55-59</b>	463,953	226,915	237,038
<b>60-64</b>	402,786	196,040	206,746
<b>65-69</b>	281,726	136,277	145,449
<b>70-74</b>	194,834	92,871	101,963
<b>75-79</b>	143,589	65,324	78,265
<b>80-84</b>	112,330	47,007	65,323
<b>85+</b>	119,935	41,381	78,554

**Percentage of Total Population**

Age	Total	Male	Female
<b>Total</b>	100.0000	49.8271	50.1729
<b>0-4</b>	6.4848	3.3177	3.1671
<b>5-9</b>	6.3446	3.2431	3.1015
<b>10-14</b>	6.4786	3.3226	3.1560
<b>15-19</b>	6.7368	3.4638	3.2730
<b>20-24</b>	6.8278	3.5213	3.3065
<b>25-29</b>	7.0677	3.6114	3.4563
<b>30-34</b>	6.8416	3.4682	3.3734
<b>35-39</b>	6.4619	3.2638	3.1981
<b>40-44</b>	6.9112	3.5002	3.4110
<b>45-49</b>	7.0957	3.5572	3.5385
<b>50-54</b>	7.3477	3.6514	3.6963
<b>55-59</b>	6.8552	3.3528	3.5024
<b>60-64</b>	5.9514	2.8966	3.0548
<b>65-69</b>	4.1627	2.0136	2.1491
<b>70-74</b>	2.8788	1.3722	1.5066
<b>75-79</b>	2.1216	0.9652	1.1564
<b>80-84</b>	1.6597	0.6946	0.9652
<b>85+</b>	1.7721	0.6114	1.1607

**Components of Change**

	Total	Male	Female
<b>Births</b>	86,383	44,228	42,155
<b>Deaths</b>	48,786	24,596	24,190
<b>Natural Increase</b>	37,597	19,632	17,965
<b>Net Migration</b>	5,763	2,909	2,854
<b>Total Change</b>	43,360	22,541	20,819

**Components as % of Previous Year's Total Population**

	Total	Male	Female
<b>Births</b>	1.2846	0.6577	0.6269
<b>Deaths</b>	0.7255	0.3658	0.3597
<b>Natural Increase</b>	0.5591	0.2919	0.2672
<b>Net Migration</b>	0.0857	0.0433	0.0424
<b>Total Change</b>	0.6448	0.3352	0.3096

**Age Detail**

Age	Total	Male	Female	Age	Total	Male	Female	Age	Total	Male	Female
<b>0-24</b>	2,224,782	1,141,645	1,083,137	<b>12</b>	87,695	45,117	42,578	<b>60-65</b>	461,727	224,589	237,138
<b>0</b>	85,867	43,939	41,928	<b>13</b>	87,560	44,861	42,699	<b>60</b>	83,028	40,270	42,758
<b>1</b>	86,652	44,291	42,361	<b>14</b>	87,457	44,750	42,707	<b>61</b>	82,131	40,039	42,092
<b>2</b>	87,658	44,616	43,042	<b>15</b>	87,634	44,902	42,732	<b>62</b>	79,025	38,755	40,270
<b>3</b>	89,503	45,899	43,604	<b>16</b>	89,055	45,628	43,427	<b>63</b>	80,337	38,859	41,478
<b>4</b>	89,205	45,797	43,408	<b>17</b>	90,862	46,534	44,328	<b>64</b>	78,265	38,117	40,148
<b>5</b>	86,635	44,461	42,174	<b>18</b>	93,825	48,594	45,231	<b>65</b>	58,941	28,549	30,392
<b>6</b>	86,642	44,426	42,216	<b>19</b>	94,561	48,766	45,795				
<b>7</b>	85,977	43,940	42,037	<b>20</b>	94,167	48,195	45,972				
<b>8</b>	85,002	43,128	41,874	<b>21</b>	94,194	48,949	45,245				
<b>9</b>	85,141	43,534	41,607	<b>22</b>	91,981	47,612	44,369				
<b>10</b>	87,550	44,893	42,657	<b>23</b>	90,829	46,717	44,112				
<b>11</b>	88,201	45,249	42,952	<b>24</b>	90,929	46,847	44,082				

**Median Age**

Total	Male	Female
37.5	36.5	38.6

**Notes:**

- 1) Unrounded data should not be considered accurate to the last digit.
- 2) Age detail data are provided to develop a variety of age groupings. Single year age values should not be considered reliable.
- 3) Totals may not add due to rounding.

**Population by Age and Sex**  
**Population Estimate for April 1, 2012**  
**State of Washington**

<b>5-Year Age Groups</b>				<b>Percentage of Total Population</b>			
<b>Age</b>	<b>Total</b>	<b>Male</b>	<b>Female</b>	<b>Age</b>	<b>Total</b>	<b>Male</b>	<b>Female</b>
<b>Total</b>	6,817,770	3,397,971	3,419,799	<b>Total</b>	100.0000	49.8399	50.1601
<b>0-4</b>	436,713	223,260	213,453	<b>0-4</b>	6.4055	3.2747	3.1308
<b>5-9</b>	434,460	222,259	212,201	<b>5-9</b>	6.3725	3.2600	3.1125
<b>10-14</b>	436,907	224,050	212,857	<b>10-14</b>	6.4084	3.2863	3.1221
<b>15-19</b>	449,623	230,784	218,839	<b>15-19</b>	6.5949	3.3850	3.2098
<b>20-24</b>	467,107	240,844	226,263	<b>20-24</b>	6.8513	3.5326	3.3187
<b>25-29</b>	473,373	242,334	231,039	<b>25-29</b>	6.9432	3.5544	3.3888
<b>30-34</b>	472,608	239,853	232,755	<b>30-34</b>	6.9320	3.5181	3.4139
<b>35-39</b>	435,120	219,660	215,460	<b>35-39</b>	6.3821	3.2219	3.1603
<b>40-44</b>	470,210	238,294	231,916	<b>40-44</b>	6.8968	3.4952	3.4016
<b>45-49</b>	468,798	235,173	233,625	<b>45-49</b>	6.8761	3.4494	3.4267
<b>50-54</b>	496,614	247,001	249,613	<b>50-54</b>	7.2841	3.6229	3.6612
<b>55-59</b>	472,980	231,698	241,282	<b>55-59</b>	6.9375	3.3984	3.5390
<b>60-64</b>	407,628	198,065	209,563	<b>60-64</b>	5.9789	2.9051	3.0738
<b>65-69</b>	307,889	148,717	159,172	<b>65-69</b>	4.5160	2.1813	2.3347
<b>70-74</b>	205,466	98,320	107,146	<b>70-74</b>	3.0137	1.4421	1.5716
<b>75-79</b>	146,942	67,236	79,706	<b>75-79</b>	2.1553	0.9862	1.1691
<b>80-84</b>	112,844	47,882	64,962	<b>80-84</b>	1.6551	0.7023	0.9528
<b>85+</b>	122,488	42,541	79,947	<b>85+</b>	1.7966	0.6240	1.1726

<b>Components of Change</b>			
	<b>Total</b>	<b>Male</b>	<b>Female</b>
<b>Births</b>	87,134	44,612	42,522
<b>Deaths</b>	49,231	24,929	24,302
<b>Natural Increase</b>	37,903	19,683	18,220
<b>Net Migration</b>	11,967	6,040	5,927
<b>Total Change</b>	49,870	25,723	24,147

<b>Components as % of Previous Year's Total Population</b>			
	<b>Total</b>	<b>Male</b>	<b>Female</b>
<b>Births</b>	1.2875	0.6592	0.6283
<b>Deaths</b>	0.7274	0.3683	0.3591
<b>Natural Increase</b>	0.5600	0.2908	0.2692
<b>Net Migration</b>	0.1768	0.0892	0.0876
<b>Total Change</b>	0.7369	0.3801	0.3568

<b>Age Detail</b>											
<b>Age</b>	<b>Total</b>	<b>Male</b>	<b>Female</b>	<b>Age</b>	<b>Total</b>	<b>Male</b>	<b>Female</b>	<b>Age</b>	<b>Total</b>	<b>Male</b>	<b>Female</b>
<b>0-24</b>	2,224,810	1,141,197	1,083,613	<b>12</b>	88,351	45,328	43,023	<b>60-65</b>	485,135	235,722	249,413
<b>0</b>	86,621	44,325	42,296	<b>13</b>	87,833	45,188	42,645	<b>60</b>	85,704	41,748	43,956
<b>1</b>	85,600	43,787	41,813	<b>14</b>	87,694	44,929	42,765	<b>61</b>	82,434	39,899	42,535
<b>2</b>	86,845	44,386	42,459	<b>15</b>	87,582	44,811	42,771	<b>62</b>	81,498	39,645	41,853
<b>3</b>	87,899	44,738	43,161	<b>16</b>	87,763	44,964	42,799	<b>63</b>	78,371	38,350	40,021
<b>4</b>	89,748	46,024	43,724	<b>17</b>	89,189	45,688	43,501	<b>64</b>	79,621	38,423	41,198
<b>5</b>	89,432	45,912	43,520	<b>18</b>	91,021	46,607	44,414	<b>65</b>	77,507	37,657	39,850
<b>6</b>	86,838	44,565	42,273	<b>19</b>	94,068	48,714	45,354				
<b>7</b>	86,836	44,525	42,311	<b>20</b>	94,813	48,890	45,923				
<b>8</b>	86,168	44,036	42,132	<b>21</b>	94,459	48,326	46,133				
<b>9</b>	85,186	43,221	41,965	<b>22</b>	94,478	49,070	45,408				
<b>10</b>	85,324	43,627	41,697	<b>23</b>	92,254	47,726	44,528				
<b>11</b>	87,705	44,978	42,727	<b>24</b>	91,103	46,832	44,271				

<b>Median Age</b>		
<b>Total</b>	<b>Male</b>	<b>Female</b>
37.7	36.7	38.8

**Notes:**

- 1) Unrounded data should not be considered accurate to the last digit.
- 2) Age detail data are provided to develop a variety of age groupings. Single year age values should not be considered reliable.
- 3) Totals may not add due to rounding.



**Population by Age and Sex**  
**Population Estimate for April 1, 2013**  
**State of Washington**

**5-Year Age Groups**

Age	Total	Male	Female
<b>Total</b>	6,882,400	3,431,037	3,451,363
<b>0-4</b>	435,418	222,475	212,943
<b>5-9</b>	441,499	226,328	215,171
<b>10-14</b>	436,242	223,298	212,944
<b>15-19</b>	445,303	228,023	217,280
<b>20-24</b>	473,826	244,517	229,309
<b>25-29</b>	471,008	241,345	229,663
<b>30-34</b>	482,031	245,224	236,807
<b>35-39</b>	440,236	222,267	217,969
<b>40-44</b>	467,225	236,496	230,729
<b>45-49</b>	459,213	230,723	228,490
<b>50-54</b>	495,559	246,569	248,990
<b>55-59</b>	479,090	235,115	243,975
<b>60-64</b>	416,254	202,265	213,989
<b>65-69</b>	328,533	158,274	170,259
<b>70-74</b>	220,790	105,700	115,090
<b>75-79</b>	152,352	70,069	82,283
<b>80-84</b>	113,299	48,587	64,712
<b>85+</b>	124,522	43,762	80,760

**Percentage of Total Population**

Age	Total	Male	Female
<b>Total</b>	100.0000	49.8523	50.1477
<b>0-4</b>	6.3265	3.2325	3.0940
<b>5-9</b>	6.4149	3.2885	3.1264
<b>10-14</b>	6.3385	3.2445	3.0940
<b>15-19</b>	6.4702	3.3131	3.1570
<b>20-24</b>	6.8846	3.5528	3.3318
<b>25-29</b>	6.8437	3.5067	3.3370
<b>30-34</b>	7.0038	3.5631	3.4408
<b>35-39</b>	6.3965	3.2295	3.1670
<b>40-44</b>	6.7887	3.4362	3.3524
<b>45-49</b>	6.6723	3.3524	3.3199
<b>50-54</b>	7.2004	3.5826	3.6178
<b>55-59</b>	6.9611	3.4162	3.5449
<b>60-64</b>	6.0481	2.9389	3.1092
<b>65-69</b>	4.7735	2.2997	2.4738
<b>70-74</b>	3.2080	1.5358	1.6722
<b>75-79</b>	2.2136	1.0181	1.1956
<b>80-84</b>	1.6462	0.7060	0.9403
<b>85+</b>	1.8093	0.6359	1.1734

**Components of Change**

	Total	Male	Female
<b>Births</b>	87,250	44,672	42,578
<b>Deaths</b>	51,109	25,987	25,122
<b>Natural Increase</b>	36,141	18,685	17,456
<b>Net Migration</b>	28,489	14,381	14,108
<b>Total Change</b>	64,630	33,066	31,564

**Components as % of Previous Year's Total Population**

	Total	Male	Female
<b>Births</b>	1.2797	0.6552	0.6245
<b>Deaths</b>	0.7496	0.3812	0.3685
<b>Natural Increase</b>	0.5301	0.2741	0.2560
<b>Net Migration</b>	0.4179	0.2109	0.2069
<b>Total Change</b>	0.9480	0.4850	0.4630

**Age Detail**

Age	Total	Male	Female	Age	Total	Male	Female	Age	Total	Male	Female
<b>0-24</b>	2,232,288	1,144,641	1,087,647	<b>12</b>	88,064	45,167	42,897	<b>60-65</b>	495,206	240,268	254,938
<b>0</b>	86,728	44,380	42,348	<b>13</b>	88,691	45,502	43,189	<b>60</b>	90,491	44,084	46,407
<b>1</b>	86,579	44,288	42,291	<b>14</b>	88,165	45,358	42,807	<b>61</b>	85,184	41,405	43,779
<b>2</b>	86,164	44,071	42,093	<b>15</b>	88,016	45,091	42,925	<b>62</b>	81,893	39,546	42,347
<b>3</b>	87,451	44,695	42,756	<b>16</b>	87,922	44,981	42,941	<b>63</b>	80,920	39,270	41,650
<b>4</b>	88,496	45,041	43,455	<b>17</b>	88,118	45,133	42,985	<b>64</b>	77,766	37,960	39,806
<b>5</b>	90,305	46,308	43,997	<b>18</b>	89,605	45,893	43,712	<b>65</b>	78,952	38,003	40,949
<b>6</b>	89,945	46,175	43,770	<b>19</b>	91,642	46,925	44,717				
<b>7</b>	87,318	44,811	42,507	<b>20</b>	94,736	49,061	45,675				
<b>8</b>	87,307	44,765	42,542	<b>21</b>	95,592	49,266	46,326				
<b>9</b>	86,624	44,269	42,355	<b>22</b>	95,229	48,679	46,550				
<b>10</b>	85,632	43,447	42,185	<b>23</b>	95,249	49,428	45,821				
<b>11</b>	85,690	43,824	41,866	<b>24</b>	93,020	48,083	44,937				

**Median Age**

Total	Male	Female
37.9	36.9	38.9

**Notes:**

- 1) Unrounded data should not be considered accurate to the last digit.
- 2) Age detail data are provided to develop a variety of age groupings. Single year age values should not be considered reliable.
- 3) Totals may not add due to rounding.

**Population by Age and Sex**  
**Population Estimate for April 1, 2014**  
**State of Washington**

**5-Year Age Groups**

Age	Total	Male	Female
<b>Total</b>	6,968,170	3,474,653	3,493,517
<b>0-4</b>	436,847	223,429	213,418
<b>5-9</b>	447,727	229,327	218,400
<b>10-14</b>	437,910	223,873	214,037
<b>15-19</b>	445,462	228,295	217,167
<b>20-24</b>	479,231	246,661	232,570
<b>25-29</b>	475,139	243,774	231,365
<b>30-34</b>	491,442	250,321	241,121
<b>35-39</b>	449,007	227,002	222,005
<b>40-44</b>	460,377	232,695	227,682
<b>45-49</b>	455,655	229,577	226,078
<b>50-54</b>	494,829	246,333	248,496
<b>55-59</b>	483,415	237,963	245,452
<b>60-64</b>	428,294	207,292	221,002
<b>65-69</b>	346,563	167,150	179,413
<b>70-74</b>	236,603	113,119	123,484
<b>75-79</b>	158,889	73,395	85,494
<b>80-84</b>	113,817	49,309	64,508
<b>85+</b>	126,963	45,138	81,825

**Percentage of Total Population**

Age	Total	Male	Female
<b>Total</b>	100.0000	49.8646	50.1354
<b>0-4</b>	6.2692	3.2064	3.0628
<b>5-9</b>	6.4253	3.2911	3.1343
<b>10-14</b>	6.2844	3.2128	3.0716
<b>15-19</b>	6.3928	3.2763	3.1166
<b>20-24</b>	6.8774	3.5398	3.3376
<b>25-29</b>	6.8187	3.4984	3.3203
<b>30-34</b>	7.0527	3.5923	3.4603
<b>35-39</b>	6.4437	3.2577	3.1860
<b>40-44</b>	6.6069	3.3394	3.2675
<b>45-49</b>	6.5391	3.2947	3.2444
<b>50-54</b>	7.1013	3.5351	3.5662
<b>55-59</b>	6.9375	3.4150	3.5225
<b>60-64</b>	6.1464	2.9748	3.1716
<b>65-69</b>	4.9735	2.3988	2.5748
<b>70-74</b>	3.3955	1.6234	1.7721
<b>75-79</b>	2.2802	1.0533	1.2269
<b>80-84</b>	1.6334	0.7076	0.9258
<b>85+</b>	1.8220	0.6478	1.1743

**Components of Change**

	Total	Male	Female
<b>Births</b>	87,026	44,557	42,469
<b>Deaths</b>	50,711	25,902	24,809
<b>Natural Increase</b>	36,315	18,655	17,660
<b>Net Migration</b>	49,455	24,961	24,494
<b>Total Change</b>	85,770	43,616	42,154

**Components as % of Previous Year's Total Population**

	Total	Male	Female
<b>Births</b>	1.2645	0.6474	0.6171
<b>Deaths</b>	0.7368	0.3764	0.3605
<b>Natural Increase</b>	0.5277	0.2711	0.2566
<b>Net Migration</b>	0.7186	0.3627	0.3559
<b>Total Change</b>	1.2462	0.6337	0.6125

**Age Detail**

Age	Total	Male	Female	Age	Total	Male	Female	Age	Total	Male	Female
<b>0-24</b>	2,247,177	1,151,585	1,095,592	<b>12</b>	86,298	44,143	42,155	<b>60-65</b>	505,569	244,915	260,654
<b>0</b>	86,522	44,275	42,247	<b>13</b>	88,656	45,470	43,186	<b>60</b>	91,488	44,198	47,290
<b>1</b>	86,989	44,498	42,491	<b>14</b>	89,277	45,802	43,475	<b>61</b>	90,099	43,795	46,304
<b>2</b>	87,624	44,819	42,805	<b>15</b>	88,734	45,648	43,086	<b>62</b>	84,780	41,111	43,669
<b>3</b>	87,223	44,612	42,611	<b>16</b>	88,624	45,399	43,225	<b>63</b>	81,470	39,243	42,227
<b>4</b>	88,489	45,225	43,264	<b>17</b>	88,556	45,287	43,269	<b>64</b>	80,457	38,945	41,512
<b>5</b>	89,456	45,528	43,928	<b>18</b>	88,856	45,503	43,353	<b>65</b>	77,275	37,623	39,652
<b>6</b>	91,207	46,771	44,436	<b>19</b>	90,692	46,458	44,234				
<b>7</b>	90,809	46,618	44,191	<b>20</b>	92,808	47,533	45,275				
<b>8</b>	88,143	45,233	42,910	<b>21</b>	96,126	49,748	46,378				
<b>9</b>	88,112	45,177	42,935	<b>22</b>	96,990	49,929	47,061				
<b>10</b>	87,411	44,671	42,740	<b>23</b>	96,632	49,337	47,295				
<b>11</b>	86,268	43,787	42,481	<b>24</b>	96,675	50,114	46,561				

**Median Age**

Total	Male	Female
38.0	37.0	39.0

**Notes:**

- 1) Unrounded data should not be considered accurate to the last digit.
- 2) Age detail data are provided to develop a variety of age groupings. Single year age values should not be considered reliable.
- 3) Totals may not add due to rounding.

**Population by Age and Sex**  
**Population Estimate for April 1, 2015**  
**State of Washington**

**5-Year Age Groups**

Age	Total	Male	Female
<b>Total</b>	7,061,410	3,521,914	3,539,496
<b>0-4</b>	440,342	225,251	215,091
<b>5-9</b>	453,190	231,974	221,216
<b>10-14</b>	440,474	225,182	215,292
<b>15-19</b>	448,274	229,781	218,493
<b>20-24</b>	481,136	246,840	234,296
<b>25-29</b>	481,724	247,751	233,973
<b>30-34</b>	495,912	252,533	243,379
<b>35-39</b>	461,449	233,683	227,766
<b>40-44</b>	452,224	228,358	223,866
<b>45-49</b>	460,339	232,433	227,906
<b>50-54</b>	489,797	244,023	245,774
<b>55-59</b>	487,625	240,643	246,982
<b>60-64</b>	441,272	213,358	227,914
<b>65-69</b>	366,439	176,608	189,831
<b>70-74</b>	251,298	119,911	131,387
<b>75-79</b>	165,125	76,698	88,427
<b>80-84</b>	115,481	50,397	65,084
<b>85+</b>	129,309	46,490	82,819

**Percentage of Total Population**

Age	Total	Male	Female
<b>Total</b>	100.0000	49.8755	50.1245
<b>0-4</b>	6.2359	3.1899	3.0460
<b>5-9</b>	6.4178	3.2851	3.1327
<b>10-14</b>	6.2378	3.1889	3.0489
<b>15-19</b>	6.3482	3.2540	3.0942
<b>20-24</b>	6.8136	3.4956	3.3180
<b>25-29</b>	6.8219	3.5085	3.3134
<b>30-34</b>	7.0228	3.5762	3.4466
<b>35-39</b>	6.5348	3.3093	3.2255
<b>40-44</b>	6.4042	3.2339	3.1703
<b>45-49</b>	6.5191	3.2916	3.2275
<b>50-54</b>	6.9362	3.4557	3.4805
<b>55-59</b>	6.9055	3.4079	3.4976
<b>60-64</b>	6.2491	3.0215	3.2276
<b>65-69</b>	5.1893	2.5010	2.6883
<b>70-74</b>	3.5588	1.6981	1.8606
<b>75-79</b>	2.3384	1.0862	1.2523
<b>80-84</b>	1.6354	0.7137	0.9217
<b>85+</b>	1.8312	0.6584	1.1728

**Components of Change**

	Total	Male	Female
<b>Births</b>	88,479	45,301	43,178
<b>Deaths</b>	52,848	27,116	25,732
<b>Natural Increase</b>	35,631	18,185	17,446
<b>Net Migration</b>	57,609	29,076	28,533
<b>Total Change</b>	93,240	47,261	45,979

**Components as % of Previous Year's Total Population**

	Total	Male	Female
<b>Births</b>	1.2698	0.6501	0.6196
<b>Deaths</b>	0.7584	0.3891	0.3693
<b>Natural Increase</b>	0.5113	0.2610	0.2504
<b>Net Migration</b>	0.8267	0.4173	0.4095
<b>Total Change</b>	1.3381	0.6782	0.6598

**Age Detail**

Age	Total	Male	Female	Age	Total	Male	Female	Age	Total	Male	Female
<b>0-24</b>	2,263,416	1,159,028	1,104,388	<b>12</b>	86,975	44,155	42,820	<b>60-65</b>	521,261	251,973	269,288
<b>0</b>	87,958	45,009	42,949	<b>13</b>	86,968	44,485	42,483	<b>60</b>	95,006	46,189	48,817
<b>1</b>	86,883	44,444	42,439	<b>14</b>	89,334	45,817	43,517	<b>61</b>	91,132	43,925	47,207
<b>2</b>	88,210	45,119	43,091	<b>15</b>	89,944	46,142	43,802	<b>62</b>	89,711	43,500	46,211
<b>3</b>	88,871	45,456	43,415	<b>16</b>	89,444	46,009	43,435	<b>63</b>	84,379	40,811	43,568
<b>4</b>	88,420	45,223	43,197	<b>17</b>	89,365	45,758	43,607	<b>64</b>	81,044	38,933	42,111
<b>5</b>	89,598	45,790	43,808	<b>18</b>	89,416	45,719	43,697	<b>65</b>	79,989	38,615	41,374
<b>6</b>	90,490	46,054	44,436	<b>19</b>	90,105	46,153	43,952				
<b>7</b>	92,220	47,290	44,930	<b>20</b>	92,030	47,157	44,873				
<b>8</b>	91,801	47,126	44,675	<b>21</b>	94,387	48,306	46,081				
<b>9</b>	89,081	45,714	43,367	<b>22</b>	97,757	50,528	47,229				
<b>10</b>	89,037	45,651	43,386	<b>23</b>	98,648	50,715	47,933				
<b>11</b>	88,160	45,074	43,086	<b>24</b>	98,314	50,134	48,180				

**Median Age**

Total	Male	Female
38.1	37.1	39.1

**Notes:**

- 1) Unrounded data should not be considered accurate to the last digit.
- 2) Age detail data are provided to develop a variety of age groupings. Single year age values should not be considered reliable.
- 3) Totals may not add due to rounding.

**Population by Age and Sex**  
**Population Estimate for April 1, 2016**  
**State of Washington**

**5-Year Age Groups**

Age	Total	Male	Female
<b>Total</b>	7,183,700	3,583,710	3,599,990
<b>0-4</b>	447,565	228,947	218,618
<b>5-9</b>	460,239	235,421	224,818
<b>10-14</b>	445,866	228,009	217,857
<b>15-19</b>	453,954	232,730	221,224
<b>20-24</b>	484,890	248,719	236,171
<b>25-29</b>	494,276	253,880	240,396
<b>30-34</b>	503,492	256,865	246,627
<b>35-39</b>	477,260	241,718	235,542
<b>40-44</b>	444,549	224,247	220,302
<b>45-49</b>	471,488	238,337	233,151
<b>50-54</b>	480,002	239,732	240,270
<b>55-59</b>	492,306	243,072	249,234
<b>60-64</b>	454,474	219,941	234,533
<b>65-69</b>	388,637	186,851	201,786
<b>70-74</b>	262,963	125,293	137,670
<b>75-79</b>	172,914	80,560	92,354
<b>80-84</b>	117,139	51,376	65,763
<b>85+</b>	131,686	48,012	83,674

**Percentage of Total Population**

Age	Total	Male	Female
<b>Total</b>	100.0000	49.8867	50.1133
<b>0-4</b>	6.2303	3.1870	3.0433
<b>5-9</b>	6.4067	3.2772	3.1296
<b>10-14</b>	6.2066	3.1740	3.0327
<b>15-19</b>	6.3192	3.2397	3.0795
<b>20-24</b>	6.7499	3.4623	3.2876
<b>25-29</b>	6.8805	3.5341	3.3464
<b>30-34</b>	7.0088	3.5757	3.4331
<b>35-39</b>	6.6437	3.3648	3.2788
<b>40-44</b>	6.1883	3.1216	3.0667
<b>45-49</b>	6.5633	3.3177	3.2456
<b>50-54</b>	6.6818	3.3372	3.3447
<b>55-59</b>	6.8531	3.3837	3.4694
<b>60-64</b>	6.3265	3.0617	3.2648
<b>65-69</b>	5.4100	2.6010	2.8089
<b>70-74</b>	3.6606	1.7441	1.9164
<b>75-79</b>	2.4070	1.1214	1.2856
<b>80-84</b>	1.6306	0.7152	0.9154
<b>85+</b>	1.8331	0.6683	1.1648

**Components of Change**

	Total	Male	Female
<b>Births</b>	89,819	45,987	43,832
<b>Deaths</b>	54,661	28,169	26,492
<b>Natural Increase</b>	35,158	17,818	17,340
<b>Net Migration</b>	87,132	43,978	43,154
<b>Total Change</b>	122,290	61,796	60,494

**Components as % of Previous Year's Total Population**

	Total	Male	Female
<b>Births</b>	1.2720	0.6512	0.6207
<b>Deaths</b>	0.7741	0.3989	0.3752
<b>Natural Increase</b>	0.4979	0.2523	0.2456
<b>Net Migration</b>	1.2339	0.6228	0.6111
<b>Total Change</b>	1.7318	0.8751	0.8567

**Age Detail**

Age	Total	Male	Female	Age	Total	Male	Female	Age	Total	Male	Female
<b>0-24</b>	2,292,514	1,173,826	1,118,688	<b>12</b>	89,244	45,643	43,601	<b>60-65</b>	535,237	258,628	276,609
<b>0</b>	89,286	45,689	43,597	<b>13</b>	87,989	44,669	43,320	<b>60</b>	95,117	46,409	48,708
<b>1</b>	88,723	45,384	43,339	<b>14</b>	87,966	44,994	42,972	<b>61</b>	94,823	45,987	48,836
<b>2</b>	88,749	45,395	43,354	<b>15</b>	90,342	46,332	44,010	<b>62</b>	90,929	43,710	47,219
<b>3</b>	90,102	46,086	44,016	<b>16</b>	91,034	46,697	44,337	<b>63</b>	89,481	43,266	46,215
<b>4</b>	90,705	46,393	44,312	<b>17</b>	90,577	46,564	44,013	<b>64</b>	84,124	40,569	43,555
<b>5</b>	90,086	46,073	44,013	<b>18</b>	90,682	46,425	44,257	<b>65</b>	80,763	38,687	42,076
<b>6</b>	91,153	46,584	44,569	<b>19</b>	91,319	46,712	44,607				
<b>7</b>	91,999	46,821	45,178	<b>20</b>	92,119	47,210	44,909				
<b>8</b>	93,732	48,064	45,668	<b>21</b>	94,401	48,325	46,076				
<b>9</b>	93,269	47,879	45,390	<b>22</b>	96,818	49,464	47,354				
<b>10</b>	90,484	46,434	44,050	<b>23</b>	100,296	51,748	48,548				
<b>11</b>	90,183	46,269	43,914	<b>24</b>	101,256	51,972	49,284				

**Median Age**

Total	Male	Female
38.1	37.1	39.1

**Notes:**

- 1) Unrounded data should not be considered accurate to the last digit.
- 2) Age detail data are provided to develop a variety of age groupings. Single year age values should not be considered reliable.
- 3) Totals may not add due to rounding.

**Population by Age and Sex**  
**Population Estimate for April 1, 2017**  
**State of Washington**

**5-Year Age Groups**

Age	Total	Male	Female
<b>Total</b>	7,310,300	3,647,541	3,662,759
<b>0-4</b>	452,794	231,621	221,173
<b>5-9</b>	465,869	238,120	227,749
<b>10-14</b>	457,255	234,056	223,199
<b>15-19</b>	457,442	234,496	222,946
<b>20-24</b>	487,590	249,644	237,946
<b>25-29</b>	511,760	262,563	249,197
<b>30-34</b>	508,217	259,751	248,466
<b>35-39</b>	493,546	250,314	243,232
<b>40-44</b>	446,062	224,930	221,132
<b>45-49</b>	477,031	241,326	235,705
<b>50-54</b>	471,273	235,544	235,729
<b>55-59</b>	494,284	244,248	250,036
<b>60-64</b>	465,839	225,732	240,107
<b>65-69</b>	395,806	189,923	205,883
<b>70-74</b>	289,007	137,562	151,445
<b>75-79</b>	183,011	85,616	97,395
<b>80-84</b>	120,222	53,030	67,192
<b>85+</b>	133,292	49,065	84,227

**Percentage of Total Population**

Age	Total	Male	Female
<b>Total</b>	100.0000	49.8959	50.1041
<b>0-4</b>	6.1939	3.1684	3.0255
<b>5-9</b>	6.3728	3.2573	3.1155
<b>10-14</b>	6.2549	3.2017	3.0532
<b>15-19</b>	6.2575	3.2077	3.0498
<b>20-24</b>	6.6699	3.4150	3.2549
<b>25-29</b>	7.0005	3.5917	3.4088
<b>30-34</b>	6.9521	3.5532	3.3988
<b>35-39</b>	6.7514	3.4241	3.3273
<b>40-44</b>	6.1018	3.0769	3.0249
<b>45-49</b>	6.5255	3.3012	3.2243
<b>50-54</b>	6.4467	3.2221	3.2246
<b>55-59</b>	6.7615	3.3411	3.4203
<b>60-64</b>	6.3724	3.0879	3.2845
<b>65-69</b>	5.4144	2.5980	2.8163
<b>70-74</b>	3.9534	1.8818	2.0717
<b>75-79</b>	2.5035	1.1712	1.3323
<b>80-84</b>	1.6446	0.7254	0.9191
<b>85+</b>	1.8233	0.6712	1.1522

**Components of Change**

	Total	Male	Female
<b>Births</b>	89,664	45,907	43,757
<b>Deaths</b>	56,075	29,023	27,052
<b>Natural Increase</b>	33,589	16,884	16,705
<b>Net Migration</b>	93,011	46,947	46,064
<b>Total Change</b>	126,600	63,831	62,769

**Components as % of Previous Year's Total Population**

	Total	Male	Female
<b>Births</b>	1.2482	0.6390	0.6091
<b>Deaths</b>	0.7806	0.4040	0.3766
<b>Natural Increase</b>	0.4676	0.2350	0.2325
<b>Net Migration</b>	1.2948	0.6535	0.6412
<b>Total Change</b>	1.7623	0.8886	0.8738

**Age Detail**

Age	Total	Male	Female	Age	Total	Male	Female	Age	Total	Male	Female
<b>0-24</b>	2,320,950	1,187,937	1,133,013	<b>12</b>	91,347	46,882	44,465	<b>60-65</b>	549,701	266,058	283,643
<b>0</b>	89,133	45,610	43,523	<b>13</b>	90,337	46,202	44,135	<b>60</b>	96,266	47,225	49,041
<b>1</b>	90,125	46,102	44,023	<b>14</b>	89,050	45,206	43,844	<b>61</b>	94,962	46,220	48,742
<b>2</b>	90,729	46,406	44,323	<b>15</b>	89,010	45,525	43,485	<b>62</b>	94,640	45,775	48,865
<b>3</b>	90,750	46,418	44,332	<b>16</b>	91,493	46,918	44,575	<b>63</b>	90,728	43,488	47,240
<b>4</b>	92,057	47,085	44,972	<b>17</b>	92,247	47,290	44,957	<b>64</b>	89,243	43,024	46,219
<b>5</b>	92,500	47,310	45,190	<b>18</b>	91,981	47,278	44,703	<b>65</b>	83,862	40,326	43,536
<b>6</b>	91,728	46,913	44,815	<b>19</b>	92,711	47,485	45,226				
<b>7</b>	92,751	47,400	45,351	<b>20</b>	93,466	47,838	45,628				
<b>8</b>	93,583	47,626	45,957	<b>21</b>	94,616	48,441	46,175				
<b>9</b>	95,307	48,871	46,436	<b>22</b>	96,957	49,544	47,413				
<b>10</b>	94,813	48,671	46,142	<b>23</b>	99,465	50,721	48,744				
<b>11</b>	91,708	47,095	44,613	<b>24</b>	103,086	53,100	49,986				

**Median Age**

Total	Male	Female
38.1	37.2	39.1

**Notes:**

- 1) Unrounded data should not be considered accurate to the last digit.
- 2) Age detail data are provided to develop a variety of age groupings. Single year age values should not be considered reliable.
- 3) Totals may not add due to rounding.

**Population by Age and Sex**  
**Population Estimate for April 1, 2018**  
**State of Washington**

**5-Year Age Groups**

Age	Total	Male	Female
<b>Total</b>	7,427,570	3,706,524	3,721,046
<b>0-4</b>	453,821	232,146	221,675
<b>5-9</b>	470,175	240,190	229,985
<b>10-14</b>	469,215	240,690	228,525
<b>15-19</b>	460,064	235,412	224,652
<b>20-24</b>	488,776	249,668	239,108
<b>25-29</b>	527,800	270,849	256,951
<b>30-34</b>	513,014	262,414	250,600
<b>35-39</b>	508,302	258,457	249,845
<b>40-44</b>	454,121	229,044	225,077
<b>45-49</b>	476,152	240,613	235,539
<b>50-54</b>	463,564	232,078	231,486
<b>55-59</b>	495,160	244,774	250,386
<b>60-64</b>	473,700	229,941	243,759
<b>65-69</b>	406,126	194,835	211,291
<b>70-74</b>	309,866	147,163	162,703
<b>75-79</b>	197,472	92,453	105,019
<b>80-84</b>	125,118	55,500	69,618
<b>85+</b>	135,124	50,297	84,827

**Percentage of Total Population**

Age	Total	Male	Female
<b>Total</b>	100.0000	49.9022	50.0978
<b>0-4</b>	6.1100	3.1255	2.9845
<b>5-9</b>	6.3301	3.2338	3.0964
<b>10-14</b>	6.3172	3.2405	3.0767
<b>15-19</b>	6.1940	3.1694	3.0246
<b>20-24</b>	6.5806	3.3614	3.2192
<b>25-29</b>	7.1060	3.6465	3.4594
<b>30-34</b>	6.9069	3.5330	3.3739
<b>35-39</b>	6.8434	3.4797	3.3638
<b>40-44</b>	6.1140	3.0837	3.0303
<b>45-49</b>	6.4106	3.2395	3.1711
<b>50-54</b>	6.2411	3.1245	3.1166
<b>55-59</b>	6.6665	3.2955	3.3710
<b>60-64</b>	6.3776	3.0958	3.2818
<b>65-69</b>	5.4678	2.6231	2.8447
<b>70-74</b>	4.1718	1.9813	2.1905
<b>75-79</b>	2.6586	1.2447	1.4139
<b>80-84</b>	1.6845	0.7472	0.9373
<b>85+</b>	1.8192	0.6772	1.1421

**Components of Change**

	Total	Male	Female
<b>Births</b>	87,346	44,721	42,625
<b>Deaths</b>	56,372	29,292	27,080
<b>Natural Increase</b>	30,974	15,429	15,545
<b>Net Migration</b>	86,296	43,554	42,742
<b>Total Change</b>	117,270	58,983	58,287

**Components as % of Previous Year's Total Population**

	Total	Male	Female
<b>Births</b>	1.1948	0.6118	0.5831
<b>Deaths</b>	0.7711	0.4007	0.3704
<b>Natural Increase</b>	0.4237	0.2111	0.2126
<b>Net Migration</b>	1.1805	0.5958	0.5847
<b>Total Change</b>	1.6042	0.8068	0.7973

**Age Detail**

Age	Total	Male	Female	Age	Total	Male	Female	Age	Total	Male	Female
<b>0-24</b>	2,342,051	1,198,106	1,143,945	<b>12</b>	92,788	47,664	45,124	<b>60-65</b>	562,626	272,693	289,933
<b>0</b>	86,839	44,437	42,402	<b>13</b>	92,367	47,405	44,962	<b>60</b>	98,051	48,172	49,879
<b>1</b>	89,868	45,970	43,898	<b>14</b>	91,333	46,711	44,622	<b>61</b>	96,071	47,018	49,053
<b>2</b>	91,979	47,046	44,933	<b>15</b>	90,012	45,692	44,320	<b>62</b>	94,740	45,993	48,747
<b>3</b>	92,591	47,358	45,233	<b>16</b>	90,043	46,049	43,994	<b>63</b>	94,389	45,528	48,861
<b>4</b>	92,544	47,335	45,209	<b>17</b>	92,603	47,460	45,143	<b>64</b>	90,449	43,230	47,219
<b>5</b>	93,719	47,934	45,785	<b>18</b>	93,549	47,949	45,600	<b>65</b>	88,926	42,752	46,174
<b>6</b>	94,036	48,095	45,941	<b>19</b>	93,857	48,262	45,595				
<b>7</b>	93,194	47,662	45,532	<b>20</b>	94,696	48,527	46,169				
<b>8</b>	94,208	48,143	46,065	<b>21</b>	95,774	48,974	46,800				
<b>9</b>	95,018	48,356	46,662	<b>22</b>	96,950	49,553	47,397				
<b>10</b>	96,745	49,608	47,137	<b>23</b>	99,371	50,689	48,682				
<b>11</b>	95,982	49,302	46,680	<b>24</b>	101,985	51,925	50,060				

**Median Age**

Total	Male	Female
38.2	37.3	39.1

**Notes:**

- 1) Unrounded data should not be considered accurate to the last digit.
- 2) Age detail data are provided to develop a variety of age groupings. Single year age values should not be considered reliable.
- 3) Totals may not add due to rounding.

**Population by Age and Sex**  
**Population Estimate for April 1, 2019**  
**State of Washington**

<b>5-Year Age Groups</b>				<b>Percentage of Total Population</b>			
<b>Age</b>	<b>Total</b>	<b>Male</b>	<b>Female</b>	<b>Age</b>	<b>Total</b>	<b>Male</b>	<b>Female</b>
<b>Total</b>	7,546,410	3,766,161	3,780,249	<b>Total</b>	100.0000	49.9067	50.0933
<b>0-4</b>	453,002	231,726	221,276	<b>0-4</b>	6.0029	3.0707	2.9322
<b>5-9</b>	475,587	243,198	232,389	<b>5-9</b>	6.3022	3.2227	3.0795
<b>10-14</b>	478,901	245,455	233,446	<b>10-14</b>	6.3461	3.2526	3.0935
<b>15-19</b>	464,088	237,188	226,900	<b>15-19</b>	6.1498	3.1431	3.0067
<b>20-24</b>	492,682	251,882	240,800	<b>20-24</b>	6.5287	3.3378	3.1909
<b>25-29</b>	539,637	276,079	263,558	<b>25-29</b>	7.1509	3.6584	3.4925
<b>30-34</b>	522,495	267,570	254,925	<b>30-34</b>	6.9238	3.5457	3.3781
<b>35-39</b>	521,500	265,531	255,969	<b>35-39</b>	6.9106	3.5186	3.3919
<b>40-44</b>	465,072	234,907	230,165	<b>40-44</b>	6.1628	3.1128	3.0500
<b>45-49</b>	470,575	237,468	233,107	<b>45-49</b>	6.2357	3.1468	3.0890
<b>50-54</b>	461,254	231,593	229,661	<b>50-54</b>	6.1122	3.0689	3.0433
<b>55-59</b>	495,683	245,158	250,525	<b>55-59</b>	6.5685	3.2487	3.3198
<b>60-64</b>	479,171	233,295	245,876	<b>60-64</b>	6.3497	3.0915	3.2582
<b>65-69</b>	419,159	200,248	218,911	<b>65-69</b>	5.5544	2.6536	2.9009
<b>70-74</b>	327,771	155,890	171,881	<b>70-74</b>	4.3434	2.0658	2.2777
<b>75-79</b>	212,119	99,187	112,932	<b>75-79</b>	2.8109	1.3144	1.4965
<b>80-84</b>	130,753	58,275	72,478	<b>80-84</b>	1.7327	0.7722	0.9604
<b>85+</b>	136,961	51,511	85,450	<b>85+</b>	1.8149	0.6826	1.1323

<b>Components of Change</b>			
	<b>Total</b>	<b>Male</b>	<b>Female</b>
<b>Births</b>	85,708	43,882	41,826
<b>Deaths</b>	57,204	29,837	27,367
<b>Natural Increase</b>	28,504	14,045	14,459
<b>Net Migration</b>	90,336	45,592	44,744
<b>Total Change</b>	118,840	59,637	59,203

<b>Components as % of Previous Year's Total Population</b>			
	<b>Total</b>	<b>Male</b>	<b>Female</b>
<b>Births</b>	1.1539	0.5908	0.5631
<b>Deaths</b>	0.7702	0.4017	0.3685
<b>Natural Increase</b>	0.3838	0.1891	0.1947
<b>Net Migration</b>	1.2162	0.6138	0.6024
<b>Total Change</b>	1.6000	0.8029	0.7971

<b>Age Detail</b>											
<b>Age</b>	<b>Total</b>	<b>Male</b>	<b>Female</b>	<b>Age</b>	<b>Total</b>	<b>Male</b>	<b>Female</b>	<b>Age</b>	<b>Total</b>	<b>Male</b>	<b>Female</b>
<b>0-24</b>	2,364,260	1,209,449	1,154,811	<b>12</b>	97,150	49,918	47,232	<b>60-65</b>	569,333	276,268	293,065
<b>0</b>	85,217	43,607	41,610	<b>13</b>	93,858	48,213	45,645	<b>60</b>	96,765	47,483	49,282
<b>1</b>	87,598	44,810	42,788	<b>14</b>	93,417	47,943	45,474	<b>61</b>	97,881	47,976	49,905
<b>2</b>	91,778	46,943	44,835	<b>15</b>	92,351	47,229	45,122	<b>62</b>	95,875	46,802	49,073
<b>3</b>	93,929	48,043	45,886	<b>16</b>	91,091	46,235	44,856	<b>63</b>	94,520	45,761	48,759
<b>4</b>	94,480	48,323	46,157	<b>17</b>	91,173	46,600	44,573	<b>64</b>	94,130	45,273	48,857
<b>5</b>	94,269	48,216	46,053	<b>18</b>	93,954	48,145	45,809	<b>65</b>	90,162	42,973	47,189
<b>6</b>	95,327	48,756	46,571	<b>19</b>	95,519	48,979	46,540				
<b>7</b>	95,588	48,888	46,700	<b>20</b>	95,933	49,356	46,577				
<b>8</b>	94,705	48,434	46,271	<b>21</b>	97,111	49,717	47,394				
<b>9</b>	95,698	48,904	46,794	<b>22</b>	98,217	50,137	48,080				
<b>10</b>	96,499	49,109	47,390	<b>23</b>	99,446	50,738	48,708				
<b>11</b>	97,977	50,272	47,705	<b>24</b>	101,975	51,934	50,041				

<b>Median Age</b>		
<b>Total</b>	<b>Male</b>	<b>Female</b>
38.3	37.4	39.2

**Notes:**

- 1) Unrounded data should not be considered accurate to the last digit.
- 2) Age detail data are provided to develop a variety of age groupings. Single year age values should not be considered reliable.
- 3) Totals may not add due to rounding.

**Population by Age and Sex**  
**Population Estimate for April 1, 2020**  
**State of Washington**

<b>5-Year Age Groups</b>				<b>Percentage of Total Population</b>			
<b>Age</b>	<b>Total</b>	<b>Male</b>	<b>Female</b>	<b>Age</b>	<b>Total</b>	<b>Male</b>	<b>Female</b>
<b>Total</b>	7,656,200	3,821,095	3,835,105	<b>Total</b>	100.0000	49.9085	50.0915
<b>0-4</b>	449,128	229,746	219,382	<b>0-4</b>	5.8662	3.0008	2.8654
<b>5-9</b>	481,674	246,349	235,325	<b>5-9</b>	6.2913	3.2176	3.0737
<b>10-14</b>	486,751	249,309	237,442	<b>10-14</b>	6.3576	3.2563	3.1013
<b>15-19</b>	468,008	239,208	228,800	<b>15-19</b>	6.1128	3.1244	2.9884
<b>20-24</b>	497,313	254,337	242,976	<b>20-24</b>	6.4956	3.3220	3.1736
<b>25-29</b>	545,212	277,945	267,267	<b>25-29</b>	7.1212	3.6303	3.4909
<b>30-34</b>	533,157	273,655	259,502	<b>30-34</b>	6.9637	3.5743	3.3894
<b>35-39</b>	528,661	269,124	259,537	<b>35-39</b>	6.9050	3.5151	3.3899
<b>40-44</b>	479,357	242,554	236,803	<b>40-44</b>	6.2610	3.1681	3.0930
<b>45-49</b>	463,169	233,521	229,648	<b>45-49</b>	6.0496	3.0501	2.9995
<b>50-54</b>	466,834	234,922	231,912	<b>50-54</b>	6.0975	3.0684	3.0291
<b>55-59</b>	491,415	243,253	248,162	<b>55-59</b>	6.4185	3.1772	3.2413
<b>60-64</b>	484,083	236,302	247,781	<b>60-64</b>	6.3228	3.0864	3.2363
<b>65-69</b>	432,664	206,459	226,205	<b>65-69</b>	5.6512	2.6966	2.9545
<b>70-74</b>	347,178	165,014	182,164	<b>70-74</b>	4.5346	2.1553	2.3793
<b>75-79</b>	225,610	105,296	120,314	<b>75-79</b>	2.9468	1.3753	1.5715
<b>80-84</b>	136,147	61,033	75,114	<b>80-84</b>	1.7783	0.7972	0.9811
<b>85+</b>	139,839	53,068	86,771	<b>85+</b>	1.8265	0.6931	1.1333

<b>Components of Change</b>			
	<b>Total</b>	<b>Male</b>	<b>Female</b>
<b>Births</b>	85,231	43,638	41,593
<b>Deaths</b>	59,104	30,921	28,183
<b>Natural Increase</b>	26,127	12,717	13,410
<b>Net Migration</b>	83,663	42,217	41,446
<b>Total Change</b>	109,790	54,934	54,856

<b>Components as % of Previous Year's Total Population</b>			
	<b>Total</b>	<b>Male</b>	<b>Female</b>
<b>Births</b>	1.1294	0.5783	0.5512
<b>Deaths</b>	0.7832	0.4097	0.3735
<b>Natural Increase</b>	0.3462	0.1685	0.1777
<b>Net Migration</b>	1.1086	0.5594	0.5492
<b>Total Change</b>	1.4549	0.7279	0.7269

<b>Age Detail</b>											
<b>Age</b>	<b>Total</b>	<b>Male</b>	<b>Female</b>	<b>Age</b>	<b>Total</b>	<b>Male</b>	<b>Female</b>	<b>Age</b>	<b>Total</b>	<b>Male</b>	<b>Female</b>
<b>0-24</b>	2,382,874	1,218,949	1,163,925	<b>12</b>	99,065	50,844	48,221	<b>60-65</b>	577,851	281,277	296,574
<b>0</b>	84,741	43,364	41,377	<b>13</b>	98,172	50,443	47,729	<b>60</b>	100,124	49,289	50,835
<b>1</b>	85,860	43,920	41,940	<b>14</b>	94,833	48,713	46,120	<b>61</b>	96,543	47,264	49,279
<b>2</b>	89,294	45,674	43,620	<b>15</b>	94,368	48,428	45,940	<b>62</b>	97,624	47,730	49,894
<b>3</b>	93,554	47,851	45,703	<b>16</b>	93,361	47,741	45,620	<b>63</b>	95,592	46,540	49,052
<b>4</b>	95,679	48,937	46,742	<b>17</b>	92,133	46,738	45,395	<b>64</b>	94,200	45,479	48,721
<b>5</b>	96,087	49,143	46,944	<b>18</b>	92,387	47,213	45,174	<b>65</b>	93,768	44,975	48,793
<b>6</b>	95,746	48,971	46,775	<b>19</b>	95,759	49,088	46,671				
<b>7</b>	96,764	49,490	47,274	<b>20</b>	97,446	49,991	47,455				
<b>8</b>	97,003	49,611	47,392	<b>21</b>	98,162	50,458	47,704				
<b>9</b>	96,074	49,134	46,940	<b>22</b>	99,366	50,791	48,575				
<b>10</b>	97,061	49,600	47,461	<b>23</b>	100,519	51,226	49,293				
<b>11</b>	97,620	49,709	47,911	<b>24</b>	101,820	51,871	49,949				

<b>Median Age</b>		
<b>Total</b>	<b>Male</b>	<b>Female</b>
38.5	37.6	39.4

**Notes:**

- 1) Unrounded data should not be considered accurate to the last digit.
- 2) Age detail data are provided to develop a variety of age groupings. Single year age values should not be considered reliable.
- 3) Totals may not add due to rounding.



**Population by Age and Sex  
Population Forecast for April 1, 2021  
State of Washington**

<b>5-Year Age Groups</b>				<b>Percentage of Total Population</b>			
<b>Age</b>	<b>Total</b>	<b>Male</b>	<b>Female</b>	<b>Age</b>	<b>Total</b>	<b>Male</b>	<b>Female</b>
<b>Total</b>	7,714,660	3,849,817	3,864,843	<b>Total</b>	100.0000	49.9026	50.0974
<b>0-4</b>	440,574	225,368	215,206	<b>0-4</b>	5.7109	2.9213	2.7896
<b>5-9</b>	484,212	247,648	236,564	<b>5-9</b>	6.2765	3.2101	3.0664
<b>10-14</b>	490,229	250,891	239,338	<b>10-14</b>	6.3545	3.2521	3.1024
<b>15-19</b>	469,418	239,999	229,419	<b>15-19</b>	6.0848	3.1109	2.9738
<b>20-24</b>	495,534	253,589	241,945	<b>20-24</b>	6.4233	3.2871	3.1362
<b>25-29</b>	540,614	275,655	264,959	<b>25-29</b>	7.0076	3.5731	3.4345
<b>30-34</b>	540,592	277,070	263,522	<b>30-34</b>	7.0073	3.5915	3.4159
<b>35-39</b>	532,807	271,682	261,125	<b>35-39</b>	6.9064	3.5216	3.3848
<b>40-44</b>	493,254	249,594	243,660	<b>40-44</b>	6.3937	3.2353	3.1584
<b>45-49</b>	453,423	228,348	225,075	<b>45-49</b>	5.8774	2.9599	2.9175
<b>50-54</b>	476,302	239,961	236,341	<b>50-54</b>	6.1740	3.1105	3.0635
<b>55-59</b>	479,808	238,106	241,702	<b>55-59</b>	6.2194	3.0864	3.1330
<b>60-64</b>	486,819	237,828	248,991	<b>60-64</b>	6.3103	3.0828	3.2275
<b>65-69</b>	443,703	211,902	231,801	<b>65-69</b>	5.7514	2.7467	3.0047
<b>70-74</b>	366,918	173,892	193,026	<b>70-74</b>	4.7561	2.2540	2.5021
<b>75-79</b>	235,484	109,708	125,776	<b>75-79</b>	3.0524	1.4221	1.6304
<b>80-84</b>	142,426	64,039	78,387	<b>80-84</b>	1.8462	0.8301	1.0161
<b>85+</b>	142,543	54,537	88,006	<b>85+</b>	1.8477	0.7069	1.1408

<b>Components of Change</b>			
	<b>Total</b>	<b>Male</b>	<b>Female</b>
<b>Births</b>	85,632	43,843	41,789
<b>Deaths</b>	61,103	32,241	28,862
<b>Natural Increase</b>	24,529	11,602	12,927
<b>Net Migration</b>	33,931	17,120	16,811
<b>Total Change</b>	58,460	28,722	29,738

<b>Components as % of Previous Year's Total Population</b>			
	<b>Total</b>	<b>Male</b>	<b>Female</b>
<b>Births</b>	1.1185	0.5726	0.5458
<b>Deaths</b>	0.7981	0.4211	0.3770
<b>Natural Increase</b>	0.3204	0.1515	0.1688
<b>Net Migration</b>	0.4432	0.2236	0.2196
<b>Total Change</b>	0.7636	0.3751	0.3884

<b>Age Detail</b>											
<b>Age</b>	<b>Total</b>	<b>Male</b>	<b>Female</b>	<b>Age</b>	<b>Total</b>	<b>Male</b>	<b>Female</b>	<b>Age</b>	<b>Total</b>	<b>Male</b>	<b>Female</b>
<b>0-24</b>	2,379,967	1,217,495	1,162,472	<b>12</b>	98,052	49,935	48,117	<b>60-65</b>	580,280	282,835	297,445
<b>0</b>	85,138	43,565	41,573	<b>13</b>	99,477	51,055	48,422	<b>60</b>	99,428	48,663	50,765
<b>1</b>	84,745	43,349	41,396	<b>14</b>	98,573	50,648	47,925	<b>61</b>	99,558	48,906	50,652
<b>2</b>	86,480	44,233	42,247	<b>15</b>	95,209	48,903	46,306	<b>62</b>	95,952	46,868	49,084
<b>3</b>	89,970	46,019	43,951	<b>16</b>	94,766	48,628	46,138	<b>63</b>	96,977	47,301	49,676
<b>4</b>	94,241	48,202	46,039	<b>17</b>	93,771	47,937	45,834	<b>64</b>	94,904	46,090	48,814
<b>5</b>	96,322	49,264	47,058	<b>18</b>	92,602	46,968	45,634	<b>65</b>	93,461	45,007	48,454
<b>6</b>	96,682	49,447	47,235	<b>19</b>	93,070	47,563	45,507				
<b>7</b>	96,317	49,262	47,055	<b>20</b>	96,500	49,470	47,030				
<b>8</b>	97,332	49,780	47,552	<b>21</b>	98,318	50,412	47,906				
<b>9</b>	97,559	49,895	47,664	<b>22</b>	99,035	50,863	48,172				
<b>10</b>	96,618	49,412	47,206	<b>23</b>	100,252	51,198	49,054				
<b>11</b>	97,509	49,841	47,668	<b>24</b>	101,429	51,646	49,783				

<b>Median Age</b>		
<b>Total</b>	<b>Male</b>	<b>Female</b>
38.7	37.8	39.6

**Notes:**

- 1) Unrounded data should not be considered accurate to the last digit.
- 2) Age detail data are provided to develop a variety of age groupings. Single year age values should not be considered reliable.
- 3) Totals may not add due to rounding.

**Population by Age and Sex  
Population Forecast for April 1, 2022  
State of Washington**

**5-Year Age Groups**

Age	Total	Male	Female
<b>Total</b>	7,776,083	3,879,941	3,896,142
<b>0-4</b>	434,271	222,142	212,129
<b>5-9</b>	483,955	247,515	236,440
<b>10-14</b>	491,561	251,355	240,206
<b>15-19</b>	477,409	244,327	233,082
<b>20-24</b>	491,633	251,634	239,999
<b>25-29</b>	534,153	272,025	262,128
<b>30-34</b>	552,006	282,578	269,428
<b>35-39</b>	533,050	272,266	260,784
<b>40-44</b>	507,123	256,946	250,177
<b>45-49</b>	452,924	227,994	224,930
<b>50-54</b>	479,924	241,965	237,959
<b>55-59</b>	469,355	233,104	236,251
<b>60-64</b>	486,969	238,171	248,798
<b>65-69</b>	452,925	216,629	236,296
<b>70-74</b>	372,805	176,298	196,507
<b>75-79</b>	258,751	120,439	138,312
<b>80-84</b>	150,866	68,130	82,736
<b>85+</b>	146,403	56,423	89,980

**Percentage of Total Population**

Age	Total	Male	Female
<b>Total</b>	100.0000	49.8958	50.1042
<b>0-4</b>	5.5847	2.8567	2.7280
<b>5-9</b>	6.2236	3.1830	3.0406
<b>10-14</b>	6.3214	3.2324	3.0890
<b>15-19</b>	6.1395	3.1420	2.9974
<b>20-24</b>	6.3224	3.2360	3.0864
<b>25-29</b>	6.8692	3.4982	3.3710
<b>30-34</b>	7.0988	3.6339	3.4648
<b>35-39</b>	6.8550	3.5013	3.3537
<b>40-44</b>	6.5216	3.3043	3.2173
<b>45-49</b>	5.8246	2.9320	2.8926
<b>50-54</b>	6.1718	3.1117	3.0601
<b>55-59</b>	6.0359	2.9977	3.0382
<b>60-64</b>	6.2624	3.0629	3.1995
<b>65-69</b>	5.8246	2.7858	3.0388
<b>70-74</b>	4.7943	2.2672	2.5271
<b>75-79</b>	3.3275	1.5488	1.7787
<b>80-84</b>	1.9401	0.8761	1.0640
<b>85+</b>	1.8827	0.7256	1.1571

**Components of Change**

	Total	Male	Female
<b>Births</b>	86,358	44,215	42,143
<b>Deaths</b>	60,388	31,979	28,409
<b>Natural Increase</b>	25,970	12,236	13,734
<b>Net Migration</b>	35,453	17,888	17,565
<b>Total Change</b>	61,423	30,124	31,299

**Components as % of Previous Year's Total Population**

	Total	Male	Female
<b>Births</b>	1.1194	0.5731	0.5463
<b>Deaths</b>	0.7828	0.4145	0.3682
<b>Natural Increase</b>	0.3366	0.1586	0.1780
<b>Net Migration</b>	0.4596	0.2319	0.2277
<b>Total Change</b>	0.7962	0.3905	0.4057

**Age Detail**

Age	Total	Male	Female	Age	Total	Male	Female	Age	Total	Male	Female
<b>0-24</b>	2,378,829	1,216,973	1,161,856	<b>12</b>	97,959	50,077	47,882	<b>60-65</b>	581,177	283,810	297,367
<b>0</b>	85,879	43,945	41,934	<b>13</b>	98,479	50,152	48,327	<b>60</b>	97,387	48,005	49,382
<b>1</b>	85,178	43,569	41,609	<b>14</b>	99,903	51,273	48,630	<b>61</b>	98,906	48,306	50,600
<b>2</b>	85,389	43,674	41,715	<b>15</b>	98,982	50,855	48,127	<b>62</b>	98,990	48,519	50,471
<b>3</b>	87,165	44,583	42,582	<b>16</b>	95,630	49,115	46,515	<b>63</b>	95,361	46,471	48,890
<b>4</b>	90,660	46,371	44,289	<b>17</b>	95,203	48,837	46,366	<b>64</b>	96,325	46,870	49,455
<b>5</b>	94,903	48,539	46,364	<b>18</b>	94,272	48,185	46,087	<b>65</b>	94,208	45,639	48,569
<b>6</b>	96,945	49,581	47,364	<b>19</b>	93,322	47,335	45,987				
<b>7</b>	97,284	49,754	47,530	<b>20</b>	93,826	47,953	45,873				
<b>8</b>	96,908	49,563	47,345	<b>21</b>	97,405	49,908	47,497				
<b>9</b>	97,915	50,078	47,837	<b>22</b>	99,233	50,838	48,395				
<b>10</b>	98,135	50,189	47,946	<b>23</b>	99,962	51,293	48,669				
<b>11</b>	97,085	49,664	47,421	<b>24</b>	101,207	51,642	49,565				

**Median Age**

Total	Male	Female
39.0	38.1	39.9

**Notes:**

- 1) Unrounded data should not be considered accurate to the last digit.
- 2) Age detail data are provided to develop a variety of age groupings. Single year age values should not be considered reliable.
- 3) Totals may not add due to rounding.

**Population by Age and Sex  
Population Forecast for April 1, 2023  
State of Washington**

**5-Year Age Groups**

Age	Total	Male	Female
<b>Total</b>	7,839,659	3,911,120	3,928,539
<b>0-4</b>	432,226	221,094	211,132
<b>5-9</b>	479,972	245,477	234,495
<b>10-14</b>	492,108	251,475	240,633
<b>15-19</b>	486,732	249,642	237,090
<b>20-24</b>	488,549	249,621	238,928
<b>25-29</b>	527,695	268,259	259,436
<b>30-34</b>	562,503	288,030	274,473
<b>35-39</b>	533,927	272,893	261,034
<b>40-44</b>	519,672	263,958	255,714
<b>45-49</b>	459,360	231,263	228,097
<b>50-54</b>	477,402	240,405	236,997
<b>55-59</b>	460,308	229,014	231,294
<b>60-64</b>	486,409	238,042	248,367
<b>65-69</b>	459,033	219,997	239,036
<b>70-74</b>	381,796	180,474	201,322
<b>75-79</b>	277,386	128,830	148,556
<b>80-84</b>	163,073	73,720	89,353
<b>85+</b>	151,508	58,926	92,582

**Percentage of Total Population**

Age	Total	Male	Female
<b>Total</b>	100.0000	49.8889	50.1111
<b>0-4</b>	5.5133	2.8202	2.6931
<b>5-9</b>	6.1224	3.1312	2.9911
<b>10-14</b>	6.2772	3.2077	3.0694
<b>15-19</b>	6.2086	3.1843	3.0242
<b>20-24</b>	6.2318	3.1841	3.0477
<b>25-29</b>	6.7311	3.4218	3.3093
<b>30-34</b>	7.1751	3.6740	3.5011
<b>35-39</b>	6.8106	3.4809	3.3297
<b>40-44</b>	6.6288	3.3670	3.2618
<b>45-49</b>	5.8594	2.9499	2.9095
<b>50-54</b>	6.0896	3.0665	3.0231
<b>55-59</b>	5.8715	2.9212	2.9503
<b>60-64</b>	6.2045	3.0364	3.1681
<b>65-69</b>	5.8553	2.8062	3.0491
<b>70-74</b>	4.8701	2.3021	2.5680
<b>75-79</b>	3.5382	1.6433	1.8949
<b>80-84</b>	2.0801	0.9403	1.1398
<b>85+</b>	1.9326	0.7516	1.1809

**Components of Change**

	Total	Male	Female
<b>Births</b>	86,858	44,471	42,387
<b>Deaths</b>	61,547	32,599	28,948
<b>Natural Increase</b>	25,311	11,872	13,439
<b>Net Migration</b>	38,265	19,307	18,958
<b>Total Change</b>	63,576	31,179	32,397

**Components as % of Previous Year's Total Population**

	Total	Male	Female
<b>Births</b>	1.1170	0.5719	0.5451
<b>Deaths</b>	0.7915	0.4192	0.3723
<b>Natural Increase</b>	0.3255	0.1527	0.1728
<b>Net Migration</b>	0.4921	0.2483	0.2438
<b>Total Change</b>	0.8176	0.4010	0.4166

**Age Detail**

Age	Total	Male	Female	Age	Total	Male	Female	Age	Total	Male	Female
<b>0-24</b>	2,379,587	1,217,309	1,162,278	<b>12</b>	97,569	49,918	47,651	<b>60-65</b>	582,058	284,469	297,589
<b>0</b>	86,381	44,202	42,179	<b>13</b>	98,420	50,312	48,108	<b>60</b>	97,981	48,254	49,727
<b>1</b>	85,956	43,968	41,988	<b>14</b>	98,934	50,383	48,551	<b>61</b>	96,901	47,666	49,235
<b>2</b>	85,882	43,925	41,957	<b>15</b>	100,351	51,500	48,851	<b>62</b>	98,370	47,938	50,432
<b>3</b>	86,120	44,047	42,073	<b>16</b>	99,456	51,094	48,362	<b>63</b>	98,407	48,122	50,285
<b>4</b>	87,887	44,952	42,935	<b>17</b>	96,107	49,344	46,763	<b>64</b>	94,750	46,062	48,688
<b>5</b>	91,347	46,721	44,626	<b>18</b>	95,753	49,111	46,642	<b>65</b>	95,649	46,427	49,222
<b>6</b>	95,567	48,878	46,689	<b>19</b>	95,065	48,593	46,472				
<b>7</b>	97,596	49,913	47,683	<b>20</b>	94,143	47,756	46,387				
<b>8</b>	97,928	50,082	47,846	<b>21</b>	94,780	48,414	46,366				
<b>9</b>	97,534	49,883	47,651	<b>22</b>	98,390	50,367	48,023				
<b>10</b>	98,539	50,397	48,142	<b>23</b>	100,241	51,306	48,935				
<b>11</b>	98,646	50,465	48,181	<b>24</b>	100,995	51,778	49,217				

**Median Age**

Total	Male	Female
39.2	38.3	40.1

**Notes:**

- 1) Unrounded data should not be considered accurate to the last digit.
- 2) Age detail data are provided to develop a variety of age groupings. Single year age values should not be considered reliable.
- 3) Totals may not add due to rounding.

**Population by Age and Sex  
Population Forecast for April 1, 2024  
State of Washington**

**5-Year Age Groups**

Age	Total	Male	Female
<b>Total</b>	7,904,355	3,942,835	3,961,520
<b>0-4</b>	433,505	221,748	211,757
<b>5-9</b>	473,712	242,274	231,438
<b>10-14</b>	493,373	252,358	241,015
<b>15-19</b>	493,529	252,905	240,624
<b>20-24</b>	487,659	248,847	238,812
<b>25-29</b>	524,030	266,797	257,233
<b>30-34</b>	567,558	289,795	277,763
<b>35-39</b>	538,987	275,757	263,230
<b>40-44</b>	530,164	269,633	260,531
<b>45-49</b>	468,529	236,201	232,328
<b>50-54</b>	470,151	236,411	233,740
<b>55-59</b>	456,618	227,861	228,757
<b>60-64</b>	485,474	237,743	247,731
<b>65-69</b>	462,763	222,537	240,226
<b>70-74</b>	393,036	184,970	208,066
<b>75-79</b>	293,071	136,311	156,760
<b>80-84</b>	175,274	79,139	96,135
<b>85+</b>	156,922	61,548	95,374

**Percentage of Total Population**

Age	Total	Male	Female
<b>Total</b>	100.0000	49.8818	50.1182
<b>0-4</b>	5.4844	2.8054	2.6790
<b>5-9</b>	5.9931	3.0651	2.9280
<b>10-14</b>	6.2418	3.1926	3.0491
<b>15-19</b>	6.2438	3.1996	3.0442
<b>20-24</b>	6.1695	3.1482	3.0213
<b>25-29</b>	6.6296	3.3753	3.2543
<b>30-34</b>	7.1803	3.6663	3.5141
<b>35-39</b>	6.8189	3.4887	3.3302
<b>40-44</b>	6.7072	3.4112	3.2960
<b>45-49</b>	5.9275	2.9882	2.9392
<b>50-54</b>	5.9480	2.9909	2.9571
<b>55-59</b>	5.7768	2.8827	2.8941
<b>60-64</b>	6.1419	3.0077	3.1341
<b>65-69</b>	5.8545	2.8154	3.0392
<b>70-74</b>	4.9724	2.3401	2.6323
<b>75-79</b>	3.7077	1.7245	1.9832
<b>80-84</b>	2.2174	1.0012	1.2162
<b>85+</b>	1.9853	0.7787	1.2066

**Components of Change**

	Total	Male	Female
<b>Births</b>	87,261	44,677	42,584
<b>Deaths</b>	62,815	33,275	29,540
<b>Natural Increase</b>	24,446	11,402	13,044
<b>Net Migration</b>	40,250	20,313	19,937
<b>Total Change</b>	64,696	31,715	32,981

**Components as % of Previous Year's Total Population**

	Total	Male	Female
<b>Births</b>	1.1131	0.5699	0.5432
<b>Deaths</b>	0.8012	0.4244	0.3768
<b>Natural Increase</b>	0.3118	0.1454	0.1664
<b>Net Migration</b>	0.5134	0.2591	0.2543
<b>Total Change</b>	0.8252	0.4045	0.4207

**Age Detail**

Age	Total	Male	Female	Age	Total	Male	Female	Age	Total	Male	Female
<b>0-24</b>	2,381,778	1,218,132	1,163,646	<b>12</b>	99,162	50,736	48,426	<b>60-65</b>	579,584	283,383	296,201
<b>0</b>	86,787	44,410	42,377	<b>13</b>	98,051	50,164	47,887	<b>60</b>	95,951	47,237	48,714
<b>1</b>	86,488	44,241	42,247	<b>14</b>	98,897	50,555	48,342	<b>61</b>	97,512	47,924	49,588
<b>2</b>	86,706	44,348	42,358	<b>15</b>	99,401	50,618	48,783	<b>62</b>	96,396	47,314	49,082
<b>3</b>	86,654	44,319	42,335	<b>16</b>	100,858	51,756	49,102	<b>63</b>	97,816	47,558	50,258
<b>4</b>	86,870	44,430	42,440	<b>17</b>	99,978	51,346	48,632	<b>64</b>	97,799	47,710	50,089
<b>5</b>	88,587	45,309	43,278	<b>18</b>	96,692	49,636	47,056	<b>65</b>	94,110	45,640	48,470
<b>6</b>	92,018	47,064	44,954	<b>19</b>	96,600	49,549	47,051				
<b>7</b>	96,241	49,222	47,019	<b>20</b>	95,946	49,049	46,897				
<b>8</b>	98,274	50,258	48,016	<b>21</b>	95,149	48,239	46,910				
<b>9</b>	98,592	50,421	48,171	<b>22</b>	95,789	48,884	46,905				
<b>10</b>	98,186	50,216	47,970	<b>23</b>	99,442	50,856	48,586				
<b>11</b>	99,077	50,687	48,390	<b>24</b>	101,333	51,819	49,514				

**Median Age**

Total	Male	Female
39.4	38.6	40.4

**Notes:**

- 1) Unrounded data should not be considered accurate to the last digit.
- 2) Age detail data are provided to develop a variety of age groupings. Single year age values should not be considered reliable.
- 3) Totals may not add due to rounding.

**Population by Age and Sex  
Population Forecast for April 1, 2025  
State of Washington**

**5-Year Age Groups**

Age	Total	Male	Female
<b>Total</b>	7,969,840	3,974,926	3,994,914
<b>0-4</b>	436,236	223,146	213,090
<b>5-9</b>	465,459	238,053	227,406
<b>10-14</b>	495,861	253,674	242,187
<b>15-19</b>	498,919	255,467	243,452
<b>20-24</b>	488,197	249,104	239,093
<b>25-29</b>	522,604	266,311	256,293
<b>30-34</b>	566,910	288,505	278,405
<b>35-39</b>	545,639	279,779	265,860
<b>40-44</b>	534,828	271,923	262,905
<b>45-49</b>	481,319	243,078	238,241
<b>50-54</b>	461,484	231,842	229,642
<b>55-59</b>	461,060	230,624	230,436
<b>60-64</b>	480,229	235,412	244,817
<b>65-69</b>	466,419	224,974	241,445
<b>70-74</b>	404,904	190,328	214,576
<b>75-79</b>	310,153	144,154	165,999
<b>80-84</b>	186,537	84,070	102,467
<b>85+</b>	163,082	64,482	98,600

**Percentage of Total Population**

Age	Total	Male	Female
<b>Total</b>	100.0000	49.8746	50.1254
<b>0-4</b>	5.4736	2.7999	2.6737
<b>5-9</b>	5.8403	2.9869	2.8533
<b>10-14</b>	6.2217	3.1829	3.0388
<b>15-19</b>	6.2601	3.2054	3.0547
<b>20-24</b>	6.1256	3.1256	3.0000
<b>25-29</b>	6.5573	3.3415	3.2158
<b>30-34</b>	7.1132	3.6200	3.4932
<b>35-39</b>	6.8463	3.5105	3.3358
<b>40-44</b>	6.7106	3.4119	3.2987
<b>45-49</b>	6.0393	3.0500	2.9893
<b>50-54</b>	5.7904	2.9090	2.8814
<b>55-59</b>	5.7851	2.8937	2.8914
<b>60-64</b>	6.0256	2.9538	3.0718
<b>65-69</b>	5.8523	2.8228	3.0295
<b>70-74</b>	5.0805	2.3881	2.6924
<b>75-79</b>	3.8916	1.8087	2.0828
<b>80-84</b>	2.3405	1.0549	1.2857
<b>85+</b>	2.0462	0.8091	1.2372

**Components of Change**

	Total	Male	Female
<b>Births</b>	87,548	44,824	42,724
<b>Deaths</b>	64,133	33,965	30,168
<b>Natural Increase</b>	23,415	10,859	12,556
<b>Net Migration</b>	42,070	21,232	20,838
<b>Total Change</b>	65,485	32,091	33,394

**Components as % of Previous Year's Total Population**

	Total	Male	Female
<b>Births</b>	1.1076	0.5671	0.5405
<b>Deaths</b>	0.8114	0.4297	0.3817
<b>Natural Increase</b>	0.2962	0.1374	0.1588
<b>Net Migration</b>	0.5322	0.2686	0.2636
<b>Total Change</b>	0.8285	0.4060	0.4225

**Age Detail**

Age	Total	Male	Female	Age	Total	Male	Female	Age	Total	Male	Female
<b>0-24</b>	2,384,672	1,219,444	1,165,228	<b>12</b>	99,617	50,971	48,646	<b>60-65</b>	577,391	282,697	294,694
<b>0</b>	87,078	44,559	42,519	<b>13</b>	99,673	50,997	48,676	<b>60</b>	94,586	46,793	47,793
<b>1</b>	86,920	44,462	42,458	<b>14</b>	98,547	50,417	48,130	<b>61</b>	95,511	46,925	48,586
<b>2</b>	87,277	44,641	42,636	<b>15</b>	99,384	50,801	48,583	<b>62</b>	97,024	47,581	49,443
<b>3</b>	87,519	44,763	42,756	<b>16</b>	99,924	50,880	49,044	<b>63</b>	95,872	46,950	48,922
<b>4</b>	87,442	44,721	42,721	<b>17</b>	101,411	52,023	49,388	<b>64</b>	97,236	47,163	50,073
<b>5</b>	87,592	44,798	42,794	<b>18</b>	100,614	51,664	48,950	<b>65</b>	97,162	47,285	49,877
<b>6</b>	89,265	45,655	43,610	<b>19</b>	97,586	50,099	47,487				
<b>7</b>	92,695	47,410	45,285	<b>20</b>	97,535	50,035	47,500				
<b>8</b>	96,938	49,577	47,361	<b>21</b>	97,018	49,569	47,449				
<b>9</b>	98,969	50,613	48,356	<b>22</b>	96,209	48,730	47,479				
<b>10</b>	99,279	50,772	48,507	<b>23</b>	96,861	49,382	47,479				
<b>11</b>	98,745	50,517	48,228	<b>24</b>	100,574	51,388	49,186				

**Median Age**

Total	Male	Female
39.7	38.8	40.6

**Notes:**

- 1) Unrounded data should not be considered accurate to the last digit.
- 2) Age detail data are provided to develop a variety of age groupings. Single year age values should not be considered reliable.
- 3) Totals may not add due to rounding.

**Population by Age and Sex  
Population Forecast for April 1, 2026  
State of Washington**

**5-Year Age Groups**

Age	Total	Male	Female
<b>Total</b>	8,036,167	4,007,437	4,028,730
<b>0-4</b>	439,130	224,631	214,499
<b>5-9</b>	457,466	233,964	223,502
<b>10-14</b>	499,197	255,383	243,814
<b>15-19</b>	503,130	257,422	245,708
<b>20-24</b>	490,705	250,454	240,251
<b>25-29</b>	522,124	266,219	255,905
<b>30-34</b>	563,343	286,752	276,591
<b>35-39</b>	554,109	283,721	270,388
<b>40-44</b>	539,567	274,793	264,774
<b>45-49</b>	495,707	250,365	245,342
<b>50-54</b>	452,207	226,944	225,263
<b>55-59</b>	470,883	235,831	235,052
<b>60-64</b>	469,404	230,716	238,688
<b>65-69</b>	469,759	226,803	242,956
<b>70-74</b>	415,925	195,733	220,192
<b>75-79</b>	328,201	152,121	176,080
<b>80-84</b>	195,140	87,820	107,320
<b>85+</b>	170,170	67,765	102,405

**Percentage of Total Population**

Age	Total	Male	Female
<b>Total</b>	100.0000	49.8675	50.1325
<b>0-4</b>	5.4644	2.7953	2.6692
<b>5-9</b>	5.6926	2.9114	2.7812
<b>10-14</b>	6.2119	3.1779	3.0340
<b>15-19</b>	6.2608	3.2033	3.0575
<b>20-24</b>	6.1062	3.1166	2.9896
<b>25-29</b>	6.4972	3.3128	3.1844
<b>30-34</b>	7.0101	3.5683	3.4418
<b>35-39</b>	6.8952	3.5306	3.3646
<b>40-44</b>	6.7142	3.4195	3.2948
<b>45-49</b>	6.1685	3.1155	3.0530
<b>50-54</b>	5.6271	2.8240	2.8031
<b>55-59</b>	5.8595	2.9346	2.9249
<b>60-64</b>	5.8411	2.8710	2.9702
<b>65-69</b>	5.8456	2.8223	3.0233
<b>70-74</b>	5.1757	2.4357	2.7400
<b>75-79</b>	4.0840	1.8930	2.1911
<b>80-84</b>	2.4283	1.0928	1.3355
<b>85+</b>	2.1176	0.8433	1.2743

**Components of Change**

	Total	Male	Female
<b>Births</b>	88,145	45,130	43,015
<b>Deaths</b>	65,533	34,686	30,847
<b>Natural Increase</b>	22,612	10,444	12,168
<b>Net Migration</b>	43,715	22,067	21,648
<b>Total Change</b>	66,327	32,511	33,816

**Components as % of Previous Year's Total Population**

	Total	Male	Female
<b>Births</b>	1.1060	0.5663	0.5397
<b>Deaths</b>	0.8223	0.4352	0.3870
<b>Natural Increase</b>	0.2837	0.1310	0.1527
<b>Net Migration</b>	0.5485	0.2769	0.2716
<b>Total Change</b>	0.8322	0.4079	0.4243

**Age Detail**

Age	Total	Male	Female	Age	Total	Male	Female	Age	Total	Male	Female
<b>0-24</b>	2,389,628	1,221,854	1,167,774	<b>12</b>	99,303	50,810	48,493	<b>60-65</b>	566,030	277,471	288,559
<b>0</b>	87,678	44,867	42,811	<b>13</b>	100,149	51,243	48,906	<b>60</b>	88,348	43,829	44,519
<b>1</b>	87,236	44,624	42,612	<b>14</b>	100,196	51,264	48,932	<b>61</b>	94,168	46,493	47,675
<b>2</b>	87,744	44,880	42,864	<b>15</b>	99,051	50,672	48,379	<b>62</b>	95,050	46,598	48,452
<b>3</b>	88,128	45,076	43,052	<b>16</b>	99,926	51,074	48,852	<b>63</b>	96,516	47,225	49,291
<b>4</b>	88,344	45,184	43,160	<b>17</b>	100,493	51,153	49,340	<b>64</b>	95,322	46,571	48,751
<b>5</b>	88,194	45,104	43,090	<b>18</b>	102,081	52,358	49,723	<b>65</b>	96,626	46,755	49,871
<b>6</b>	88,287	45,153	43,134	<b>19</b>	101,579	52,165	49,414				
<b>7</b>	89,947	46,003	43,944	<b>20</b>	98,566	50,610	47,956				
<b>8</b>	93,390	47,764	45,626	<b>21</b>	98,666	50,586	48,080				
<b>9</b>	97,648	49,940	47,708	<b>22</b>	98,139	50,093	48,046				
<b>10</b>	99,684	50,978	48,706	<b>23</b>	97,328	49,246	48,082				
<b>11</b>	99,865	51,088	48,777	<b>24</b>	98,006	49,919	48,087				

**Median Age**

Total	Male	Female
39.9	39.0	40.8

**Notes:**

- 1) Unrounded data should not be considered accurate to the last digit.
- 2) Age detail data are provided to develop a variety of age groupings. Single year age values should not be considered reliable.
- 3) Totals may not add due to rounding.

**Population by Age and Sex  
Population Forecast for April 1, 2027  
State of Washington**

**5-Year Age Groups**

Age	Total	Male	Female
<b>Total</b>	8,103,143	4,040,282	4,062,861
<b>0-4</b>	441,885	226,045	215,840
<b>5-9</b>	451,760	231,045	220,715
<b>10-14</b>	499,649	255,617	244,032
<b>15-19</b>	505,117	258,218	246,899
<b>20-24</b>	500,054	255,481	244,573
<b>25-29</b>	519,364	264,836	254,528
<b>30-34</b>	557,826	283,597	274,229
<b>35-39</b>	566,640	289,797	276,843
<b>40-44</b>	540,336	275,662	264,674
<b>45-49</b>	510,054	257,956	252,098
<b>50-54</b>	452,094	226,804	225,290
<b>55-59</b>	474,824	237,991	236,833
<b>60-64</b>	459,611	226,103	233,508
<b>65-69</b>	470,462	227,432	243,030
<b>70-74</b>	425,104	200,412	224,692
<b>75-79</b>	334,115	154,580	179,535
<b>80-84</b>	215,214	96,845	118,369
<b>85+</b>	179,034	71,861	107,173

**Percentage of Total Population**

Age	Total	Male	Female
<b>Total</b>	100.0000	49.8607	50.1393
<b>0-4</b>	5.4533	2.7896	2.6637
<b>5-9</b>	5.5751	2.8513	2.7238
<b>10-14</b>	6.1661	3.1545	3.0116
<b>15-19</b>	6.2336	3.1866	3.0470
<b>20-24</b>	6.1711	3.1529	3.0182
<b>25-29</b>	6.4094	3.2683	3.1411
<b>30-34</b>	6.8841	3.4998	3.3842
<b>35-39</b>	6.9928	3.5764	3.4165
<b>40-44</b>	6.6682	3.4019	3.2663
<b>45-49</b>	6.2945	3.1834	3.1111
<b>50-54</b>	5.5792	2.7990	2.7803
<b>55-59</b>	5.8598	2.9370	2.9227
<b>60-64</b>	5.6720	2.7903	2.8817
<b>65-69</b>	5.8059	2.8067	2.9992
<b>70-74</b>	5.2462	2.4733	2.7729
<b>75-79</b>	4.1233	1.9077	2.2156
<b>80-84</b>	2.6559	1.1952	1.4608
<b>85+</b>	2.2094	0.8868	1.3226

**Components of Change**

	Total	Male	Female
<b>Births</b>	88,792	45,461	43,331
<b>Deaths</b>	67,011	35,431	31,580
<b>Natural Increase</b>	21,781	10,030	11,751
<b>Net Migration</b>	45,195	22,815	22,380
<b>Total Change</b>	66,976	32,845	34,131

**Components as % of Previous Year's Total Population**

	Total	Male	Female
<b>Births</b>	1.1049	0.5657	0.5392
<b>Deaths</b>	0.8339	0.4409	0.3930
<b>Natural Increase</b>	0.2710	0.1248	0.1462
<b>Net Migration</b>	0.5624	0.2839	0.2785
<b>Total Change</b>	0.8334	0.4087	0.4247

**Age Detail**

Age	Total	Male	Female	Age	Total	Male	Female	Age	Total	Male	Female
<b>0-24</b>	2,398,465	1,226,406	1,172,059	<b>12</b>	100,446	51,393	49,053	<b>60-65</b>	554,353	272,282	282,071
<b>0</b>	88,326	45,199	43,127	<b>13</b>	99,849	51,089	48,760	<b>60</b>	87,357	43,256	44,101
<b>1</b>	87,857	44,943	42,914	<b>14</b>	100,690	51,519	49,171	<b>61</b>	87,971	43,555	44,416
<b>2</b>	88,092	45,059	43,033	<b>15</b>	100,725	51,532	49,193	<b>62</b>	93,731	46,179	47,552
<b>3</b>	88,626	45,331	43,295	<b>16</b>	99,609	50,954	48,655	<b>63</b>	94,571	46,259	48,312
<b>4</b>	88,984	45,513	43,471	<b>17</b>	100,513	51,356	49,157	<b>64</b>	95,981	46,854	49,127
<b>5</b>	89,127	45,583	43,544	<b>18</b>	101,179	51,494	49,685	<b>65</b>	94,742	46,179	48,563
<b>6</b>	88,915	45,473	43,442	<b>19</b>	103,091	52,882	50,209				
<b>7</b>	88,981	45,507	43,474	<b>20</b>	102,633	52,715	49,918				
<b>8</b>	90,643	46,358	44,285	<b>21</b>	99,746	51,186	48,560				
<b>9</b>	94,094	48,124	45,970	<b>22</b>	99,842	51,139	48,703				
<b>10</b>	98,374	50,311	48,063	<b>23</b>	99,317	50,642	48,675				
<b>11</b>	100,290	51,305	48,985	<b>24</b>	98,516	49,799	48,717				

**Median Age**

Total	Male	Female
40.1	39.2	41.0

**Notes:**

- 1) Unrounded data should not be considered accurate to the last digit.
- 2) Age detail data are provided to develop a variety of age groupings. Single year age values should not be considered reliable.
- 3) Totals may not add due to rounding.

**Population by Age and Sex  
Population Forecast for April 1, 2028  
State of Washington**

**5-Year Age Groups**

Age	Total	Male	Female
<b>Total</b>	8,170,573	4,073,367	4,097,206
<b>0-4</b>	444,843	227,561	217,282
<b>5-9</b>	450,327	230,312	220,015
<b>10-14</b>	496,101	253,803	242,298
<b>15-19</b>	506,176	258,596	247,580
<b>20-24</b>	510,684	261,491	249,193
<b>25-29</b>	517,204	263,259	253,945
<b>30-34</b>	552,090	280,187	271,903
<b>35-39</b>	578,084	295,741	282,343
<b>40-44</b>	541,669	276,534	265,135
<b>45-49</b>	523,017	265,180	257,837
<b>50-54</b>	458,850	230,234	228,616
<b>55-59</b>	472,628	236,612	236,016
<b>60-64</b>	451,155	222,362	228,793
<b>65-69</b>	470,444	227,594	242,850
<b>70-74</b>	431,384	203,849	227,535
<b>75-79</b>	342,868	158,622	184,246
<b>80-84</b>	231,509	104,007	127,502
<b>85+</b>	191,540	77,423	114,117

**Percentage of Total Population**

Age	Total	Male	Female
<b>Total</b>	100.0000	49.8541	50.1459
<b>0-4</b>	5.4445	2.7851	2.6593
<b>5-9</b>	5.5116	2.8188	2.6928
<b>10-14</b>	6.0718	3.1063	2.9655
<b>15-19</b>	6.1951	3.1650	3.0301
<b>20-24</b>	6.2503	3.2004	3.0499
<b>25-29</b>	6.3301	3.2220	3.1080
<b>30-34</b>	6.7571	3.4292	3.3278
<b>35-39</b>	7.0752	3.6196	3.4556
<b>40-44</b>	6.6295	3.3845	3.2450
<b>45-49</b>	6.4012	3.2455	3.1557
<b>50-54</b>	5.6159	2.8178	2.7980
<b>55-59</b>	5.7845	2.8959	2.8886
<b>60-64</b>	5.5217	2.7215	2.8002
<b>65-69</b>	5.7578	2.7855	2.9723
<b>70-74</b>	5.2797	2.4949	2.7848
<b>75-79</b>	4.1964	1.9414	2.2550
<b>80-84</b>	2.8334	1.2729	1.5605
<b>85+</b>	2.3443	0.9476	1.3967

**Components of Change**

	Total	Male	Female
<b>Births</b>	89,530	45,839	43,691
<b>Deaths</b>	68,605	36,228	32,377
<b>Natural Increase</b>	20,925	9,611	11,314
<b>Net Migration</b>	46,505	23,474	23,031
<b>Total Change</b>	67,430	33,085	34,345

**Components as % of Previous Year's Total Population**

	Total	Male	Female
<b>Births</b>	1.1049	0.5657	0.5392
<b>Deaths</b>	0.8466	0.4471	0.3996
<b>Natural Increase</b>	0.2582	0.1186	0.1396
<b>Net Migration</b>	0.5739	0.2897	0.2842
<b>Total Change</b>	0.8321	0.4083	0.4238

**Age Detail**

Age	Total	Male	Female	Age	Total	Male	Female	Age	Total	Male	Female
<b>0-24</b>	2,408,131	1,231,763	1,176,368	<b>12</b>	100,888	51,619	49,269	<b>60-65</b>	546,570	268,831	277,739
<b>0</b>	89,066	45,578	43,488	<b>13</b>	101,012	51,682	49,330	<b>60</b>	89,243	44,342	44,901
<b>1</b>	88,526	45,286	43,240	<b>14</b>	100,402	51,371	49,031	<b>61</b>	86,998	42,994	44,004
<b>2</b>	88,744	45,393	43,351	<b>15</b>	101,235	51,795	49,440	<b>62</b>	87,577	43,269	44,308
<b>3</b>	88,999	45,523	43,476	<b>16</b>	101,307	51,826	49,481	<b>63</b>	93,273	45,852	47,421
<b>4</b>	89,508	45,781	43,727	<b>17</b>	100,211	51,244	48,967	<b>64</b>	94,064	45,905	48,159
<b>5</b>	89,792	45,925	43,867	<b>18</b>	101,217	51,708	49,509	<b>65</b>	95,415	46,469	48,946
<b>6</b>	89,874	45,965	43,909	<b>19</b>	102,206	52,023	50,183				
<b>7</b>	89,632	45,839	43,793	<b>20</b>	104,188	53,454	50,734				
<b>8</b>	89,686	45,867	43,819	<b>21</b>	103,893	53,331	50,562				
<b>9</b>	91,343	46,716	44,627	<b>22</b>	100,967	51,762	49,205				
<b>10</b>	94,812	48,490	46,322	<b>23</b>	101,072	51,715	49,357				
<b>11</b>	98,987	50,641	48,346	<b>24</b>	100,564	51,229	49,335				

**Median Age**

Total	Male	Female
40.3	39.4	41.2

**Notes:**

- 1) Unrounded data should not be considered accurate to the last digit.
- 2) Age detail data are provided to develop a variety of age groupings. Single year age values should not be considered reliable.
- 3) Totals may not add due to rounding.



**Population by Age and Sex  
Population Forecast for April 1, 2029  
State of Washington**

<b>5-Year Age Groups</b>				<b>Percentage of Total Population</b>			
<b>Age</b>	<b>Total</b>	<b>Male</b>	<b>Female</b>	<b>Age</b>	<b>Total</b>	<b>Male</b>	<b>Female</b>
<b>Total</b>	8,238,162	4,106,575	4,131,587	<b>Total</b>	100.0000	49.8482	50.1518
<b>0-4</b>	448,153	229,257	218,896	<b>0-4</b>	5.4400	2.7829	2.6571
<b>5-9</b>	452,262	231,301	220,961	<b>5-9</b>	5.4898	2.8077	2.6822
<b>10-14</b>	490,109	250,739	239,370	<b>10-14</b>	5.9493	3.0436	2.9056
<b>15-19</b>	507,918	259,731	248,187	<b>15-19</b>	6.1654	3.1528	3.0127
<b>20-24</b>	518,608	265,321	253,287	<b>20-24</b>	6.2952	3.2206	3.0746
<b>25-29</b>	517,233	262,924	254,309	<b>25-29</b>	6.2785	3.1915	3.0870
<b>30-34</b>	549,123	279,107	270,016	<b>30-34</b>	6.6656	3.3880	3.2776
<b>35-39</b>	583,843	297,851	285,992	<b>35-39</b>	7.0871	3.6155	3.4716
<b>40-44</b>	547,201	279,649	267,552	<b>40-44</b>	6.6423	3.3946	3.2477
<b>45-49</b>	533,875	271,043	262,832	<b>45-49</b>	6.4805	3.2901	3.1904
<b>50-54</b>	468,287	235,301	232,986	<b>50-54</b>	5.6844	2.8562	2.8281
<b>55-59</b>	465,735	232,832	232,903	<b>55-59</b>	5.6534	2.8263	2.8271
<b>60-64</b>	447,926	221,468	226,458	<b>60-64</b>	5.4372	2.6883	2.7489
<b>65-69</b>	469,988	227,557	242,431	<b>65-69</b>	5.7050	2.7622	2.9428
<b>70-74</b>	435,358	206,475	228,883	<b>70-74</b>	5.2846	2.5063	2.7783
<b>75-79</b>	353,556	162,894	190,662	<b>75-79</b>	4.2917	1.9773	2.3144
<b>80-84</b>	245,108	110,337	134,771	<b>80-84</b>	2.9753	1.3393	1.6359
<b>85+</b>	203,879	82,788	121,091	<b>85+</b>	2.4748	1.0049	1.4699

<b>Components of Change</b>			
	<b>Total</b>	<b>Male</b>	<b>Female</b>
<b>Births</b>	90,315	46,241	44,074
<b>Deaths</b>	70,371	37,080	33,291
<b>Natural Increase</b>	19,944	9,161	10,783
<b>Net Migration</b>	47,645	24,047	23,598
<b>Total Change</b>	67,589	33,208	34,381

<b>Components as % of Previous Year's Total Population</b>			
	<b>Total</b>	<b>Male</b>	<b>Female</b>
<b>Births</b>	1.1054	0.5659	0.5394
<b>Deaths</b>	0.8613	0.4538	0.4075
<b>Natural Increase</b>	0.2441	0.1121	0.1320
<b>Net Migration</b>	0.5831	0.2943	0.2888
<b>Total Change</b>	0.8272	0.4064	0.4208

<b>Age Detail</b>											
<b>Age</b>	<b>Total</b>	<b>Male</b>	<b>Female</b>	<b>Age</b>	<b>Total</b>	<b>Male</b>	<b>Female</b>	<b>Age</b>	<b>Total</b>	<b>Male</b>	<b>Female</b>
<b>0-24</b>	2,417,050	1,236,349	1,180,701	<b>12</b>	99,589	50,957	48,632	<b>60-65</b>	541,452	267,005	274,447
<b>0</b>	89,852	45,981	43,871	<b>13</b>	101,468	51,915	49,553	<b>60</b>	92,465	46,188	46,277
<b>1</b>	89,283	45,674	43,609	<b>14</b>	101,582	51,973	49,609	<b>61</b>	88,889	44,080	44,809
<b>2</b>	89,439	45,749	43,690	<b>15</b>	100,957	51,652	49,305	<b>62</b>	86,621	42,719	43,902
<b>3</b>	89,678	45,870	43,808	<b>16</b>	101,833	52,097	49,736	<b>63</b>	87,163	42,971	44,192
<b>4</b>	89,901	45,983	43,918	<b>17</b>	101,933	52,128	49,805	<b>64</b>	92,788	45,510	47,278
<b>5</b>	90,338	46,204	44,134	<b>18</b>	100,928	51,603	49,325	<b>65</b>	93,526	45,537	47,989
<b>6</b>	90,559	46,317	44,242	<b>19</b>	102,267	52,251	50,016				
<b>7</b>	90,613	46,342	44,271	<b>20</b>	103,317	52,598	50,719				
<b>8</b>	90,357	46,209	44,148	<b>21</b>	105,495	54,093	51,402				
<b>9</b>	90,395	46,229	44,166	<b>22</b>	105,191	53,944	51,247				
<b>10</b>	92,054	47,079	44,975	<b>23</b>	102,238	52,359	49,879				
<b>11</b>	95,416	48,815	46,601	<b>24</b>	102,367	52,327	50,040				

<b>Median Age</b>		
<b>Total</b>	<b>Male</b>	<b>Female</b>
40.5	39.6	41.4

**Notes:**

- 1) Unrounded data should not be considered accurate to the last digit.
- 2) Age detail data are provided to develop a variety of age groupings. Single year age values should not be considered reliable.
- 3) Totals may not add due to rounding.

**Population by Age and Sex  
Population Forecast for April 1, 2030  
State of Washington**

**5-Year Age Groups**

Age	Total	Male	Female
<b>Total</b>	8,305,890	4,139,907	4,165,983
<b>0-4</b>	451,964	231,210	220,754
<b>5-9</b>	455,632	233,028	222,604
<b>10-14</b>	481,991	246,586	235,405
<b>15-19</b>	510,863	261,285	249,578
<b>20-24</b>	524,987	268,375	256,612
<b>25-29</b>	518,646	263,611	255,035
<b>30-34</b>	548,382	278,987	269,395
<b>35-39</b>	583,675	296,792	286,883
<b>40-44</b>	554,331	283,932	270,399
<b>45-49</b>	538,868	273,506	265,362
<b>50-54</b>	481,367	242,322	239,045
<b>55-59</b>	457,461	228,509	228,952
<b>60-64</b>	452,673	224,381	228,292
<b>65-69</b>	465,346	225,573	239,773
<b>70-74</b>	439,328	209,047	230,281
<b>75-79</b>	364,832	167,949	196,883
<b>80-84</b>	259,792	116,900	142,892
<b>85+</b>	215,752	87,914	127,838

**Percentage of Total Population**

Age	Total	Male	Female
<b>Total</b>	100.0000	49.8430	50.1570
<b>0-4</b>	5.4415	2.7837	2.6578
<b>5-9</b>	5.4856	2.8056	2.6801
<b>10-14</b>	5.8030	2.9688	2.8342
<b>15-19</b>	6.1506	3.1458	3.0048
<b>20-24</b>	6.3207	3.2311	3.0895
<b>25-29</b>	6.2443	3.1738	3.0705
<b>30-34</b>	6.6023	3.3589	3.2434
<b>35-39</b>	7.0272	3.5733	3.4540
<b>40-44</b>	6.6740	3.4184	3.2555
<b>45-49</b>	6.4878	3.2929	3.1949
<b>50-54</b>	5.7955	2.9175	2.8780
<b>55-59</b>	5.5077	2.7512	2.7565
<b>60-64</b>	5.4500	2.7015	2.7486
<b>65-69</b>	5.6026	2.7158	2.8868
<b>70-74</b>	5.2894	2.5169	2.7725
<b>75-79</b>	4.3924	2.0220	2.3704
<b>80-84</b>	3.1278	1.4074	1.7204
<b>85+</b>	2.5976	1.0585	1.5391

**Components of Change**

	Total	Male	Female
<b>Births</b>	91,114	46,650	44,464
<b>Deaths</b>	72,086	37,899	34,187
<b>Natural Increase</b>	19,028	8,751	10,277
<b>Net Migration</b>	48,700	24,581	24,119
<b>Total Change</b>	67,728	33,332	34,396

**Components as % of Previous Year's Total Population**

	Total	Male	Female
<b>Births</b>	1.1060	0.5663	0.5397
<b>Deaths</b>	0.8750	0.4600	0.4150
<b>Natural Increase</b>	0.2310	0.1062	0.1247
<b>Net Migration</b>	0.5912	0.2984	0.2928
<b>Total Change</b>	0.8221	0.4046	0.4175

**Age Detail**

Age	Total	Male	Female	Age	Total	Male	Female	Age	Total	Male	Female
<b>0-24</b>	2,425,437	1,240,484	1,184,953	<b>12</b>	96,007	49,125	46,882	<b>60-65</b>	544,945	269,535	275,410
<b>0</b>	90,652	46,391	44,261	<b>13</b>	100,172	51,255	48,917	<b>60</b>	99,103	49,567	49,536
<b>1</b>	90,088	46,087	44,001	<b>14</b>	102,052	52,213	49,839	<b>61</b>	92,109	45,922	46,187
<b>2</b>	90,221	46,150	44,071	<b>15</b>	102,154	52,263	49,891	<b>62</b>	88,515	43,804	44,711
<b>3</b>	90,397	46,238	44,159	<b>16</b>	101,564	51,959	49,605	<b>63</b>	86,224	42,431	43,793
<b>4</b>	90,606	46,344	44,262	<b>17</b>	102,473	52,406	50,067	<b>64</b>	86,722	42,657	44,065
<b>5</b>	90,750	46,416	44,334	<b>18</b>	102,677	52,501	50,176	<b>65</b>	92,272	45,154	47,118
<b>6</b>	91,124	46,606	44,518	<b>19</b>	101,995	52,156	49,839				
<b>7</b>	91,317	46,704	44,613	<b>20</b>	103,399	52,840	50,559				
<b>8</b>	91,358	46,722	44,636	<b>21</b>	104,637	53,238	51,399				
<b>9</b>	91,083	46,580	44,503	<b>22</b>	106,839	54,727	52,112				
<b>10</b>	91,111	46,594	44,517	<b>23</b>	106,539	54,578	51,961				
<b>11</b>	92,649	47,399	45,250	<b>24</b>	103,573	52,992	50,581				

**Median Age**

Total	Male	Female
40.7	39.8	41.6

**Notes:**

- 1) Unrounded data should not be considered accurate to the last digit.
- 2) Age detail data are provided to develop a variety of age groupings. Single year age values should not be considered reliable.
- 3) Totals may not add due to rounding.

**Population by Age and Sex  
Population Forecast for April 1, 2031  
State of Washington**

**5-Year Age Groups**

Age	Total	Male	Female
<b>Total</b>	8,372,736	4,172,841	4,199,895
<b>0-4</b>	455,876	233,214	222,662
<b>5-9</b>	459,028	234,769	224,259
<b>10-14</b>	474,026	242,510	231,516
<b>15-19</b>	514,559	263,178	251,381
<b>20-24</b>	529,918	270,680	259,238
<b>25-29</b>	521,911	265,340	256,571
<b>30-34</b>	548,420	279,168	269,252
<b>35-39</b>	580,357	295,177	285,180
<b>40-44</b>	563,220	288,079	275,141
<b>45-49</b>	543,858	276,514	267,344
<b>50-54</b>	495,975	249,706	246,269
<b>55-59</b>	448,534	223,839	224,695
<b>60-64</b>	462,608	229,618	232,990
<b>65-69</b>	455,190	221,269	233,921
<b>70-74</b>	442,936	211,010	231,926
<b>75-79</b>	375,226	172,989	202,237
<b>80-84</b>	275,030	123,424	151,606
<b>85+</b>	226,064	92,357	133,707

**Percentage of Total Population**

Age	Total	Male	Female
<b>Total</b>	100.0000	49.8384	50.1616
<b>0-4</b>	5.4448	2.7854	2.6594
<b>5-9</b>	5.4824	2.8040	2.6784
<b>10-14</b>	5.6615	2.8964	2.7651
<b>15-19</b>	6.1456	3.1433	3.0024
<b>20-24</b>	6.3291	3.2329	3.0962
<b>25-29</b>	6.2335	3.1691	3.0644
<b>30-34</b>	6.5501	3.3343	3.2158
<b>35-39</b>	6.9315	3.5255	3.4061
<b>40-44</b>	6.7268	3.4407	3.2862
<b>45-49</b>	6.4956	3.3026	3.1930
<b>50-54</b>	5.9237	2.9824	2.9413
<b>55-59</b>	5.3571	2.6734	2.6837
<b>60-64</b>	5.5252	2.7424	2.7827
<b>65-69</b>	5.4366	2.6427	2.7938
<b>70-74</b>	5.2902	2.5202	2.7700
<b>75-79</b>	4.4815	2.0661	2.4154
<b>80-84</b>	3.2848	1.4741	1.8107
<b>85+</b>	2.7000	1.1031	1.5969

**Components of Change**

	Total	Male	Female
<b>Births</b>	91,908	47,056	44,852
<b>Deaths</b>	73,762	38,697	35,065
<b>Natural Increase</b>	18,146	8,359	9,787
<b>Net Migration</b>	48,700	24,575	24,125
<b>Total Change</b>	66,846	32,934	33,912

**Components as % of Previous Year's Total Population**

	Total	Male	Female
<b>Births</b>	1.1065	0.5665	0.5400
<b>Deaths</b>	0.8881	0.4659	0.4222
<b>Natural Increase</b>	0.2185	0.1006	0.1178
<b>Net Migration</b>	0.5863	0.2959	0.2905
<b>Total Change</b>	0.8048	0.3965	0.4083

**Age Detail**

Age	Total	Male	Female	Age	Total	Male	Female	Age	Total	Male	Female
<b>0-24</b>	2,433,407	1,244,351	1,189,056	<b>12</b>	93,219	47,698	45,521	<b>60-65</b>	548,856	271,947	276,909
<b>0</b>	91,447	46,797	44,650	<b>13</b>	96,565	49,410	47,155	<b>60</b>	98,242	49,054	49,188
<b>1</b>	90,890	46,498	44,392	<b>14</b>	100,745	51,547	49,198	<b>61</b>	98,728	49,286	49,442
<b>2</b>	91,030	46,565	44,465	<b>15</b>	102,623	52,502	50,121	<b>62</b>	91,727	45,639	46,088
<b>3</b>	91,182	46,641	44,541	<b>16</b>	102,765	52,572	50,193	<b>63</b>	88,115	43,513	44,602
<b>4</b>	91,327	46,713	44,614	<b>17</b>	102,198	52,265	49,933	<b>64</b>	85,796	42,126	43,670
<b>5</b>	91,457	46,778	44,679	<b>18</b>	103,217	52,779	50,438	<b>65</b>	86,248	42,329	43,919
<b>6</b>	91,536	46,818	44,718	<b>19</b>	103,756	53,060	50,696				
<b>7</b>	91,883	46,993	44,890	<b>20</b>	103,118	52,741	50,377				
<b>8</b>	92,064	47,085	44,979	<b>21</b>	104,713	53,480	51,233				
<b>9</b>	92,088	47,095	44,993	<b>22</b>	105,963	53,858	52,105				
<b>10</b>	91,800	46,946	44,854	<b>23</b>	108,202	55,367	52,835				
<b>11</b>	91,697	46,909	44,788	<b>24</b>	107,922	55,234	52,688				

**Median Age**

Total	Male	Female
40.9	40.0	41.7

**Notes:**

- 1) Unrounded data should not be considered accurate to the last digit.
- 2) Age detail data are provided to develop a variety of age groupings. Single year age values should not be considered reliable.
- 3) Totals may not add due to rounding.

**Population by Age and Sex  
Population Forecast for April 1, 2032  
State of Washington**

**5-Year Age Groups**

Age	Total	Male	Female
<b>Total</b>	8,438,841	4,205,461	4,233,380
<b>0-4</b>	459,909	235,282	224,627
<b>5-9</b>	462,146	236,368	225,778
<b>10-14</b>	468,326	239,592	228,734
<b>15-19</b>	515,173	263,494	251,679
<b>20-24</b>	532,256	271,643	260,613
<b>25-29</b>	532,220	270,853	261,367
<b>30-34</b>	545,842	277,882	267,960
<b>35-39</b>	574,936	292,069	282,867
<b>40-44</b>	576,139	294,350	281,789
<b>45-49</b>	544,785	277,475	267,310
<b>50-54</b>	510,492	257,374	253,118
<b>55-59</b>	448,626	223,823	224,803
<b>60-64</b>	466,672	231,834	234,838
<b>65-69</b>	445,974	217,014	228,960
<b>70-74</b>	443,983	211,827	232,156
<b>75-79</b>	383,936	177,388	206,548
<b>80-84</b>	280,661	125,787	154,874
<b>85+</b>	246,765	101,406	145,359

**Percentage of Total Population**

Age	Total	Male	Female
<b>Total</b>	100.0000	49.8346	50.1654
<b>0-4</b>	5.4499	2.7881	2.6618
<b>5-9</b>	5.4764	2.8010	2.6755
<b>10-14</b>	5.5496	2.8392	2.7105
<b>15-19</b>	6.1048	3.1224	2.9824
<b>20-24</b>	6.3072	3.2190	3.0883
<b>25-29</b>	6.3068	3.2096	3.0972
<b>30-34</b>	6.4682	3.2929	3.1753
<b>35-39</b>	6.8130	3.4610	3.3520
<b>40-44</b>	6.8272	3.4880	3.3392
<b>45-49</b>	6.4557	3.2881	3.1676
<b>50-54</b>	6.0493	3.0499	2.9994
<b>55-59</b>	5.3162	2.6523	2.6639
<b>60-64</b>	5.5300	2.7472	2.7828
<b>65-69</b>	5.2848	2.5716	2.7132
<b>70-74</b>	5.2612	2.5101	2.7510
<b>75-79</b>	4.5496	2.1020	2.4476
<b>80-84</b>	3.3258	1.4906	1.8353
<b>85+</b>	2.9242	1.2017	1.7225

**Components of Change**

	Total	Male	Female
<b>Births</b>	92,736	47,480	45,256
<b>Deaths</b>	75,331	39,436	35,895
<b>Natural Increase</b>	17,405	8,044	9,361
<b>Net Migration</b>	48,700	24,576	24,124
<b>Total Change</b>	66,105	32,620	33,485

**Components as % of Previous Year's Total Population**

	Total	Male	Female
<b>Births</b>	1.1076	0.5671	0.5405
<b>Deaths</b>	0.8997	0.4710	0.4287
<b>Natural Increase</b>	0.2079	0.0961	0.1118
<b>Net Migration</b>	0.5816	0.2935	0.2881
<b>Total Change</b>	0.7895	0.3896	0.3999

**Age Detail**

Age	Total	Male	Female	Age	Total	Male	Female	Age	Total	Male	Female
<b>0-24</b>	2,437,810	1,246,379	1,191,431	<b>12</b>	92,258	47,203	45,055	<b>60-65</b>	552,005	273,640	278,365
<b>0</b>	92,276	47,222	45,054	<b>13</b>	93,757	47,973	45,784	<b>60</b>	91,469	45,520	45,949
<b>1</b>	91,688	46,906	44,782	<b>14</b>	97,115	49,691	47,424	<b>61</b>	97,877	48,781	49,096
<b>2</b>	91,835	46,978	44,857	<b>15</b>	101,305	51,831	49,474	<b>62</b>	98,324	48,987	49,337
<b>3</b>	91,995	47,058	44,937	<b>16</b>	103,234	52,811	50,423	<b>63</b>	91,319	45,341	45,978
<b>4</b>	92,115	47,118	44,997	<b>17</b>	103,403	52,880	50,523	<b>64</b>	87,683	43,205	44,478
<b>5</b>	92,180	47,148	45,032	<b>18</b>	102,935	52,634	50,301	<b>65</b>	85,333	41,806	43,527
<b>6</b>	92,245	47,181	45,064	<b>19</b>	104,296	53,338	50,958				
<b>7</b>	92,294	47,205	45,089	<b>20</b>	104,892	53,651	51,241				
<b>8</b>	92,631	47,375	45,256	<b>21</b>	104,422	53,377	51,045				
<b>9</b>	92,796	47,459	45,337	<b>22</b>	106,034	54,101	51,933				
<b>10</b>	92,809	47,463	45,346	<b>23</b>	107,308	54,485	52,823				
<b>11</b>	92,387	47,262	45,125	<b>24</b>	109,600	56,029	53,571				

**Median Age**

Total	Male	Female
41.1	40.3	41.9

**Notes:**

- 1) Unrounded data should not be considered accurate to the last digit.
- 2) Age detail data are provided to develop a variety of age groupings. Single year age values should not be considered reliable.
- 3) Totals may not add due to rounding.

**Population by Age and Sex  
Population Forecast for April 1, 2033  
State of Washington**

**5-Year Age Groups**

Age	Total	Male	Female
<b>Total</b>	8,503,783	4,237,590	4,266,193
<b>0-4</b>	464,037	237,398	226,639
<b>5-9</b>	465,350	238,011	227,339
<b>10-14</b>	466,944	238,884	228,060
<b>15-19</b>	511,580	261,658	249,922
<b>20-24</b>	533,438	272,080	261,358
<b>25-29</b>	543,696	277,309	266,387
<b>30-34</b>	543,735	276,309	267,426
<b>35-39</b>	569,192	288,654	280,538
<b>40-44</b>	587,865	300,442	287,423
<b>45-49</b>	546,225	278,410	267,815
<b>50-54</b>	523,574	264,648	258,926
<b>55-59</b>	455,482	227,300	228,182
<b>60-64</b>	464,655	230,574	234,081
<b>65-69</b>	438,043	213,590	224,453
<b>70-74</b>	444,349	212,208	232,141
<b>75-79</b>	390,084	180,721	209,363
<b>80-84</b>	288,779	129,488	159,291
<b>85+</b>	266,755	109,906	156,849

**Percentage of Total Population**

Age	Total	Male	Female
<b>Total</b>	100.0000	49.8318	50.1682
<b>0-4</b>	5.4568	2.7917	2.6652
<b>5-9</b>	5.4723	2.7989	2.6734
<b>10-14</b>	5.4910	2.8091	2.6819
<b>15-19</b>	6.0159	3.0770	2.9390
<b>20-24</b>	6.2729	3.1995	3.0734
<b>25-29</b>	6.3936	3.2610	3.1326
<b>30-34</b>	6.3940	3.2492	3.1448
<b>35-39</b>	6.6934	3.3944	3.2990
<b>40-44</b>	6.9130	3.5330	3.3799
<b>45-49</b>	6.4233	3.2740	3.1494
<b>50-54</b>	6.1570	3.1121	3.0448
<b>55-59</b>	5.3562	2.6729	2.6833
<b>60-64</b>	5.4641	2.7114	2.7527
<b>65-69</b>	5.1512	2.5117	2.6394
<b>70-74</b>	5.2253	2.4955	2.7299
<b>75-79</b>	4.5872	2.1252	2.4620
<b>80-84</b>	3.3959	1.5227	1.8732
<b>85+</b>	3.1369	1.2924	1.8445

**Components of Change**

	Total	Male	Female
<b>Births</b>	93,606	47,926	45,680
<b>Deaths</b>	77,364	40,374	36,990
<b>Natural Increase</b>	16,242	7,552	8,690
<b>Net Migration</b>	48,700	24,577	24,123
<b>Total Change</b>	64,942	32,129	32,813

**Components as % of Previous Year's Total Population**

	Total	Male	Female
<b>Births</b>	1.1092	0.5679	0.5413
<b>Deaths</b>	0.9168	0.4784	0.4383
<b>Natural Increase</b>	0.1925	0.0895	0.1030
<b>Net Migration</b>	0.5771	0.2912	0.2859
<b>Total Change</b>	0.7696	0.3807	0.3888

**Age Detail**

Age	Total	Male	Female	Age	Total	Male	Female	Age	Total	Male	Female
<b>0-24</b>	2,441,349	1,248,031	1,193,318	<b>12</b>	92,950	47,557	45,393	<b>60-65</b>	551,872	273,456	278,416
<b>0</b>	93,147	47,669	45,478	<b>13</b>	92,788	47,474	45,314	<b>60</b>	87,269	43,119	44,150
<b>1</b>	92,519	47,332	45,187	<b>14</b>	94,287	48,244	46,043	<b>61</b>	91,134	45,270	45,864
<b>2</b>	92,637	47,388	45,249	<b>15</b>	97,653	49,964	47,689	<b>62</b>	97,483	48,489	48,994
<b>3</b>	92,802	47,472	45,330	<b>16</b>	101,904	52,134	49,770	<b>63</b>	97,892	48,671	49,221
<b>4</b>	92,932	47,537	45,395	<b>17</b>	103,872	53,119	50,753	<b>64</b>	90,877	45,025	45,852
<b>5</b>	92,971	47,555	45,416	<b>18</b>	104,145	53,252	50,893	<b>65</b>	87,217	42,882	44,335
<b>6</b>	92,970	47,552	45,418	<b>19</b>	104,006	53,189	50,817				
<b>7</b>	93,005	47,569	45,436	<b>20</b>	105,433	53,930	51,503				
<b>8</b>	93,041	47,586	45,455	<b>21</b>	106,212	54,295	51,917				
<b>9</b>	93,363	47,749	45,614	<b>22</b>	105,731	53,993	51,738				
<b>10</b>	93,519	47,828	45,691	<b>23</b>	107,374	54,728	52,646				
<b>11</b>	93,400	47,781	45,619	<b>24</b>	108,688	55,134	53,554				

**Median Age**

Total	Male	Female
41.3	40.5	42.1

**Notes:**

- 1) Unrounded data should not be considered accurate to the last digit.
- 2) Age detail data are provided to develop a variety of age groupings. Single year age values should not be considered reliable.
- 3) Totals may not add due to rounding.

**Population by Age and Sex  
Population Forecast for April 1, 2034  
State of Washington**

**5-Year Age Groups**

Age	Total	Male	Female
<b>Total</b>	8,567,704	4,269,302	4,298,402
<b>0-4</b>	468,213	239,536	228,677
<b>5-9</b>	468,813	239,787	229,026
<b>10-14</b>	468,954	239,911	229,043
<b>15-19</b>	505,401	258,499	246,902
<b>20-24</b>	535,229	273,258	261,971
<b>25-29</b>	552,121	281,368	270,753
<b>30-34</b>	543,793	275,977	267,816
<b>35-39</b>	566,181	287,571	278,610
<b>40-44</b>	593,727	302,592	291,135
<b>45-49</b>	551,858	281,583	270,275
<b>50-54</b>	534,490	270,535	263,955
<b>55-59</b>	464,952	232,371	232,581
<b>60-64</b>	457,998	226,967	231,031
<b>65-69</b>	435,169	212,896	222,273
<b>70-74</b>	444,204	212,350	231,854
<b>75-79</b>	394,059	183,282	210,777
<b>80-84</b>	298,411	133,308	165,103
<b>85+</b>	284,131	117,511	166,620

**Percentage of Total Population**

Age	Total	Male	Female
<b>Total</b>	100.0000	49.8302	50.1698
<b>0-4</b>	5.4649	2.7958	2.6691
<b>5-9</b>	5.4719	2.7987	2.6731
<b>10-14</b>	5.4735	2.8002	2.6733
<b>15-19</b>	5.8989	3.0171	2.8818
<b>20-24</b>	6.2471	3.1894	3.0577
<b>25-29</b>	6.4442	3.2841	3.1602
<b>30-34</b>	6.3470	3.2211	3.1259
<b>35-39</b>	6.6083	3.3565	3.2519
<b>40-44</b>	6.9298	3.5318	3.3981
<b>45-49</b>	6.4411	3.2866	3.1546
<b>50-54</b>	6.2384	3.1576	3.0808
<b>55-59</b>	5.4268	2.7122	2.7146
<b>60-64</b>	5.3456	2.6491	2.6965
<b>65-69</b>	5.0792	2.4849	2.5943
<b>70-74</b>	5.1846	2.4785	2.7061
<b>75-79</b>	4.5994	2.1392	2.4601
<b>80-84</b>	3.4830	1.5559	1.9270
<b>85+</b>	3.3163	1.3716	1.9447

**Components of Change**

	Total	Male	Female
<b>Births</b>	94,457	48,361	46,096
<b>Deaths</b>	79,236	41,219	38,017
<b>Natural Increase</b>	15,221	7,142	8,079
<b>Net Migration</b>	48,700	24,570	24,130
<b>Total Change</b>	63,921	31,712	32,209

**Components as % of Previous Year's Total Population**

	Total	Male	Female
<b>Births</b>	1.1108	0.5687	0.5421
<b>Deaths</b>	0.9318	0.4847	0.4471
<b>Natural Increase</b>	0.1790	0.0840	0.0950
<b>Net Migration</b>	0.5727	0.2889	0.2838
<b>Total Change</b>	0.7517	0.3729	0.3788

**Age Detail**

Age	Total	Male	Female	Age	Total	Male	Female	Age	Total	Male	Female
<b>0-24</b>	2,446,610	1,250,991	1,195,619	<b>12</b>	93,965	48,077	45,888	<b>60-65</b>	548,397	271,659	276,738
<b>0</b>	93,999	48,104	45,895	<b>13</b>	93,481	47,828	45,653	<b>60</b>	85,783	42,563	43,220
<b>1</b>	93,394	47,781	45,613	<b>14</b>	93,311	47,741	45,570	<b>61</b>	86,956	42,885	44,071
<b>2</b>	93,471	47,815	45,656	<b>15</b>	94,806	48,507	46,299	<b>62</b>	90,773	45,003	45,770
<b>3</b>	93,608	47,884	45,724	<b>16</b>	98,229	50,255	47,974	<b>63</b>	97,061	48,180	48,881
<b>4</b>	93,741	47,952	45,789	<b>17</b>	102,531	52,437	50,094	<b>64</b>	97,425	48,336	49,089
<b>5</b>	93,791	47,975	45,816	<b>18</b>	104,613	53,490	51,123	<b>65</b>	90,399	44,692	45,707
<b>6</b>	93,763	47,960	45,803	<b>19</b>	105,222	53,810	51,412				
<b>7</b>	93,732	47,941	45,791	<b>20</b>	105,134	53,776	51,358				
<b>8</b>	93,754	47,951	45,803	<b>21</b>	106,752	54,573	52,179				
<b>9</b>	93,773	47,960	45,813	<b>22</b>	107,537	54,918	52,619				
<b>10</b>	94,086	48,118	45,968	<b>23</b>	107,059	54,615	52,444				
<b>11</b>	94,111	48,147	45,964	<b>24</b>	108,747	55,376	53,371				

**Median Age**

Total	Male	Female
41.5	40.7	42.3

**Notes:**

- 1) Unrounded data should not be considered accurate to the last digit.
- 2) Age detail data are provided to develop a variety of age groupings. Single year age values should not be considered reliable.
- 3) Totals may not add due to rounding.

**Population by Age and Sex  
Population Forecast for April 1, 2035  
State of Washington**

**5-Year Age Groups**

Age	Total	Male	Female
<b>Total</b>	8,630,825	4,300,697	4,330,128
<b>0-4</b>	472,438	241,699	230,739
<b>5-9</b>	472,683	241,771	230,912
<b>10-14</b>	472,355	241,654	230,701
<b>15-19</b>	496,963	254,184	242,779
<b>20-24</b>	538,178	274,817	263,361
<b>25-29</b>	558,736	284,527	274,209
<b>30-34</b>	545,174	276,650	268,524
<b>35-39</b>	565,352	287,417	277,935
<b>40-44</b>	593,500	301,495	292,005
<b>45-49</b>	559,071	285,917	273,154
<b>50-54</b>	539,535	273,029	266,506
<b>55-59</b>	478,050	239,387	238,663
<b>60-64</b>	450,022	222,862	227,160
<b>65-69</b>	440,061	215,874	224,187
<b>70-74</b>	440,109	210,686	229,423
<b>75-79</b>	398,129	185,852	212,277
<b>80-84</b>	308,563	137,800	170,763
<b>85+</b>	301,906	125,076	176,830

**Percentage of Total Population**

Age	Total	Male	Female
<b>Total</b>	100.0000	49.8295	50.1705
<b>0-4</b>	5.4738	2.8004	2.6734
<b>5-9</b>	5.4767	2.8013	2.6754
<b>10-14</b>	5.4729	2.7999	2.6730
<b>15-19</b>	5.7580	2.9451	2.8129
<b>20-24</b>	6.2355	3.1841	3.0514
<b>25-29</b>	6.4737	3.2966	3.1771
<b>30-34</b>	6.3166	3.2054	3.1112
<b>35-39</b>	6.5504	3.3301	3.2203
<b>40-44</b>	6.8765	3.4932	3.3833
<b>45-49</b>	6.4776	3.3127	3.1649
<b>50-54</b>	6.2513	3.1634	3.0878
<b>55-59</b>	5.5389	2.7736	2.7652
<b>60-64</b>	5.2141	2.5822	2.6320
<b>65-69</b>	5.0987	2.5012	2.5975
<b>70-74</b>	5.0993	2.4411	2.6582
<b>75-79</b>	4.6129	2.1534	2.4595
<b>80-84</b>	3.5751	1.5966	1.9785
<b>85+</b>	3.4980	1.4492	2.0488

**Components of Change**

	Total	Male	Female
<b>Births</b>	95,298	48,792	46,506
<b>Deaths</b>	80,877	41,969	38,908
<b>Natural Increase</b>	14,421	6,823	7,598
<b>Net Migration</b>	48,700	24,572	24,128
<b>Total Change</b>	63,121	31,395	31,726

**Components as % of Previous Year's Total Population**

	Total	Male	Female
<b>Births</b>	1.1123	0.5695	0.5428
<b>Deaths</b>	0.9440	0.4899	0.4541
<b>Natural Increase</b>	0.1683	0.0796	0.0887
<b>Net Migration</b>	0.5684	0.2868	0.2816
<b>Total Change</b>	0.7367	0.3664	0.3703

**Age Detail**

Age	Total	Male	Female	Age	Total	Male	Female	Age	Total	Male	Female
<b>0-24</b>	2,452,617	1,254,125	1,198,492	<b>12</b>	94,678	48,444	46,234	<b>60-65</b>	546,943	270,847	276,096
<b>0</b>	94,841	48,536	46,305	<b>13</b>	94,499	48,350	46,149	<b>60</b>	90,930	45,316	45,614
<b>1</b>	94,249	48,217	46,032	<b>14</b>	94,004	48,095	45,909	<b>61</b>	85,480	42,336	43,144
<b>2</b>	94,352	48,268	46,084	<b>15</b>	93,821	48,000	45,821	<b>62</b>	86,619	42,636	43,983
<b>3</b>	94,446	48,313	46,133	<b>16</b>	95,362	48,788	46,574	<b>63</b>	90,388	44,721	45,667
<b>4</b>	94,550	48,365	46,185	<b>17</b>	98,830	50,546	48,284	<b>64</b>	96,605	47,853	48,752
<b>5</b>	94,602	48,391	46,211	<b>18</b>	103,260	52,802	50,458	<b>65</b>	96,921	47,985	48,936
<b>6</b>	94,584	48,380	46,204	<b>19</b>	105,690	54,048	51,642				
<b>7</b>	94,527	48,350	46,177	<b>20</b>	106,358	54,401	51,957				
<b>8</b>	94,482	48,324	46,158	<b>21</b>	106,443	54,415	52,028				
<b>9</b>	94,488	48,326	46,162	<b>22</b>	108,075	55,196	52,879				
<b>10</b>	94,495	48,328	46,167	<b>23</b>	108,881	55,547	53,334				
<b>11</b>	94,679	48,437	46,242	<b>24</b>	108,421	55,258	53,163				

**Median Age**

Total	Male	Female
41.7	40.8	42.5

**Notes:**

- 1) Unrounded data should not be considered accurate to the last digit.
- 2) Age detail data are provided to develop a variety of age groupings. Single year age values should not be considered reliable.
- 3) Totals may not add due to rounding.

**Population by Age and Sex  
Population Forecast for April 1, 2036  
State of Washington**

**5-Year Age Groups**

Age	Total	Male	Female
<b>Total</b>	8,693,232	4,331,832	4,361,400
<b>0-4</b>	476,729	243,899	232,830
<b>5-9</b>	476,662	243,811	232,851
<b>10-14</b>	475,783	243,411	232,372
<b>15-19</b>	488,669	249,944	238,725
<b>20-24</b>	541,938	276,741	265,197
<b>25-29</b>	563,800	286,887	276,913
<b>30-34</b>	548,500	278,419	270,081
<b>35-39</b>	565,311	287,566	277,745
<b>40-44</b>	590,075	299,829	290,246
<b>45-49</b>	568,055	290,109	277,946
<b>50-54</b>	544,570	276,064	268,506
<b>55-59</b>	492,639	246,741	245,898
<b>60-64</b>	441,400	218,416	222,984
<b>65-69</b>	449,914	221,042	228,872
<b>70-74</b>	430,720	206,811	223,909
<b>75-79</b>	401,840	187,852	213,988
<b>80-84</b>	317,837	142,220	175,617
<b>85+</b>	318,790	132,070	186,720

**Percentage of Total Population**

Age	Total	Male	Female
<b>Total</b>	100.0000	49.8299	50.1701
<b>0-4</b>	5.4839	2.8056	2.6783
<b>5-9</b>	5.4831	2.8046	2.6785
<b>10-14</b>	5.4730	2.8000	2.6730
<b>15-19</b>	5.6213	2.8752	2.7461
<b>20-24</b>	6.2340	3.1834	3.0506
<b>25-29</b>	6.4855	3.3001	3.1854
<b>30-34</b>	6.3095	3.2027	3.1068
<b>35-39</b>	6.5029	3.3079	3.1950
<b>40-44</b>	6.7878	3.4490	3.3388
<b>45-49</b>	6.5345	3.3372	3.1973
<b>50-54</b>	6.2643	3.1756	3.0887
<b>55-59</b>	5.6669	2.8383	2.8286
<b>60-64</b>	5.0775	2.5125	2.5650
<b>65-69</b>	5.1755	2.5427	2.6328
<b>70-74</b>	4.9547	2.3790	2.5757
<b>75-79</b>	4.6224	2.1609	2.4615
<b>80-84</b>	3.6561	1.6360	2.0202
<b>85+</b>	3.6671	1.5192	2.1479

**Components of Change**

	Total	Male	Female
<b>Births</b>	96,156	49,231	46,925
<b>Deaths</b>	82,449	42,672	39,777
<b>Natural Increase</b>	13,707	6,559	7,148
<b>Net Migration</b>	48,700	24,576	24,124
<b>Total Change</b>	62,407	31,135	31,272

**Components as % of Previous Year's Total Population**

	Total	Male	Female
<b>Births</b>	1.1141	0.5704	0.5437
<b>Deaths</b>	0.9553	0.4944	0.4609
<b>Natural Increase</b>	0.1588	0.0760	0.0828
<b>Net Migration</b>	0.5643	0.2847	0.2795
<b>Total Change</b>	0.7231	0.3607	0.3623

**Age Detail**

Age	Total	Male	Female	Age	Total	Male	Female	Age	Total	Male	Female
<b>0-24</b>	2,459,781	1,257,806	1,201,975	<b>12</b>	95,246	48,734	46,512	<b>60-65</b>	537,513	265,926	271,587
<b>0</b>	95,700	48,976	46,724	<b>13</b>	95,213	48,717	46,496	<b>60</b>	89,406	44,449	44,957
<b>1</b>	95,095	48,652	46,443	<b>14</b>	95,026	48,619	46,407	<b>61</b>	90,612	45,077	45,535
<b>2</b>	95,211	48,706	46,505	<b>15</b>	94,515	48,354	46,161	<b>62</b>	85,153	42,094	43,059
<b>3</b>	95,331	48,768	46,563	<b>16</b>	94,367	48,276	46,091	<b>63</b>	86,258	42,373	43,885
<b>4</b>	95,392	48,797	46,595	<b>17</b>	95,942	49,068	46,874	<b>64</b>	89,971	44,423	45,548
<b>5</b>	95,415	48,807	46,608	<b>18</b>	99,528	50,896	48,632	<b>65</b>	96,113	47,510	48,603
<b>6</b>	95,399	48,799	46,600	<b>19</b>	104,317	53,350	50,967				
<b>7</b>	95,350	48,771	46,579	<b>20</b>	106,824	54,638	52,186				
<b>8</b>	95,280	48,734	46,546	<b>21</b>	107,675	55,044	52,631				
<b>9</b>	95,218	48,700	46,518	<b>22</b>	107,759	55,034	52,725				
<b>10</b>	95,212	48,695	46,517	<b>23</b>	109,419	55,826	53,593				
<b>11</b>	95,086	48,646	46,440	<b>24</b>	110,261	56,199	54,062				

**Median Age**

Total	Male	Female
41.8	41.0	42.7

**Notes:**

- 1) Unrounded data should not be considered accurate to the last digit.
- 2) Age detail data are provided to develop a variety of age groupings. Single year age values should not be considered reliable.
- 3) Totals may not add due to rounding.



**Population by Age and Sex  
Population Forecast for April 1, 2037  
State of Washington**

**5-Year Age Groups**

Age	Total	Male	Female
<b>Total</b>	8,755,079	4,362,784	4,392,295
<b>0-4</b>	481,088	246,133	234,955
<b>5-9</b>	480,767	245,915	234,852
<b>10-14</b>	478,926	245,022	233,904
<b>15-19</b>	482,702	246,892	235,810
<b>20-24</b>	542,462	277,015	265,447
<b>25-29</b>	566,114	287,827	278,287
<b>30-34</b>	559,226	284,155	275,071
<b>35-39</b>	562,555	286,192	276,363
<b>40-44</b>	584,532	296,659	287,873
<b>45-49</b>	581,088	296,433	284,655
<b>50-54</b>	545,526	277,049	268,477
<b>55-59</b>	507,131	254,374	252,757
<b>60-64</b>	441,633	218,496	223,137
<b>65-69</b>	453,982	223,260	230,722
<b>70-74</b>	422,232	202,986	219,246
<b>75-79</b>	403,188	188,822	214,366
<b>80-84</b>	325,687	146,132	179,555
<b>85+</b>	336,240	139,422	196,818

**Percentage of Total Population**

Age	Total	Male	Female
<b>Total</b>	100.0000	49.8315	50.1685
<b>0-4</b>	5.4950	2.8113	2.6836
<b>5-9</b>	5.4913	2.8088	2.6825
<b>10-14</b>	5.4703	2.7986	2.6716
<b>15-19</b>	5.5134	2.8200	2.6934
<b>20-24</b>	6.1960	3.1640	3.0319
<b>25-29</b>	6.4661	3.2875	3.1786
<b>30-34</b>	6.3874	3.2456	3.1418
<b>35-39</b>	6.4255	3.2689	3.1566
<b>40-44</b>	6.6765	3.3884	3.2881
<b>45-49</b>	6.6372	3.3858	3.2513
<b>50-54</b>	6.2310	3.1644	3.0665
<b>55-59</b>	5.7924	2.9054	2.8870
<b>60-64</b>	5.0443	2.4956	2.5487
<b>65-69</b>	5.1854	2.5501	2.6353
<b>70-74</b>	4.8227	2.3185	2.5042
<b>75-79</b>	4.6052	2.1567	2.4485
<b>80-84</b>	3.7200	1.6691	2.0509
<b>85+</b>	3.8405	1.5925	2.2480

**Components of Change**

	Total	Male	Female
<b>Births</b>	97,052	49,690	47,362
<b>Deaths</b>	83,905	43,316	40,589
<b>Natural Increase</b>	13,147	6,374	6,773
<b>Net Migration</b>	48,700	24,578	24,122
<b>Total Change</b>	61,847	30,952	30,895

**Components as % of Previous Year's Total Population**

	Total	Male	Female
<b>Births</b>	1.1164	0.5716	0.5448
<b>Deaths</b>	0.9652	0.4983	0.4669
<b>Natural Increase</b>	0.1512	0.0733	0.0779
<b>Net Migration</b>	0.5602	0.2827	0.2775
<b>Total Change</b>	0.7114	0.3560	0.3554

**Age Detail**

Age	Total	Male	Female	Age	Total	Male	Female	Age	Total	Male	Female
<b>0-24</b>	2,465,945	1,260,977	1,204,968	<b>12</b>	95,653	48,943	46,710	<b>60-65</b>	531,153	262,605	268,548
<b>0</b>	96,596	49,435	47,161	<b>13</b>	95,782	49,008	46,774	<b>60</b>	91,595	45,524	46,071
<b>1</b>	95,956	49,093	46,863	<b>14</b>	95,742	48,987	46,755	<b>61</b>	89,098	44,218	44,880
<b>2</b>	96,061	49,143	46,918	<b>15</b>	95,540	48,880	46,660	<b>62</b>	90,270	44,822	45,448
<b>3</b>	96,194	49,208	46,986	<b>16</b>	95,063	48,631	46,432	<b>63</b>	84,803	41,838	42,965
<b>4</b>	96,281	49,254	47,027	<b>17</b>	94,940	48,553	46,387	<b>64</b>	85,867	42,094	43,773
<b>5</b>	96,259	49,239	47,020	<b>18</b>	96,616	49,406	47,210	<b>65</b>	89,520	44,109	45,411
<b>6</b>	96,215	49,216	46,999	<b>19</b>	100,543	51,422	49,121				
<b>7</b>	96,169	49,192	46,977	<b>20</b>	105,431	53,930	51,501				
<b>8</b>	96,106	49,157	46,949	<b>21</b>	108,141	55,281	52,860				
<b>9</b>	96,018	49,111	46,907	<b>22</b>	108,999	55,667	53,332				
<b>10</b>	95,944	49,070	46,874	<b>23</b>	109,094	55,660	53,434				
<b>11</b>	95,805	49,014	46,791	<b>24</b>	110,797	56,477	54,320				

**Median Age**

Total	Male	Female
42.0	41.1	42.8

**Notes:**

- 1) Unrounded data should not be considered accurate to the last digit.
- 2) Age detail data are provided to develop a variety of age groupings. Single year age values should not be considered reliable.
- 3) Totals may not add due to rounding.

**Population by Age and Sex  
Population Forecast for April 1, 2038  
State of Washington**

**5-Year Age Groups**

Age	Total	Male	Female
<b>Total</b>	8,816,385	4,393,561	4,422,824
<b>0-4</b>	485,431	248,357	237,074
<b>5-9</b>	484,977	248,074	236,903
<b>10-14</b>	482,159	246,680	235,479
<b>15-19</b>	481,190	246,119	235,071
<b>20-24</b>	538,612	275,051	263,561
<b>25-29</b>	567,210	288,214	278,996
<b>30-34</b>	571,159	290,866	280,293
<b>35-39</b>	560,306	284,531	275,775
<b>40-44</b>	578,681	293,191	285,490
<b>45-49</b>	592,908	302,572	290,336
<b>50-54</b>	547,011	278,017	268,994
<b>55-59</b>	520,185	261,611	258,574
<b>60-64</b>	448,510	221,978	226,532
<b>65-69</b>	452,116	222,116	230,000
<b>70-74</b>	415,041	199,981	215,060
<b>75-79</b>	403,957	189,426	214,531
<b>80-84</b>	331,473	149,222	182,251
<b>85+</b>	355,459	147,555	207,904

**Percentage of Total Population**

Age	Total	Male	Female
<b>Total</b>	100.0000	49.8340	50.1660
<b>0-4</b>	5.5060	2.8170	2.6890
<b>5-9</b>	5.5009	2.8138	2.6871
<b>10-14</b>	5.4689	2.7980	2.6709
<b>15-19</b>	5.4579	2.7916	2.6663
<b>20-24</b>	6.1092	3.1198	2.9894
<b>25-29</b>	6.4336	3.2691	3.1645
<b>30-34</b>	6.4784	3.2992	3.1792
<b>35-39</b>	6.3553	3.2273	3.1280
<b>40-44</b>	6.5637	3.3255	3.2382
<b>45-49</b>	6.7251	3.4319	3.2931
<b>50-54</b>	6.2045	3.1534	3.0511
<b>55-59</b>	5.9002	2.9673	2.9329
<b>60-64</b>	5.0872	2.5178	2.5694
<b>65-69</b>	5.1281	2.5194	2.6088
<b>70-74</b>	4.7076	2.2683	2.4393
<b>75-79</b>	4.5819	2.1486	2.4333
<b>80-84</b>	3.7597	1.6926	2.0672
<b>85+</b>	4.0318	1.6736	2.3582

**Components of Change**

	Total	Male	Female
<b>Births</b>	97,905	50,127	47,778
<b>Deaths</b>	85,299	43,931	41,368
<b>Natural Increase</b>	12,606	6,196	6,410
<b>Net Migration</b>	48,700	24,581	24,119
<b>Total Change</b>	61,306	30,777	30,529

**Components as % of Previous Year's Total Population**

	Total	Male	Female
<b>Births</b>	1.1183	0.5725	0.5457
<b>Deaths</b>	0.9743	0.5018	0.4725
<b>Natural Increase</b>	0.1440	0.0708	0.0732
<b>Net Migration</b>	0.5562	0.2808	0.2755
<b>Total Change</b>	0.7002	0.3515	0.3487

**Age Detail**

Age	Total	Male	Female	Age	Total	Male	Female	Age	Total	Male	Female
<b>0-24</b>	2,472,369	1,264,281	1,208,088	<b>12</b>	96,373	49,312	47,061	<b>60-65</b>	533,954	263,779	270,175
<b>0</b>	97,451	49,873	47,578	<b>13</b>	96,189	49,217	46,972	<b>60</b>	94,127	46,594	47,533
<b>1</b>	96,857	49,555	47,302	<b>14</b>	96,311	49,278	47,033	<b>61</b>	91,286	45,292	45,994
<b>2</b>	96,926	49,586	47,340	<b>15</b>	96,258	49,249	47,009	<b>62</b>	88,768	43,972	44,796
<b>3</b>	97,048	49,647	47,401	<b>16</b>	96,092	49,159	46,933	<b>63</b>	89,904	44,553	45,351
<b>4</b>	97,149	49,696	47,453	<b>17</b>	95,637	48,909	46,728	<b>64</b>	84,425	41,567	42,858
<b>5</b>	97,153	49,699	47,454	<b>18</b>	95,606	48,887	46,719	<b>65</b>	85,444	41,801	43,643
<b>6</b>	97,062	49,650	47,412	<b>19</b>	97,597	49,915	47,682				
<b>7</b>	96,987	49,610	47,377	<b>20</b>	101,613	51,979	49,634				
<b>8</b>	96,928	49,579	47,349	<b>21</b>	106,726	54,562	52,164				
<b>9</b>	96,847	49,536	47,311	<b>22</b>	109,465	55,904	53,561				
<b>10</b>	96,747	49,483	47,264	<b>23</b>	110,344	56,298	54,046				
<b>11</b>	96,539	49,390	47,149	<b>24</b>	110,464	56,308	54,156				

**Median Age**

Total	Male	Female
42.1	41.2	43.0

**Notes:**

- 1) Unrounded data should not be considered accurate to the last digit.
- 2) Age detail data are provided to develop a variety of age groupings. Single year age values should not be considered reliable.
- 3) Totals may not add due to rounding.

**Population by Age and Sex  
Population Forecast for April 1, 2039  
State of Washington**

**5-Year Age Groups**

Age	Total	Male	Female
<b>Total</b>	8,877,046	4,424,110	4,452,936
<b>0-4</b>	489,677	250,534	239,143
<b>5-9</b>	489,244	250,259	238,985
<b>10-14</b>	485,663	248,478	237,185
<b>15-19</b>	483,188	247,140	236,048
<b>20-24</b>	532,051	271,702	260,349
<b>25-29</b>	568,962	289,395	279,567
<b>30-34</b>	579,868	295,051	284,817
<b>35-39</b>	560,319	284,173	276,146
<b>40-44</b>	575,603	292,090	283,513
<b>45-49</b>	598,809	304,735	294,074
<b>50-54</b>	552,702	281,225	271,477
<b>55-59</b>	531,081	267,470	263,611
<b>60-64</b>	457,941	227,008	230,933
<b>65-69</b>	445,751	218,725	227,026
<b>70-74</b>	412,686	199,560	213,126
<b>75-79</b>	404,183	189,771	214,412
<b>80-84</b>	335,328	151,618	183,710
<b>85+</b>	373,990	155,176	218,814

**Percentage of Total Population**

Age	Total	Male	Female
<b>Total</b>	100.0000	49.8376	50.1624
<b>0-4</b>	5.5162	2.8223	2.6939
<b>5-9</b>	5.5113	2.8192	2.6922
<b>10-14</b>	5.4710	2.7991	2.6719
<b>15-19</b>	5.4431	2.7840	2.6591
<b>20-24</b>	5.9936	3.0607	2.9328
<b>25-29</b>	6.4094	3.2600	3.1493
<b>30-34</b>	6.5322	3.3238	3.2085
<b>35-39</b>	6.3120	3.2012	3.1108
<b>40-44</b>	6.4842	3.2904	3.1938
<b>45-49</b>	6.7456	3.4328	3.3127
<b>50-54</b>	6.2262	3.1680	3.0582
<b>55-59</b>	5.9826	3.0131	2.9696
<b>60-64</b>	5.1587	2.5572	2.6015
<b>65-69</b>	5.0214	2.4639	2.5574
<b>70-74</b>	4.6489	2.2480	2.4009
<b>75-79</b>	4.5531	2.1378	2.4154
<b>80-84</b>	3.7775	1.7080	2.0695
<b>85+</b>	4.2130	1.7481	2.4649

**Components of Change**

	Total	Male	Female
<b>Births</b>	98,657	50,512	48,145
<b>Deaths</b>	86,696	44,547	42,149
<b>Natural Increase</b>	11,961	5,965	5,996
<b>Net Migration</b>	48,700	24,584	24,116
<b>Total Change</b>	60,661	30,549	30,112

**Components as % of Previous Year's Total Population**

	Total	Male	Female
<b>Births</b>	1.1190	0.5729	0.5461
<b>Deaths</b>	0.9834	0.5053	0.4781
<b>Natural Increase</b>	0.1357	0.0677	0.0680
<b>Net Migration</b>	0.5524	0.2788	0.2735
<b>Total Change</b>	0.6880	0.3465	0.3415

**Age Detail**

Age	Total	Male	Female	Age	Total	Male	Female	Age	Total	Male	Female
<b>0-24</b>	2,479,823	1,268,113	1,211,710	<b>12</b>	97,109	49,689	47,420	<b>60-65</b>	541,957	268,291	273,666
<b>0</b>	98,204	50,259	47,945	<b>13</b>	96,911	49,587	47,324	<b>60</b>	95,251	47,624	47,627
<b>1</b>	97,715	49,994	47,721	<b>14</b>	96,718	49,487	47,231	<b>61</b>	93,815	46,360	47,455
<b>2</b>	97,833	50,051	47,782	<b>15</b>	96,829	49,540	47,289	<b>62</b>	90,953	45,044	45,909
<b>3</b>	97,918	50,093	47,825	<b>16</b>	96,812	49,529	47,283	<b>63</b>	88,414	43,712	44,702
<b>4</b>	98,007	50,137	47,870	<b>17</b>	96,670	49,439	47,231	<b>64</b>	89,508	44,268	45,240
<b>5</b>	98,025	50,143	47,882	<b>18</b>	96,305	49,244	47,061	<b>65</b>	84,016	41,283	42,733
<b>6</b>	97,960	50,112	47,848	<b>19</b>	96,572	49,388	47,184				
<b>7</b>	97,838	50,046	47,792	<b>20</b>	98,632	50,454	48,178				
<b>8</b>	97,749	49,999	47,750	<b>21</b>	102,856	52,586	50,270				
<b>9</b>	97,672	49,959	47,713	<b>22</b>	108,029	55,176	52,853				
<b>10</b>	97,580	49,910	47,670	<b>23</b>	110,810	56,535	54,275				
<b>11</b>	97,345	49,805	47,540	<b>24</b>	111,724	56,951	54,773				

**Median Age**

Total	Male	Female
42.2	41.3	43.1

**Notes:**

- 1) Unrounded data should not be considered accurate to the last digit.
- 2) Age detail data are provided to develop a variety of age groupings. Single year age values should not be considered reliable.
- 3) Totals may not add due to rounding.

**Population by Age and Sex  
Population Forecast for April 1, 2040  
State of Washington**

**5-Year Age Groups**

Age	Total	Male	Female
<b>Total</b>	8,937,114	4,454,457	4,482,657
<b>0-4</b>	493,765	252,630	241,135
<b>5-9</b>	493,566	252,473	241,093
<b>10-14</b>	489,596	250,495	239,101
<b>15-19</b>	486,632	248,904	237,728
<b>20-24</b>	523,074	267,119	255,955
<b>25-29</b>	571,957	290,985	280,972
<b>30-34</b>	586,671	298,297	288,374
<b>35-39</b>	561,718	284,861	276,857
<b>40-44</b>	574,747	291,933	282,814
<b>45-49</b>	598,581	303,636	294,945
<b>50-54</b>	559,985	285,599	274,386
<b>55-59</b>	536,191	270,003	266,188
<b>60-64</b>	470,992	233,974	237,018
<b>65-69</b>	438,212	214,909	223,303
<b>70-74</b>	417,771	202,620	215,151
<b>75-79</b>	400,871	188,538	212,333
<b>80-84</b>	339,428	154,113	185,315
<b>85+</b>	393,357	163,368	229,989

**Percentage of Total Population**

Age	Total	Male	Female
<b>Total</b>	100.0000	49.8422	50.1578
<b>0-4</b>	5.5249	2.8268	2.6981
<b>5-9</b>	5.5227	2.8250	2.6977
<b>10-14</b>	5.4782	2.8029	2.6754
<b>15-19</b>	5.4451	2.7851	2.6600
<b>20-24</b>	5.8528	2.9889	2.8640
<b>25-29</b>	6.3998	3.2559	3.1439
<b>30-34</b>	6.5644	3.3377	3.2267
<b>35-39</b>	6.2852	3.1874	3.0978
<b>40-44</b>	6.4310	3.2665	3.1645
<b>45-49</b>	6.6977	3.3975	3.3002
<b>50-54</b>	6.2658	3.1957	3.0702
<b>55-59</b>	5.9996	3.0211	2.9785
<b>60-64</b>	5.2701	2.6180	2.6521
<b>65-69</b>	4.9033	2.4047	2.4986
<b>70-74</b>	4.6746	2.2672	2.4074
<b>75-79</b>	4.4855	2.1096	2.3759
<b>80-84</b>	3.7980	1.7244	2.0735
<b>85+</b>	4.4014	1.8280	2.5734

**Components of Change**

	Total	Male	Female
<b>Births</b>	99,335	50,859	48,476
<b>Deaths</b>	87,967	45,095	42,872
<b>Natural Increase</b>	11,368	5,764	5,604
<b>Net Migration</b>	48,700	24,583	24,117
<b>Total Change</b>	60,068	30,347	29,721

**Components as % of Previous Year's Total Population**

	Total	Male	Female
<b>Births</b>	1.1190	0.5729	0.5461
<b>Deaths</b>	0.9909	0.5080	0.4830
<b>Natural Increase</b>	0.1281	0.0649	0.0631
<b>Net Migration</b>	0.5486	0.2769	0.2717
<b>Total Change</b>	0.6767	0.3419	0.3348

**Age Detail**

Age	Total	Male	Female	Age	Total	Male	Female	Age	Total	Male	Female
<b>0-24</b>	2,486,633	1,271,621	1,215,012	<b>12</b>	97,918	50,105	47,813	<b>60-65</b>	560,072	277,943	282,129
<b>0</b>	98,884	50,607	48,277	<b>13</b>	97,649	49,965	47,684	<b>60</b>	103,945	52,257	51,688
<b>1</b>	98,472	50,383	48,089	<b>14</b>	97,442	49,858	47,584	<b>61</b>	94,939	47,388	47,551
<b>2</b>	98,696	50,493	48,203	<b>15</b>	97,236	49,749	47,487	<b>62</b>	93,479	46,110	47,369
<b>3</b>	98,831	50,561	48,270	<b>16</b>	97,384	49,821	47,563	<b>63</b>	90,597	44,782	45,815
<b>4</b>	98,882	50,586	48,296	<b>17</b>	97,393	49,810	47,583	<b>64</b>	88,032	43,437	44,595
<b>5</b>	98,887	50,586	48,301	<b>18</b>	97,344	49,777	47,567	<b>65</b>	89,080	43,969	45,111
<b>6</b>	98,838	50,559	48,279	<b>19</b>	97,275	49,747	47,528				
<b>7</b>	98,740	50,510	48,230	<b>20</b>	97,592	49,920	47,672				
<b>8</b>	98,604	50,437	48,167	<b>21</b>	99,834	51,041	48,793				
<b>9</b>	98,497	50,381	48,116	<b>22</b>	104,107	53,175	50,932				
<b>10</b>	98,407	50,334	48,073	<b>23</b>	109,351	55,796	53,555				
<b>11</b>	98,180	50,233	47,947	<b>24</b>	112,190	57,187	55,003				

**Median Age**

Total	Male	Female
42.3	41.4	43.2

**Notes:**

- 1) Unrounded data should not be considered accurate to the last digit.
- 2) Age detail data are provided to develop a variety of age groupings. Single year age values should not be considered reliable.
- 3) Totals may not add due to rounding.



Office of Financial Management  
PO Box 43113 • Olympia, WA 98504-3113  
360-902-0555 • Fax 360-664-2832