

# OFM Forecasting and Research

*Strategic Initiatives*

*Closeout 2022 – 2Q2023*

# Table of Contents

|   |                   |
|---|-------------------|
| <a href="#">About OFM's Forecasting and Research division</a> | <a href="#">4</a> |
|---|-------------------|

## Five goal areas: vision and examples

|  |                    |
|--|--------------------|
| <a href="#">Open Data</a>  | <a href="#">6</a>  |
| <a href="#">Support thriving research communities</a>                  | <a href="#">7</a>  |
| <a href="#">Promote research into and utilization of equity lenses</a> | <a href="#">8</a>  |
| <a href="#">Continuous improvement</a>                                 | <a href="#">9</a>  |
| <a href="#">Improve our public face and web presence</a>               | <a href="#">10</a> |

## Strategic initiatives by goal area

|  |                    |
|--|--------------------|
| <a href="#">Open Data</a>  | <a href="#">12</a> |
| <a href="#">Support thriving research communities</a>                  | <a href="#">13</a> |
| <a href="#">Promote research into and utilization of equity lenses</a> | <a href="#">14</a> |
| <a href="#">Continuous improvement</a>                                 | <a href="#">15</a> |
| <a href="#">Improve our public face and web presence</a>               | <a href="#">16</a> |

## Strategic initiative descriptions by section

|  |                    |
|--|--------------------|
| <a href="#">Public Safety Policy and Research Center</a> | <a href="#">18</a> |
| <a href="#">Population Unit</a>                          | <a href="#">19</a> |
| <a href="#">Forecasting and Research Systems</a>         | <a href="#">20</a> |
| <a href="#">Economists Group</a>                         | <a href="#">21</a> |
| <a href="#">Health Care Research Center</a>              | <a href="#">22</a> |
| <a href="#">Education Research and Data Center</a>       | <a href="#">23</a> |
| <a href="#">Looking ahead</a>                            | <a href="#">24</a> |

# About us

OFM Forecasting and Research is uniquely positioned as a source for data, research, and statistical analyses to inform decisions by the Governor, the legislature, other state agencies, research communities, and the public.



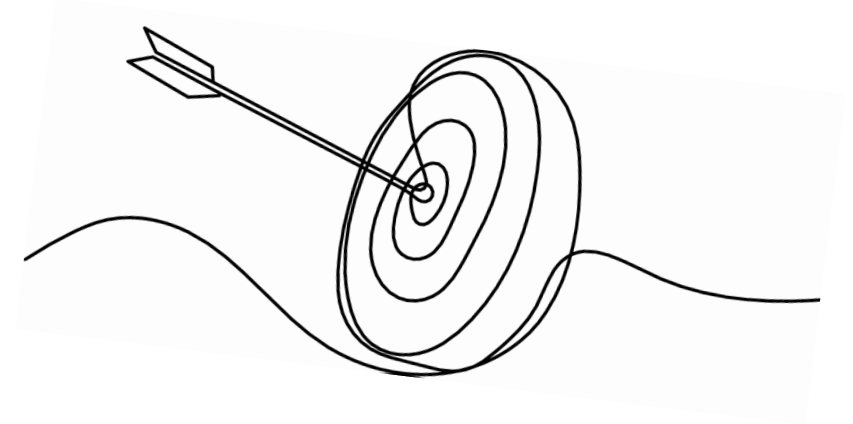
We are home to in-house analytical research and databases ranging from health care, education, demographic characteristics, criminal justice, traffic safety, and economic trends. As data custodians, we value privacy, security, and access.

We are committed to promoting diverse and inclusive research communities, reliable data sources, rigorous program evaluations, and accessible information.

# Five strategic goal areas

*Click the links below to read goal area vision and intervention examples.*

1. [Open Data](#)
2. [Support thriving research communities](#)
3. [Promote research into and utilization of equity lenses](#)
4. [Continuous improvement](#)
5. [Improve our public face and web presence](#)

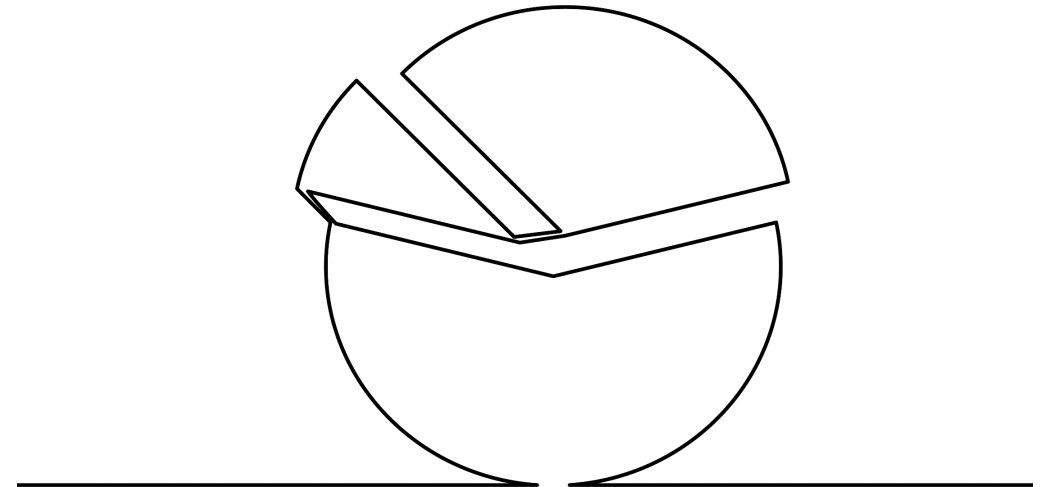


# Open data

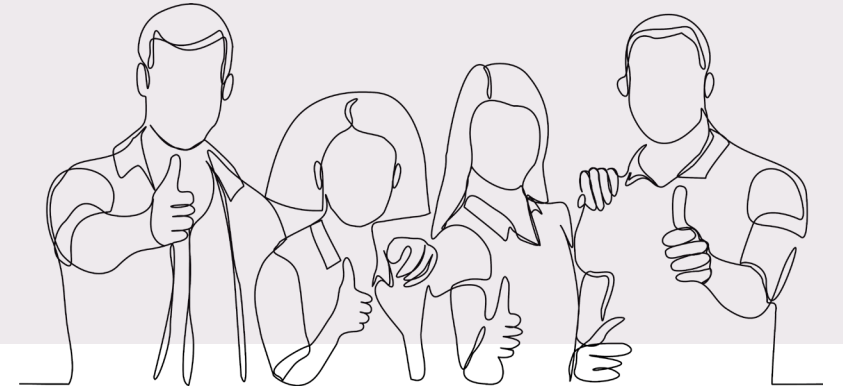
Be a premier source for relevant, trustworthy, secure data.

## Examples:

1. Add key variables to our data
2. Be a voice for data access and data use including program evaluation
3. Facilitate best practices around data sharing and access



# Support thriving research communities



Play a leadership role in fostering and serving diverse research communities.

## Examples:

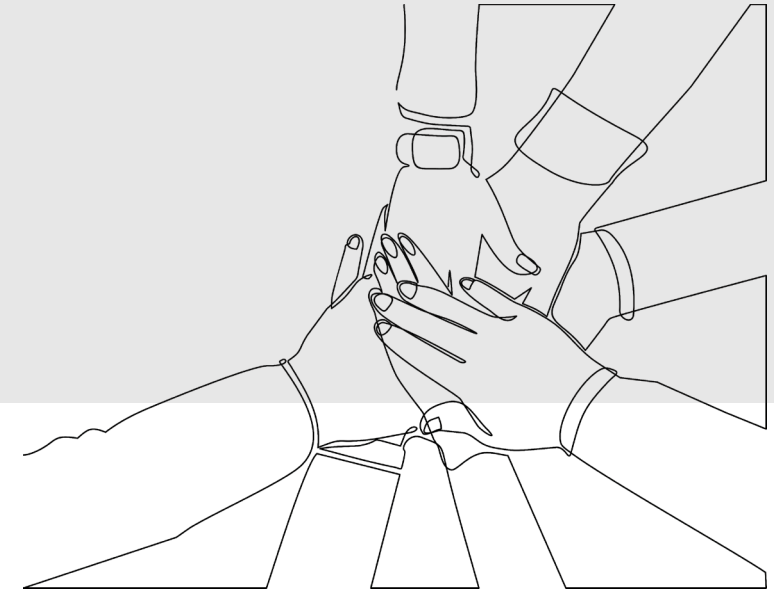
1. Expand our data analysis capacity to take advantage of our expanding data capacity
2. Diligent stakeholder work around customer needs
3. Create data linkages that support rigorous research and evaluation
4. Tools and documentation to make data more accessible to diverse research efforts

# Promote research into and utilization of equity lenses

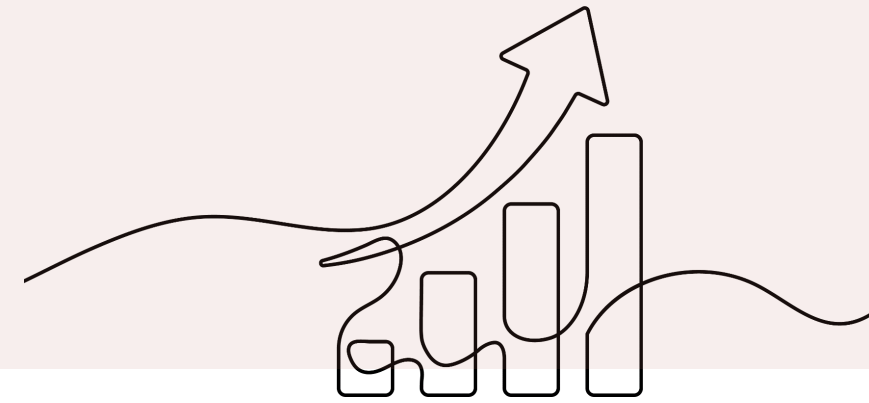
Integrate diversity, equity, and inclusion into our research agendas and data supply efforts.

## Examples:

1. Add missing data to allow more extensive equity research
2. Add qualitative research methods to our toolkits
3. Promote intersectionality in research products
4. Pro-Equity Anti-Racism (PEAR) and other activities to engage diverse stakeholders
5. Look for opportunities to include financial data in our research; capitalize on our OFM role



# Continuous improvement



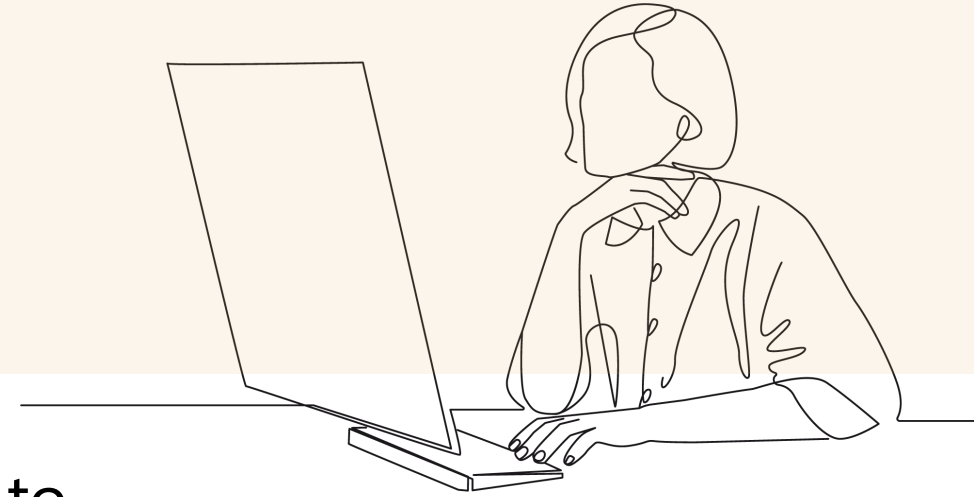
Embrace continuous improvement principles and practices to provide more efficient and effective programs.

## Examples:

1. Medicaid forecast process documentation and chartering
2. Education data warehouse evolution
3. Data sharing streamlining
4. Web and other distribution improvements for data products(also [see improve our public face and web presence](#))
5. Documentation to facilitate shared use of methods and code, including versioning
6. Software tools rationalization and training



# Improve our public face and web presence



Provide the most user friendly, relevant resources to the widest audience through constantly updated Web visuals and materials.


## **Examples:**

1. Reframe our web presence
2. “Branding” initiatives and entities within Forecasting and Research (ERDC, HCRC, SAC, etc)
3. Allow users to explore their own questions
4. Increase utilization of our resources

# Strategic initiatives by goal areas

1. [Open Data](#)
2. [Support thriving research communities](#)
3. [Promote research into and utilization of equity lenses](#)
4. [Continuous improvement](#)
5. [Improve our public face and web presence](#)


# Open Data

**ALL** 


Identify and Advocate to fill data gaps (quarterly update)

**HCRC** 


Strategic Health Planning Office data needs (23Q1-2)

**POPULATION UNIT** 

Small Area Estimate Updates 2022Q4

**POPULATION UNIT** 




Quarterly Boundary Change (BAS) Updates




**ERDC** 

ERDC Data Governance Manual

**ERDC/FRS**  

ERDC data management documentation

-  HEALTH CARE RESEARCH CENTER (HCRC)
-  PUBLIC SAFETY POLICY AND RESEARCH CENTER (PSPRC)
-  EDUCATION RESEARCH AND DATA CENTER (ERDC)

-  POPULATION UNIT
-  ECONOMISTS GROUP
-  FORECASTING AND RESEARCH SYSTEMS (FRS)

 ALL

# Supporting Diverse Research Communities

ERDC, TRIP/PSPRC, HCRC



Outreach on critical questions and research agenda

PSRC



Sex Offender Policy Board/Sentencing Guidelines Commission research and outreach

PSRC



University collaboration around public safety and criminal justice research (Q4 ongoing)

PSRC



Other State Advisory Group (SAG) examples for public safety and criminal justice

ALL



Explore qualitative research options

ALL



Intersectionality and use of detailed race and ethnicity data: encourage data usage, pursue additional data

ALL



Research that happens across F&R Sections (To Be Determined)

- HEALTH CARE RESEARCH CENTER (HCRC)
- PUBLIC SAFETY POLICY AND RESEARCH CENTER (PSPRC)
- EDUCATION RESEARCH AND DATA CENTER (ERDC)

- POPULATION UNIT
- ECONOMISTS GROUP
- FORECASTING AND RESEARCH SYSTEMS (FRS)

- ALL

# Equity Research

## HCRC

Strategic Health Planning Office (SHPO) 22Q4 research



## ERDC

ERDC use of equity road map that encompasses data collection to report dissemination / data use (ongoing)



## ECONOMISTS GROUP

Weekly and Monthly Economic Updates



## ERDC

ERDC 2019 SLDS grant focus is equity



## PSPRC

PSPRC research plan for TRIP and CJRSC (Washington's SAC)



## ALL

Future/Parking Lot: Explore creation of an "Equity Variable Inventory" to document variables available in F&R databases and frequently used public sources.



## PSPRC

State Justice Statistics Grants SJS23 (frame and implement)



## POP

Migration research



## ERDC




ERDC critical questions and research agenda (23Q1-2)






## POP

Non-binary gender research



-  HEALTH CARE RESEARCH CENTER (HCRC)
-  PUBLIC SAFETY POLICY AND RESEARCH CENTER (PSPRC)
- 

-  POPULATION UNIT
-  ECONOMISTS GROUP
-  FORECASTING AND RESEARCH SYSTEMS (FRS)

-  ALL

# Continuous Improvement

## ERDC, PSPRC

Research Guidebooks: ERDC Research Handbook, Criminal Justice Manual of Operations and Research Agenda



## ERDC, FRS

P20W Data System Study contract



## ALL

Division-Wide Peer Review strategy (encourage & train for it)



## POPULATION UNIT

UW Bayesian methods exploration (POP)23Q1-2



## ERDC/FRS

FRS Data Management Program (data retention, standard queries)



## HCRC

Medicaid Forecast QA



## POPULATION UNIT

Census Improvement (Ongoing to 2030)



## ERDC, FRS

Quarterly reporting on metrics around data sharing performance



## ERDC, FRS

Standardize SQL scripts and create a code repository



## ECONOMIST GROUP

Update of Input Output model documentation



## ALL

Research Roundtables (placeholder for staff collaboration, possible quarterly topical mtg)



- HEALTH CARE RESEARCH CENTER (HCRC)
- PUBLIC SAFETY POLICY AND RESEARCH CENTER (PSPRC)
- EDUCATION RESEARCH AND DATA CENTER (ERDC)

- POPULATION UNIT
- ECONOMISTS GROUP
- FORECASTING AND RESEARCH SYSTEMS (FRS)

- ALL

# Web/Public Presence

## HCRC

Health Care Research Center (Q4)



## ERDC

ERDC webpage revision



## POPULATION UNIT

Population Unit Website improvements (1-2Q23)



## PSPRC




SAC and Humans web modifications — Q4 rebranding






## ALL

Advanced Analytics: Power BI dashboards building DoH models



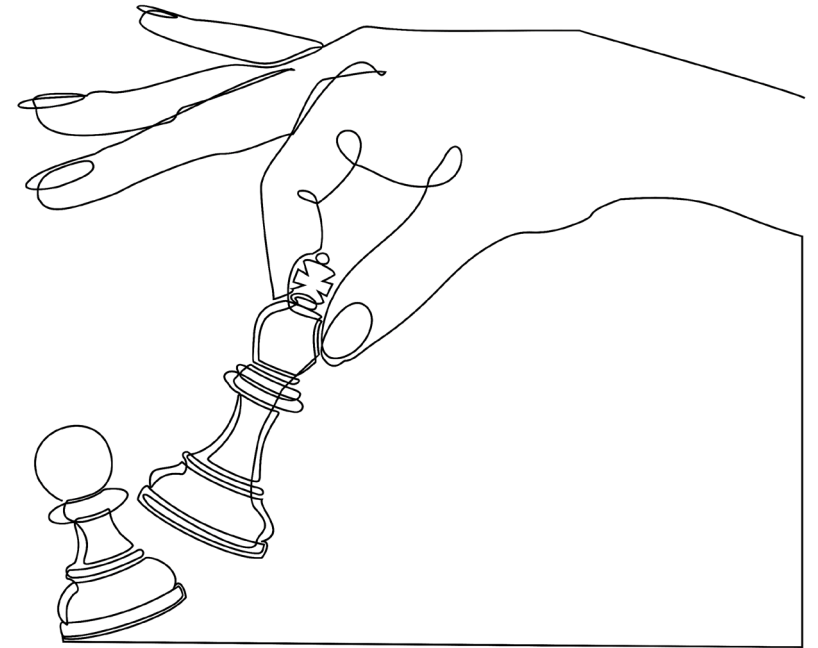
-  HEALTH CARE RESEARCH CENTER (HCRC)
-  PUBLIC SAFETY POLICY AND RESEARCH CENTER (PSPRC)
- 

-  POPULATION UNIT
-  ECONOMISTS GROUP
-  FORECASTING AND RESEARCH SYSTEMS (FRS)

-  ALL

# Section strategic initiative overviews

1. [Public Safety Policy and Research Center \(PSPRC\)](#)
2. [Population Unit](#)
3. [Forecasting and Research Systems](#)
4. [Economists](#)
5. [Health Care Research Center](#)
6. [Education Research and Data Center](#)





# Public Safety Policy and Research Center (PSPRC)

- SAC Rebranding: Work to rebrand the SAC to revamp and refresh as the clearinghouse for crime and justice statistic – this will include updating the external facing website, update public-facing data, templates and look of website.
- Manual of Operations for Criminal Justice and Public Safety team: The MOO will provide guidance to staff on core procedures, processes, and plans, and set quality standards, defines responsibilities (who, what, when, and where).
- Research collaborations with external parties: TRIP and SAC will engage with research universities, state agencies, and out-of-state agencies to collaborate and expand on research and outreach for critical questions.
- SJS 2021, 2022, and 2023: endeavor to expand on (1) research with an equity lens, (2) research utilizing open data sources to promote transparency in data
- Enhance TRIP repository and CJ Datawarehouse: endeavor to update readiness documentation, manuals, and work surrounding these data systems
- The Public Safety Policy and Research Center’s Three-Year Research Plan: CY2023-CY2025: Describes the three-year plan for research and program evaluation to outline proposed projects.

Contact: Vasiliki Georgoulas-Sherry, Ph.D., Director  
[Vasiliki.Georgoulas-Sherry@ofm.wa.gov](mailto:Vasiliki.Georgoulas-Sherry@ofm.wa.gov)

# Population Unit

- SAEP Updates: Develop estimates for tribal census tracts and tribal block groups, add 2020 PUMA estimates and 2020 Urban/Rural area estimates.
- Census BAS updates: Post the quarterly Census BAS filing data information in GIS format.
- Migration research: The population unit will explore and evaluate methods of forecasting population by educational attainment.
- Non-binary gender research: The population unit will research potential sources of non-binary gender population data and evaluate if there is sufficient information to estimate Washington's non-binary gender population.
- Bayesian methods collaboration: Work with UW experts to explore and understand Bayesian population projection models developed by UW CSDE staff.
- Census Improvement: Use our resources to influence and improve the 2030 census through thoughtful feedback in workgroups (FSCPE, SDC), federal register notices, meetings, and research.
- Website improvements: Modernize the Pop Unit webpages with strategic user-friendly visualizations, and summary information.

**Contact: Mike Mohrman, State Demographer**

[Mike.Mohrman@ofm.wa.gov](mailto:Mike.Mohrman@ofm.wa.gov)

# Forecasting and Research Systems

- Perform annual application support enhancement activities for Population, Higher Ed, and ERDC lines of business
- Complete the P20w Data Systems Study looking at technology and processes around data movement, linking, profiling, architecture and generate a roadmap for the future
- Perform data loading and identity matching activities in support of ERDC, TRIP, and PSPRC
- Update public data visualizations and dashboards using education and workforce data
- Maintain, Update and expand the Data Management Program beyond ERDC and include retention and deletion functions.
- Create and review quarterly metrics around request intake, processing, and fulfillment
- Ensure database and application servers supporting Forecasting and Research are available to Forecasting staff.

Contact: Tim Norris, Manager  
[Tim.Norris@ofm.wa.gov](mailto:Tim.Norris@ofm.wa.gov)

# Economists Group

- Input-Output Model updates and improvements in documentation and user protocols.
- Median Household Income Annual Update
- Long term employment and income forecasts supporting Growth Management Act
- Weekly and Monthly Economic Updates: these capture current events and provide opportunities to tell economic stories that inform policy decisions across OFM and the Governor's office.

Contact: Marc Baldwin, PhD  
[Marc.Baldwin@ofm.wa.gov](mailto:Marc.Baldwin@ofm.wa.gov)

# Health Care Research Center

- Formalize charter for Medicaid Forecast, update charter as needed, and continue quality assurance work throughout forecast cycle
- Create new website pages to reflect current work – Medicaid pages, dashboards with health care data from current and previous reports.
- Complete leg reports on hospital utilization, WA-APCD updates, and student health access (budget proviso) and others as assigned.
- Continue work on insurance coverage in Washington - update to Washington uninsured estimation model, adjustment of the Medicaid undercount in the ACS, understand the impact of ending the public health emergency on the uninsured population, geographic analysis of the uninsured population in Washington, health care coverage for immigrants, etc.
- Deeper dives into research topics around health and health care including skilled nursing, pharmacy, and dental as examples.
- Collaborate with other sections to update state marijuana report, and create tobacco, and alcohol reports.
- Keep proposing health care related questions and other important health topics to state-based population surveys such as Healthy Youth Survey, Behavioral Risk Factor Surveillance system, (others?)
- Explore grant and other funding options to link health care data with claims data.
- Work with stakeholders to improve current data sources and break down barriers to access to data (FREE THE DATA).
- Rebrand the Strategic Health Planning work and make the guiding principles separate from the Certificate of Need program. Work with stakeholders to develop a meaningful statewide health resources strategy focused on better collection of data around health care professionals, health care facilities, claims data, and population-based, socio-economic health care behaviors (RCW 43.370).

**Contact: Mandy Stahre, PhD, Director**

[Mandy.Stahre@ofm.wa.gov](mailto:Mandy.Stahre@ofm.wa.gov)

# Education Research and Data Center

- Work with the Data Contributors Group and the PCHEES Stakeholders to identify data elements that are missing or under-utilized in our P20W data system so that we can work towards addressing these gaps in our data system, documentation, and analytical work.
- Create, revise, or update documentation that is critical for ensuring clear data governance processes and appropriate data use, including the data governance manual, research handbook and ongoing data management documentation.
- Publish critical questions and begin collaborative work on the research agenda to support the production of timely and relevant research with an equity focus. The research agenda will allow ERDC to prioritize data and research projects and identify partners to support specific projects.
- Produce six research reports under the 2019 SLDS grant that have a focus on equity and align with ERDC critical questions. The research questions and study designs will be developed through a collaborative process to ensure the topics are relevant and the results useful.
- Rework ERDC's webpage and content to make it easier for users to search and find relevant information and create more transparency around ERDCs process and prioritization of requests for data. Additional ways of packaging data and results will be explored as part of the effort to increase access and use of ERDC's products.

**Contact: Katie Weaver-Randall, Director**

[Katie.Weaver-Randall@ofm.wa.gov](mailto:Katie.Weaver-Randall@ofm.wa.gov)

# Looking ahead

## Open Data

Build case for next generation P20W warehouse

FRS: data marts and depositories

Explore identifying and providing key numbers quickly on the Web to support customer needs

## Research Communities

Joint research projects with external partners

## Equity Research

“Falling through the Cracks” report across whole division (uninsured, felon reemployment, dropouts, etc)

Explore creation of an “Equity Variable Inventory” to document variables available in F&R databases and frequently used public sources.

Expand use and skills around GIS for equity research and open data

## Continuous Improvement

Machine Learning opportunities

Incorporating 2020 detailed age sex data into models

Better information and strategies for staff around shared technology (One Drive, Teams, etc)

## Web/Public Presence

Formal announcement of sum of the changes